

Definitions

Aggravated DWI – A driver arrested for 1) driving with a BAC of 0.16 or higher, 2) driving under the influence of alcohol or drugs and causing bodily injury to a human being as a result, or 3) driving under the influence of alcohol or drugs and refusing to submit to a BAC test at the time of arrest for DWI.

Alcohol-involved Crash – A crash for which the Uniform Crash Report indicated that 1) a DWI citation was issued, 2) alcohol was a contributing factor, or 3) a person in control of a vehicle (including a pedestrian or pedalcyclist) was suspected of being under the influence of alcohol.

Alcohol-involved Driver – A person in control of a vehicle who was cited for DWI or indicated on the Uniform Crash Report as being either suspected or determined by testing to be under the influence of alcohol. There can be multiple alcohol-involved drivers in a single alcohol-involved crash.

Crash – A reported incident on a public roadway involving one or more motor vehicles that resulted in death, personal injury, or at least \$500 in property damage. Crashes on private property (such as a parking lot) are not included.

DWI Arrest (Citation) – In this report, a DWI arrest (a.k.a. a DWI citation) is a driver arrested for either DWI or aggravated DWI. New Mexico’s legal limit for presumption of driving while intoxicated (DWI) is 0.08 for non-commercial drivers older than 21 years of age, 0.04 for commercial vehicle drivers, and 0.02 for drivers younger than 21 years of age.

DWI Conviction – A driver convicted of driving under the intoxicating influence of alcohol, narcotics, or pathogenic drugs, including aggravated DWI.

Fatal Crash – A crash in which at least one person was killed. More than one person can be killed in a single fatal crash.

Fatalities – The number of people killed in a crash. The terms “killed” and “deaths” are synonymous with “fatalities.” A fatality is crash-related if it occurs at the time of the crash or if the person(s) involved in the crash dies within 30 days.

Injury Crash – A reported crash in which at least one person was injured. Injury crashes involve at least one suspected serious injury (Class A), suspected minor injury (Class B), or possible injury (Class C). Fatal crashes are not included.

Missing Data – An indication that the applicable field on the UCR form was left blank or contained an invalid code. Starting with crashes that occurred in 2012, improvements in the identification of missing data in the NMDOT crash database led to an increase in the reported amount of missing data.

Pedalcyclist – A person riding a mechanism of transport that is powered solely by pedals (a.k.a. bicyclist).

Pedestrian – A person on foot, walking, running, jogging, hiking, sitting or lying down who is involved in a motor vehicle traffic crash.

Sources

Crash Data – New Mexico Department of Transportation, Traffic Safety Division, Traffic Records Bureau, Traffic Crash Database, as of the report date below. Crash data are compiled using NMDOT Uniform Crash Reports (UCR), submitted by law enforcement agencies in the state, for any incident on a public roadway involving one or more motor vehicles that resulted in death, injury, or at least \$500 in property damage. These reports are processed by the NMDOT Traffic Records Bureau and analyzed by the University of New Mexico, Geospatial and Population Studies, Traffic Research Unit (TRU).

DWI Citation Tracking System (CTS) – New Mexico Taxation and Revenue Department (NM TRD), Motor Vehicle Division (MVD), DWI Citation Tracking System (CTS), as of December 2017. Repeat offenders are identified by the combination of account key, arrest date, and citation number. County data are based upon the county where the arrest took place. City data are based upon the city where the offender resides.

Urban Areas – New Mexico Department of Transportation, Asset Management and Planning, 2010 U.S. Census Urbanized Area Boundaries, NMDOT-Adjusted, and U.S. Census Urban Clusters, August 21, 2013. In crashes before 2013, “urban” was defined as a town or city with a population of at least 2,500 people.

Table 1: Total Crashes and Alcohol-involved Crashes by Crash Severity in Torrance County, 2007-2016

Year	Total Crashes				Alcohol-involved Crashes			
	Fatal	Injury	Property Damage Only	Total	Fatal	Injury	Property Damage Only	Total
2007	8	69	275	352	1	7	6	14
2008	6	67	172	245	1	4	5	10
2009	9	123	205	337	3	14	4	21
2010	4	84	165	253	1	8	2	11
2011	5	86	182	273	1	5	4	10
2012	9	64	116	189	4	5	2	11
2013	10	50	125	185	5	3	5	13
2014	5	64	149	218	3	6	3	12
2015	7	91	216	314	0	4	8	12
2016	10	72	145	227	2	1	4	7

Figure 1: Alcohol-involved Fatal and Injury Crashes Compared with Non-alcohol-involved Fatal and Injury Crashes in Torrance County, 2007-2016

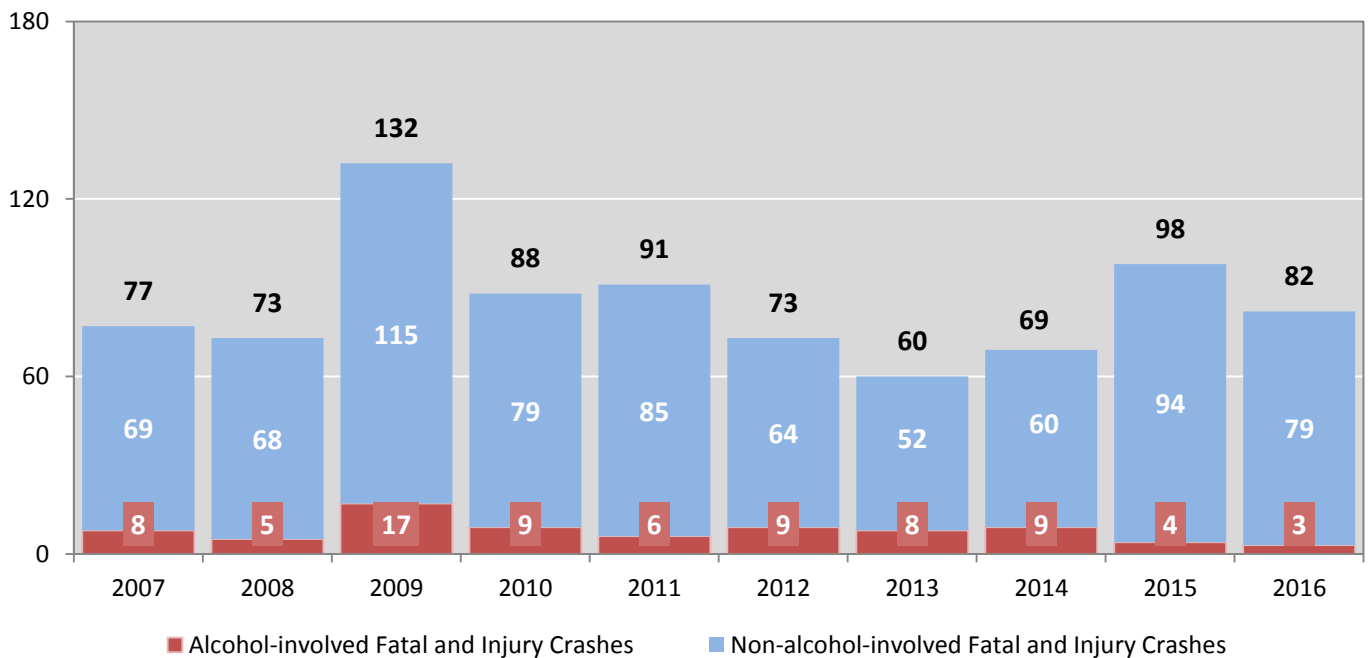


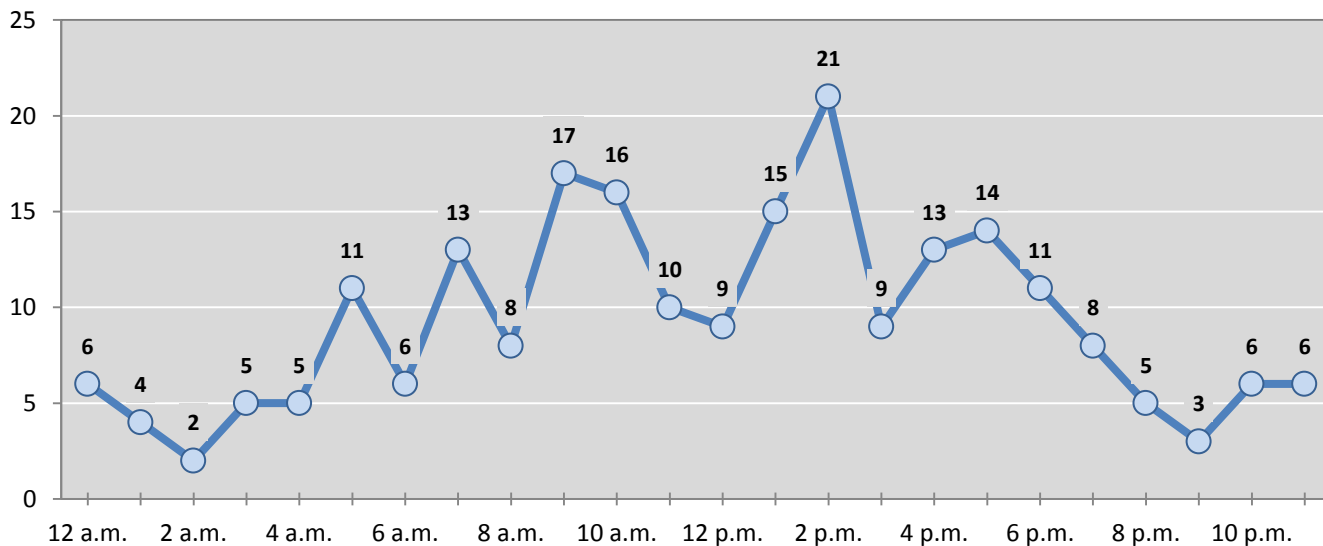
Table 2: Crashes by Month in Torrance County, 2012-2016

Month	Crashes					5-Year Average
	2012	2013	2014	2015	2016	
January	9	10	14	46	24	21
February	12	5	18	20	18	15
March	19	9	19	13	10	14
April	11	11	15	21	16	15
May	17	18	20	26	12	19
June	12	15	26	21	28	20
July	19	16	7	22	17	16
August	13	12	16	22	15	16
September	12	19	15	24	20	18
October	14	16	24	19	18	18
November	24	32	19	27	17	24
December	27	22	25	53	32	32
Total Crashes	189	185	218	314	227	227

Table 3: Alcohol-involved Crashes by Month in Torrance County, 2012-2016

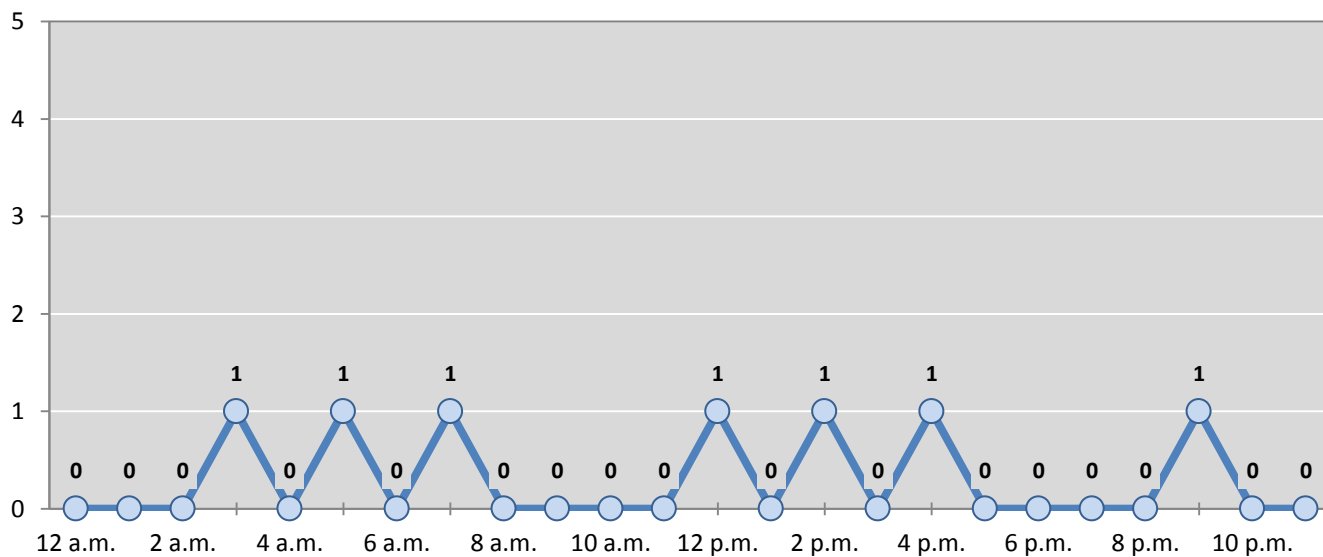
Month	Alcohol-involved Crashes					5-Year Average
	2012	2013	2014	2015	2016	
January	0	0	2	1	0	1
February	1	0	2	0	0	1
March	2	1	0	2	0	1
April	1	1	0	2	2	1
May	2	3	2	0	0	1
June	0	1	0	0	3	1
July	4	1	0	1	1	1
August	0	0	0	2	1	1
September	0	1	1	0	0	0
October	0	3	2	1	0	1
November	0	2	1	2	0	1
December	1	0	2	1	0	1
Total Crashes	11	13	12	12	7	11

Figure 2: Crashes by Hour in Torrance County, 2016



* In 2016, Torrance County had 4 crashes for which hour data were missing.

Figure 3: Alcohol-involved Crashes by Hour in Torrance County, 2016



* In 2016, Torrance County had 0 alcohol-involved crashes for which hour data were missing.

Table 4: Alcohol-involved Crashes by Day of Week in Torrance County, 2012-2016

Day of Week	Alcohol-involved Crashes					5-Year Average
	2012	2013	2014	2015	2016	
Sunday	3	2	2	1	0	2
Monday	1	1	1	1	1	1
Tuesday	2	0	1	0	0	1
Wednesday	1	3	3	4	1	2
Thursday	1	1	2	1	2	1
Friday	0	5	2	2	2	2
Saturday	3	1	1	3	1	2
Total Crashes	11	13	12	12	7	11

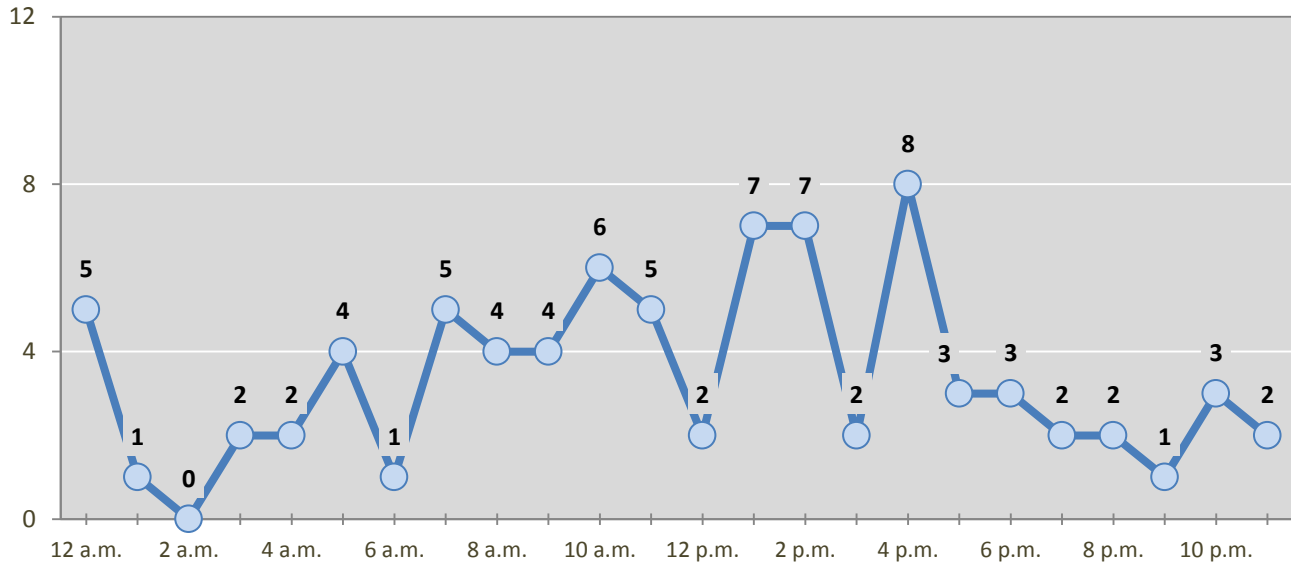
Table 5: Fatal and Injury Crashes by Day of Week in Torrance County, 2012-2016

Day of Week	Fatal and Injury Crashes					5-Year Average
	2012	2013	2014	2015	2016	
Sunday	16	9	11	18	9	13
Monday	15	8	6	16	9	11
Tuesday	7	5	6	13	12	9
Wednesday	8	6	10	10	16	10
Thursday	9	10	5	8	8	8
Friday	7	17	17	14	13	14
Saturday	11	5	14	19	15	13
Total Crashes	73	60	69	98	82	76

Table 6: Pedestrian and Pedalcyclist Crashes by Day of Week in Torrance County, 2012-2016

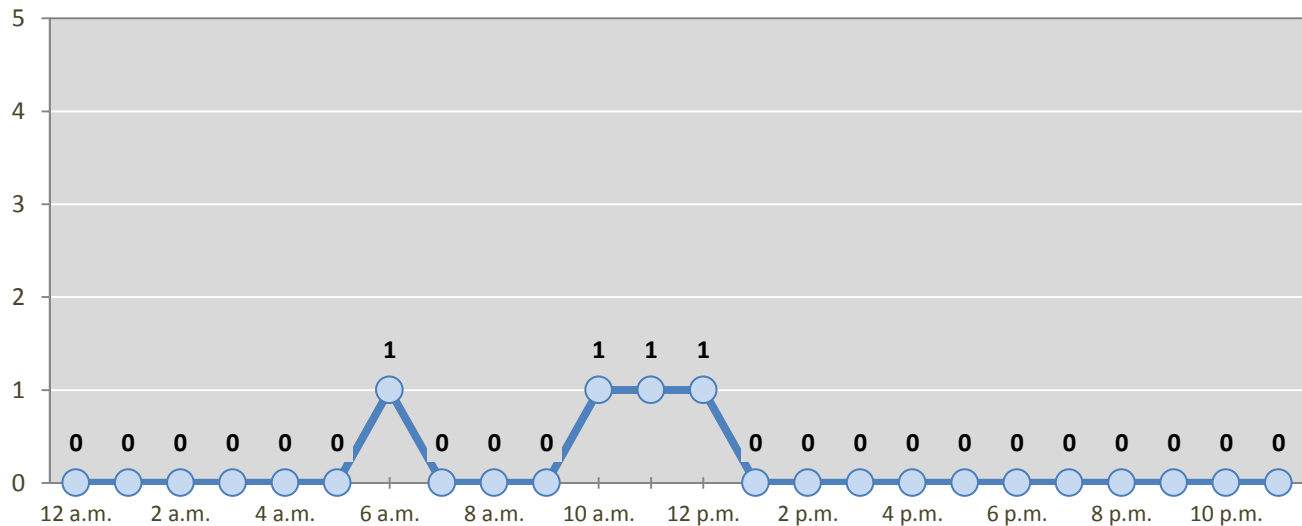
Day of Week	Pedestrian and Pedalcyclist Crashes					5-Year Average
	2012	2013	2014	2015	2016	
Sunday	0	0	1	0	0	0
Monday	0	0	1	0	1	0
Tuesday	0	0	0	1	1	0
Wednesday	1	0	0	1	1	1
Thursday	0	0	0	0	1	0
Friday	0	1	0	0	0	0
Saturday	0	0	0	0	0	0
Total Crashes	1	1	2	2	4	2

Figure 4: Fatal and Injury Crashes by Hour in Torrance County, 2016



* In 2016, Torrance County had 1 crashes for which hour data were missing.

Figure 5: Pedestrian and Pedalcyclist Crashes by Hour in Torrance County, 2016



* In 2016, Torrance County had 0 crashes for which hour data were missing.

Table 7: Severity of Injuries to People in Crashes by Rural and Urban Location in Torrance County, 2016

Urban and Rural Locations by Alcohol-involvement	People in Crashes by Severity of Injuries					Total People
	Fatalities (Class K)	Suspected Serious Injuries (Class A)	Suspected Minor Injuries (Class B)	Possible Injuries (Class C)	No Apparent Injuries (Class O)	
People in Alcohol-involved Crashes	4	1	0	6	15	26
Urban	0	0	0	0	0	0
Rural Non-Interstate	4	1	0	6	9	20
Rural Interstate	0	0	0	0	6	6
People in Crashes	12	2	24	77	382	497
Urban	0	0	0	0	0	0
Rural Non-Interstate	7	2	12	57	247	325
Rural Interstate	5	0	12	20	135	172
Percent in Alcohol-involved Crashes	33%	50%	0%	8%	4%	5%

Table 8: Total Crashes by Roadway System and Crash Severity in Torrance County, 2012-2016

Crash Severity by System	Crashes by Year					5-Year Average
	2012	2013	2014	2015	2016	
Total Rural Interstate	28	64	93	140	80	81
Fatal Crash	3	5	3	3	5	4
Injury Crash	11	20	31	39	20	24
Property Damage Only Crash	14	39	59	98	55	53
Total Rural Non-Interstate	46	51	125	174	147	108
Fatal Crash	6	2	2	4	5	4
Injury Crash	16	14	33	52	52	33
Property Damage Only Crash	24	35	90	118	90	71
Total Urban	115	70	0	0	0	38
Fatal Crash	0	3	0	0	0	1
Injury Crash	37	16	0	0	0	11
Property Damage Only Crash	78	51	0	0	0	26

Table 9: Total Crashes by Crash Classification in Torrance County, 2012-2016

Crash Classification	Total Crashes by Year					5-Year Average
	2012	2013	2014	2015	2016	
Animal	11	8	9	22	19	14
Fixed Object	23	17	36	47	28	30
Other (Non-Collision)	10	11	8	21	12	12
Other (Object)	13	9	10	13	7	10
Other Vehicle	65	88	82	131	103	94
Overturn/Rollover	53	45	50	27	25	40
Parked Vehicle	7	3	12	5	1	6
Pedalcyclist	1	0	0	0	0	0
Pedestrian	0	1	2	2	4	2
Railroad Train	1	1	0	0	0	0
Rollover	0	0	0	41	23	13
Vehicle on Other Road	3	0	5	0	3	2
Missing Data	2	2	4	5	2	3
Total Crashes	189	185	218	314	227	227

Table 10: Vehicles in Crashes by Vehicle Type in Torrance County, 2012-2016

Vehicle Type ¹	Vehicles in Crashes by Vehicle Type					5-Year Average
	2012	2013	2014	2015	2016	
Bus	1	2	3	2	0	2
Motorcycle	4	7	7	6	6	6
Passenger	93	78	85	133	129	104
Pedalcyclist	1	0	0	0	0	0
Pedestrian	0	1	2	3	4	2
Pickup	82	63	72	125	70	82
Semi	35	39	75	66	62	55
Van/SUV/4WD	27	34	40	95	63	52
Other Vehicle	3	8	2	9	2	5
Missing Data	34	59	46	42	18	40
Total Vehicles	280	291	332	481	354	348

¹ Pedestrians and pedalcyclists are counted as non-motorized vehicles, when involved in a crash with a motor vehicle. See Page 17 for data on drivers of non-motorized vehicles in crashes (i.e. pedestrians and pedalcyclists).

Table 11: Motor Vehicle Drivers in Crashes by Vehicle Type and Age Group in Torrance County, 2016

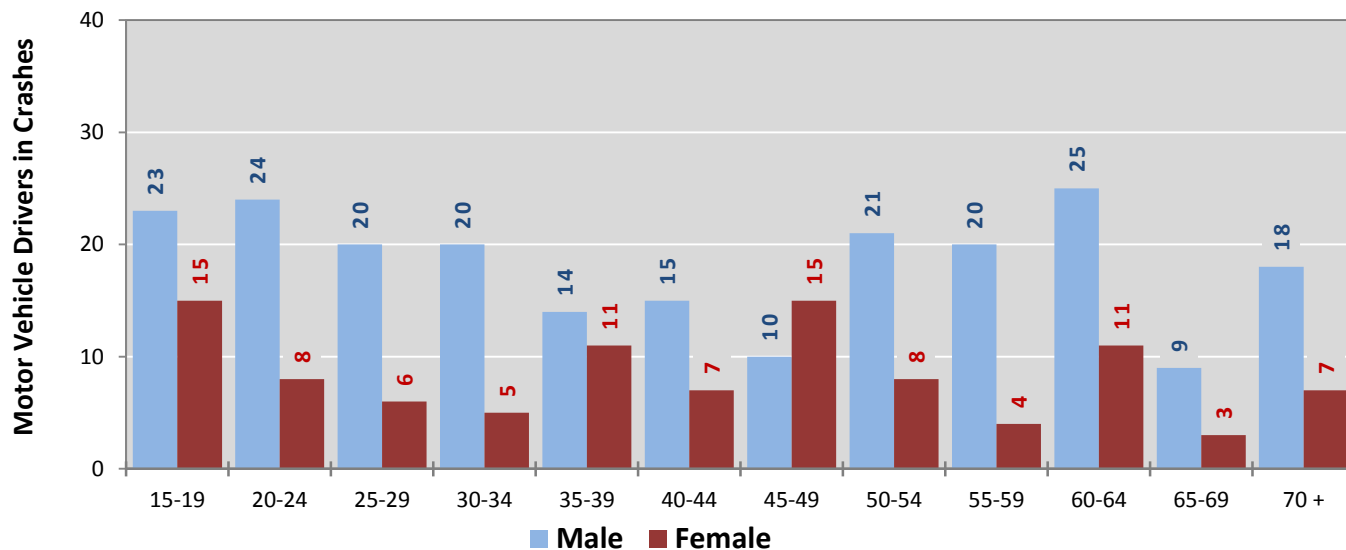
Age Groups	Motor Vehicle ¹ Drivers by Vehicle Type and Age Group								Total Drivers
	Bus	Motor-cycle	Passenger	Pickup	Semi	Van 4WD SUV	Other Vehicle	Missing Data	
15-19	0	0	24	10	1	4	0	0	39
20-24	0	0	16	5	3	6	1	1	32
25-29	0	1	14	7	3	0	0	1	26
30-34	0	1	6	8	9	1	0	0	25
35-39	0	0	10	6	1	7	0	1	25
40-44	0	0	6	5	3	7	0	1	22
45-49	0	0	11	3	5	4	0	3	26
50-54	0	1	6	10	6	5	0	1	29
55-59	0	0	5	3	9	6	0	1	24
60-64	0	1	12	4	11	8	0	0	36
65-69	0	1	3	2	4	2	0	0	12
70 +	0	1	9	5	2	7	1	1	26
Missing Data	0	0	7	2	5	6	0	8	28
Total Drivers	0	6	129	70	62	63	2	18	350

Table 12: Alcohol-involved Motor Vehicle Drivers in Crashes by Vehicle Type and Age Group in Torrance County, 2016

Age Groups	Alcohol-involved Motor Vehicle ¹ Drivers by Vehicle Type and Age Group								Total Drivers
	Bus	Motor-cycle	Passenger	Pickup	Semi	Van 4WD SUV	Other Vehicle	Missing Data	
15-19	0	0	0	0	0	0	0	0	0
20-24	0	0	2	0	0	0	0	0	2
25-29	0	0	1	0	0	0	0	0	1
30-34	0	0	0	0	0	0	0	0	0
35-39	0	0	0	0	0	0	0	0	0
40-44	0	0	0	0	0	0	0	0	0
45-49	0	0	1	0	0	0	0	0	1
50-54	0	0	1	0	0	0	0	0	1
55-59	0	0	1	0	0	1	0	0	2
60-64	0	0	0	0	0	0	0	0	0
65-69	0	0	0	0	0	0	0	0	0
70 +	0	0	0	0	0	0	0	0	0
Missing Data	0	0	0	0	0	0	0	0	0
Total Drivers	0	0	6	0	0	1	0	0	7

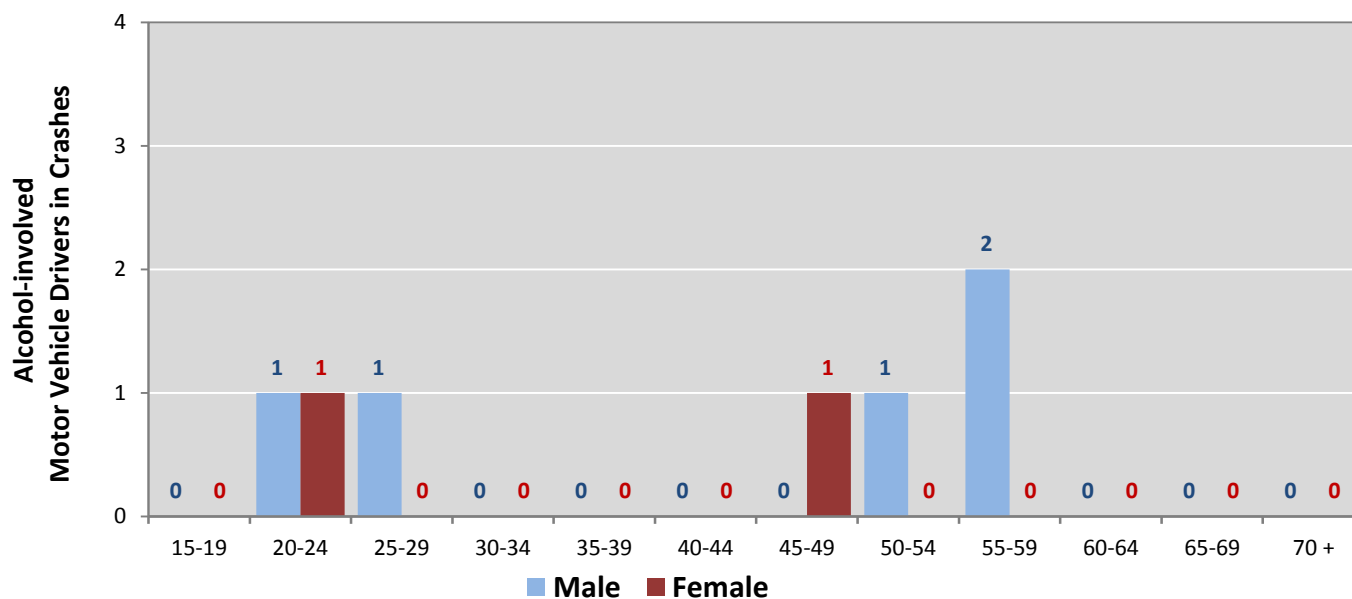
¹ See Page 17 for data on drivers of non-motorized vehicles in crashes (i.e. pedestrians and pedalcyclists).

Figure 6: Motor Vehicle Drivers in Crashes by Age Group and Sex in Torrance County, 2016



* In 2016, Torrance County had 31 drivers in crashes for which age or sex data were missing.

Figure 7: Alcohol-involved Motor Vehicle Drivers in Crashes by Age Group and Sex in Torrance County, 2016



* In 2016, Torrance County had 0 drivers in crashes for which age or sex data were missing.

Table 13: Alcohol-involved Motor Vehicle Drivers Under 21 (Ages 15-20) in Crashes in Torrance County, 2012-2016

Age ¹	Year					5-Year Total
	2012	2013	2014	2015	2016	
15	0	0	0	0	0	0
16	0	0	0	0	0	0
17	0	0	0	0	0	0
18	0	0	0	0	0	0
19	0	0	0	1	0	1
20	1	0	0	0	1	2
Total Drivers	1	0	0	1	1	3

Table 14: Motor Vehicle Drivers Under 21 (Ages 15-20) in Crashes by Age, Sex and Alcohol-involvement in Torrance County, 2016

Age ¹	Total Drivers				Alcohol-involved Drivers			
	Sex		Total Drivers	Percent of Total	Sex		Total Drivers	Percent of Total
	Male	Female			Male	Female		
15	2	1	3	7%	0	0	0	0%
16	5	5	10	23%	0	0	0	0%
17	2	2	4	9%	0	0	0	0%
18	9	4	13	30%	0	0	0	0%
19	5	3	8	18%	0	0	0	0%
20	5	1	6	14%	0	1	1	100%
Total Drivers	28	16	44	100%	0	1	1	100%

¹ For analysis of drivers under age 21, when the driver age or sex are not identified on the crash report (typically hit-and-run drivers), the driver data are considered unreliable and are excluded from the analysis.

**Table 15: Frequency of Contributing Factors in Crashes
by Crash Severity in Torrance County, 2016**

Contributing Factors	Frequency of Contributing Factor ¹ by Crash Severity			
	Frequency in Fatal Crashes	Frequency in Injury Crashes	Frequency in Property Damage Only Crashes	Frequency in All Crashes
Human	19	92	182	293
Driver Inattention	6	42	61	109
Excessive Speed	4	10	15	29
Speed Too Fast for Conditions	1	9	15	25
Failed to Yield Right of Way	1	3	16	20
Other Improper Driving	1	5	11	17
Following Too Closely	0	4	12	16
Improper Overtaking	0	5	7	12
Made Improper Turn	0	4	8	12
Avoid No Contact - Vehicle	0	1	10	11
Drove Left Of Center	0	2	7	9
Passed Stop Sign	0	3	4	7
Alcohol Involved	2	1	4	7
Improper Backing	0	0	4	4
Drug Involved	2	0	2	4
Cell Phone	0	1	1	2
Improper Lane Change	0	0	2	2
Pedestrian Error	1	1	0	2
Avoid No Contact - Other	0	0	1	1
Driverless Moving Vehicle	0	1	0	1
Failed to Yield to Emergency Vehicle	1	0	0	1
Failed to Yield to Police Vehicle	0	0	1	1
Vehicle Skidded Before Brake	0	0	1	1
Disregarded Traffic Signal	0	0	0	0
High Speed Pursuit	0	0	0	0
Texting	0	0	0	0
Vehicle	0	3	7	10
Defective Tires	0	1	3	4
Other Mechanical Defect	0	1	2	3
Inadequate Brakes	0	1	1	2
Defective Steering	0	0	1	1
Environment	0	1	3	4
Road Defect	0	0	3	3
Traffic Control Not Functioning	0	1	0	1
Low Visibility Due to Smoke	0	0	0	0
Other	5	36	94	135
None	4	20	68	92
Other - No Driver Error	1	16	26	43

¹ Multiple contributing factors may be reported for any vehicle in a crash.

Table 16: People in Crashes by Crash Classification and Severity of Injuries in Torrance County, 2016

Crash Classification	People in Crashes by Severity of Injuries					Total People
	Fatalities (Class K)	Suspected Serious Injuries (Class A)	Suspected Minor Injuries (Class B)	Possible Injuries (Class C)	No Apparent Injuries (Class O)	
Animal	0	0	2	2	26	30
Fixed Object	0	0	2	7	33	42
Other (Non-Collision)	0	0	0	2	16	18
Other (Object)	0	0	0	0	8	8
Other Vehicle	5	2	10	40	243	300
Overturn/Rollover	1	0	4	16	16	37
Parked Vehicle	0	0	0	0	3	3
Pedalcyclist	0	0	0	0	0	0
Pedestrian	1	0	2	1	7	11
Railroad Train	0	0	0	0	0	0
Rollover	5	0	4	8	21	38
Vehicle on Other Road	0	0	0	1	4	5
Missing Data	0	0	0	0	5	5
Total People	12	2	24	77	382	497

Table 17: Killed or Injured Unbelted People in Crashes by Sex and Age Group in Torrance County, 2016

Age Groups	Unbelted People Killed or Injured ^{1,2}				Total People
	Male	Percent of Male	Female	Percent of Female	
0-4	0	0%	0	0%	0
5-9	0	0%	0	0%	0
10-14	0	0%	0	0%	0
15-19	1	20%	1	50%	2
20-24	1	20%	0	0%	1
25-29	0	0%	0	0%	0
30-34	0	0%	1	50%	1
35-39	2	40%	0	0%	2
40-44	0	0%	0	0%	0
45-49	0	0%	0	0%	0
50-54	0	0%	0	0%	0
55-59	1	20%	0	0%	1
60-64	0	0%	0	0%	0
65-69	0	0%	0	0%	0
70 +	0	0%	0	0%	0
Missing Data	0	0%	0	0%	0
Total People	5	100%	2	100%	7

¹ People injured are in one of three categories: suspected serious injury, suspected minor injury, or possible injury.

² Excludes people in or on buses, heavy trucks, motorcycles, or ATVs.

Figure 8: Seatbelt Use by People in Crashes with Fatal or Suspected Serious Injuries in Torrance County, 2012-2016

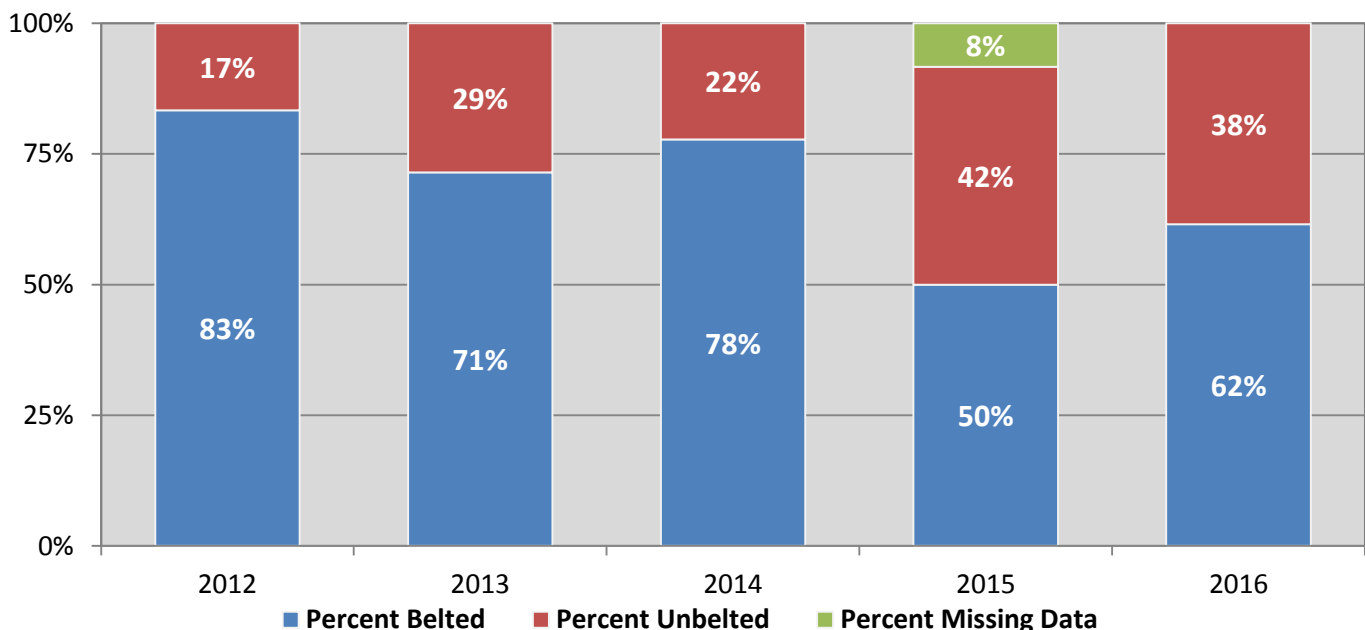
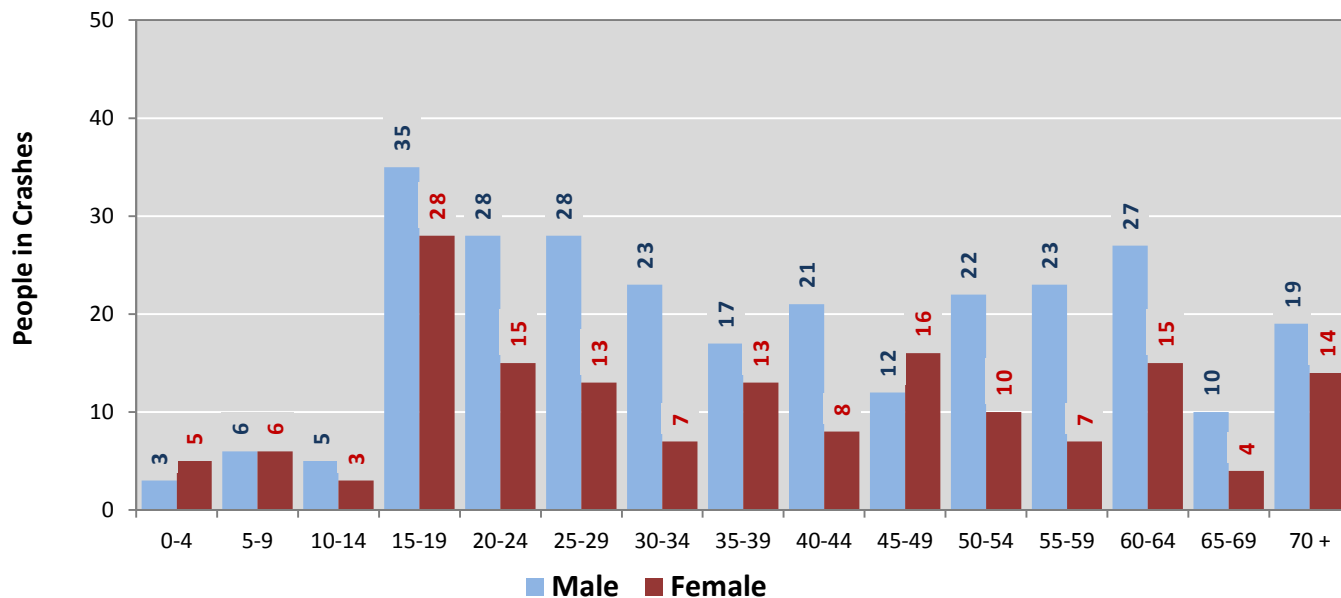
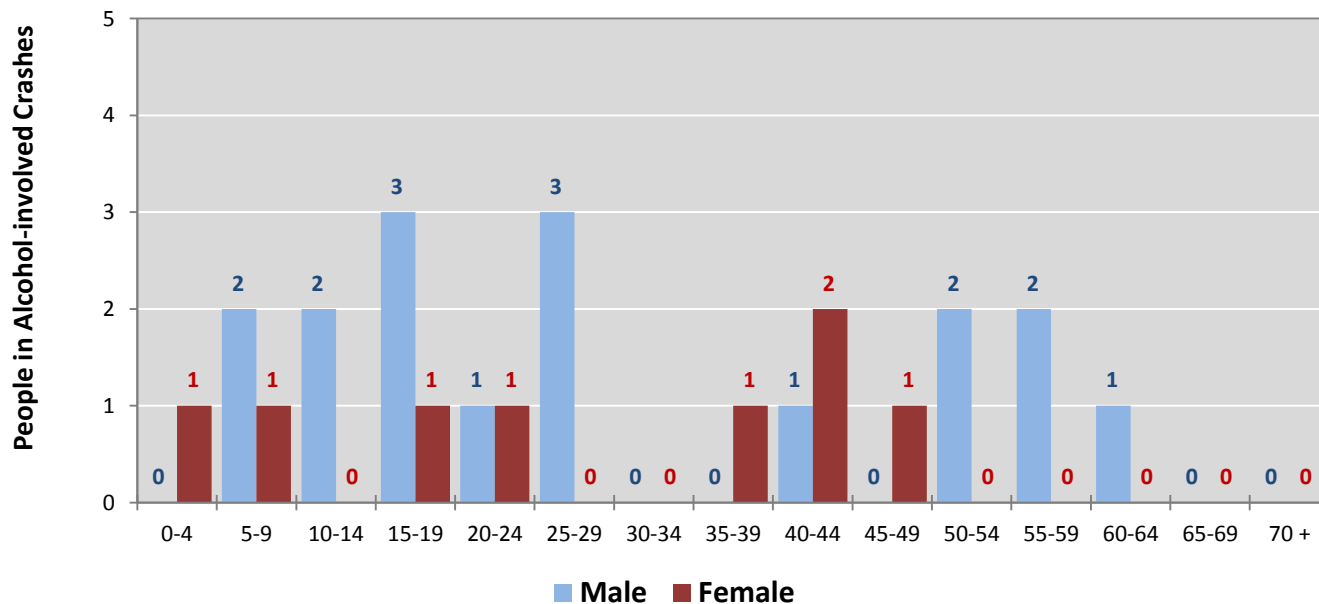


Figure 9: People in Crashes by Age Group and Sex in Torrance County, 2016



* In 2016, Torrance County had 54 people in crashes for which age or sex data were missing.

Figure 10: People in Alcohol-involved Crashes by Age Group and Sex in Torrance County, 2016



* In 2016, Torrance County had 1 people in alcohol-involved crashes for which age or sex data were missing.

Table 18: Pedestrians and Pedalcyclists in Crashes by Age Group in Torrance County, 2012-2016

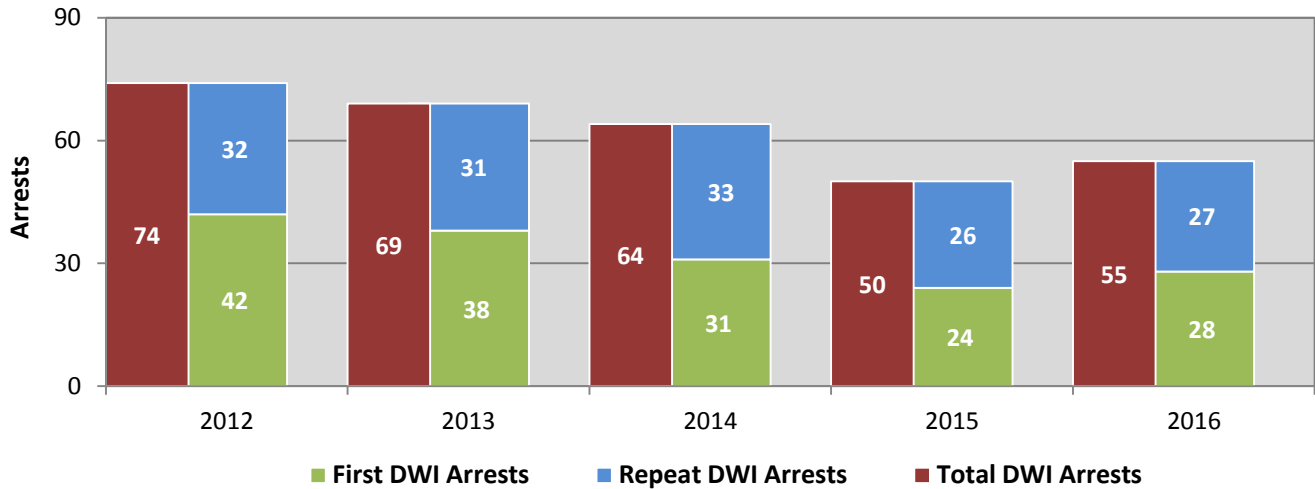
Age Groups	Pedestrians and Pedalcyclists ¹ in Crashes					5-Year Total People
	2012	2013	2014	2015	2016	
0-4	0	0	0	0	0	0
5-9	0	0	0	0	0	0
10-14	0	0	0	0	0	0
15-19	1	0	0	0	1	2
20-24	0	0	0	2	0	2
25-29	0	0	0	1	0	1
30-34	0	1	1	0	1	3
35-39	0	0	0	0	0	0
40-44	0	0	0	0	0	0
45-49	0	0	0	0	0	0
50-54	0	0	0	0	0	0
55-59	0	0	0	0	0	0
60-64	0	0	0	0	1	1
65-69	0	0	0	0	0	0
70 +	0	0	1	0	1	2
Missing Data	0	0	0	0	0	0
Total People	1	1	2	3	4	11

Table 19: Pedestrians and Pedalcyclists in Crashes by Alcohol Involvement and Severity of Injuries in Torrance County, 2016

Alcohol Involvement	Pedestrians and Pedalcyclists ¹ in Crashes					Total People
	Fatalities (Class K)	Suspected Serious Injuries (Class A)	Suspected Minor Injuries (Class B)	Possible Injuries (Class C)	No Apparent Injury (Class O)	
Total Pedalcyclists	0	0	0	0	0	0
Involved	0	0	0	0	0	0
Not Involved	0	0	0	0	0	0
Total Pedestrians	1	0	2	1	0	4
Involved	0	0	0	0	0	0
Not Involved	1	0	2	1	0	4
Total People	1	0	2	1	0	4

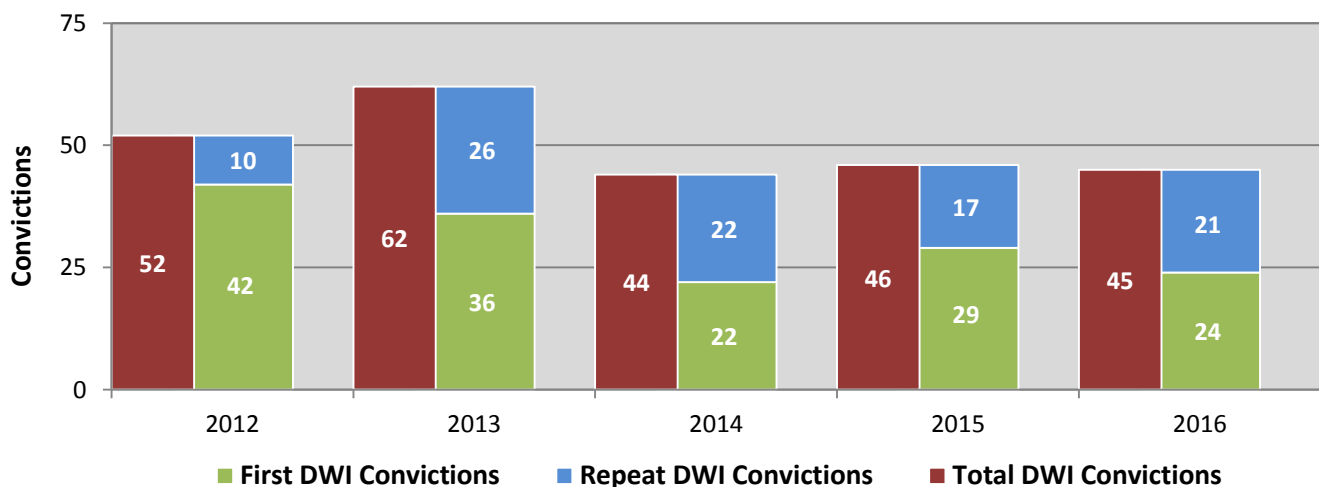
¹ Pedestrians and pedalcyclists are counted as non-motorized vehicles, when involved in a crash with a motor vehicle.

Figure 11: DWI Arrests in Torrance County Showing First and Repeat DWI Arrests, 2012-2016



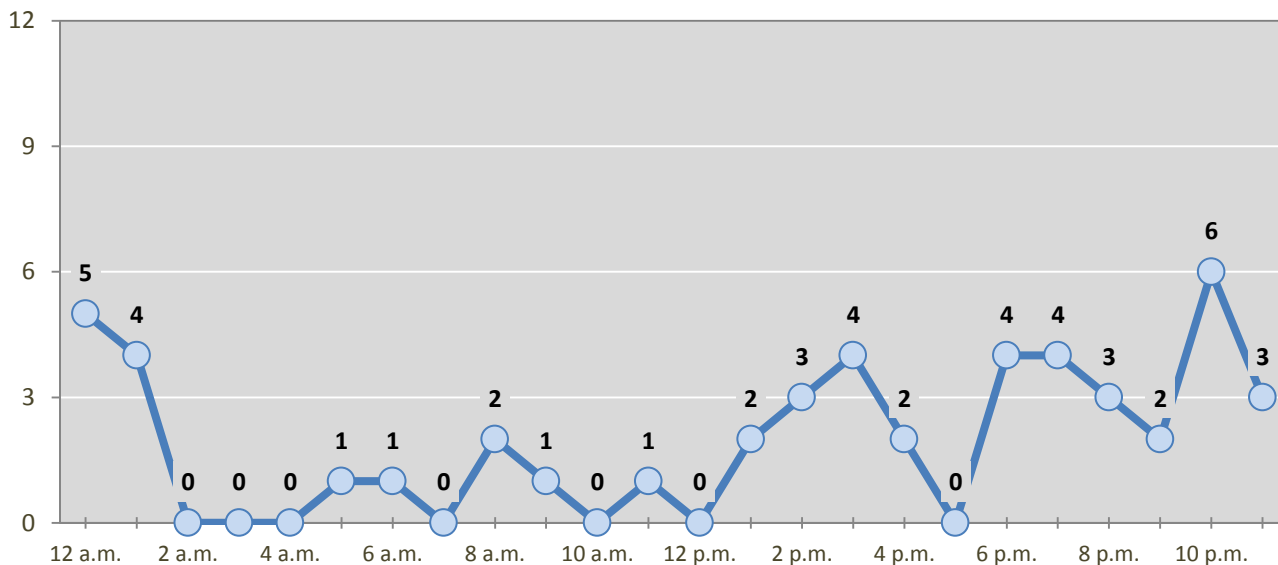
*Values are based upon the year of the arrest.

Figure 12: DWI Convictions in Torrance County Showing First and Repeat DWI Convictions, 2012-2016



*Values are based upon the year of the conviction.

Figure 13: DWI Arrests in Torrance County, 2016



* In 2016, Torrance County had 7 arrests for which hour data were missing.

Table 20: DWI Arrests by Day of Week in Torrance County, 2012-2016

Day of Week	Year					5-Year Average
	2012	2013	2014	2015	2016	
Sunday	10	11	5	1	4	6
Monday	9	4	5	4	7	6
Tuesday	5	7	5	6	7	6
Wednesday	12	16	12	6	5	10
Thursday	10	5	9	10	9	9
Friday	9	12	13	10	11	11
Saturday	19	14	15	13	12	15
Total Arrests	74	69	64	50	55	62

Table 21: Driver First DWI Arrests by Age Group in Torrance County, 2012-2016

Age Groups	Driver First DWI Arrests ¹				
	2012	2013	2014	2015	2016
15-19	1	3	2	1	1
20-24	10	6	3	7	6
25-29	6	4	5	6	3
30-34	7	4	4	1	2
35-39	1	4	2	2	4
40-44	4	6	7	1	3
45-49	3	1	3	3	4
50-54	5	5	0	1	1
55-59	2	2	1	1	1
60-64	2	2	2	0	2
65-69	1	0	1	0	0
70 +	0	1	0	0	0
Missing Data	0	0	1	1	1
Total Drivers	42	38	31	24	28

¹ Values are based upon the year of the arrest.

Table 22: Driver Repeat DWI Arrests by Age Group in Torrance County, 2012-2016

Age Groups	Driver Repeat DWI Arrests ¹				
	2012	2013	2014	2015	2016
15-19	0	0	0	0	0
20-24	5	0	2	1	0
25-29	3	3	2	1	3
30-34	4	7	5	3	2
35-39	4	5	6	2	6
40-44	2	2	4	7	4
45-49	2	3	3	4	5
50-54	5	4	5	4	2
55-59	3	3	3	1	3
60-64	4	3	2	2	2
65-69	0	1	0	1	0
70 +	0	0	0	0	0
Missing Data	0	0	1	0	0
Total Drivers	32	31	33	26	27

¹ Values are based upon the year of the arrest.

Table 23: Driver First DWI Convictions by Age Group in Torrance County, 2012-2016

Age Groups	Driver First DWI Convictions ¹				
	2012	2013	2014	2015	2016
15-19	1	1	0	0	1
20-24	8	8	4	6	6
25-29	9	3	4	2	3
30-34	6	4	3	4	1
35-39	4	2	1	3	5
40-44	4	6	3	7	3
45-49	2	2	1	1	1
50-54	3	5	2	2	2
55-59	3	2	2	0	1
60-64	2	2	1	2	1
65-69	0	0	1	0	0
70 +	0	1	0	0	0
Missing Data	0	0	0	2	0
Total Drivers	42	36	22	29	24

¹ Values are based upon the year of the conviction.

Table 24: Driver Repeat DWI Convictions by Age Group in Torrance County, 2012-2016

Age Groups	Driver Repeat DWI Convictions ¹				
	2012	2013	2014	2015	2016
15-19	0	0	0	0	0
20-24	1	1	0	0	0
25-29	0	3	1	1	1
30-34	1	5	4	3	2
35-39	2	4	5	2	3
40-44	1	2	1	1	3
45-49	1	2	4	4	6
50-54	2	2	3	4	0
55-59	0	5	2	1	3
60-64	2	1	2	0	3
65-69	0	1	0	1	0
70 +	0	0	0	0	0
Missing Data	0	0	0	0	0
Total Drivers	10	26	22	17	21

¹ Values are based upon the year of the conviction.

Table 25: Court Disposition of DWI Arrests for Torrance County and the State, 2016

Court Disposition of DWI Arrest ¹	Torrance County	Statewide	Percent of Statewide
Total DWI Arrests	55	10,344	0.5%
DWI Arrests Resulting in Convictions	38	5,541	0.7%
DWI Arrests Resulting in Dismissals ²	1	1,512	0.1%
DWI Arrests Awaiting Disposition	16	3,291	0.5%

¹ These are the number of DWI arrests in 2016 and whether the case resulted in a conviction or dismissal, or is still awaiting court disposition, as reported in the NM MVD Citation Tracking System (CTS) as of December 2017.

² For this table, a very small number of "not guilty" rulings may be included in the category Dismissals.

Table 26: Average Number of Days from Date of DWI Arrest to Date of Court Disposition in Torrance County and the State, 2016

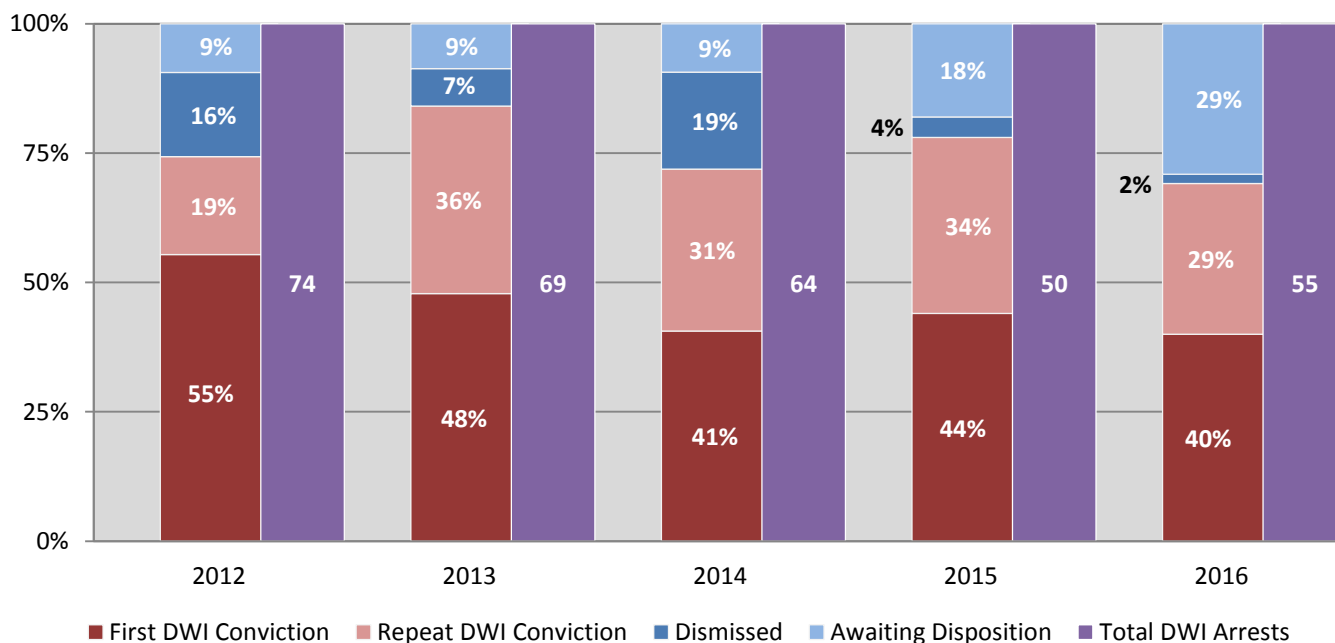
Court Disposition	Average Number of Days		Deviation from Statewide Average
	Torrance County	Statewide	
DWI Conviction	109	157	-48
DWI Dismissal	473	179	294

Table 27: Court Disposition of DWI Arrests in Torrance County, 2012-2016

Year of DWI Arrest ¹	Court Disposition				Total DWI Arrests
	First DWI Conviction	Repeat DWI Conviction	Dismissed	Awaiting Disposition	
2012	41	14	12	7	74
2013	33	25	5	6	69
2014	26	20	12	6	64
2015	22	17	2	9	50
2016	22	16	1	16	55

¹ Values are based upon the year of the arrest.

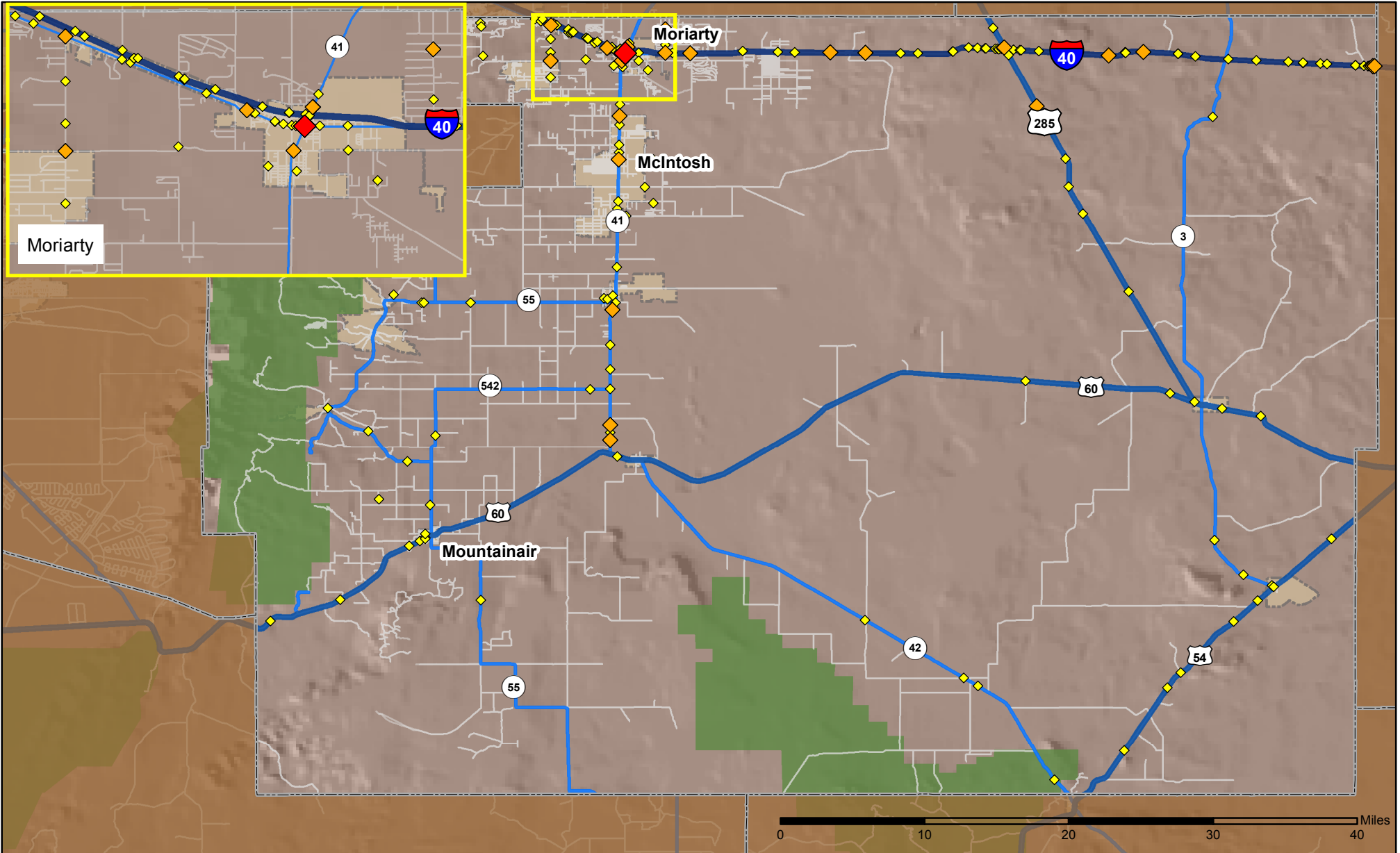
Figure 14: Court Dispositions by Percentage of DWI Arrests in Torrance County, 2012-2016



*Table 27 contains the values used to calculate percentages shown in Figure 14.

Crashes in Torrance County, New Mexico, 2016

Map created by the Traffic Research Unit, Geospatial & Population Studies at UNM



Legend

Data Source: NMDOT Crash File 2016
<http://tru.unm.edu> CO#5801 tru@unm.edu

- Forest & Wildlife Areas
- Reservations & Pueblos
- County Boundaries
- City Boundaries

- Interstate Highways
- U.S. Highways
- State Highways
- Streets & Roadways

Crashes 2016

- 1 Crash
- 2 - 4 Crashes
- 5 - 11 Crashes