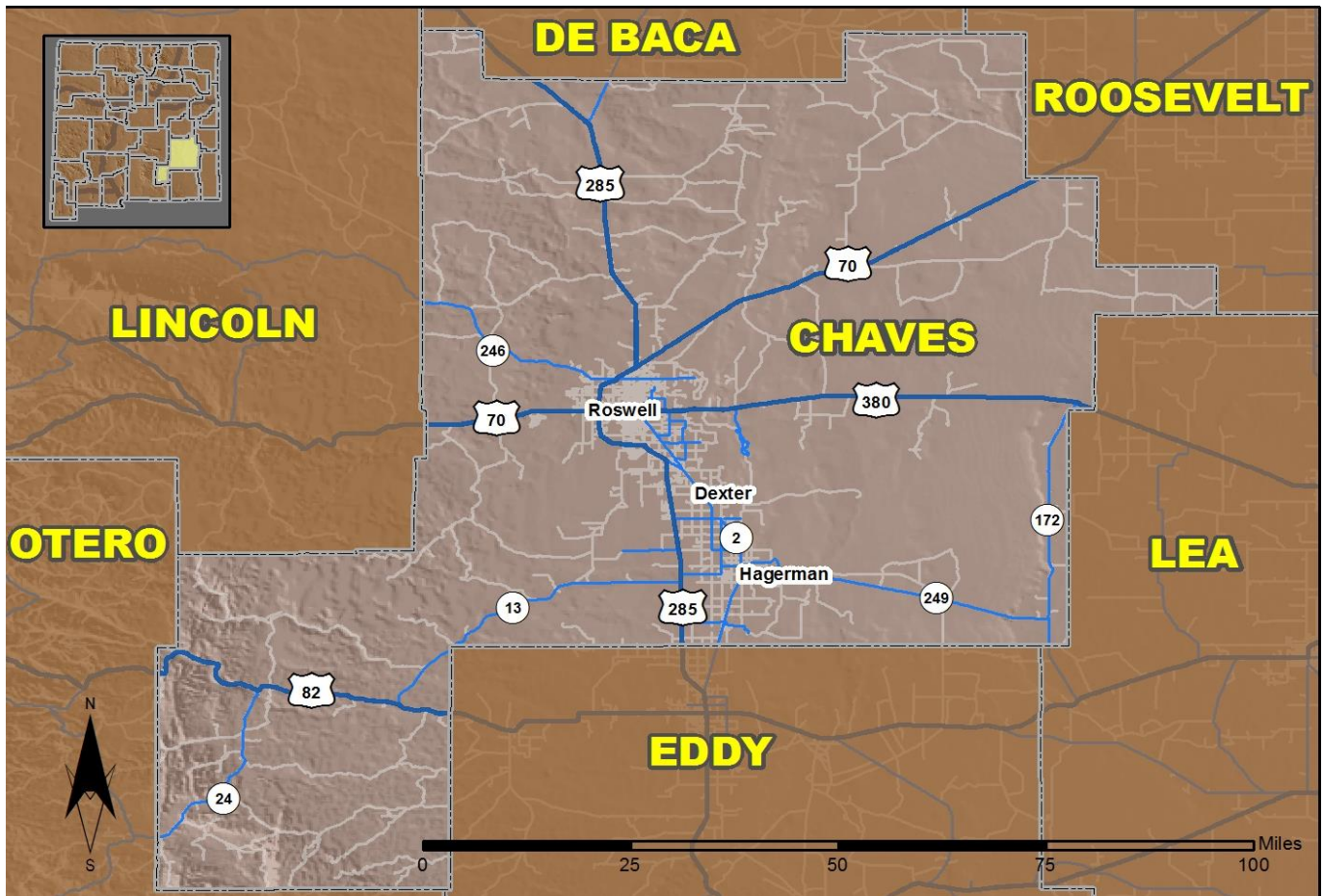


2017 Community Report

Roswell



Produced for the New Mexico Department of Transportation,
Traffic Safety Division, Traffic Records Bureau,
Under Contract 6093 by the University of New Mexico,
Geospatial and Population Studies, Traffic Research Unit

Distributed in compliance with New Mexico Statute 66-7-214
as a reference source regarding New Mexico traffic crashes

For the purposes of this report, data are compiled by the University of New Mexico, Geospatial and Population Studies, Traffic Research Unit (TRU), on behalf of the New Mexico Department of Transportation (NMDOT). Data in this report may differ from that in other data sources, such as the Federal Fatality Analysis Reporting System (FARS), due to the timing of publications and rules for how data are compiled and maintained in Federal vs. State databases. If you have questions regarding this report, please contact the Traffic Safety Division at 505-827-0427.

<http://tru.unm.edu/Crash-Reports/Community-Reports/>

Definitions

Aggravated DWI – A driver arrested for 1) driving with a BAC of 0.16 or higher, 2) driving under the influence of alcohol or drugs and causing bodily injury to a human being as a result, or 3) driving under the influence of alcohol or drugs and refusing to submit to a BAC test at the time of arrest for DWI.

Alcohol-involved Crash – A crash for which the Uniform Crash Report indicated that 1) a DWI citation was issued, 2) alcohol was a contributing factor, or 3) a person in control of a vehicle (including a pedestrian or pedalcyclist) was suspected of being under the influence of alcohol.

Alcohol-involved Driver – A person in control of a vehicle who was cited for DWI or indicated on the Uniform Crash Report as being either suspected or determined by testing to be under the influence of alcohol. There can be multiple alcohol-involved drivers in a single alcohol-involved crash.

Crash – A reported incident on a public roadway involving one or more motor vehicles that resulted in death, personal injury, or at least \$500 in property damage. Crashes on private property (such as a parking lot) are not included.

DWI Arrest (Citation) – In this report, a DWI arrest (a.k.a. a DWI citation) is a driver arrested for either DWI or aggravated DWI. New Mexico’s legal limit for presumption of driving while intoxicated (DWI) is 0.08 for non-commercial drivers older than 21 years of age, 0.04 for commercial vehicle drivers, and 0.02 for drivers younger than 21 years of age.

DWI Conviction – A driver convicted of driving under the intoxicating influence of alcohol, narcotics, or pathogenic drugs, including aggravated DWI.

Fatal Crash – A crash in which at least one person was killed. More than one person can be killed in a single fatal crash.

Fatalities – The number of people killed in a crash. The terms “killed” and “deaths” are synonymous with “fatalities.” A fatality is crash-related if it occurs at the time of the crash or if the person(s) involved in the crash dies within 30 days.

Injury Crash – A reported crash in which at least one person was injured. Injury crashes involve at least one suspected serious injury (Class A), suspected minor injury (Class B), or possible injury (Class C). Fatal crashes are not included.

Missing Data – An indication that the applicable field on the UCR form was left blank or contained an invalid code. Starting with crashes that occurred in 2012, improvements in the identification of missing data in the NMDOT crash database led to an increase in the reported amount of missing data.

Pedalcyclist – A person riding a mechanism of transport that is powered solely by pedals (a.k.a. bicyclist).

Pedestrian – A person on foot, walking, running, jogging, hiking, sitting or lying down who is involved in a motor vehicle traffic crash.

Sources

Crash Data – New Mexico Department of Transportation, Traffic Safety Division, Traffic Records Bureau, Traffic Crash Database, as of the report date below. Crash data are compiled using NMDOT Uniform Crash Reports (UCR), submitted by law enforcement agencies in the state, for any incident on a public roadway involving one or more motor vehicles that resulted in death, injury, or at least \$500 in property damage. These reports are processed by the NMDOT Traffic Records Bureau and analyzed by the University of New Mexico, Geospatial and Population Studies, Traffic Research Unit (TRU).

DWI Citation Tracking System (CTS) – New Mexico Taxation and Revenue Department (NM TRD), Motor Vehicle Division (MVD), DWI Citation Tracking System (CTS), as of February 2019. Repeat offenders are identified by the combination of account key, arrest date, and citation number. County data are based upon the county where the arrest took place. City data are based upon the city where the offender resides.

Urban Areas – New Mexico Department of Transportation, Asset Management and Planning, 2010 U.S. Census Urbanized Area Boundaries, NMDOT-Adjusted, and U.S. Census Urban Clusters, August 21, 2013. In crashes before 2013, “urban” was defined as a town or city with a population of at least 2,500 people.

Table 1: Total Crashes and Alcohol-involved Crashes by Crash Severity in Roswell, 2008-2017

Year	Total Crashes				Alcohol-involved Crashes			
	Fatal	Injury	Property Damage Only	Total	Fatal	Injury	Property Damage Only	Total
2008	5	309	1,009	1,323	1	27	47	75
2009	4	281	913	1,198	1	29	31	61
2010	2	260	897	1,159	0	18	31	49
2011	4	283	784	1,071	1	19	27	47
2012	3	399	1,192	1,594	2	25	48	75
2013	5	287	853	1,145	2	12	15	29
2014	1	243	743	987	1	28	20	49
2015	4	280	808	1,092	2	18	23	43
2016	2	309	823	1,134	1	11	20	32
2017	4	298	772	1,074	2	14	18	34

Figure 1: Alcohol-involved Fatal and Injury Crashes Compared with Non-alcohol-involved Fatal and Injury Crashes in Roswell, 2008-2017

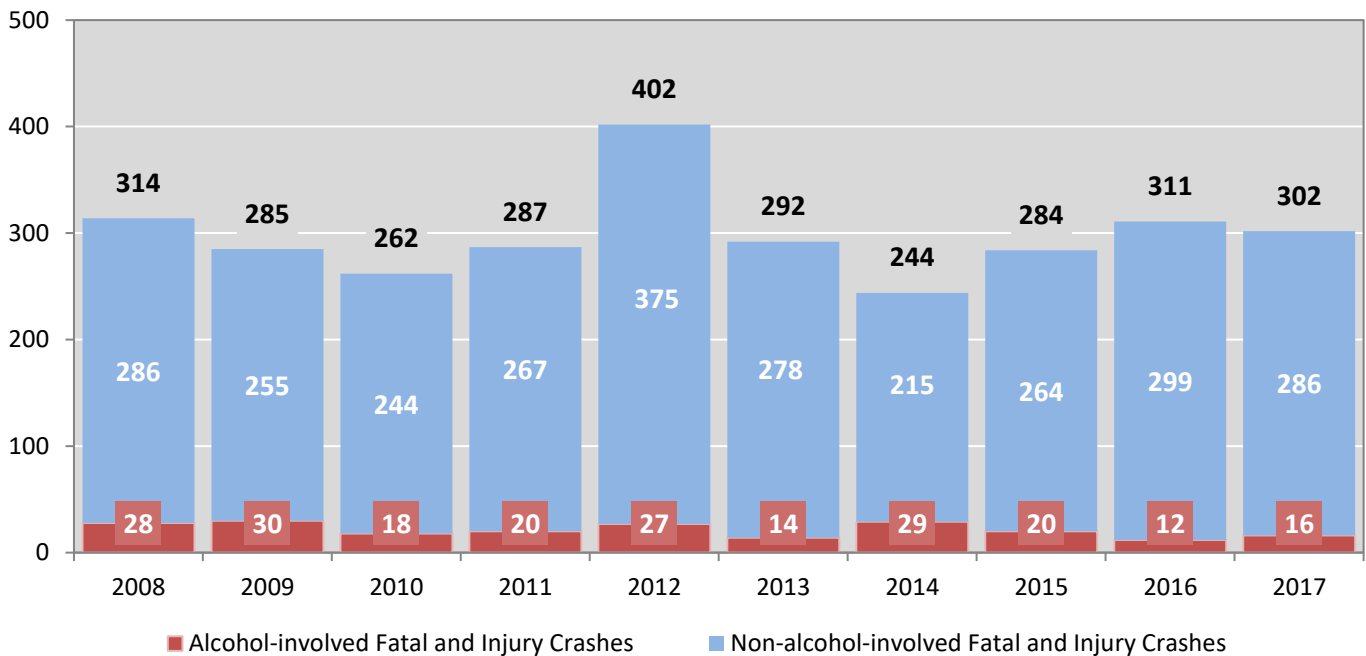


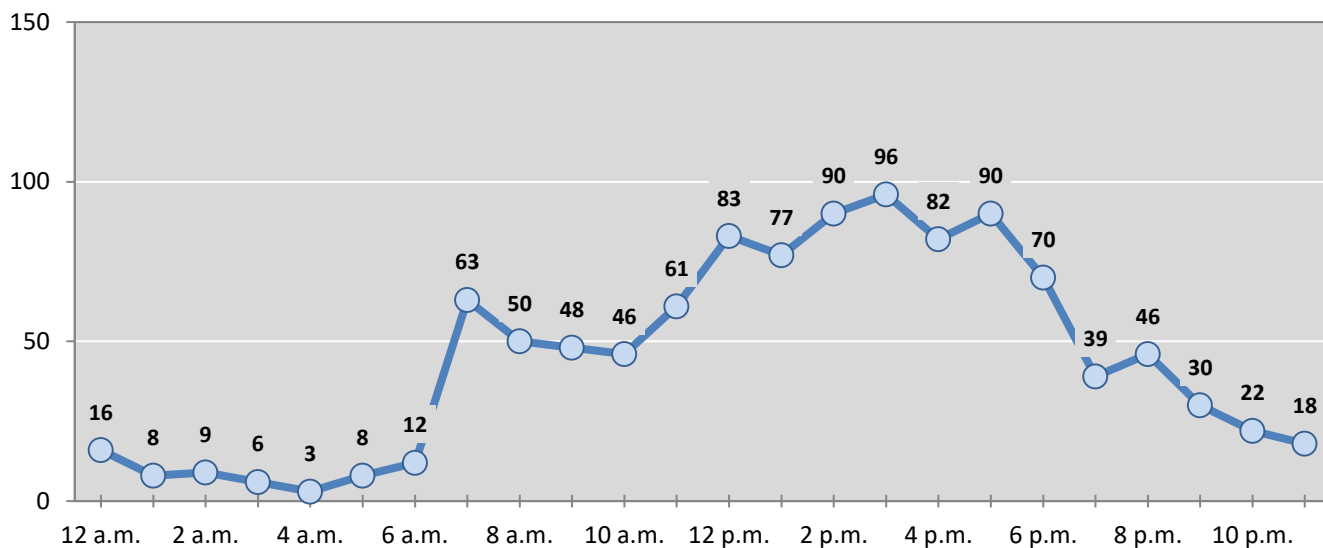
Table 2: Crashes by Month in Roswell, 2013-2017

Month	Crashes					5-Year Average
	2013	2014	2015	2016	2017	
January	90	77	101	118	101	97
February	84	87	91	110	87	92
March	89	70	93	92	93	87
April	100	24	105	87	90	81
May	96	87	81	94	109	93
June	96	87	92	86	94	91
July	105	87	94	90	88	93
August	104	72	89	100	68	87
September	81	97	84	105	99	93
October	108	104	100	90	89	98
November	91	76	82	71	76	79
December	101	119	80	91	80	94
Total Crashes	1,145	987	1,092	1,134	1,074	1,086

Table 3: Alcohol-involved Crashes by Month in Roswell, 2013-2017

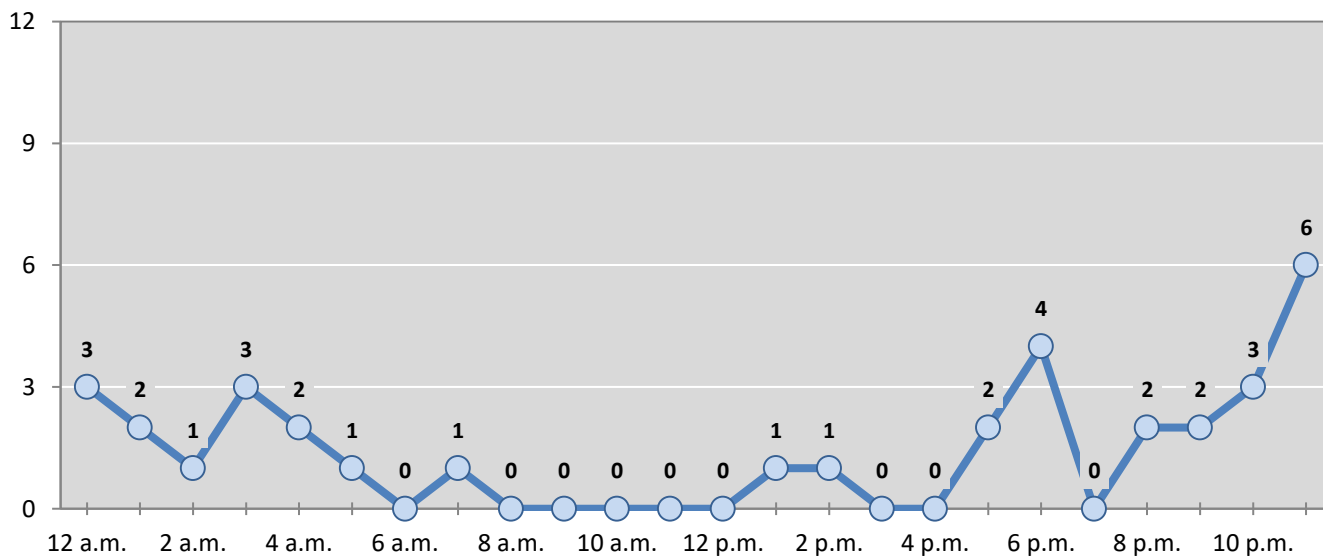
Month	Alcohol-involved Crashes					5-Year Average
	2013	2014	2015	2016	2017	
January	3	4	4	3	2	3
February	3	3	2	1	1	2
March	0	5	2	2	4	3
April	3	1	4	1	1	2
May	1	6	4	6	4	4
June	7	4	4	2	9	5
July	2	4	3	4	3	3
August	1	5	6	3	2	3
September	2	3	4	3	4	3
October	3	3	4	1	2	3
November	2	3	3	3	2	3
December	2	8	3	3	0	3
Total Crashes	29	49	43	32	34	37

Figure 2: Crashes by Hour in Roswell, 2017



* In 2017, Roswell had 1 crashes for which hour data were missing.

Figure 3: Alcohol-involved Crashes by Hour in Roswell, 2017



* In 2017, Roswell had 0 alcohol-involved crashes for which hour data were missing.

Table 4: Alcohol-involved Crashes by Day of Week in Roswell, 2013-2017

Day of Week	Alcohol-involved Crashes					5-Year Average
	2013	2014	2015	2016	2017	
Sunday	7	13	6	6	4	7
Monday	3	9	5	4	7	6
Tuesday	3	4	5	4	3	4
Wednesday	3	5	2	5	5	4
Thursday	5	5	5	5	3	5
Friday	4	3	7	3	7	5
Saturday	4	10	13	5	5	7
Total Crashes	29	49	43	32	34	37

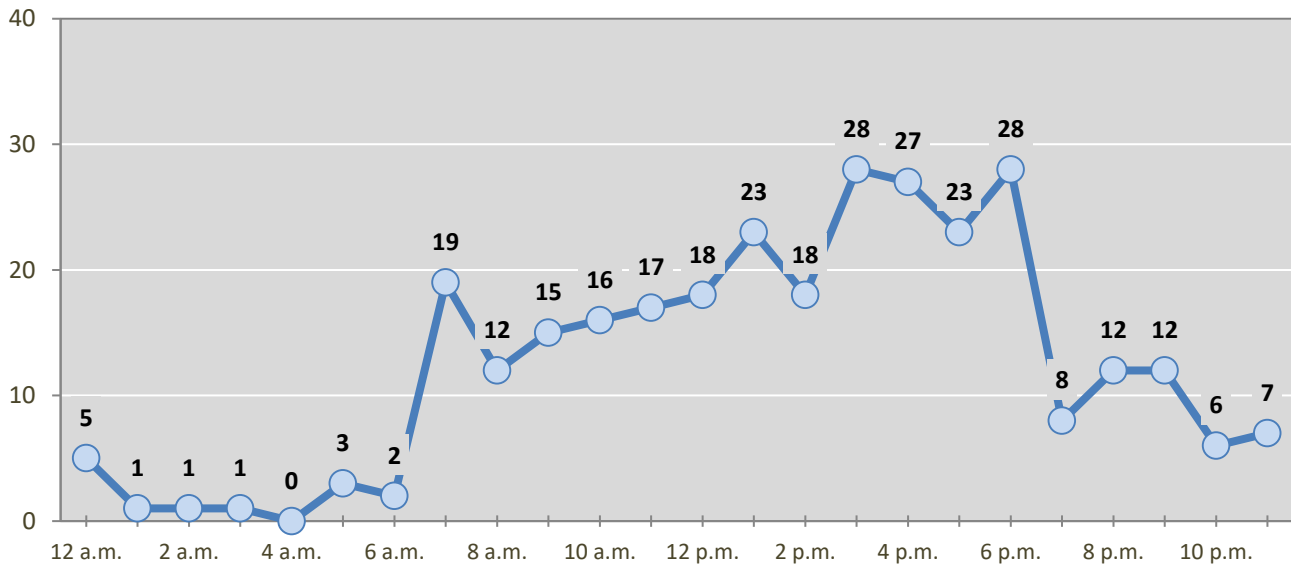
Table 5: Fatal and Injury Crashes by Day of Week in Roswell, 2013-2017

Day of Week	Fatal and Injury Crashes					5-Year Average
	2013	2014	2015	2016	2017	
Sunday	38	22	25	23	27	27
Monday	48	34	30	43	47	40
Tuesday	43	37	44	38	44	41
Wednesday	39	38	35	58	65	47
Thursday	47	39	54	48	36	45
Friday	46	48	58	54	54	52
Saturday	31	26	38	47	29	34
Total Crashes	292	244	284	311	302	287

Table 6: Pedestrian and Pedalcyclist Crashes by Day of Week in Roswell, 2013-2017

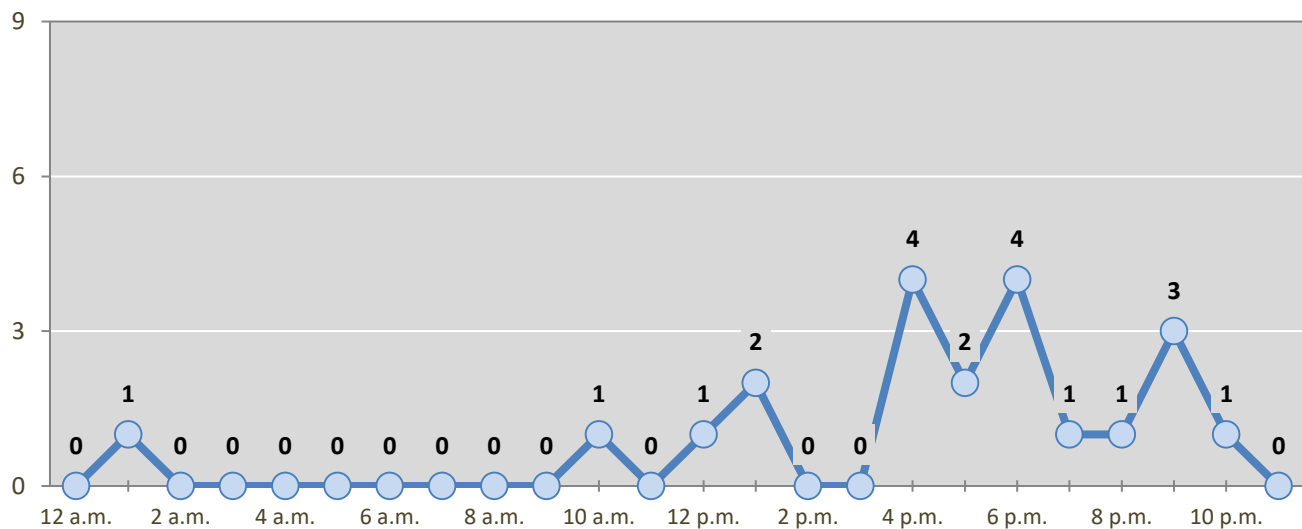
Day of Week	Pedestrian and Pedalcyclist Crashes					5-Year Average
	2013	2014	2015	2016	2017	
Sunday	2	0	3	3	0	2
Monday	6	3	5	3	5	4
Tuesday	1	3	6	0	4	3
Wednesday	3	5	3	5	4	4
Thursday	1	0	7	4	3	3
Friday	1	2	6	6	2	3
Saturday	2	3	2	1	3	2
Total Crashes	16	16	32	22	21	21

Figure 4: Fatal and Injury Crashes by Hour in Roswell, 2017



* In 2017, Roswell had 0 crashes for which hour data were missing.

Figure 5: Pedestrian and Pedalcyclist Crashes by Hour in Roswell, 2017



* In 2017, Roswell had 0 crashes for which hour data were missing.

Table 7: Severity of Injuries to People in Crashes by Rural and Urban Location in Roswell, 2017

Urban and Rural Locations by Alcohol-involvement	People in Crashes by Severity of Injuries					Total People
	Fatalities (Class K)	Suspected Serious Injuries (Class A)	Suspected Minor Injuries (Class B)	Possible Injuries (Class C)	No Apparent Injuries (Class O)	
People in Alcohol-involved Crashes	2	3	10	6	56	77
Urban	2	3	9	6	56	76
Rural Non-Interstate	0	0	1	0	0	1
Rural Interstate	0	0	0	0	0	0
People in Crashes	4	24	81	284	2,448	2,841
Urban	4	24	79	283	2,430	2,820
Rural Non-Interstate	0	0	2	1	18	21
Rural Interstate	0	0	0	0	0	0
Percent in Alcohol-involved Crashes	50%	13%	12%	2%	2%	3%

Table 8: Total Crashes by Roadway System and Crash Severity in Roswell, 2013-2017

Crash Severity by System	Crashes by Year					5-Year Average
	2013	2014	2015	2016	2017	
Total Rural Interstate	0	0	0	0	0	0
Fatal Crash	0	0	0	0	0	0
Injury Crash	0	0	0	0	0	0
Property Damage Only Crash	0	0	0	0	0	0
Total Rural Non-Interstate	26	61	10	7	10	23
Fatal Crash	1	1	0	0	0	0
Injury Crash	11	22	5	3	3	9
Property Damage Only Crash	14	38	5	4	7	14
Total Urban	1,119	926	1,082	1,127	1,064	1,064
Fatal Crash	4	0	4	2	4	3
Injury Crash	276	221	275	306	295	275
Property Damage Only Crash	839	705	803	819	765	786

Table 9: Total Crashes by Crash Classification in Roswell, 2013-2017

Crash Classification	Total Crashes by Year					5-Year Average
	2013	2014	2015	2016	2017	
Animal	9	13	12	6	11	10
Fixed Object	93	94	100	103	89	96
Other (Non-Collision)	6	11	14	18	18	13
Other (Object)	9	16	10	13	4	10
Other Vehicle	780	618	736	763	769	733
Overturn/Rollover	17	32	3	10	12	15
Parked Vehicle	175	145	140	156	140	151
Pedalcyclist	5	7	15	13	15	11
Pedestrian	11	10	18	9	6	11
Railroad Train	2	0	0	0	1	1
Rollover	0	0	2	2	4	2
Vehicle on Other Road	8	8	12	21	5	11
Missing Data	30	33	30	20	0	23
Total Crashes	1,145	987	1,092	1,134	1,074	1,086

Table 10: Vehicles in Crashes by Vehicle Type in Roswell, 2013-2017

Vehicle Type ¹	Vehicles in Crashes by Vehicle Type					5-Year Average
	2013	2014	2015	2016	2017	
Bus	6	6	2	4	6	5
Motorcycle	21	19	13	26	31	22
Passenger	1,157	972	1,213	1,321	1,076	1,148
Pedalcyclist	5	7	14	13	15	11
Pedestrian	11	10	19	9	6	11
Pickup	464	431	406	395	470	433
Semi	45	31	44	40	34	39
Van/SUV/4WD	301	245	206	248	368	274
Other Vehicle	22	14	52	15	2	21
Missing Data	151	181	124	116	82	131
Total Vehicles	2,183	1,916	2,093	2,187	2,090	2,094

¹ Pedestrians and pedalcyclists are counted as non-motorized vehicles, when involved in a crash with a motor vehicle. See Page 17 for data on drivers of non-motorized vehicles in crashes (i.e. pedestrians and pedalcyclists).

Table 11: Motor Vehicle Drivers in Crashes by Vehicle Type and Age Group in Roswell, 2017

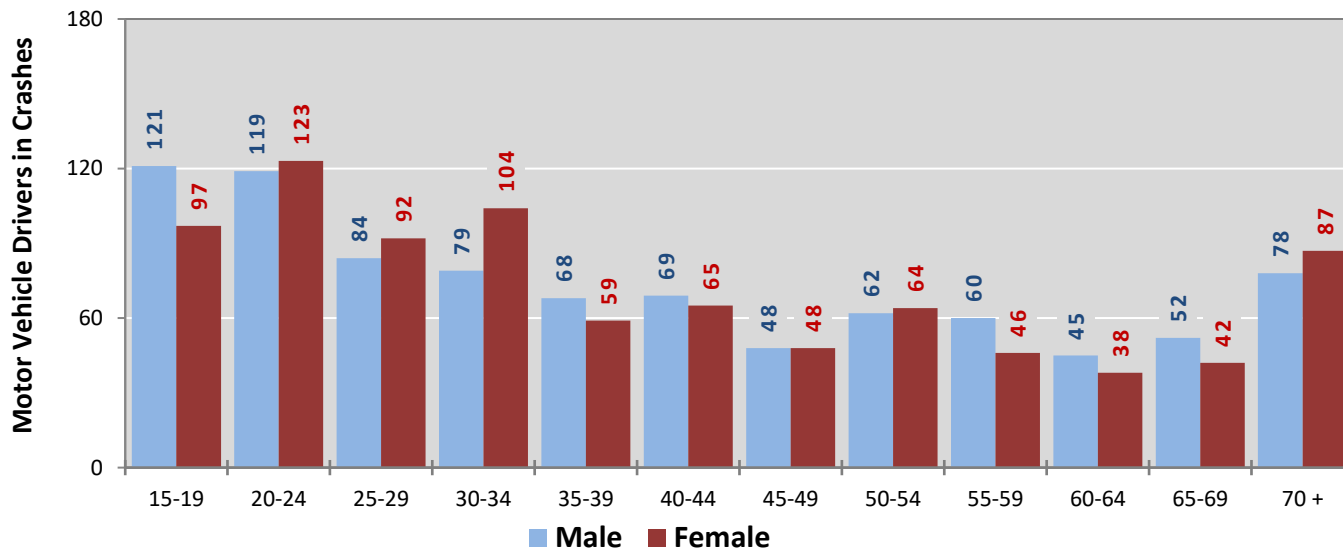
Age Groups	Motor Vehicle ¹ Drivers by Vehicle Type and Age Group								Total Drivers
	Bus	Motor-cycle	Passenger	Pickup	Semi	Van 4WD SUV	Other Vehicle	Missing Data	
15-19	0	2	149	47	0	20	0	0	218
20-24	0	3	161	43	4	30	0	1	242
25-29	0	2	109	34	2	29	0	0	176
30-34	0	4	88	34	7	49	0	1	183
35-39	0	3	65	32	3	24	0	0	127
40-44	1	2	70	35	2	24	0	0	134
45-49	0	1	43	29	2	21	0	0	96
50-54	0	2	55	42	1	26	0	0	126
55-59	1	4	45	32	4	18	0	2	106
60-64	1	3	32	22	1	24	0	0	83
65-69	1	1	41	24	2	24	0	1	94
70 +	1	1	87	28	2	46	0	0	165
Missing Data	1	3	131	68	4	33	2	77	319
Total Drivers	6	31	1,076	470	34	368	2	82	2,069

Table 12: Alcohol-involved Motor Vehicle Drivers in Crashes by Vehicle Type and Age Group in Roswell, 2017

Age Groups	Alcohol-involved Motor Vehicle ¹ Drivers by Vehicle Type and Age Group								Total Drivers
	Bus	Motor-cycle	Passenger	Pickup	Semi	Van 4WD SUV	Other Vehicle	Missing Data	
15-19	0	0	1	0	0	0	0	0	1
20-24	0	0	4	4	0	0	0	0	8
25-29	0	0	1	1	0	0	0	0	2
30-34	0	1	4	0	0	1	0	0	6
35-39	0	1	2	1	0	1	0	0	5
40-44	0	0	0	0	0	1	0	0	1
45-49	0	0	1	2	0	1	0	0	4
50-54	0	0	1	0	0	0	0	0	1
55-59	0	0	1	1	0	1	0	0	3
60-64	0	0	0	1	0	0	0	0	1
65-69	0	0	0	0	0	0	0	0	0
70 +	0	0	0	0	0	0	0	0	0
Missing Data	0	0	0	0	0	0	0	0	0
Total Drivers	0	2	15	10	0	5	0	0	32

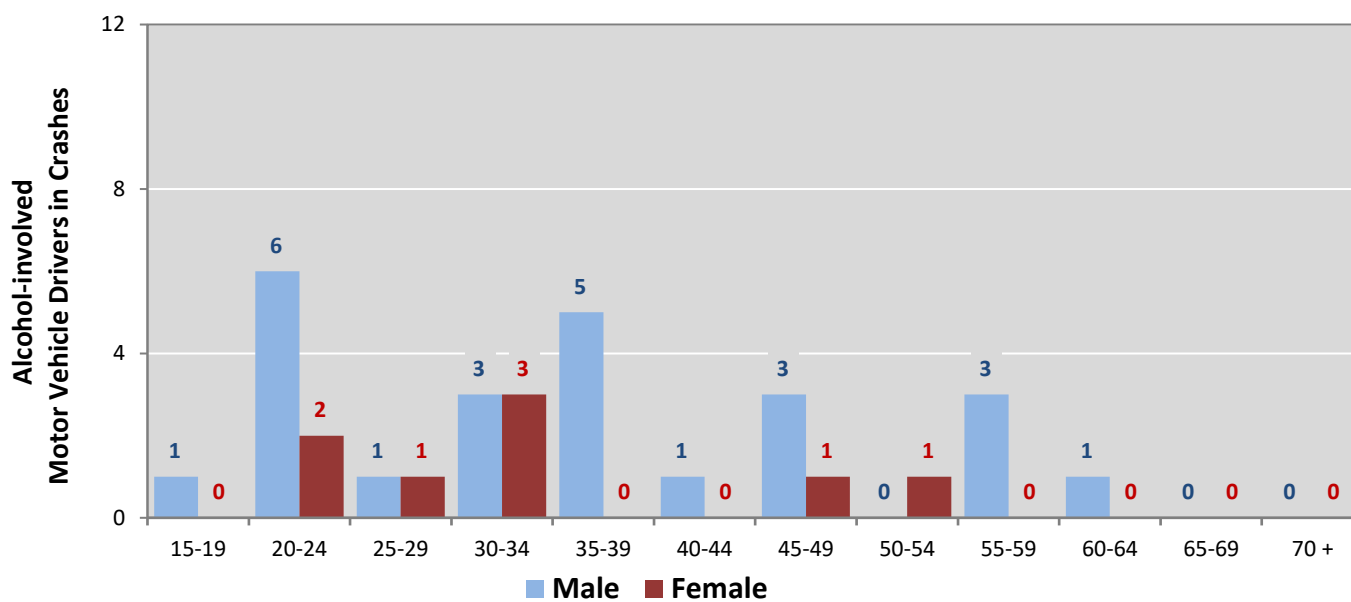
¹ See Page 17 for data on drivers of non-motorized vehicles in crashes (i.e. pedestrians and pedalcyclists).

Figure 6: Motor Vehicle Drivers in Crashes by Age Group and Sex in Roswell, 2017



* In 2017, Roswell had 319 drivers in crashes for which age or sex data were missing.

Figure 7: Alcohol-involved Motor Vehicle Drivers in Crashes by Age Group and Sex in Roswell, 2017



* In 2017, Roswell had 0 drivers in crashes for which age or sex data were missing.

Table 13: Alcohol-involved Motor Vehicle Drivers Under 21 (Ages 15-20) in Crashes in Roswell, 2013-2017

Age ¹	Year					5-Year Total
	2013	2014	2015	2016	2017	
15	0	0	0	1	0	1
16	0	0	0	0	0	0
17	1	1	1	0	0	3
18	0	1	0	1	1	3
19	0	3	0	0	0	3
20	1	3	1	2	2	9
Total Drivers	2	8	2	4	3	19

Table 14: Motor Vehicle Drivers Under 21 (Ages 15-20) in Crashes by Age, Sex and Alcohol-involvement in Roswell, 2017

Age ¹	Total Drivers				Alcohol-involved Drivers			
	Sex		Total Drivers	Percent of Total	Sex		Total Drivers	Percent of Total
	Male	Female			Male	Female		
15	4	6	10	4%	0	0	0	0%
16	20	26	46	17%	0	0	0	0%
17	33	14	47	17%	0	0	0	0%
18	43	28	71	26%	1	0	1	33%
19	21	23	44	16%	0	0	0	0%
20	31	20	51	19%	2	0	2	67%
Total Drivers	152	117	269	100%	3	0	3	100%

¹ For analysis of drivers under age 21, when the driver age or sex are not identified on the crash report (typically hit-and-run drivers), the driver data are considered unreliable and are excluded from the analysis.

**Table 15: Frequency of Contributing Factors in Crashes
by Crash Severity in Roswell, 2017**

Contributing Factors	Frequency of Contributing Factor ¹ by Crash Severity			
	Frequency in Fatal Crashes	Frequency in Injury Crashes	Frequency in Property Damage Only Crashes	Frequency in All Crashes
Human	15	584	1,219	1,818
Driver Inattention	3	198	442	643
Failed to Yield Right of Way	0	76	147	223
Other Improper Driving	1	55	127	183
Following Too Closely	0	63	101	164
Improper Backing	0	4	102	106
Speed Too Fast for Conditions	1	39	43	83
Made Improper Turn	0	18	61	79
Disregarded Traffic Signal	0	33	29	62
Passed Stop Sign	0	24	35	59
Excessive Speed	3	22	31	56
Alcohol Involved	2	15	18	35
Drove Left Of Center	1	12	19	32
Improper Lane Change	1	3	24	28
Improper Overtaking	0	5	17	22
Drug Involved	3	5	2	10
Avoid No Contact - Vehicle	0	2	6	8
Avoid No Contact - Other	0	2	5	7
Cell Phone	0	2	2	4
Driverless Moving Vehicle	0	1	2	3
Pedestrian Error	0	3	0	3
High Speed Pursuit	0	2	0	2
Texting	0	0	2	2
Vehicle Skidded Before Brake	0	0	2	2
Failed to Yield to Emergency Vehicle	0	0	1	1
Failed to Yield to Police Vehicle	0	0	1	1
Vehicle	0	9	13	22
Other Mechanical Defect	0	7	7	14
Inadequate Brakes	0	1	3	4
Defective Steering	0	1	2	3
Defective Tires	0	0	1	1
Environment	0	0	4	4
Road Defect	0	0	2	2
Low Visibility Due to Smoke	0	0	1	1
Traffic Control Not Functioning	0	0	1	1
Other	2	316	706	1,024
None	2	290	645	937
Other - No Driver Error	0	26	61	87

¹ Multiple contributing factors may be reported for any vehicle in a crash.

Table 16: People in Crashes by Crash Classification and Severity of Injuries in Roswell, 2017

Crash Classification	People in Crashes by Severity of Injuries					Total People
	Fatalities (Class K)	Suspected Serious Injuries (Class A)	Suspected Minor Injuries (Class B)	Possible Injuries (Class C)	No Apparent Injuries (Class O)	
Animal	0	0	0	0	14	14
Fixed Object	1	1	7	5	92	106
Other (Non-Collision)	0	1	0	2	35	38
Other (Object)	0	0	0	1	6	7
Other Vehicle	1	15	46	256	1,959	2,277
Overturn/Rollover	2	1	9	1	8	21
Parked Vehicle	0	2	8	9	292	311
Pedalcyclist	0	3	7	3	22	35
Pedestrian	0	1	2	4	11	18
Railroad Train	0	0	0	0	1	1
Rollover	0	0	2	1	1	4
Vehicle on Other Road	0	0	0	2	7	9
Missing Data	0	0	0	0	0	0
Total People	4	24	81	284	2,448	2,841

**Table 17: Killed or Injured Unbelted People in Crashes
by Sex and Age Group in Roswell, 2017**

Age Groups	Unbelted People Killed or Injured ^{1,2}				Total People
	Male	Percent of Male	Female	Percent of Female	
0-4	0	0%	0	0%	0
5-9	0	0%	2	40%	2
10-14	0	0%	0	0%	0
15-19	0	0%	0	0%	0
20-24	3	50%	2	40%	5
25-29	0	0%	0	0%	0
30-34	0	0%	1	20%	1
35-39	1	17%	0	0%	1
40-44	0	0%	0	0%	0
45-49	1	17%	0	0%	1
50-54	0	0%	0	0%	0
55-59	0	0%	0	0%	0
60-64	0	0%	0	0%	0
65-69	0	0%	0	0%	0
70 +	1	17%	0	0%	1
Missing Data	0	0%	0	0%	0
Total People	6	100%	5	100%	11

¹ People injured are in one of three categories: suspected serious injury, suspected minor injury, or possible injury.

² Excludes people in or on buses, heavy trucks, motorcycles, or ATVs.

**Figure 8: Seatbelt Use by People in Crashes with Fatal or
Suspected Serious Injuries in Roswell, 2013-2017**

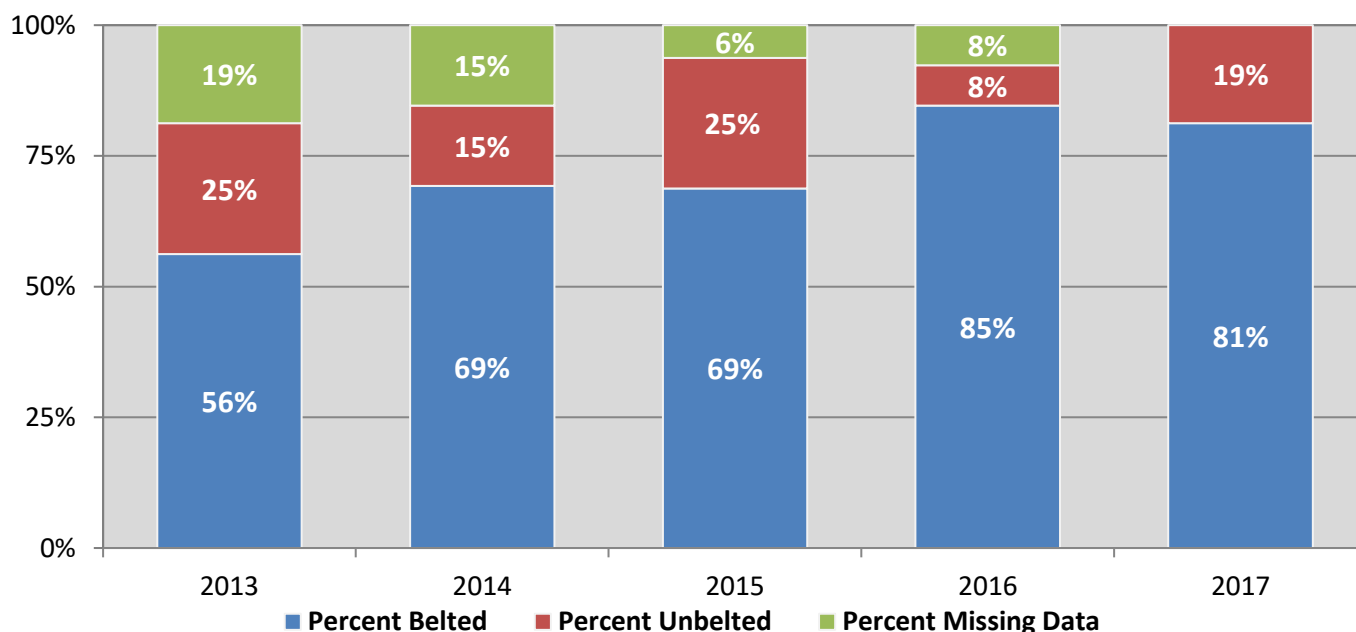
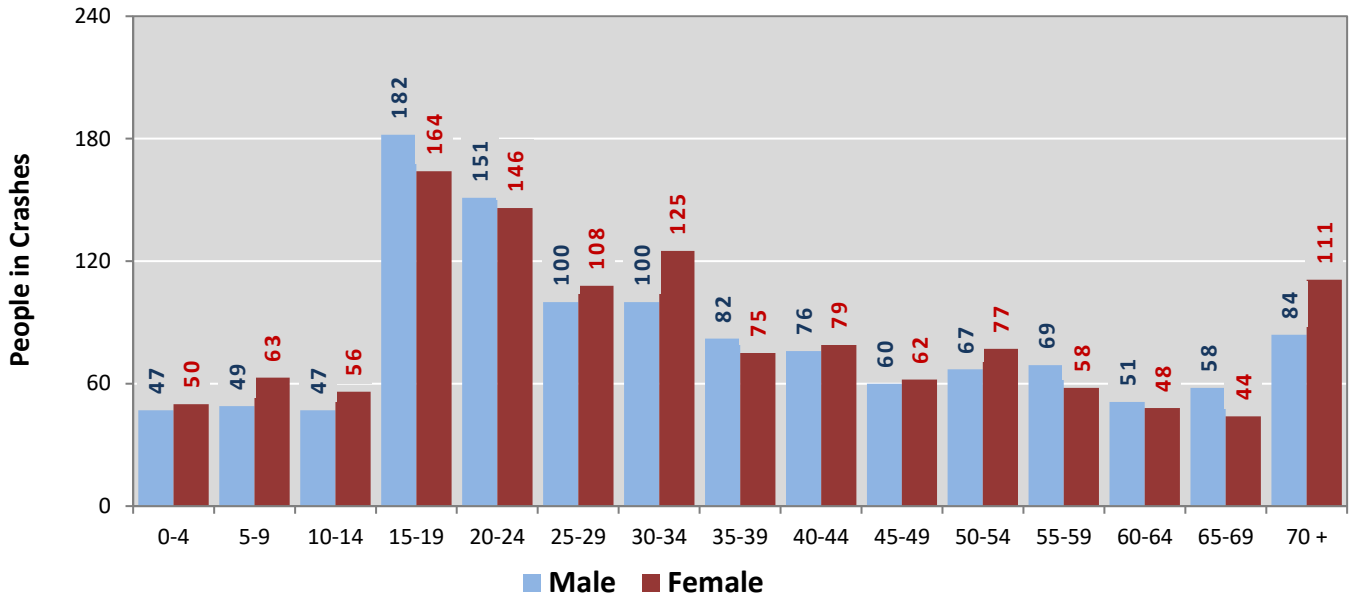
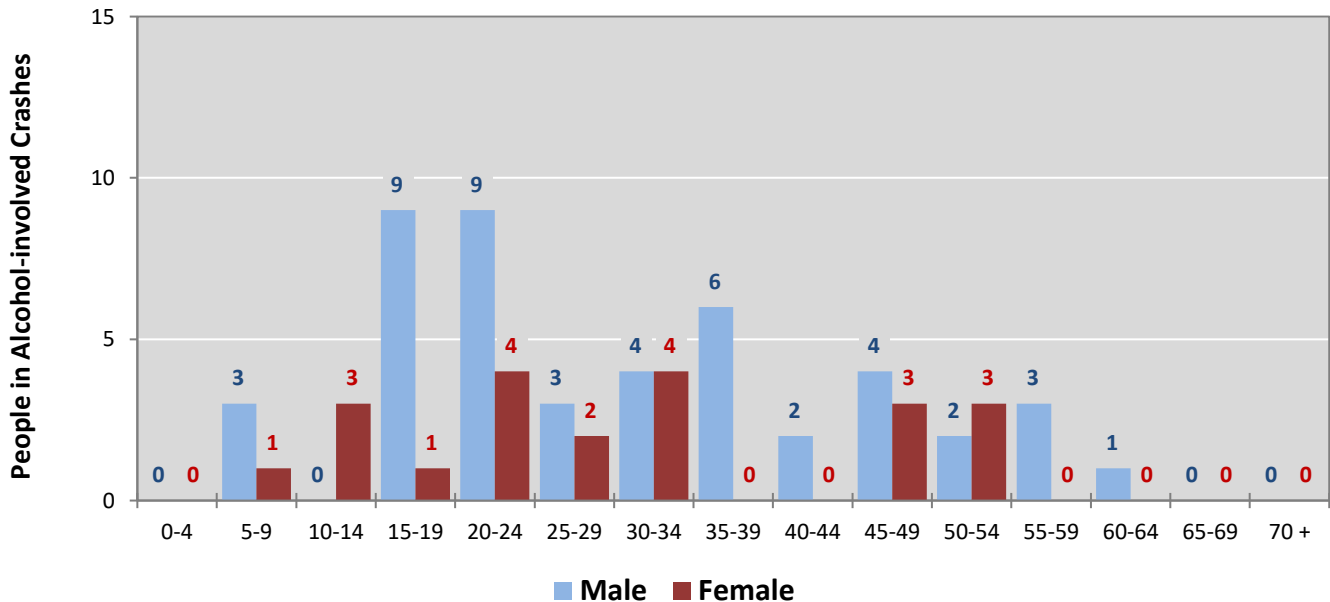


Figure 9: People in Crashes by Age Group and Sex in Roswell, 2017



* In 2017, Roswell had 352 people in crashes for which age or sex data were missing.

Figure 10: People in Alcohol-involved Crashes by Age Group and Sex in Roswell, 2017



* In 2017, Roswell had 10 people in alcohol-involved crashes for which age or sex data were missing.

**Table 18: Pedestrians and Pedalcyclists in Crashes
by Age Group in Roswell, 2013-2017**

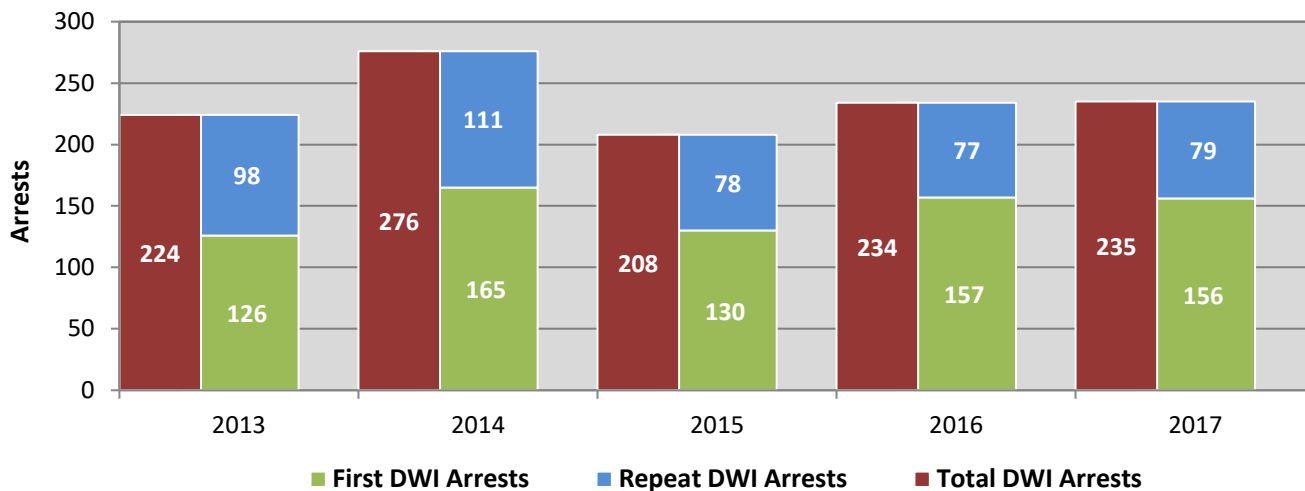
Age Groups	Pedestrians and Pedalcyclists ¹ in Crashes					5-Year Total People
	2013	2014	2015	2016	2017	
0-4	0	1	1	0	1	3
5-9	1	1	3	1	1	7
10-14	1	1	5	3	0	10
15-19	2	3	5	2	2	14
20-24	2	0	1	2	0	5
25-29	2	2	2	1	3	10
30-34	0	3	2	2	4	11
35-39	0	2	1	0	1	4
40-44	1	1	2	1	0	5
45-49	0	0	2	2	5	9
50-54	1	1	3	0	1	6
55-59	3	0	1	1	2	7
60-64	0	0	0	3	0	3
65-69	1	0	2	1	0	4
70 +	0	0	2	0	0	2
Missing Data	2	2	1	3	1	9
Total People	16	17	33	22	21	109

**Table 19: Pedestrians and Pedalcyclists in Crashes by Alcohol Involvement
and Severity of Injuries in Roswell, 2017**

Alcohol Involvement	Pedestrians and Pedalcyclists ¹ in Crashes					Total People
	Fatalities (Class K)	Suspected Serious Injuries (Class A)	Suspected Minor Injuries (Class B)	Possible Injuries (Class C)	No Apparent Injury (Class O)	
Total Pedalcyclists	0	3	6	3	3	15
Involved	0	1	0	1	1	3
Not Involved	0	2	6	2	2	12
Total Pedestrians	0	1	2	3	0	6
Involved	0	0	0	0	0	0
Not Involved	0	1	2	3	0	6
Total People	0	4	8	6	3	21

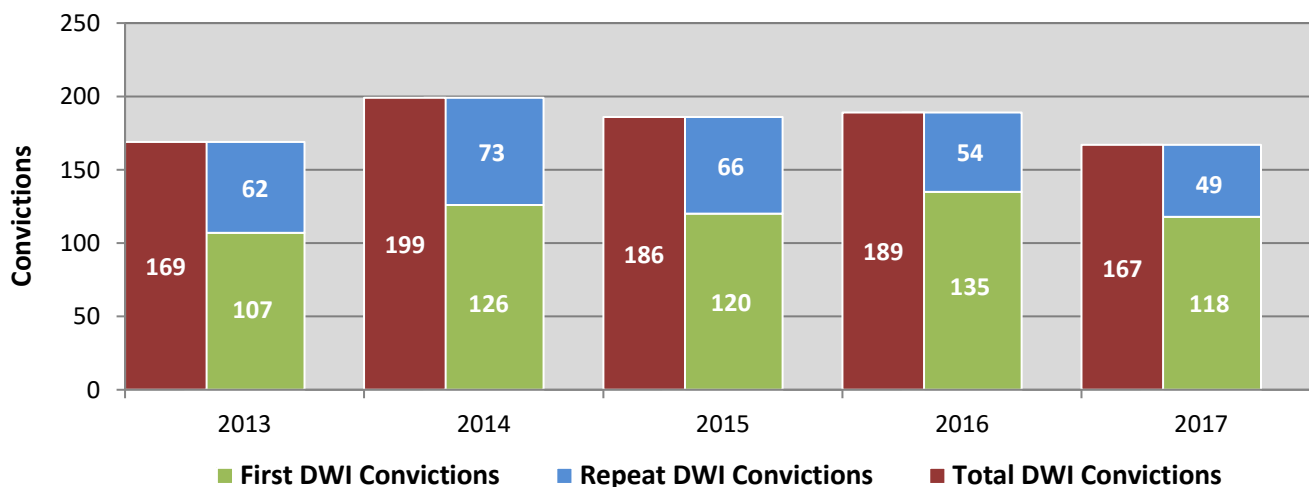
¹ Pedestrians and pedalcyclists are counted as non-motorized vehicles, when involved in a crash with a motor vehicle.

Figure 11: DWI Arrests of Roswell Residents Throughout the State, Showing First and Repeat DWI Arrests, 2013-2017



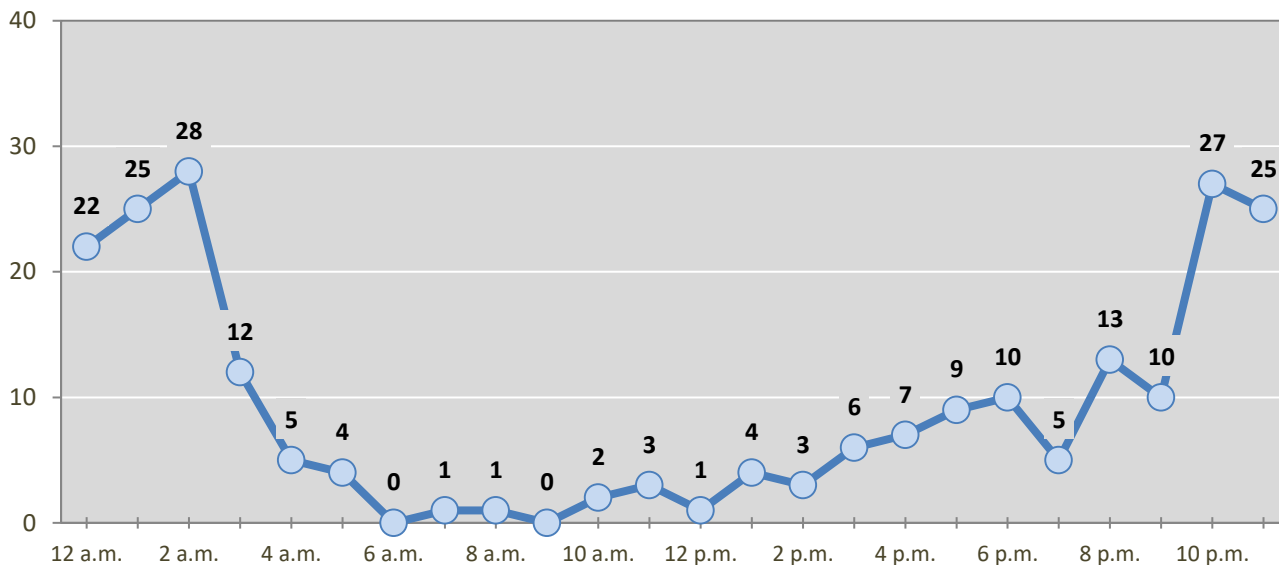
*Values are based upon the year of the arrest.

Figure 12: DWI Convictions of Roswell Residents Throughout the State, Showing First and Repeat DWI Convictions, 2013-2017



*Values are based upon the year of the conviction.

Figure 13: DWI Arrests by Hour of Roswell Residents Throughout the State, 2017



* In 2017, Roswell had 12 arrests for which hour data were missing.

Table 20: DWI Arrests by Day of Week of Roswell Residents Throughout the State, 2013-2017

Day of Week	Year					5-Year Average
	2013	2014	2015	2016	2017	
Sunday	43	71	53	51	46	53
Monday	12	16	25	19	25	19
Tuesday	25	18	13	18	14	18
Wednesday	17	28	17	23	23	22
Thursday	23	26	26	27	28	26
Friday	41	50	29	40	43	41
Saturday	63	67	45	56	56	57
Total Arrests	224	276	208	234	235	235

**Table 21: Driver First DWI Arrests by Age Group
of Roswell Residents Throughout the State, 2013-2017**

Age Groups	Driver First DWI Arrests ¹				
	2013	2014	2015	2016	2017
15-19	2	15	11	19	9
20-24	47	33	26	31	30
25-29	25	24	27	28	34
30-34	14	23	16	31	18
35-39	11	22	15	16	24
40-44	6	12	8	5	16
45-49	7	13	8	5	6
50-54	7	11	11	11	9
55-59	4	4	3	4	6
60-64	2	5	2	3	1
65-69	1	1	2	4	2
70 +	0	2	1	0	1
Missing Data	0	0	0	0	0
Total Drivers	126	165	130	157	156

¹Values are based upon the year of the arrest.

**Table 22: Driver Repeat DWI Arrests by Age Group
of Roswell Residents Throughout the State, 2013-2017**

Age Groups	Driver Repeat DWI Arrests ¹				
	2013	2014	2015	2016	2017
15-19	0	1	1	0	0
20-24	14	12	6	5	7
25-29	14	11	11	21	7
30-34	15	22	15	13	17
35-39	9	11	9	11	12
40-44	11	14	10	8	8
45-49	9	15	4	5	10
50-54	14	10	5	4	2
55-59	3	10	6	7	9
60-64	5	4	8	2	3
65-69	3	1	2	0	2
70 +	1	0	1	1	2
Missing Data	0	0	0	0	0
Total Drivers	98	111	78	77	79

¹Values are based upon the year of the arrest.

Table 23: Driver First DWI Convictions by Age Group of Roswell Residents Throughout the State, 2013-2017

Age Groups	Driver First DWI Convictions ¹				
	2013	2014	2015	2016	2017
15-19	3	4	8	13	6
20-24	37	34	28	29	26
25-29	22	25	27	21	25
30-34	12	13	18	23	20
35-39	9	12	13	9	19
40-44	4	10	7	11	6
45-49	6	10	8	7	3
50-54	6	10	5	12	6
55-59	4	3	3	4	3
60-64	2	1	3	4	1
65-69	2	3	0	1	3
70 +	0	1	0	1	0
Missing Data	0	0	0	0	0
Total Drivers	107	126	120	135	118

¹Values are based upon the year of the conviction.

Table 24: Driver Repeat DWI Convictions by Age Group of Roswell Residents Throughout the State, 2013-2017

Age Groups	Driver Repeat DWI Convictions ¹				
	2013	2014	2015	2016	2017
15-19	1	0	1	0	0
20-24	9	10	5	5	3
25-29	7	6	8	16	8
30-34	6	15	14	4	10
35-39	7	8	4	9	9
40-44	6	8	8	6	3
45-49	8	10	9	2	6
50-54	8	8	6	3	2
55-59	3	5	5	4	3
60-64	4	2	5	3	2
65-69	2	1	1	1	1
70 +	1	0	0	1	2
Missing Data	0	0	0	0	0
Total Drivers	62	73	66	54	49

¹Values are based upon the year of the conviction.

**Table 25: Court Disposition of DWI Arrests for the State
and of Roswell Residents Throughout the State, 2017**

Court Disposition of DWI Arrest ¹	Roswell	Statewide	Percent of Statewide
Total DWI Arrests	235	10,501	2.2%
DWI Arrests Resulting in Convictions	163	5,533	2.9%
DWI Arrests Resulting in Dismissals ²	16	1,426	1.1%
DWI Arrests Awaiting Disposition	56	3,542	1.6%

¹ These are the number of DWI arrests in 2017 and whether the case resulted in a conviction or dismissal, or is still awaiting court disposition, as reported in the NM MVD Citation Tracking System (CTS) as of February 2019.

² For this table, a very small number of "not guilty" rulings may be included in the category Dismissals.

**Table 26: Average Number of Days from Date of DWI Arrest to Date of Court Disposition
for the State and of Roswell Residents Throughout the State, 2017**

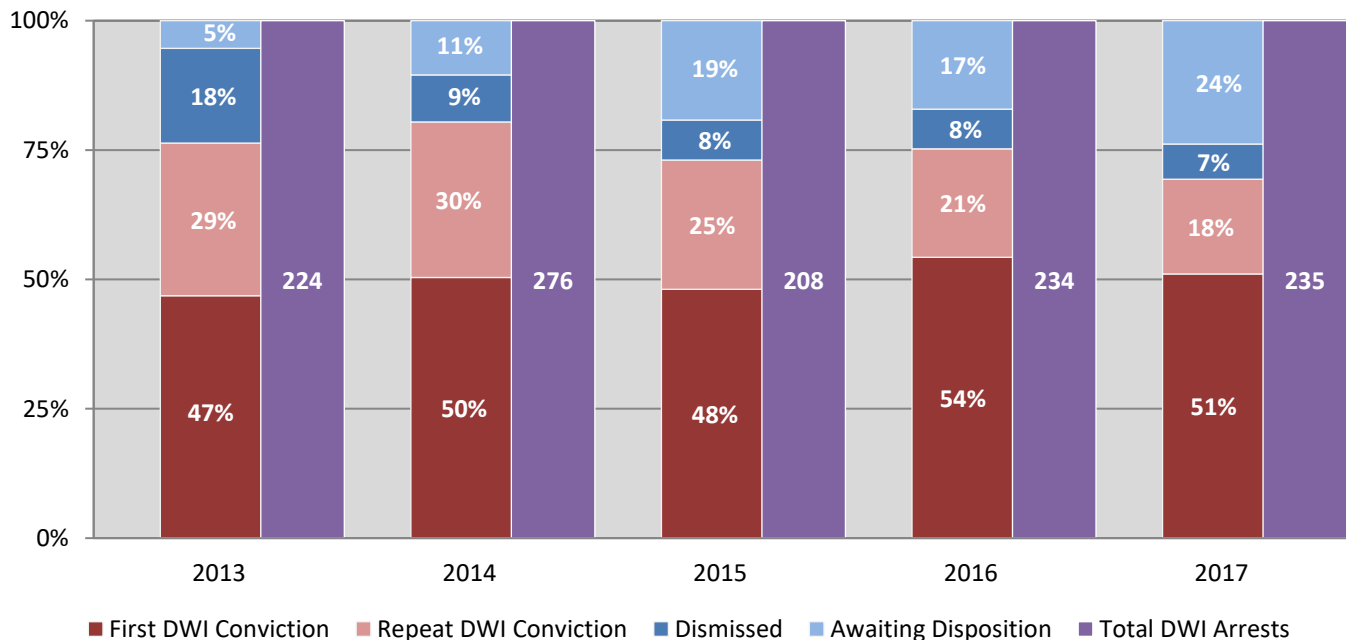
Court Disposition	Average Number of Days		Deviation from Statewide Average
	Roswell	Statewide	
DWI Conviction	145	166	-21
DWI Dismissal	193	175	18

**Table 27: Court Disposition of DWI Arrests
of Roswell Residents Throughout the State, 2013-2017**

Year of DWI Arrest ¹	Court Disposition				Total DWI Arrests
	First DWI Conviction	Repeat DWI Conviction	Dismissed	Awaiting Disposition	
2013	105	66	41	12	224
2014	139	83	25	29	276
2015	100	52	16	40	208
2016	127	49	18	40	234
2017	120	43	16	56	235

¹ Values are based upon the year of the arrest.

**Figure 14: Court Dispositions by Percentage of DWI Arrests
of Roswell Residents Throughout the State, 2013-2017**



*Table 27 contains the values used to calculate percentages shown in Figure 14.