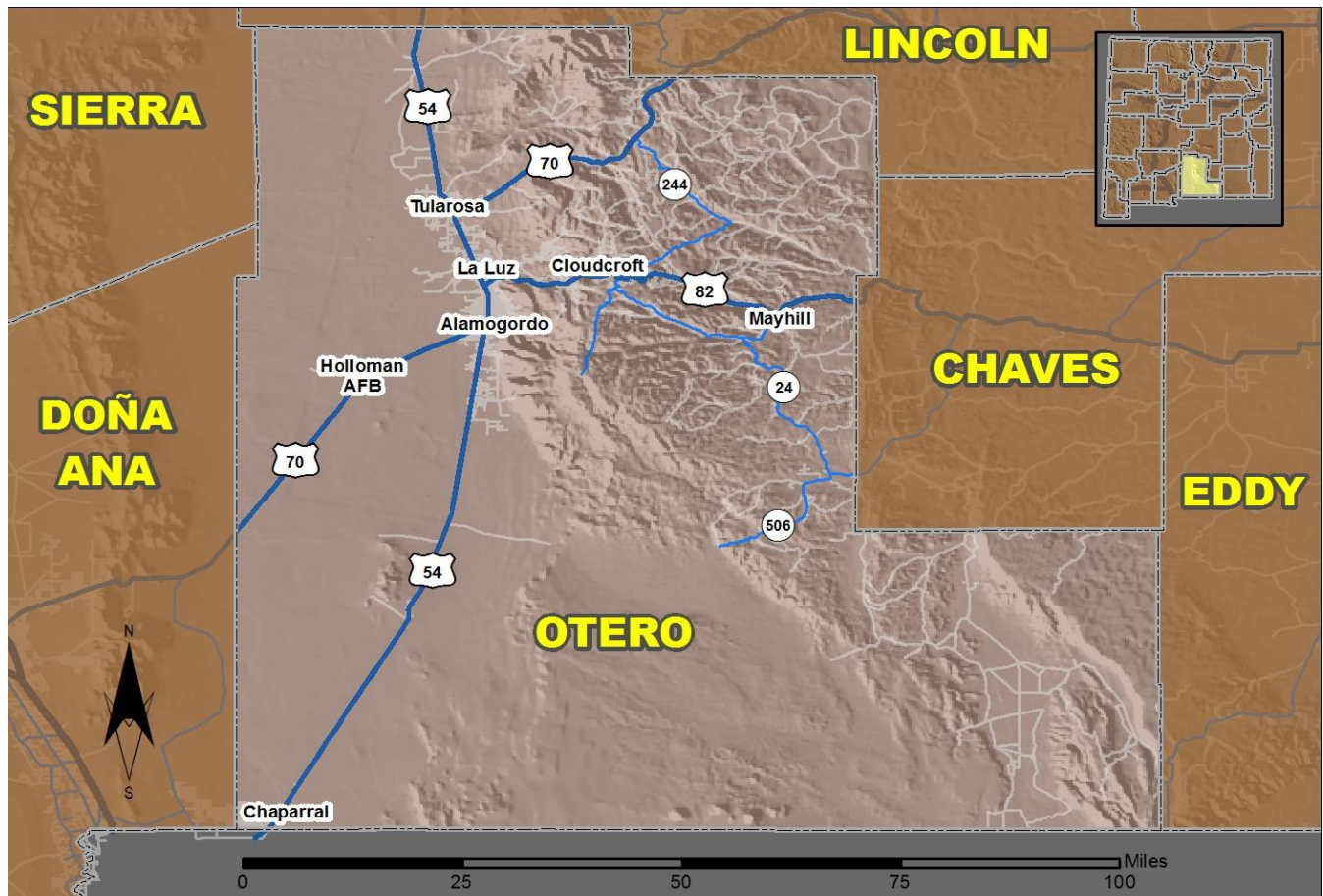


2017 Community Report

Otero County



Produced for the New Mexico Department of Transportation,
Traffic Safety Division, Traffic Records Bureau,
Under Contract 6093 by the University of New Mexico,
Geospatial and Population Studies, Traffic Research Unit

Distributed in compliance with New Mexico Statute 66-7-214
as a reference source regarding New Mexico traffic crashes

For the purposes of this report, data are compiled by the University of New Mexico, Geospatial and Population Studies, Traffic Research Unit (TRU), on behalf of the New Mexico Department of Transportation (NMDOT). Data in this report may differ from that in other data sources, such as the Federal Fatality Analysis Reporting System (FARS), due to the timing of publications and rules for how data are compiled and maintained in Federal vs. State databases. If you have questions regarding this report, please contact the Traffic Safety Division at 505-827-0427.

<http://tru.unm.edu/Crash-Reports/Community-Reports/>

Definitions

Aggravated DWI – A driver arrested for 1) driving with a BAC of 0.16 or higher, 2) driving under the influence of alcohol or drugs and causing bodily injury to a human being as a result, or 3) driving under the influence of alcohol or drugs and refusing to submit to a BAC test at the time of arrest for DWI.

Alcohol-involved Crash – A crash for which the Uniform Crash Report indicated that 1) a DWI citation was issued, 2) alcohol was a contributing factor, or 3) a person in control of a vehicle (including a pedestrian or pedalcyclist) was suspected of being under the influence of alcohol.

Alcohol-involved Driver – A person in control of a vehicle who was cited for DWI or indicated on the Uniform Crash Report as being either suspected or determined by testing to be under the influence of alcohol. There can be multiple alcohol-involved drivers in a single alcohol-involved crash.

Crash – A reported incident on a public roadway involving one or more motor vehicles that resulted in death, personal injury, or at least \$500 in property damage. Crashes on private property (such as a parking lot) are not included.

DWI Arrest (Citation) – In this report, a DWI arrest (a.k.a. a DWI citation) is a driver arrested for either DWI or aggravated DWI. New Mexico’s legal limit for presumption of driving while intoxicated (DWI) is 0.08 for non-commercial drivers older than 21 years of age, 0.04 for commercial vehicle drivers, and 0.02 for drivers younger than 21 years of age.

DWI Conviction – A driver convicted of driving under the intoxicating influence of alcohol, narcotics, or pathogenic drugs, including aggravated DWI.

Fatal Crash – A crash in which at least one person was killed. More than one person can be killed in a single fatal crash.

Fatalities – The number of people killed in a crash. The terms “killed” and “deaths” are synonymous with “fatalities.” A fatality is crash-related if it occurs at the time of the crash or if the person(s) involved in the crash dies within 30 days.

Injury Crash – A reported crash in which at least one person was injured. Injury crashes involve at least one suspected serious injury (Class A), suspected minor injury (Class B), or possible injury (Class C). Fatal crashes are not included.

Missing Data – An indication that the applicable field on the UCR form was left blank or contained an invalid code. Starting with crashes that occurred in 2012, improvements in the identification of missing data in the NMDOT crash database led to an increase in the reported amount of missing data.

Pedalcyclist – A person riding a mechanism of transport that is powered solely by pedals (a.k.a. bicyclist).

Pedestrian – A person on foot, walking, running, jogging, hiking, sitting or lying down who is involved in a motor vehicle traffic crash.

Sources

Crash Data – New Mexico Department of Transportation, Traffic Safety Division, Traffic Records Bureau, Traffic Crash Database, as of the report date below. Crash data are compiled using NMDOT Uniform Crash Reports (UCR), submitted by law enforcement agencies in the state, for any incident on a public roadway involving one or more motor vehicles that resulted in death, injury, or at least \$500 in property damage. These reports are processed by the NMDOT Traffic Records Bureau and analyzed by the University of New Mexico, Geospatial and Population Studies, Traffic Research Unit (TRU).

DWI Citation Tracking System (CTS) – New Mexico Taxation and Revenue Department (NM TRD), Motor Vehicle Division (MVD), DWI Citation Tracking System (CTS), as of February 2019. Repeat offenders are identified by the combination of account key, arrest date, and citation number. County data are based upon the county where the arrest took place. City data are based upon the city where the offender resides.

Urban Areas – New Mexico Department of Transportation, Asset Management and Planning, 2010 U.S. Census Urbanized Area Boundaries, NMDOT-Adjusted, and U.S. Census Urban Clusters, August 21, 2013. In crashes before 2013, “urban” was defined as a town or city with a population of at least 2,500 people.

Table 1: Total Crashes and Alcohol-involved Crashes by Crash Severity in Otero County, 2008-2017

Year	Total Crashes				Alcohol-involved Crashes			
	Fatal	Injury	Property Damage Only	Total	Fatal	Injury	Property Damage Only	Total
2008	9	328	720	1,057	3	24	27	54
2009	8	357	739	1,104	3	21	31	55
2010	12	364	725	1,101	7	25	22	54
2011	12	341	812	1,165	7	24	38	69
2012	14	319	722	1,055	6	29	31	66
2013	7	307	658	972	2	24	26	52
2014	11	232	633	876	7	13	24	44
2015	10	283	688	981	2	26	20	48
2016	3	294	652	949	1	20	26	47
2017	6	329	660	995	4	16	22	42

Figure 1: Alcohol-involved Fatal and Injury Crashes Compared with Non-alcohol-involved Fatal and Injury Crashes in Otero County, 2008-2017

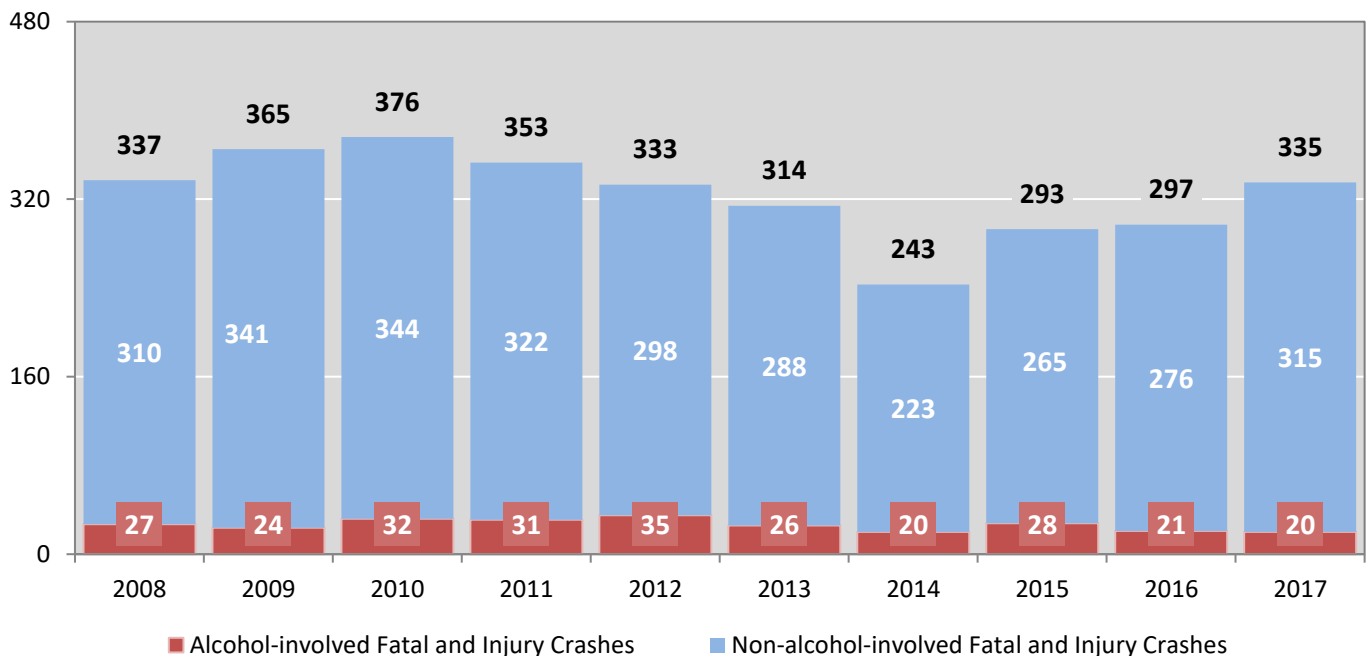


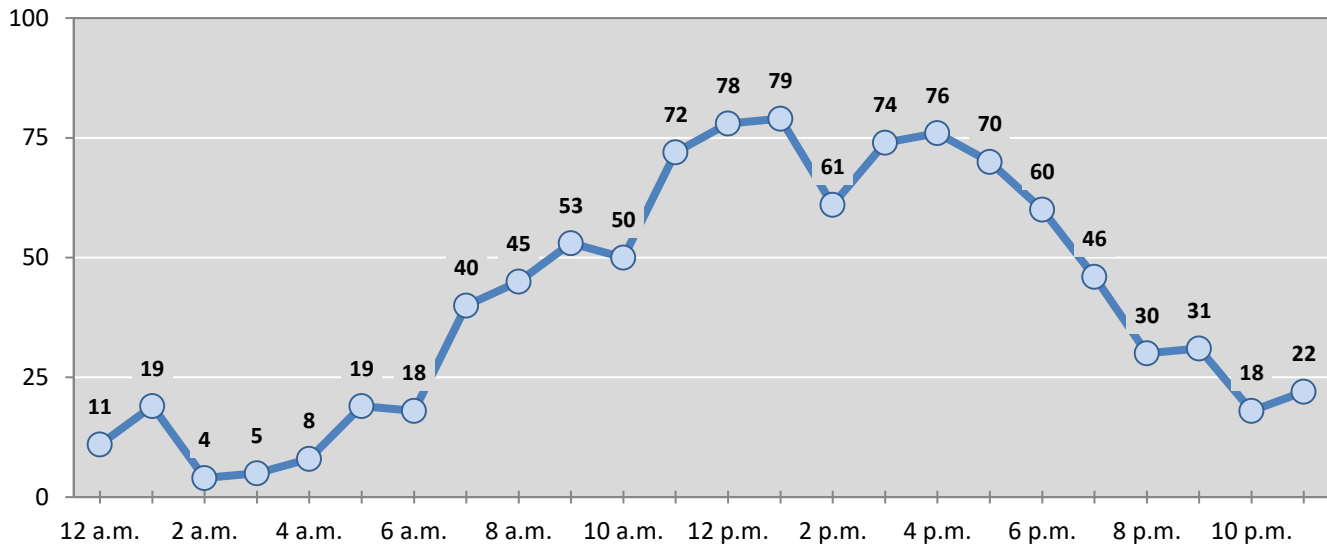
Table 2: Crashes by Month in Otero County, 2013-2017

Month	Crashes					5-Year Average
	2013	2014	2015	2016	2017	
January	75	65	86	81	56	73
February	79	69	79	78	67	74
March	92	81	72	93	85	85
April	84	89	68	88	81	82
May	88	87	83	71	104	87
June	91	81	95	81	87	87
July	71	66	83	86	95	80
August	76	71	78	63	77	73
September	72	79	92	76	77	79
October	89	62	89	70	91	80
November	76	41	73	78	90	72
December	79	85	83	84	85	83
Total Crashes	972	876	981	949	995	955

Table 3: Alcohol-involved Crashes by Month in Otero County, 2013-2017

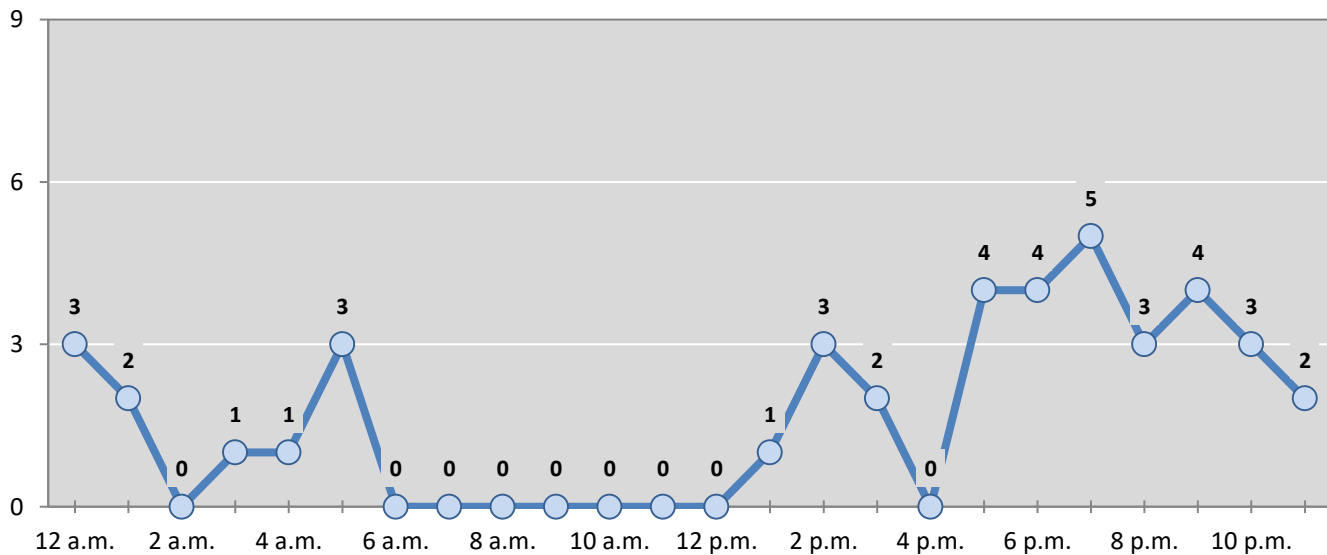
Month	Alcohol-involved Crashes					5-Year Average
	2013	2014	2015	2016	2017	
January	4	5	0	7	1	3
February	3	3	3	4	4	3
March	6	4	4	1	4	4
April	5	3	2	4	3	3
May	4	5	6	4	9	6
June	4	5	7	7	3	5
July	4	3	4	4	3	4
August	3	2	9	2	4	4
September	4	3	3	3	2	3
October	2	2	2	2	4	2
November	6	4	4	5	3	4
December	7	5	4	4	2	4
Total Crashes	52	44	48	47	42	47

Figure 2: Crashes by Hour in Otero County, 2017



* In 2017, Otero County had 6 crashes for which hour data were missing.

Figure 3: Alcohol-involved Crashes by Hour in Otero County, 2017



* In 2017, Otero County had 1 alcohol-involved crashes for which hour data were missing.

Table 4: Alcohol-involved Crashes by Day of Week in Otero County, 2013-2017

Day of Week	Alcohol-involved Crashes					5-Year Average
	2013	2014	2015	2016	2017	
Sunday	8	9	7	11	6	8
Monday	5	7	5	8	3	6
Tuesday	6	3	2	2	8	4
Wednesday	4	5	5	3	9	5
Thursday	8	3	9	8	2	6
Friday	6	6	8	5	6	6
Saturday	15	11	12	10	8	11
Total Crashes	52	44	48	47	42	47

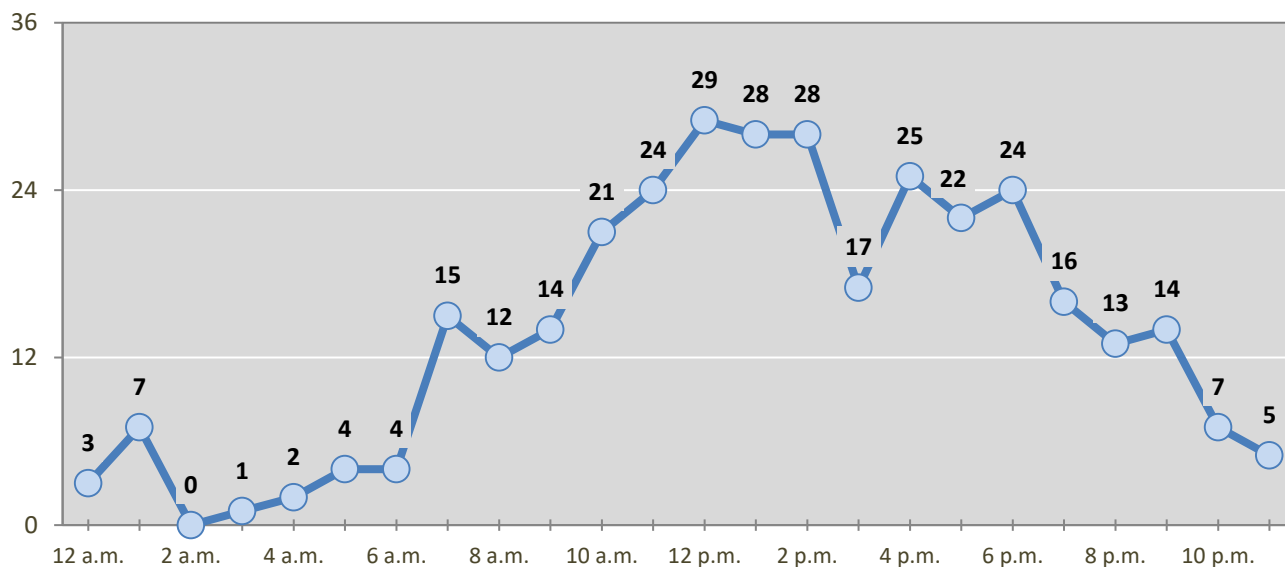
Table 5: Fatal and Injury Crashes by Day of Week in Otero County, 2013-2017

Day of Week	Fatal and Injury Crashes					5-Year Average
	2013	2014	2015	2016	2017	
Sunday	34	28	32	28	29	30
Monday	50	33	38	56	55	46
Tuesday	38	38	39	40	47	40
Wednesday	41	36	51	50	49	45
Thursday	39	31	49	35	40	39
Friday	60	40	47	49	61	51
Saturday	52	37	37	39	54	44
Total Crashes	314	243	293	297	335	296

Table 6: Pedestrian and Pedalcyclist Crashes by Day of Week in Otero County, 2013-2017

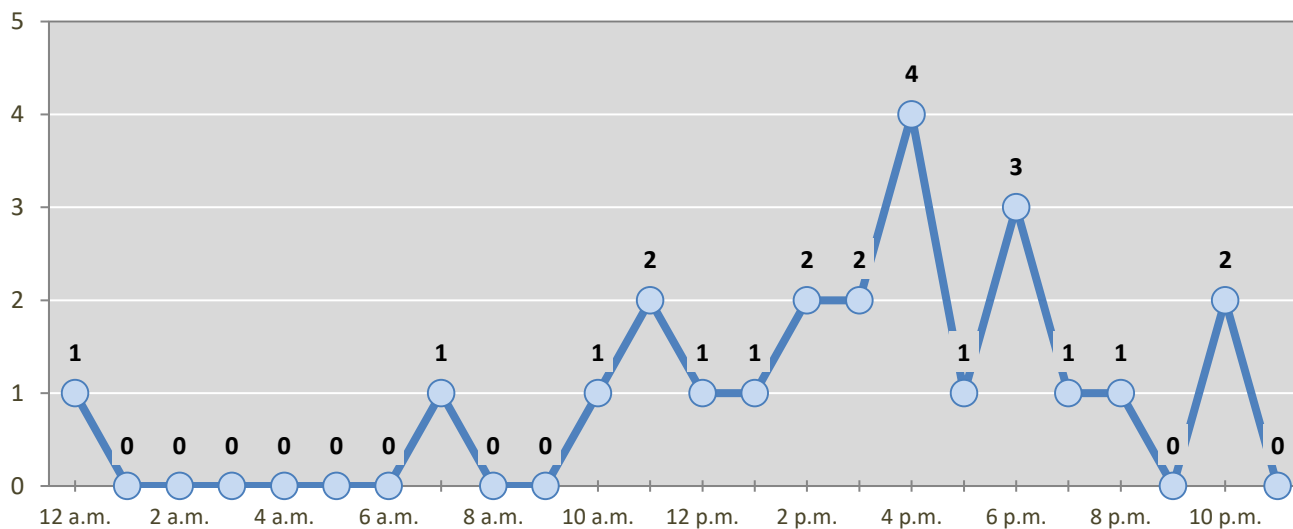
Day of Week	Pedestrian and Pedalcyclist Crashes					5-Year Average
	2013	2014	2015	2016	2017	
Sunday	0	3	1	0	0	1
Monday	1	3	2	7	6	4
Tuesday	2	2	6	1	4	3
Wednesday	2	4	4	2	2	3
Thursday	7	1	1	3	5	3
Friday	1	2	3	3	3	2
Saturday	2	2	1	3	3	2
Total Crashes	15	17	18	19	23	18

Figure 4: Fatal and Injury Crashes by Hour in Otero County, 2017



* In 2017, Otero County had 0 crashes for which hour data were missing.

Figure 5: Pedestrian and Pedalcyclist Crashes by Hour in Otero County, 2017



* In 2017, Otero County had 0 crashes for which hour data were missing.

Table 7: Severity of Injuries to People in Crashes by Rural and Urban Location in Otero County, 2017

Urban and Rural Locations by Alcohol-involvement	People in Crashes by Severity of Injuries					Total People
	Fatalities (Class K)	Suspected Serious Injuries (Class A)	Suspected Minor Injuries (Class B)	Possible Injuries (Class C)	No Apparent Injuries (Class O)	
People in Alcohol-involved Crashes	4	2	13	5	58	82
Urban	1	1	5	4	44	55
Rural Non-Interstate	3	1	8	1	14	27
Rural Interstate	0	0	0	0	0	0
People in Crashes	6	25	127	330	1,944	2,432
Urban	2	7	71	228	1,481	1,789
Rural Non-Interstate	4	18	56	102	463	643
Rural Interstate	0	0	0	0	0	0
Percent in Alcohol-involved Crashes	67%	8%	10%	2%	3%	3%

Table 8: Total Crashes by Roadway System and Crash Severity in Otero County, 2013-2017

Crash Severity by System	Crashes by Year					5-Year Average
	2013	2014	2015	2016	2017	
Total Rural Interstate	0	1	0	0	0	0
Fatal Crash	0	0	0	0	0	0
Injury Crash	0	0	0	0	0	0
Property Damage Only Crash	0	1	0	0	0	0
Total Rural Non-Interstate	230	275	311	286	320	284
Fatal Crash	5	8	6	3	4	5
Injury Crash	89	75	95	79	113	90
Property Damage Only Crash	136	192	210	204	203	189
Total Urban	742	600	670	663	675	670
Fatal Crash	2	3	4	0	2	2
Injury Crash	218	157	188	215	216	199
Property Damage Only Crash	522	440	478	448	457	469

Table 9: Total Crashes by Crash Classification in Otero County, 2013-2017

Crash Classification	Total Crashes by Year					5-Year Average
	2013	2014	2015	2016	2017	
Animal	61	73	69	90	72	73
Fixed Object	134	110	128	109	107	118
Other (Non-Collision)	23	20	25	19	23	22
Other (Object)	26	23	25	21	30	25
Other Vehicle	555	461	580	530	598	545
Overturn/Rollover	56	50	15	57	47	45
Parked Vehicle	81	98	69	86	75	82
Pedalcyclist	7	8	9	7	10	8
Pedestrian	8	9	9	13	13	10
Railroad Train	3	1	0	0	0	1
Rollover	0	2	42	11	14	14
Vehicle on Other Road	6	9	8	5	6	7
Missing Data	12	12	2	1	0	5
Total Crashes	972	876	981	949	995	955

Table 10: Vehicles in Crashes by Vehicle Type in Otero County, 2013-2017

Vehicle Type ¹	Vehicles in Crashes by Vehicle Type					5-Year Average
	2013	2014	2015	2016	2017	
Bus	4	3	1	6	4	4
Motorcycle	56	46	43	48	45	48
Passenger	786	698	778	804	830	779
Pedalcyclist	7	8	9	7	10	8
Pedestrian	8	9	9	12	13	10
Pickup	379	334	398	322	376	362
Semi	30	42	29	40	52	39
Van/SUV/4WD	294	291	347	327	362	324
Other Vehicle	29	10	20	10	4	15
Missing Data	88	84	73	60	56	72
Total Vehicles	1,681	1,525	1,707	1,636	1,752	1,660

¹ Pedestrians and pedalcyclists are counted as non-motorized vehicles, when involved in a crash with a motor vehicle. See Page 17 for data on drivers of non-motorized vehicles in crashes (i.e. pedestrians and pedalcyclists).

Table 11: Motor Vehicle Drivers in Crashes by Vehicle Type and Age Group in Otero County, 2017

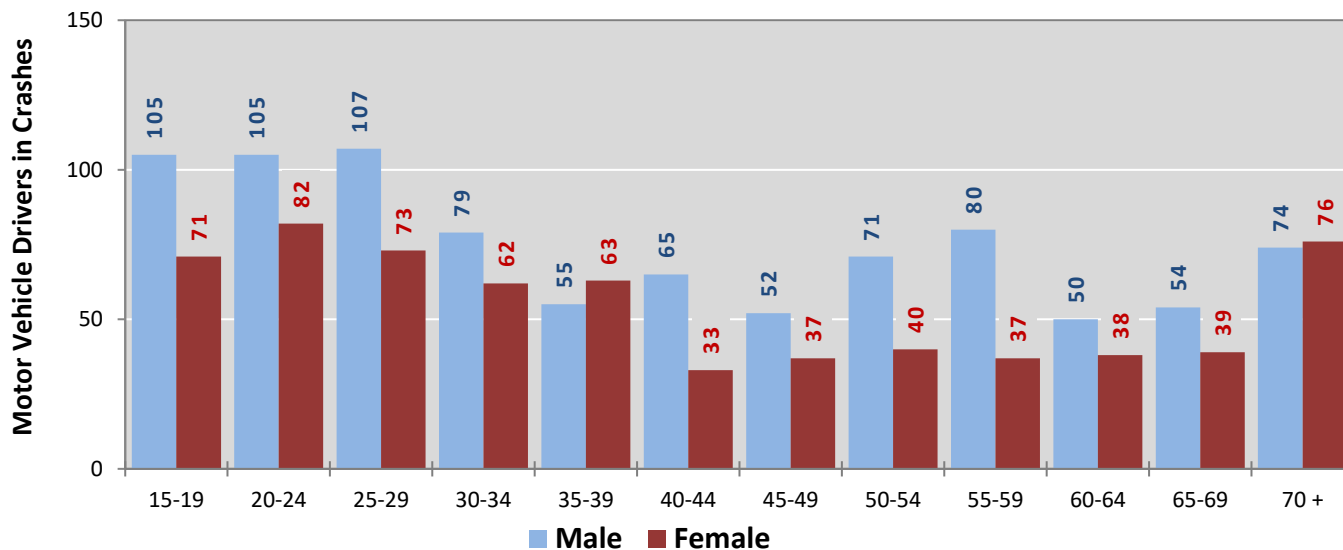
Age Groups	Motor Vehicle ¹ Drivers by Vehicle Type and Age Group								Total Drivers
	Bus	Motor-cycle	Passenger	Pickup	Semi	Van 4WD SUV	Other Vehicle	Missing Data	
15-19	0	7	105	27	0	37	0	0	176
20-24	0	4	123	33	0	26	0	1	187
25-29	1	6	93	32	4	43	0	1	180
30-34	1	5	61	28	8	38	0	0	141
35-39	0	2	56	19	4	36	0	1	118
40-44	0	2	33	34	7	22	0	0	98
45-49	1	1	45	20	3	19	0	0	89
50-54	0	2	53	35	4	17	1	0	112
55-59	0	5	40	30	10	30	1	1	117
60-64	0	3	34	22	6	23	0	0	88
65-69	0	2	38	30	2	18	2	2	94
70 +	1	3	80	26	0	40	0	0	150
Missing Data	0	3	69	40	4	13	0	50	179
Total Drivers	4	45	830	376	52	362	4	56	1,729

Table 12: Alcohol-involved Motor Vehicle Drivers in Crashes by Vehicle Type and Age Group in Otero County, 2017

Age Groups	Alcohol-involved Motor Vehicle ¹ Drivers by Vehicle Type and Age Group								Total Drivers
	Bus	Motor-cycle	Passenger	Pickup	Semi	Van 4WD SUV	Other Vehicle	Missing Data	
15-19	0	0	0	0	0	1	0	0	1
20-24	0	0	6	1	0	0	0	0	7
25-29	0	1	4	3	0	3	0	0	11
30-34	0	2	4	2	0	0	0	0	8
35-39	0	1	2	0	0	0	0	0	3
40-44	0	0	1	0	0	1	0	0	2
45-49	0	0	0	0	0	0	0	0	0
50-54	0	1	1	1	0	0	0	0	3
55-59	0	1	0	0	0	1	0	0	2
60-64	0	1	0	0	0	0	0	0	1
65-69	0	0	0	1	0	0	0	0	1
70 +	0	0	0	0	0	0	0	0	0
Missing Data	0	0	0	0	0	0	0	0	0
Total Drivers	0	7	18	8	0	6	0	0	39

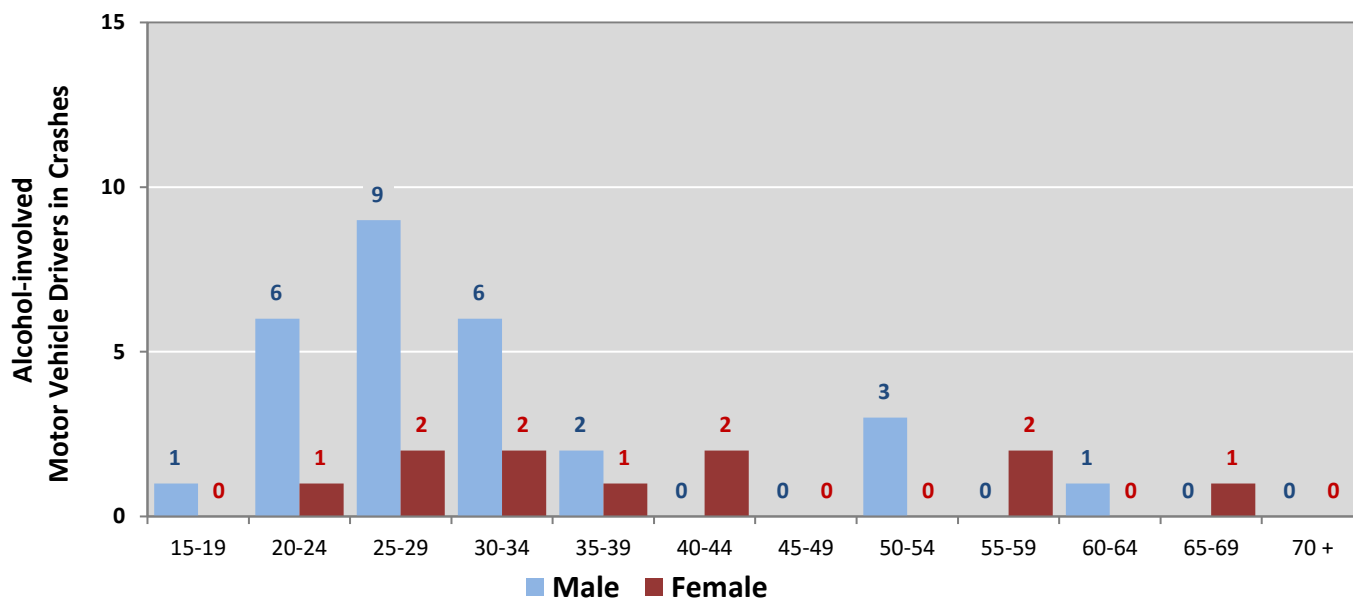
¹ See Page 17 for data on drivers of non-motorized vehicles in crashes (i.e. pedestrians and pedalcyclists).

Figure 6: Motor Vehicle Drivers in Crashes by Age Group and Sex in Otero County, 2017



* In 2017, Otero County had 181 drivers in crashes for which age or sex data were missing.

Figure 7: Alcohol-involved Motor Vehicle Drivers in Crashes by Age Group and Sex in Otero County, 2017



* In 2017, Otero County had 0 drivers in crashes for which age or sex data were missing.

Table 13: Alcohol-involved Motor Vehicle Drivers Under 21 (Ages 15-20) in Crashes in Otero County, 2013-2017

Age ¹	Year					5-Year Total
	2013	2014	2015	2016	2017	
15	0	0	0	0	0	0
16	0	0	0	2	0	2
17	0	1	2	1	0	4
18	2	1	2	0	0	5
19	2	1	1	0	1	5
20	1	0	2	1	2	6
Total Drivers	5	3	7	4	3	22

Table 14: Motor Vehicle Drivers Under 21 (Ages 15-20) in Crashes by Age, Sex and Alcohol-involvement in Otero County, 2017

Age ¹	Total Drivers				Alcohol-involved Drivers			
	Sex		Total Drivers	Percent of Total	Sex		Total Drivers	Percent of Total
	Male	Female			Male	Female		
15	10	4	14	6%	0	0	0	0%
16	19	19	38	18%	0	0	0	0%
17	20	13	33	15%	0	0	0	0%
18	25	18	43	20%	0	0	0	0%
19	31	17	48	22%	1	0	1	33%
20	27	13	40	19%	2	0	2	67%
Total Drivers	132	84	216	100%	3	0	3	100%

¹ For analysis of drivers under age 21, when the driver age or sex are not identified on the crash report (typically hit-and-run drivers), the driver data are considered unreliable and are excluded from the analysis.

**Table 15: Frequency of Contributing Factors in Crashes
by Crash Severity in Otero County, 2017**

Contributing Factors	Frequency of Contributing Factor ¹ by Crash Severity			
	Frequency in Fatal Crashes	Frequency in Injury Crashes	Frequency in Property Damage Only Crashes	Frequency in All Crashes
Human	15	596	1,078	1,689
Driver Inattention	3	226	415	644
Failed to Yield Right of Way	1	84	112	197
Following Too Closely	0	34	82	116
Other Improper Driving	0	43	69	112
Made Improper Turn	0	34	60	94
Excessive Speed	2	30	45	77
Avoid No Contact - Vehicle	0	21	52	73
Passed Stop Sign	0	23	29	52
Improper Backing	0	4	45	49
Disregarded Traffic Signal	0	23	22	45
Alcohol Involved	4	16	22	42
Speed Too Fast for Conditions	0	15	22	37
Drove Left Of Center	1	10	21	32
Avoid No Contact - Other	2	3	23	28
Improper Lane Change	0	6	18	24
Improper Overtaking	0	4	19	23
Cell Phone	0	3	7	10
Vehicle Skidded Before Brake	0	4	6	10
High Speed Pursuit	0	2	5	7
Drug Involved	1	4	2	7
Pedestrian Error	1	3	1	5
Failed to Yield to Police Vehicle	0	2	0	2
Texting	0	1	1	2
Failed to Yield to Emergency Vehicle	0	1	0	1
Driverless Moving Vehicle	0	0	0	0
Vehicle	1	12	11	24
Other Mechanical Defect	1	6	4	11
Inadequate Brakes	0	3	5	8
Defective Tires	0	2	1	3
Defective Steering	0	1	1	2
Environment	0	4	0	4
Traffic Control Not Functioning	0	3	0	3
Road Defect	0	1	0	1
Low Visibility Due to Smoke	0	0	0	0
Other	0	251	509	760
None	0	222	437	659
Other - No Driver Error	0	29	72	101

¹ Multiple contributing factors may be reported for any vehicle in a crash.

Table 16: People in Crashes by Crash Classification and Severity of Injuries in Otero County, 2017

Crash Classification	People in Crashes by Severity of Injuries					Total People
	Fatalities (Class K)	Suspected Serious Injuries (Class A)	Suspected Minor Injuries (Class B)	Possible Injuries (Class C)	No Apparent Injuries (Class O)	
Animal	0	0	3	5	92	100
Fixed Object	2	2	10	17	113	144
Other (Non-Collision)	0	1	6	3	24	34
Other (Object)	0	1	3	4	33	41
Other Vehicle	1	8	69	261	1,448	1,787
Overturn/Rollover	0	8	20	18	31	77
Parked Vehicle	0	0	1	5	154	160
Pedalcyclist	0	0	8	1	12	21
Pedestrian	2	3	3	5	18	31
Railroad Train	0	0	0	0	0	0
Rollover	1	2	4	7	7	21
Vehicle on Other Road	0	0	0	4	12	16
Missing Data	0	0	0	0	0	0
Total People	6	25	127	330	1,944	2,432

Table 17: Killed or Injured Unbelted People in Crashes by Sex and Age Group in Otero County, 2017

Age Groups	Unbelted People Killed or Injured ^{1,2}				Total People
	Male	Percent of Male	Female	Percent of Female	
0-4	0	0%	0	0%	0
5-9	0	0%	0	0%	0
10-14	1	9%	1	20%	2
15-19	3	27%	1	20%	4
20-24	2	18%	0	0%	2
25-29	2	18%	0	0%	2
30-34	1	9%	1	20%	2
35-39	0	0%	1	20%	1
40-44	0	0%	0	0%	0
45-49	0	0%	1	20%	1
50-54	1	9%	0	0%	1
55-59	0	0%	0	0%	0
60-64	1	9%	0	0%	1
65-69	0	0%	0	0%	0
70 +	0	0%	0	0%	0
Missing Data	0	0%	0	0%	0
Total People	11	100%	5	100%	16

¹ People injured are in one of three categories: suspected serious injury, suspected minor injury, or possible injury.

² Excludes people in or on buses, heavy trucks, motorcycles, or ATVs.

Figure 8: Seatbelt Use by People in Crashes with Fatal or Suspected Serious Injuries in Otero County, 2013-2017

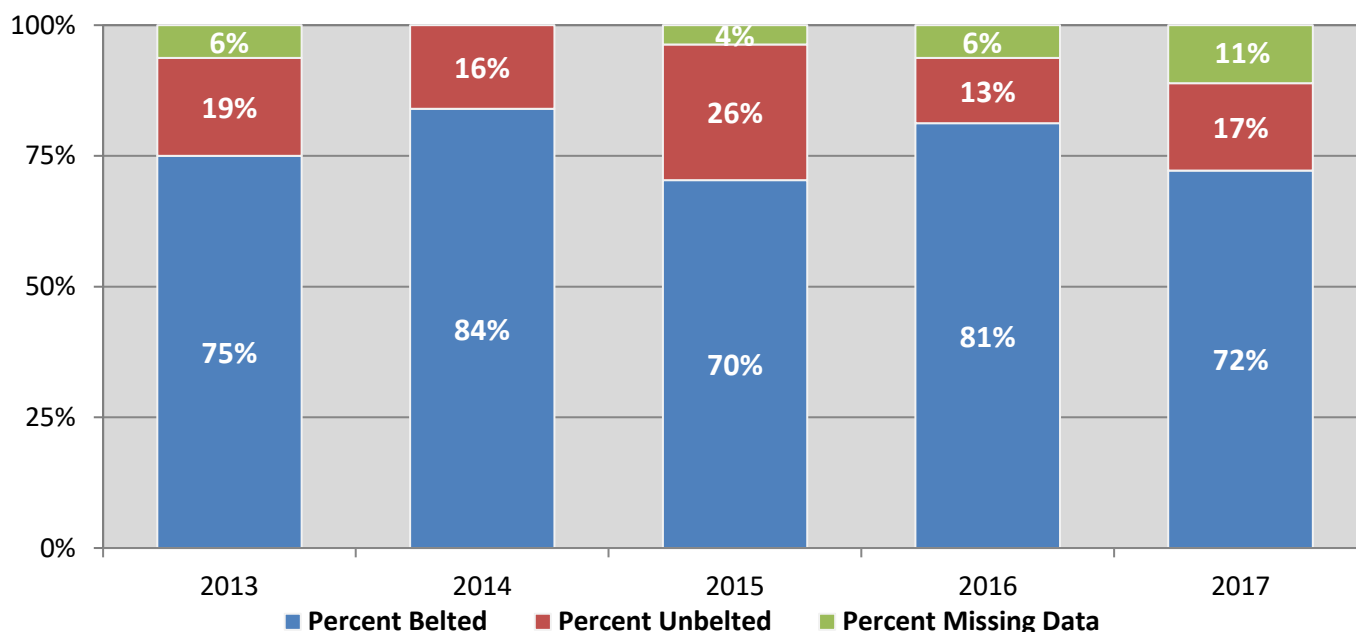
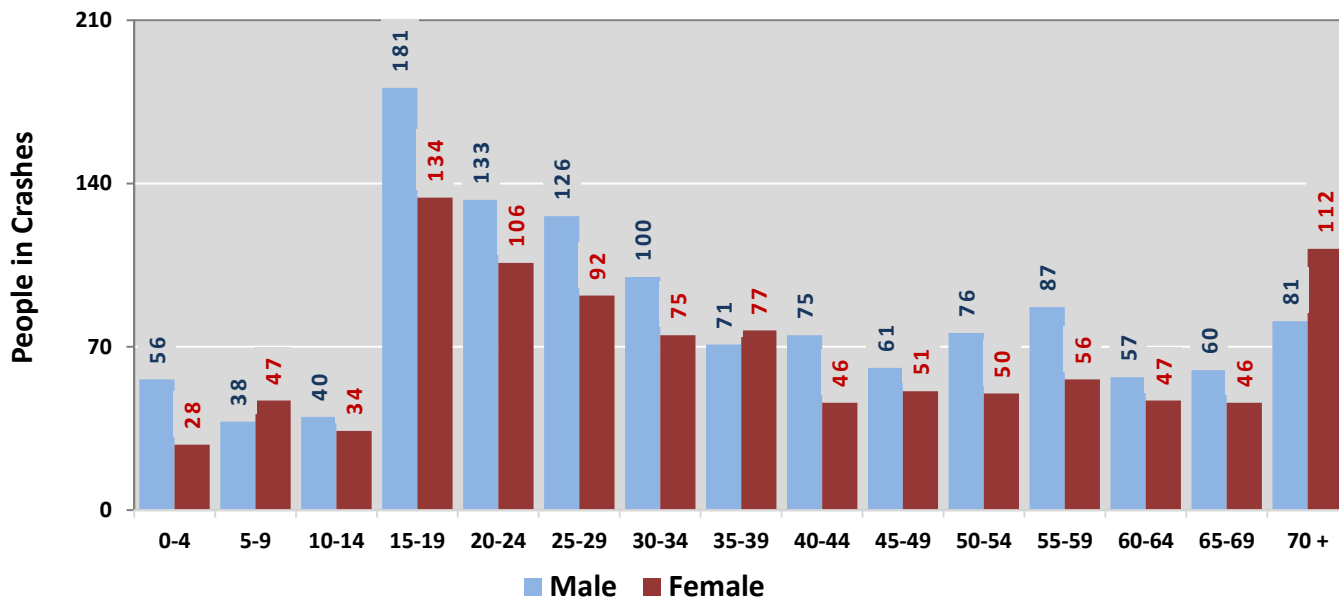
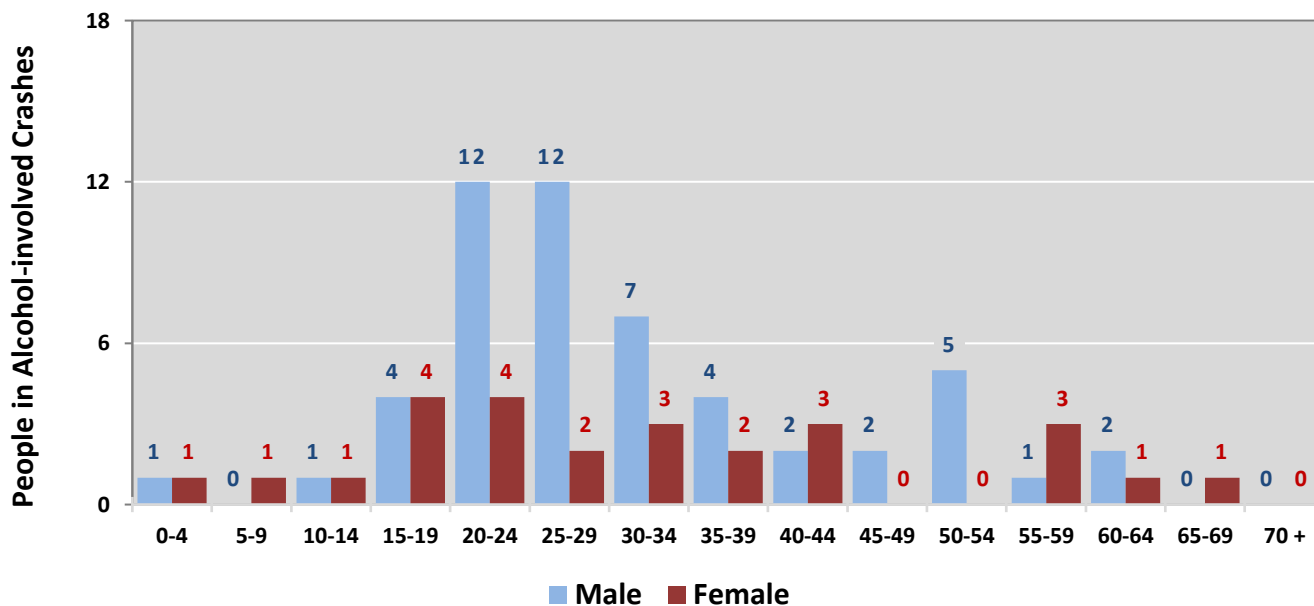


Figure 9: People in Crashes by Age Group and Sex in Otero County, 2017



* In 2017, Otero County had 189 people in crashes for which age or sex data were missing.

Figure 10: People in Alcohol-involved Crashes by Age Group and Sex in Otero County, 2017



* In 2017, Otero County had 3 people in alcohol-involved crashes for which age or sex data were missing.

Table 18: Pedestrians and Pedalcyclists in Crashes by Age Group in Otero County, 2013-2017

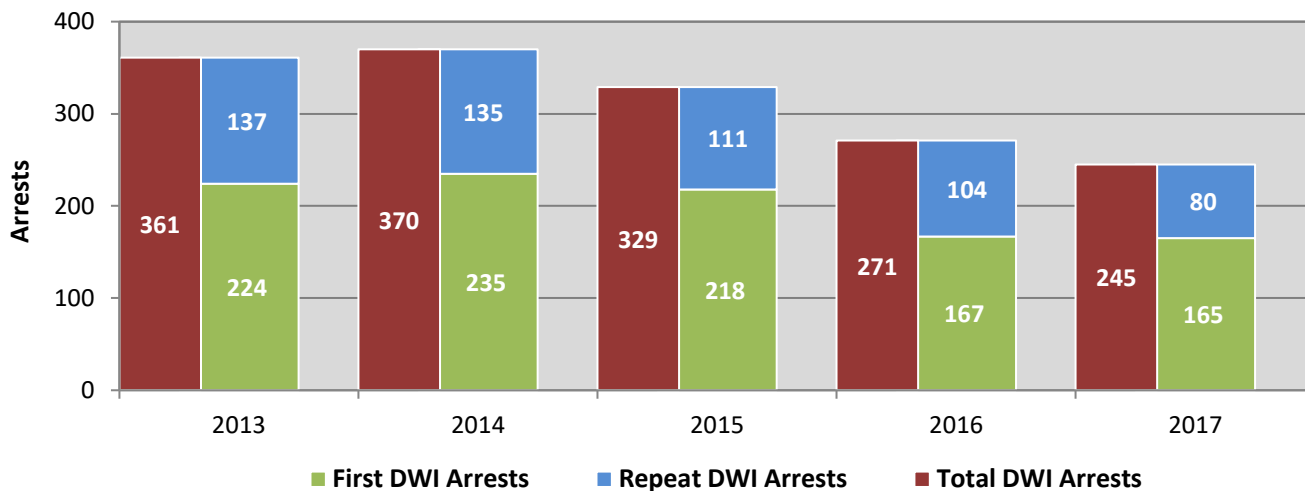
Age Groups	Pedestrians and Pedalcyclists ¹ in Crashes					5-Year Total People
	2013	2014	2015	2016	2017	
0-4	0	0	0	0	0	0
5-9	1	0	1	0	1	3
10-14	0	1	1	2	2	6
15-19	3	4	2	4	4	17
20-24	2	0	3	0	1	6
25-29	0	1	3	0	1	5
30-34	2	2	0	1	2	7
35-39	0	3	0	2	4	9
40-44	0	1	2	1	2	6
45-49	2	0	0	3	2	7
50-54	0	1	1	3	1	6
55-59	2	1	0	0	0	3
60-64	0	1	2	0	1	4
65-69	0	0	0	1	1	2
70 +	0	0	1	0	0	1
Missing Data	3	2	2	2	1	10
Total People	15	17	18	19	23	92

Table 19: Pedestrians and Pedalcyclists in Crashes by Alcohol Involvement and Severity of Injuries in Otero County, 2017

Alcohol Involvement	Pedestrians and Pedalcyclists ¹ in Crashes					Total People
	Fatalities (Class K)	Suspected Serious Injuries (Class A)	Suspected Minor Injuries (Class B)	Possible Injuries (Class C)	No Apparent Injury (Class O)	
Total Pedalcyclists	0	0	8	1	1	10
Involved	0	0	0	0	1	1
Not Involved	0	0	8	1	0	9
Total Pedestrians	2	3	3	5	0	13
Involved	1	0	1	0	0	2
Not Involved	1	3	2	5	0	11
Total People	2	3	11	6	1	23

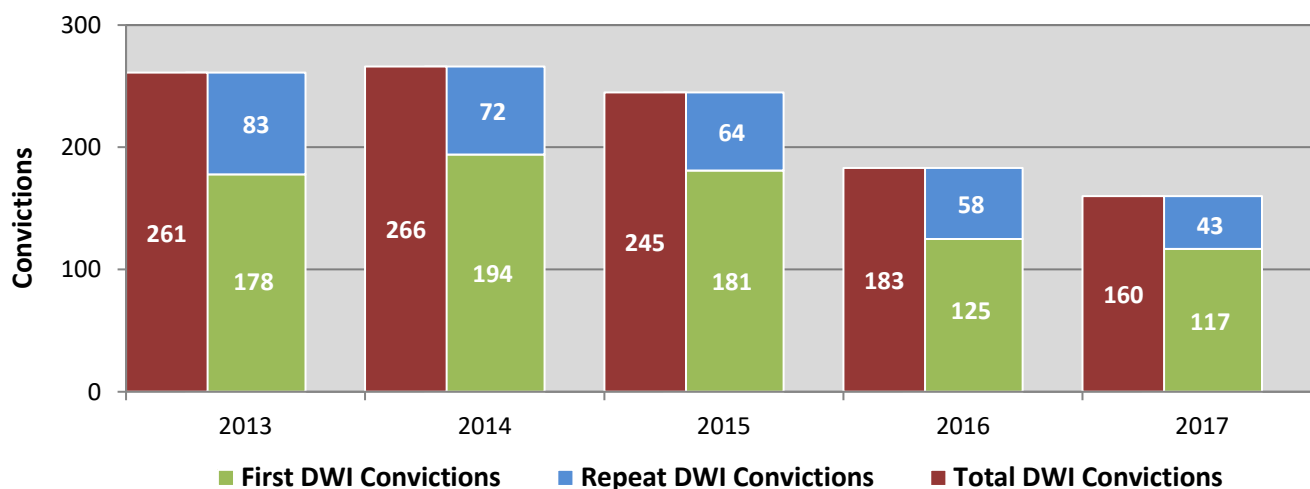
¹ Pedestrians and pedalcyclists are counted as non-motorized vehicles, when involved in a crash with a motor vehicle.

**Figure 11: DWI Arrests in Otero County,
Showing First and Repeat DWI Arrests, 2013-2017**



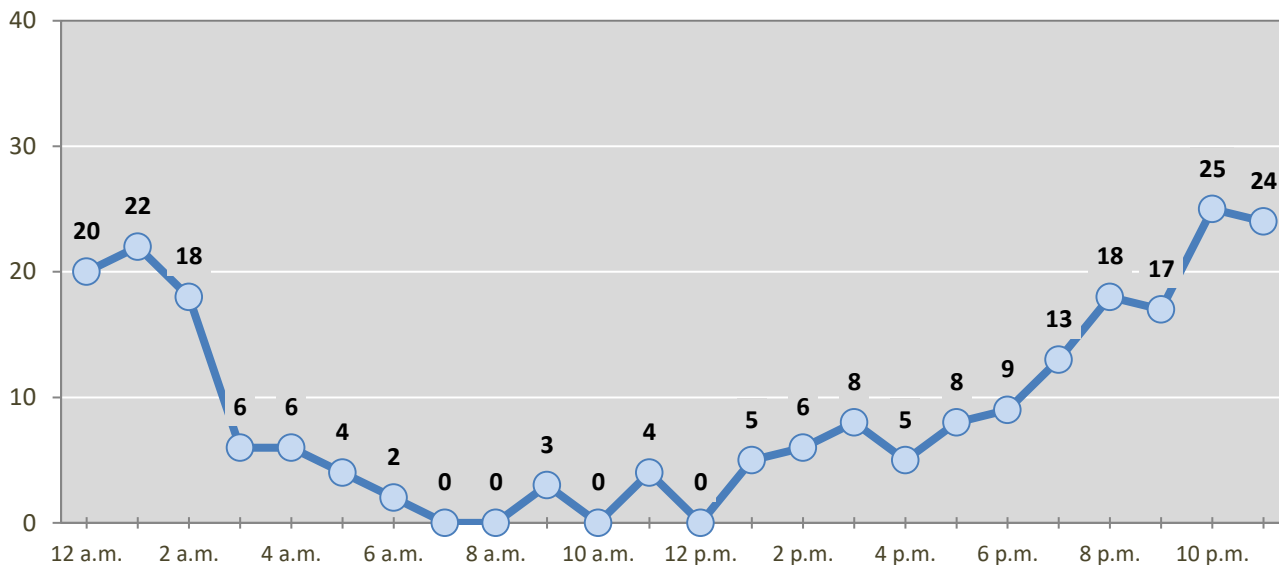
*Values are based upon the year of the arrest.

**Figure 12: DWI Convictions in Otero County,
Showing First and Repeat DWI Convictions, 2013-2017**



*Values are based upon the year of the conviction.

Figure 13: DWI Arrests by Hour in Otero County, 2017



* In 2017, Otero County had 22 arrests for which hour data were missing.

Table 20: DWI Arrests by Day of Week in Otero County, 2013-2017

Day of Week	Year					5-Year Average
	2013	2014	2015	2016	2017	
Sunday	76	84	69	49	54	66
Monday	31	44	29	29	22	31
Tuesday	42	32	22	21	26	29
Wednesday	34	35	40	25	19	31
Thursday	34	37	46	31	34	36
Friday	52	51	52	46	39	48
Saturday	92	87	71	70	51	74
Total Arrests	361	370	329	271	245	315

Table 21: Driver First DWI Arrests by Age Group in Otero County, 2013-2017

Age Groups	Driver First DWI Arrests ¹				
	2013	2014	2015	2016	2017
15-19	17	13	18	8	6
20-24	58	65	40	39	32
25-29	45	42	58	40	42
30-34	34	27	27	16	22
35-39	10	18	12	17	18
40-44	12	14	14	7	15
45-49	8	24	10	9	7
50-54	15	15	13	11	5
55-59	9	9	13	9	7
60-64	4	2	8	4	6
65-69	8	2	3	6	4
70 +	4	4	2	1	1
Missing Data	0	0	0	0	0
Total Drivers	224	235	218	167	165

¹ Values are based upon the year of the arrest.

Table 22: Driver Repeat DWI Arrests by Age Group in Otero County, 2013-2017

Age Groups	Driver Repeat DWI Arrests ¹				
	2013	2014	2015	2016	2017
15-19	2	2	0	0	1
20-24	14	10	5	6	2
25-29	12	10	18	18	24
30-34	18	20	17	13	10
35-39	15	18	12	17	9
40-44	20	19	18	11	9
45-49	18	21	11	11	6
50-54	18	18	11	8	7
55-59	11	8	5	12	5
60-64	6	4	8	4	2
65-69	2	4	5	2	4
70 +	1	1	1	2	1
Missing Data	0	0	0	0	0
Total Drivers	137	135	111	104	80

¹ Values are based upon the year of the arrest.

Table 23: Driver First DWI Convictions by Age Group in Otero County, 2013-2017

Age Groups	Driver First DWI Convictions ¹				
	2013	2014	2015	2016	2017
15-19	14	11	9	4	7
20-24	39	57	39	31	17
25-29	35	34	37	30	33
30-34	28	21	25	16	14
35-39	14	9	15	11	18
40-44	15	12	15	4	8
45-49	8	16	9	8	4
50-54	10	14	11	4	7
55-59	5	9	12	9	4
60-64	2	5	3	5	3
65-69	4	4	3	3	2
70 +	4	2	3	0	0
Missing Data	0	0	0	0	0
Total Drivers	178	194	181	125	117

¹ Values are based upon the year of the conviction.

Table 24: Driver Repeat DWI Convictions by Age Group in Otero County, 2013-2017

Age Groups	Driver Repeat DWI Convictions ¹				
	2013	2014	2015	2016	2017
15-19	1	0	0	0	0
20-24	11	4	5	2	1
25-29	7	6	9	8	11
30-34	13	10	4	10	5
35-39	8	10	12	7	7
40-44	14	9	10	8	5
45-49	8	15	7	9	2
50-54	12	10	9	7	6
55-59	5	3	2	4	3
60-64	2	4	1	1	1
65-69	1	1	4	2	2
70 +	1	0	1	0	0
Missing Data	0	0	0	0	0
Total Drivers	83	72	64	58	43

¹ Values are based upon the year of the conviction.

Table 25: Court Disposition of DWI Arrests for Otero County and the State, 2017

Court Disposition of DWI Arrest ¹	Otero County	Statewide	Percent of Statewide
Total DWI Arrests	245	10,501	2.3%
DWI Arrests Resulting in Convictions	116	5,533	2.1%
DWI Arrests Resulting in Dismissals ²	9	1,426	0.6%
DWI Arrests Awaiting Disposition	120	3,542	3.4%

¹ These are the number of DWI arrests in 2017 and whether the case resulted in a conviction or dismissal, or is still awaiting court disposition, as reported in the NM MVD Citation Tracking System (CTS) as of February 2019.

² For this table, a very small number of "not guilty" rulings may be included in the category Dismissals.

Table 26: Average Number of Days from Date of DWI Arrest to Date of Court Disposition in Otero County and the State, 2017

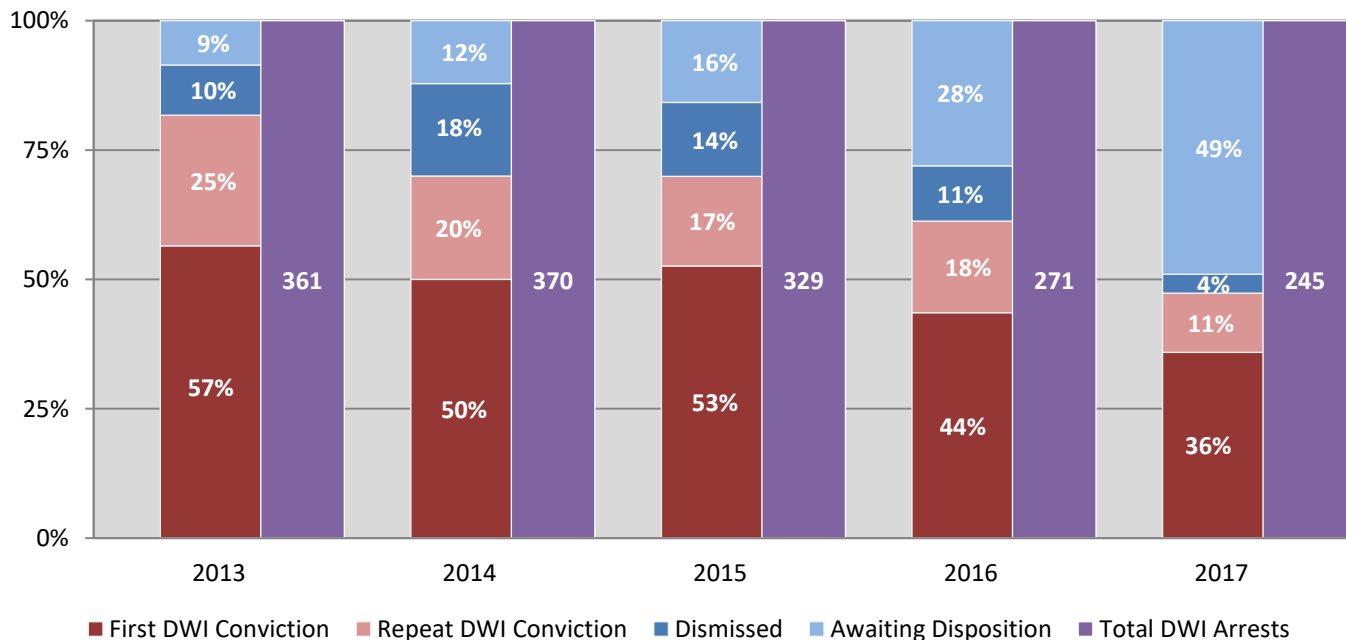
Court Disposition	Average Number of Days		Deviation from Statewide Average
	Otero County	Statewide	
DWI Conviction	94	166	-72
DWI Dismissal	202	175	27

Table 27: Court Disposition of DWI Arrests in Otero County, 2013-2017

Year of DWI Arrest ¹	Court Disposition				Total DWI Arrests
	First DWI Conviction	Repeat DWI Conviction	Dismissed	Awaiting Disposition	
2013	204	91	35	31	361
2014	185	74	66	45	370
2015	173	57	47	52	329
2016	118	48	29	76	271
2017	88	28	9	120	245

¹ Values are based upon the year of the arrest.

Figure 14: Court Dispositions by Percentage of DWI Arrests in Otero County, 2013-2017



*Table 27 contains the values used to calculate percentages shown in Figure 14.