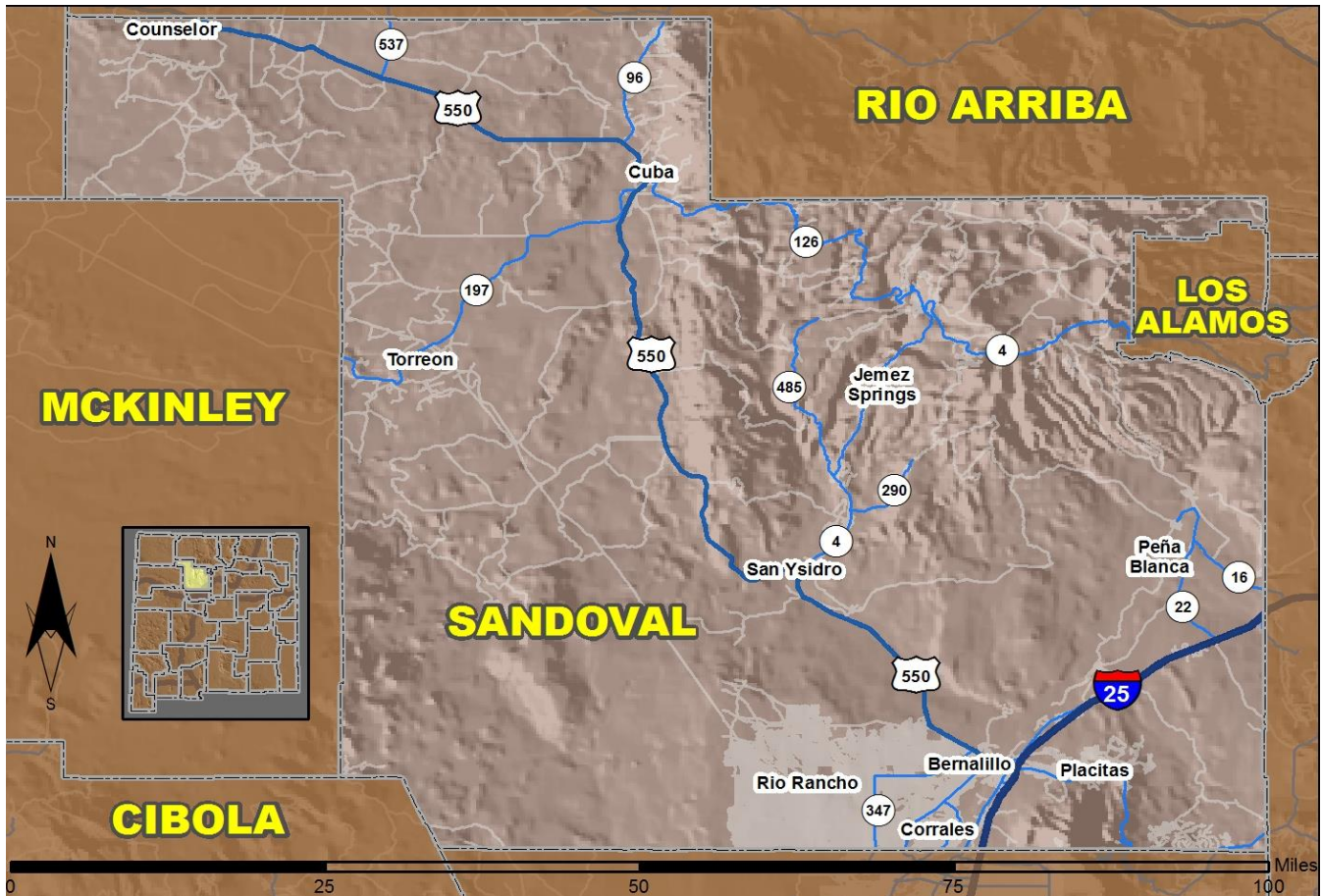


2017 Community Report

Sandoval County



Produced for the New Mexico Department of Transportation,
Traffic Safety Division, Traffic Records Bureau,
Under Contract 6093 by the University of New Mexico,
Geospatial and Population Studies, Traffic Research Unit

Distributed in compliance with New Mexico Statute 66-7-214
as a reference source regarding New Mexico traffic crashes

For the purposes of this report, data are compiled by the University of New Mexico, Geospatial and Population Studies, Traffic Research Unit (TRU), on behalf of the New Mexico Department of Transportation (NMDOT). Data in this report may differ from that in other data sources, such as the Federal Fatality Analysis Reporting System (FARS), due to the timing of publications and rules for how data are compiled and maintained in Federal vs. State databases. If you have questions regarding this report, please contact the Traffic Safety Division at 505-827-0427.

<http://tru.unm.edu/Crash-Reports/Community-Reports/>

Definitions

Aggravated DWI – A driver arrested for 1) driving with a BAC of 0.16 or higher, 2) driving under the influence of alcohol or drugs and causing bodily injury to a human being as a result, or 3) driving under the influence of alcohol or drugs and refusing to submit to a BAC test at the time of arrest for DWI.

Alcohol-involved Crash – A crash for which the Uniform Crash Report indicated that 1) a DWI citation was issued, 2) alcohol was a contributing factor, or 3) a person in control of a vehicle (including a pedestrian or pedalcyclist) was suspected of being under the influence of alcohol.

Alcohol-involved Driver – A person in control of a vehicle who was cited for DWI or indicated on the Uniform Crash Report as being either suspected or determined by testing to be under the influence of alcohol. There can be multiple alcohol-involved drivers in a single alcohol-involved crash.

Crash – A reported incident on a public roadway involving one or more motor vehicles that resulted in death, personal injury, or at least \$500 in property damage. Crashes on private property (such as a parking lot) are not included.

DWI Arrest (Citation) – In this report, a DWI arrest (a.k.a. a DWI citation) is a driver arrested for either DWI or aggravated DWI. New Mexico’s legal limit for presumption of driving while intoxicated (DWI) is 0.08 for non-commercial drivers older than 21 years of age, 0.04 for commercial vehicle drivers, and 0.02 for drivers younger than 21 years of age.

DWI Conviction – A driver convicted of driving under the intoxicating influence of alcohol, narcotics, or pathogenic drugs, including aggravated DWI.

Fatal Crash – A crash in which at least one person was killed. More than one person can be killed in a single fatal crash.

Fatalities – The number of people killed in a crash. The terms “killed” and “deaths” are synonymous with “fatalities.” A fatality is crash-related if it occurs at the time of the crash or if the person(s) involved in the crash dies within 30 days.

Injury Crash – A reported crash in which at least one person was injured. Injury crashes involve at least one suspected serious injury (Class A), suspected minor injury (Class B), or possible injury (Class C). Fatal crashes are not included.

Missing Data – An indication that the applicable field on the UCR form was left blank or contained an invalid code. Starting with crashes that occurred in 2012, improvements in the identification of missing data in the NMDOT crash database led to an increase in the reported amount of missing data.

Pedalcyclist – A person riding a mechanism of transport that is powered solely by pedals (a.k.a. bicyclist).

Pedestrian – A person on foot, walking, running, jogging, hiking, sitting or lying down who is involved in a motor vehicle traffic crash.

Sources

Crash Data – New Mexico Department of Transportation, Traffic Safety Division, Traffic Records Bureau, Traffic Crash Database, as of the report date below. Crash data are compiled using NMDOT Uniform Crash Reports (UCR), submitted by law enforcement agencies in the state, for any incident on a public roadway involving one or more motor vehicles that resulted in death, injury, or at least \$500 in property damage. These reports are processed by the NMDOT Traffic Records Bureau and analyzed by the University of New Mexico, Geospatial and Population Studies, Traffic Research Unit (TRU).

DWI Citation Tracking System (CTS) – New Mexico Taxation and Revenue Department (NM TRD), Motor Vehicle Division (MVD), DWI Citation Tracking System (CTS), as of February 2019. Repeat offenders are identified by the combination of account key, arrest date, and citation number. County data are based upon the county where the arrest took place. City data are based upon the city where the offender resides.

Urban Areas – New Mexico Department of Transportation, Asset Management and Planning, 2010 U.S. Census Urbanized Area Boundaries, NMDOT-Adjusted, and U.S. Census Urban Clusters, August 21, 2013. In crashes before 2013, “urban” was defined as a town or city with a population of at least 2,500 people.

Table 1: Total Crashes and Alcohol-involved Crashes by Crash Severity in Sandoval County, 2008-2017

Year	Total Crashes				Alcohol-involved Crashes			
	Fatal	Injury	Property Damage Only	Total	Fatal	Injury	Property Damage Only	Total
2008	17	614	1,258	1,889	6	65	65	136
2009	20	612	1,332	1,964	9	35	67	111
2010	12	599	1,338	1,949	5	40	54	99
2011	11	544	1,266	1,821	5	37	59	101
2012	11	446	1,132	1,589	7	43	63	113
2013	13	482	1,156	1,651	5	43	57	105
2014	10	392	1,030	1,432	3	43	43	89
2015	5	491	1,197	1,693	2	37	55	94
2016	11	569	1,350	1,930	6	40	63	109
2017	13	570	1,513	2,096	4	50	60	114

Figure 1: Alcohol-involved Fatal and Injury Crashes Compared with Non-alcohol-involved Fatal and Injury Crashes in Sandoval County, 2008-2017

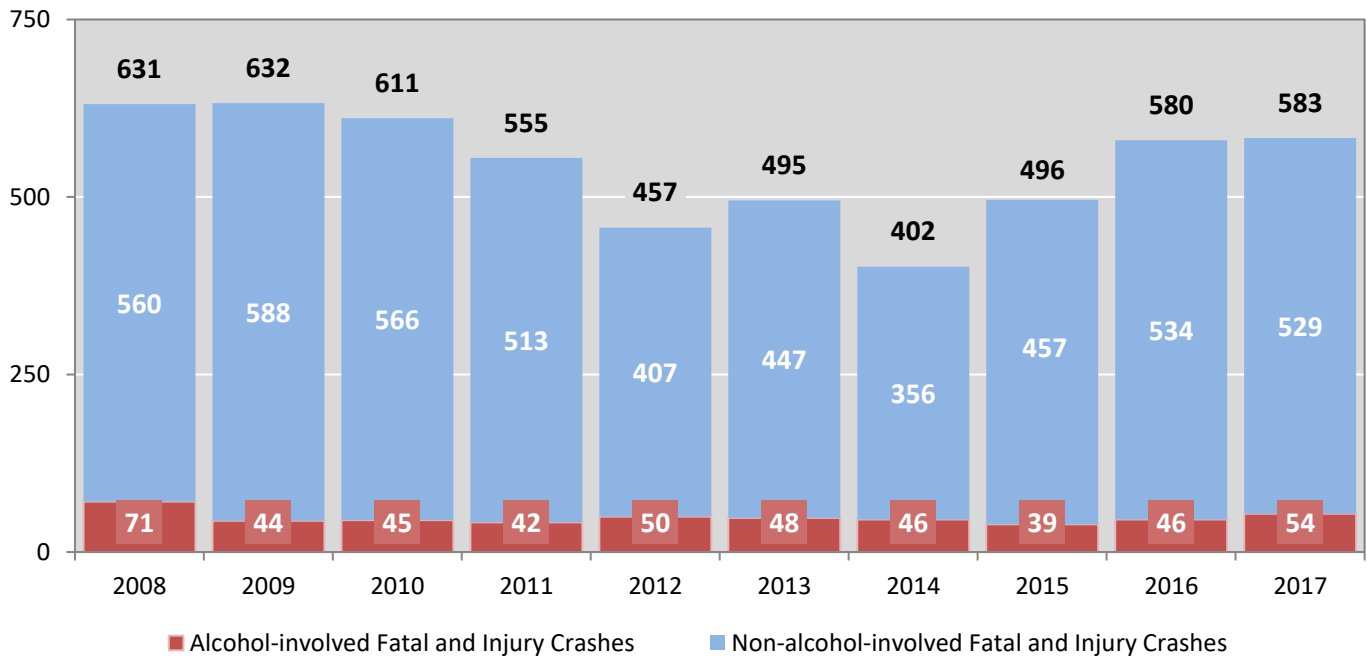


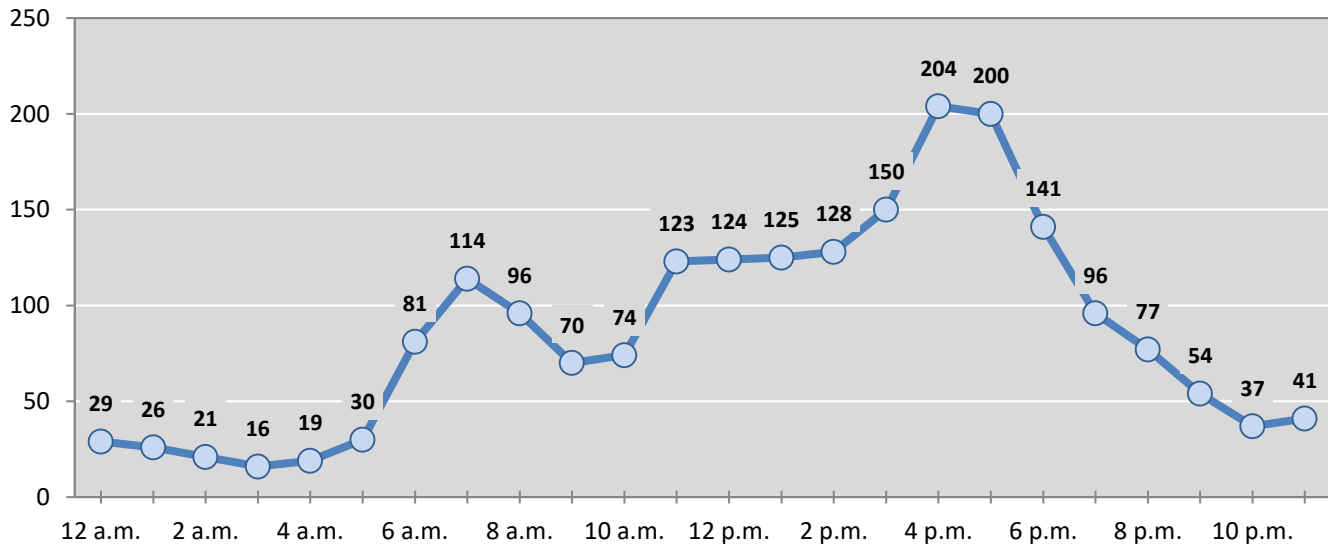
Table 2: Crashes by Month in Sandoval County, 2013-2017

Month	Crashes					5-Year Average
	2013	2014	2015	2016	2017	
January	117	118	152	133	156	135
February	146	132	98	141	153	134
March	108	150	70	140	210	136
April	126	78	114	159	176	131
May	147	137	135	156	143	144
June	147	95	156	139	149	137
July	107	71	143	160	171	130
August	173	90	147	168	176	151
September	152	135	176	188	208	172
October	155	124	155	193	189	163
November	156	163	150	171	180	164
December	117	139	197	182	185	164
Total Crashes	1,651	1,432	1,693	1,930	2,096	1,760

Table 3: Alcohol-involved Crashes by Month in Sandoval County, 2013-2017

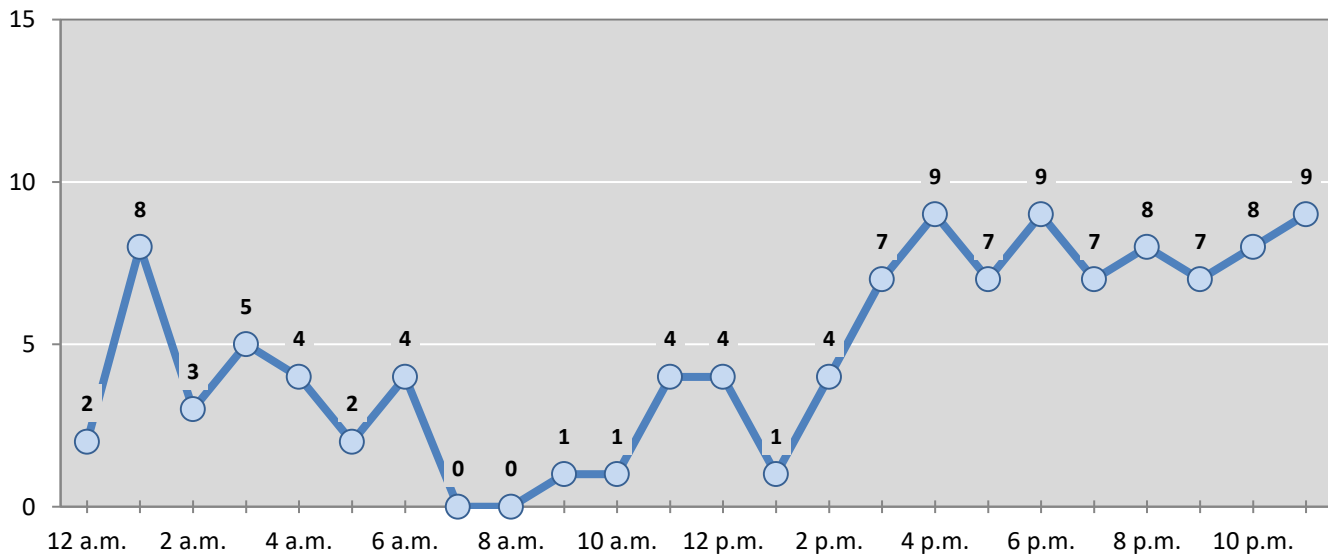
Month	Alcohol-involved Crashes					5-Year Average
	2013	2014	2015	2016	2017	
January	7	11	7	6	12	9
February	12	8	6	5	8	8
March	15	10	3	10	10	10
April	11	3	10	9	8	8
May	8	8	6	11	12	9
June	4	9	6	13	12	9
July	8	6	11	10	15	10
August	9	5	10	7	9	8
September	7	10	10	7	7	8
October	4	5	6	11	7	7
November	11	9	9	7	6	8
December	9	5	10	13	8	9
Total Crashes	105	89	94	109	114	102

Figure 2: Crashes by Hour in Sandoval County, 2017



* In 2017, Sandoval County had 20 crashes for which hour data were missing.

Figure 3: Alcohol-involved Crashes by Hour in Sandoval County, 2017



* In 2017, Sandoval County had 0 alcohol-involved crashes for which hour data were missing.

Table 4: Alcohol-involved Crashes by Day of Week in Sandoval County, 2013-2017

Day of Week	Alcohol-involved Crashes					5-Year Average
	2013	2014	2015	2016	2017	
Sunday	19	19	14	17	23	18
Monday	12	9	13	10	12	11
Tuesday	8	8	9	14	13	10
Wednesday	11	9	11	12	19	12
Thursday	16	11	10	6	14	11
Friday	20	19	20	31	10	20
Saturday	19	14	17	19	23	18
Total Crashes	105	89	94	109	114	102

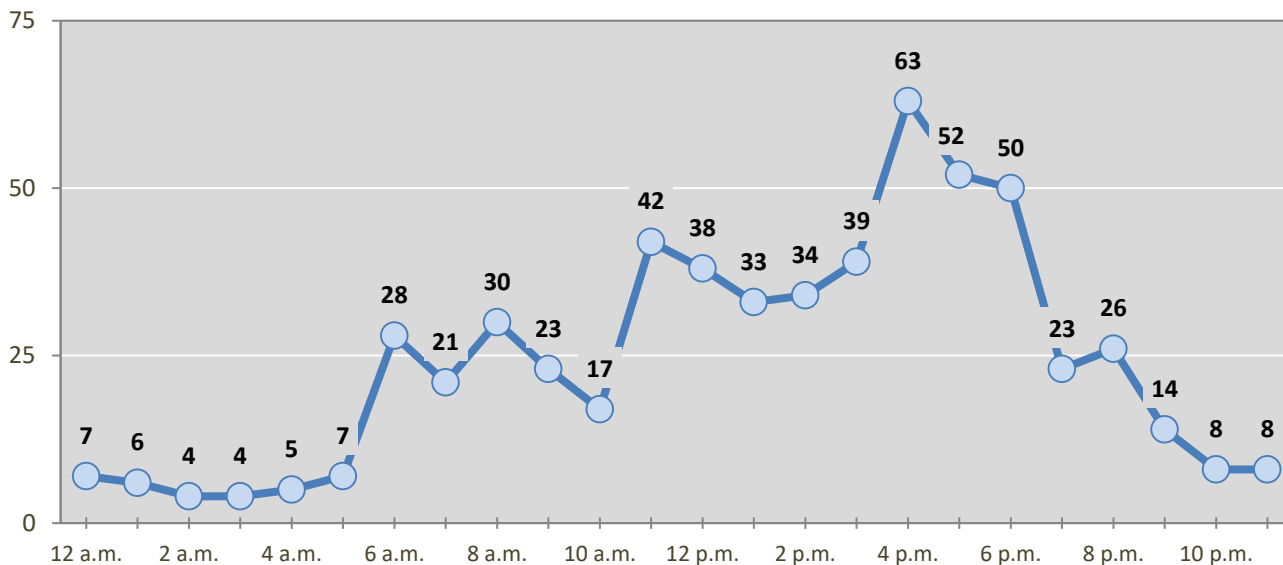
Table 5: Fatal and Injury Crashes by Day of Week in Sandoval County, 2013-2017

Day of Week	Fatal and Injury Crashes					5-Year Average
	2013	2014	2015	2016	2017	
Sunday	62	52	69	59	51	59
Monday	61	59	62	94	87	73
Tuesday	55	74	69	83	93	75
Wednesday	92	60	60	80	94	77
Thursday	72	49	76	84	86	73
Friday	89	52	81	99	90	82
Saturday	64	56	79	81	82	72
Total Crashes	495	402	496	580	583	511

Table 6: Pedestrian and Pedalcyclist Crashes by Day of Week in Sandoval County, 2013-2017

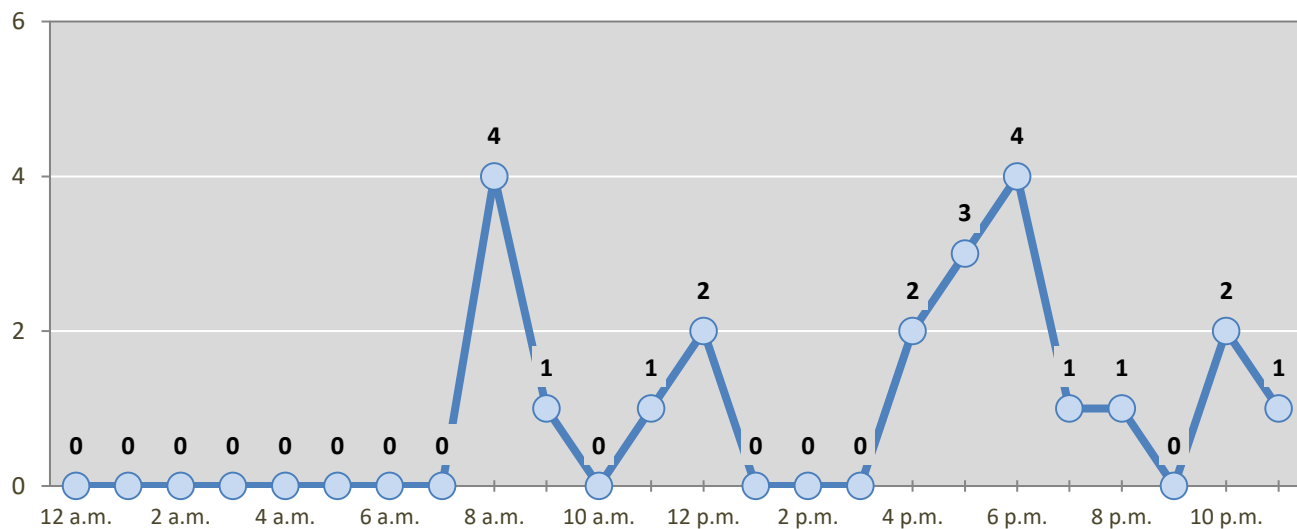
Day of Week	Pedestrian and Pedalcyclist Crashes					5-Year Average
	2013	2014	2015	2016	2017	
Sunday	1	0	2	3	2	2
Monday	3	3	2	4	2	3
Tuesday	1	1	3	3	3	2
Wednesday	5	6	2	3	5	4
Thursday	2	2	4	4	6	4
Friday	3	2	4	4	2	3
Saturday	1	1	3	2	2	2
Total Crashes	16	15	20	23	22	19

Figure 4: Fatal and Injury Crashes by Hour in Sandoval County, 2017



* In 2017, Sandoval County had 1 crashes for which hour data were missing.

Figure 5: Pedestrian and Pedalcyclist Crashes by Hour in Sandoval County, 2017



* In 2017, Sandoval County had 0 crashes for which hour data were missing.

Table 7: Severity of Injuries to People in Crashes by Rural and Urban Location in Sandoval County, 2017

Urban and Rural Locations by Alcohol-involvement	People in Crashes by Severity of Injuries					Total People
	Fatalities (Class K)	Suspected Serious Injuries (Class A)	Suspected Minor Injuries (Class B)	Possible Injuries (Class C)	No Apparent Injuries (Class O)	
People in Alcohol-involved Crashes	8	10	42	34	186	280
Urban	1	6	29	24	155	215
Rural Non-Interstate	6	4	9	9	26	54
Rural Interstate	1	0	4	1	5	11
People in Crashes	17	38	239	564	4,589	5,447
Urban	6	27	195	508	4,118	4,854
Rural Non-Interstate	10	9	30	34	301	384
Rural Interstate	1	2	14	22	170	209
Percent in Alcohol-involved Crashes	47%	26%	18%	6%	4%	5%

Table 8: Total Crashes by Roadway System and Crash Severity in Sandoval County, 2013-2017

Crash Severity by System	Crashes by Year					5-Year Average
	2013	2014	2015	2016	2017	
Total Rural Interstate	29	73	80	87	86	71
Fatal Crash	0	0	0	1	1	0
Injury Crash	9	18	21	28	22	20
Property Damage Only Crash	20	55	59	58	63	51
Total Rural Non-Interstate	178	213	246	219	206	212
Fatal Crash	5	3	2	6	6	4
Injury Crash	51	51	75	58	50	57
Property Damage Only Crash	122	159	169	155	150	151
Total Urban	1,444	1,146	1,367	1,624	1,804	1,477
Fatal Crash	8	7	3	4	6	6
Injury Crash	422	323	395	483	498	424
Property Damage Only Crash	1,014	816	969	1,137	1,300	1,047

Table 9: Total Crashes by Crash Classification in Sandoval County, 2013-2017

Crash Classification	Total Crashes by Year					5-Year Average
	2013	2014	2015	2016	2017	
Animal	58	59	42	63	78	60
Fixed Object	234	213	254	243	213	231
Other (Non-Collision)	31	29	32	25	30	29
Other (Object)	44	46	48	30	47	43
Other Vehicle	1,056	904	1,104	1,365	1,546	1,195
Overturn/Rollover	102	83	54	75	78	78
Parked Vehicle	89	59	48	49	57	60
Pedalcyclist	7	6	8	10	12	9
Pedestrian	9	9	12	13	10	11
Railroad Train	0	0	0	0	0	0
Rollover	0	2	55	21	13	18
Vehicle on Other Road	5	5	6	8	11	7
Missing Data	16	17	30	28	1	18
Total Crashes	1,651	1,432	1,693	1,930	2,096	1,760

Table 10: Vehicles in Crashes by Vehicle Type in Sandoval County, 2013-2017

Vehicle Type ¹	Vehicles in Crashes by Vehicle Type					5-Year Average
	2013	2014	2015	2016	2017	
Bus	7	10	7	18	4	9
Motorcycle	69	55	57	48	52	56
Passenger	1,507	1,299	1,599	1,964	2,253	1,724
Pedalcyclist	7	8	8	10	12	9
Pedestrian	9	9	12	13	10	11
Pickup	487	414	533	576	579	518
Semi	65	66	68	81	92	74
Van/SUV/4WD	534	479	551	788	845	639
Other Vehicle	104	31	52	8	7	40
Missing Data	167	196	186	114	121	157
Total Vehicles	2,956	2,567	3,073	3,620	3,975	3,238

¹ Pedestrians and pedalcyclists are counted as non-motorized vehicles, when involved in a crash with a motor vehicle. See Page 17 for data on drivers of non-motorized vehicles in crashes (i.e. pedestrians and pedalcyclists).

Table 11: Motor Vehicle Drivers in Crashes by Vehicle Type and Age Group in Sandoval County, 2017

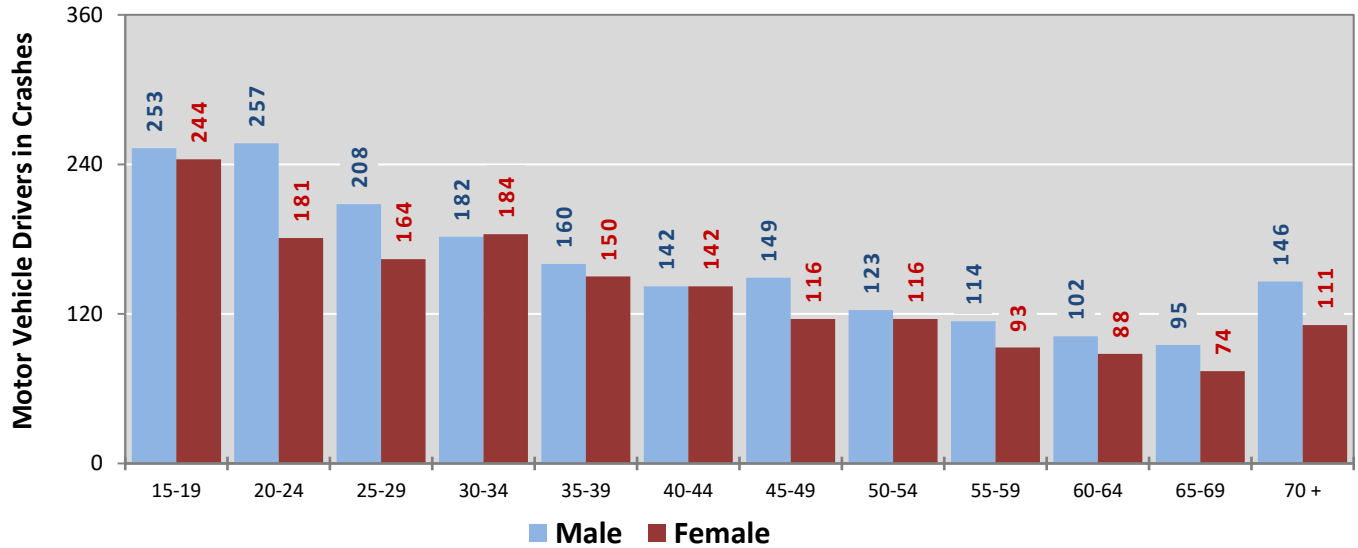
Age Groups	Motor Vehicle ¹ Drivers by Vehicle Type and Age Group								Total Drivers
	Bus	Motor-cycle	Passenger	Pickup	Semi	Van 4WD SUV	Other Vehicle	Missing Data	
15-19	0	9	346	57	1	84	0	2	499
20-24	0	7	322	45	5	55	1	4	439
25-29	0	6	233	41	4	88	1	0	373
30-34	0	6	214	44	6	93	0	3	366
35-39	0	2	157	46	12	93	0	1	311
40-44	0	3	150	41	10	76	1	3	284
45-49	1	3	139	49	12	62	0	0	266
50-54	2	5	109	54	10	56	1	2	239
55-59	0	2	102	52	10	37	1	3	207
60-64	0	3	99	45	5	38	0	0	190
65-69	0	4	85	20	4	53	1	3	170
70 +	1	1	152	33	6	65	0	0	258
Missing Data	0	1	145	52	7	45	1	100	351
Total Drivers	4	52	2,253	579	92	845	7	121	3,953

Table 12: Alcohol-involved Motor Vehicle Drivers in Crashes by Vehicle Type and Age Group in Sandoval County, 2017

Age Groups	Alcohol-involved Motor Vehicle ¹ Drivers by Vehicle Type and Age Group								Total Drivers
	Bus	Motor-cycle	Passenger	Pickup	Semi	Van 4WD SUV	Other Vehicle	Missing Data	
15-19	0	0	4	1	0	1	0	0	6
20-24	0	0	15	4	0	1	0	0	20
25-29	0	0	18	1	0	4	0	0	23
30-34	0	1	6	5	0	6	0	0	18
35-39	0	0	6	0	0	4	0	0	10
40-44	0	0	7	2	0	2	0	0	11
45-49	0	1	3	3	1	4	0	0	12
50-54	0	0	1	2	0	2	0	0	5
55-59	0	0	4	1	0	0	0	0	5
60-64	0	0	1	1	0	0	0	0	2
65-69	0	0	2	0	0	1	0	0	3
70 +	0	0	0	0	0	0	0	0	0
Missing Data	0	0	1	0	0	0	0	1	2
Total Drivers	0	2	68	20	1	25	0	1	117

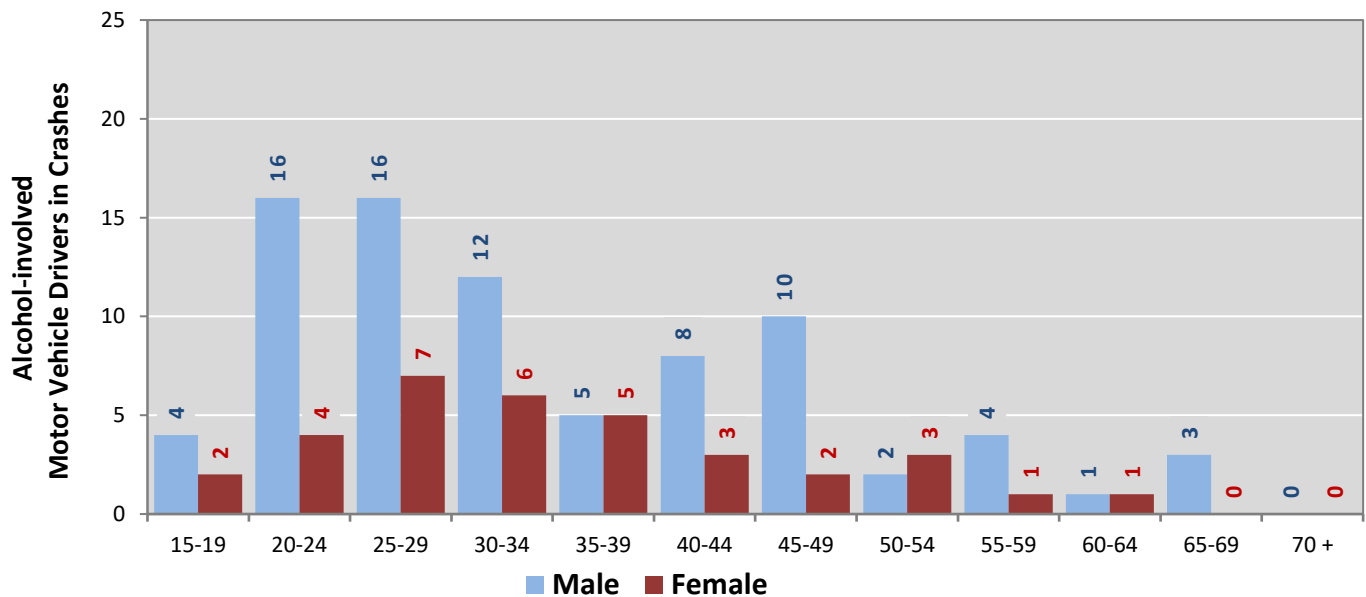
¹ See Page 17 for data on drivers of non-motorized vehicles in crashes (i.e. pedestrians and pedalcyclists).

Figure 6: Motor Vehicle Drivers in Crashes by Age Group and Sex in Sandoval County, 2017



* In 2017, Sandoval County had 359 drivers in crashes for which age or sex data were missing.

Figure 7: Alcohol-involved Motor Vehicle Drivers in Crashes by Age Group and Sex in Sandoval County, 2017



* In 2017, Sandoval County had 2 drivers in crashes for which age or sex data were missing.

Table 13: Alcohol-involved Motor Vehicle Drivers Under 21 (Ages 15-20) in Crashes in Sandoval County, 2013-2017

Age ¹	Year					5-Year Total
	2013	2014	2015	2016	2017	
15	1	0	0	0	0	1
16	1	0	1	0	0	2
17	1	1	1	1	1	5
18	2	3	1	2	4	12
19	0	2	1	3	1	7
20	4	4	3	3	3	17
Total Drivers	9	10	7	9	9	44

Table 14: Motor Vehicle Drivers Under 21 (Ages 15-20) in Crashes by Age, Sex and Alcohol-involvement in Sandoval County, 2017

Age ¹	Total Drivers				Alcohol-involved Drivers			
	Sex		Total Drivers	Percent of Total	Sex		Total Drivers	Percent of Total
	Male	Female			Male	Female		
15	14	10	24	4%	0	0	0	0%
16	49	56	105	17%	0	0	0	0%
17	70	62	132	22%	1	0	1	11%
18	57	55	112	19%	3	1	4	44%
19	63	61	124	21%	0	1	1	11%
20	63	43	106	18%	2	1	3	33%
Total Drivers	316	287	603	100%	6	3	9	100%

¹ For analysis of drivers under age 21, when the driver age or sex are not identified on the crash report (typically hit-and-run drivers), the driver data are considered unreliable and are excluded from the analysis.

**Table 15: Frequency of Contributing Factors in Crashes
by Crash Severity in Sandoval County, 2017**

Contributing Factors	Frequency of Contributing Factor ¹ by Crash Severity			
	Frequency in Fatal Crashes	Frequency in Injury Crashes	Frequency in Property Damage Only Crashes	Frequency in All Crashes
Human	34	922	2,066	3,022
Driver Inattention	4	295	612	911
Following Too Closely	0	115	350	465
Failed to Yield Right of Way	1	123	236	360
Other Improper Driving	2	68	132	202
Excessive Speed	6	56	112	174
Alcohol Involved	5	51	63	119
Made Improper Turn	1	21	83	105
Speed Too Fast for Conditions	2	25	70	97
Improper Lane Change	0	17	79	96
Avoid No Contact - Vehicle	3	21	60	84
Disregarded Traffic Signal	0	28	47	75
Drove Left Of Center	5	29	30	64
Improper Backing	0	6	54	60
Avoid No Contact - Other	0	10	40	50
Improper Overtaking	1	17	29	47
Passed Stop Sign	0	8	24	32
Drug Involved	2	12	11	25
Cell Phone	0	9	13	22
Failed to Yield to Police Vehicle	0	5	4	9
Vehicle Skidded Before Brake	0	1	7	8
High Speed Pursuit	1	0	5	6
Pedestrian Error	1	4	0	5
Driverless Moving Vehicle	0	1	2	3
Texting	0	0	2	2
Failed to Yield to Emergency Vehicle	0	0	1	1
Vehicle	1	16	45	62
Defective Tires	1	4	18	23
Inadequate Brakes	0	7	9	16
Other Mechanical Defect	0	4	11	15
Defective Steering	0	1	7	8
Environment	0	2	7	9
Road Defect	0	2	5	7
Low Visibility Due to Smoke	0	0	1	1
Traffic Control Not Functioning	0	0	1	1
Other	7	550	1,261	1,818
None	3	473	1,055	1,531
Other - No Driver Error	4	77	206	287

¹ Multiple contributing factors may be reported for any vehicle in a crash.

Table 16: People in Crashes by Crash Classification and Severity of Injuries in Sandoval County, 2017

Crash Classification	People in Crashes by Severity of Injuries					Total People
	Fatalities (Class K)	Suspected Serious Injuries (Class A)	Suspected Minor Injuries (Class B)	Possible Injuries (Class C)	No Apparent Injuries (Class O)	
Animal	0	0	5	7	115	127
Fixed Object	2	6	26	20	253	307
Other (Non-Collision)	0	0	7	1	38	46
Other (Object)	0	0	3	0	74	77
Other Vehicle	12	28	136	510	3,847	4,533
Overturn/Rollover	1	4	27	20	81	133
Parked Vehicle	1	0	7	0	118	126
Pedalcyclist	0	0	10	2	18	30
Pedestrian	1	0	9	0	13	23
Railroad Train	0	0	0	0	0	0
Rollover	0	0	8	2	8	18
Vehicle on Other Road	0	0	1	2	22	25
Missing Data	0	0	0	0	2	2
Total People	17	38	239	564	4,589	5,447

Table 17: Killed or Injured Unbelted People in Crashes by Sex and Age Group in Sandoval County, 2017

Age Groups	Unbelted People Killed or Injured ^{1,2}				Total People
	Male	Percent of Male	Female	Percent of Female	
0-4	0	0%	0	0%	0
5-9	0	0%	1	9%	1
10-14	1	5%	1	9%	2
15-19	4	18%	0	0%	4
20-24	2	9%	3	27%	5
25-29	6	27%	1	9%	7
30-34	3	14%	1	9%	4
35-39	2	9%	0	0%	2
40-44	1	5%	1	9%	2
45-49	2	9%	0	0%	2
50-54	1	5%	1	9%	2
55-59	0	0%	1	9%	1
60-64	0	0%	0	0%	0
65-69	0	0%	1	9%	1
70 +	0	0%	0	0%	0
Missing Data	0	0%	0	0%	0
Total People	22	100%	11	100%	33

¹ People injured are in one of three categories: suspected serious injury, suspected minor injury, or possible injury.

² Excludes people in or on buses, heavy trucks, motorcycles, or ATVs.

Figure 8: Seatbelt Use by People in Crashes with Fatal or Suspected Serious Injuries in Sandoval County, 2013-2017

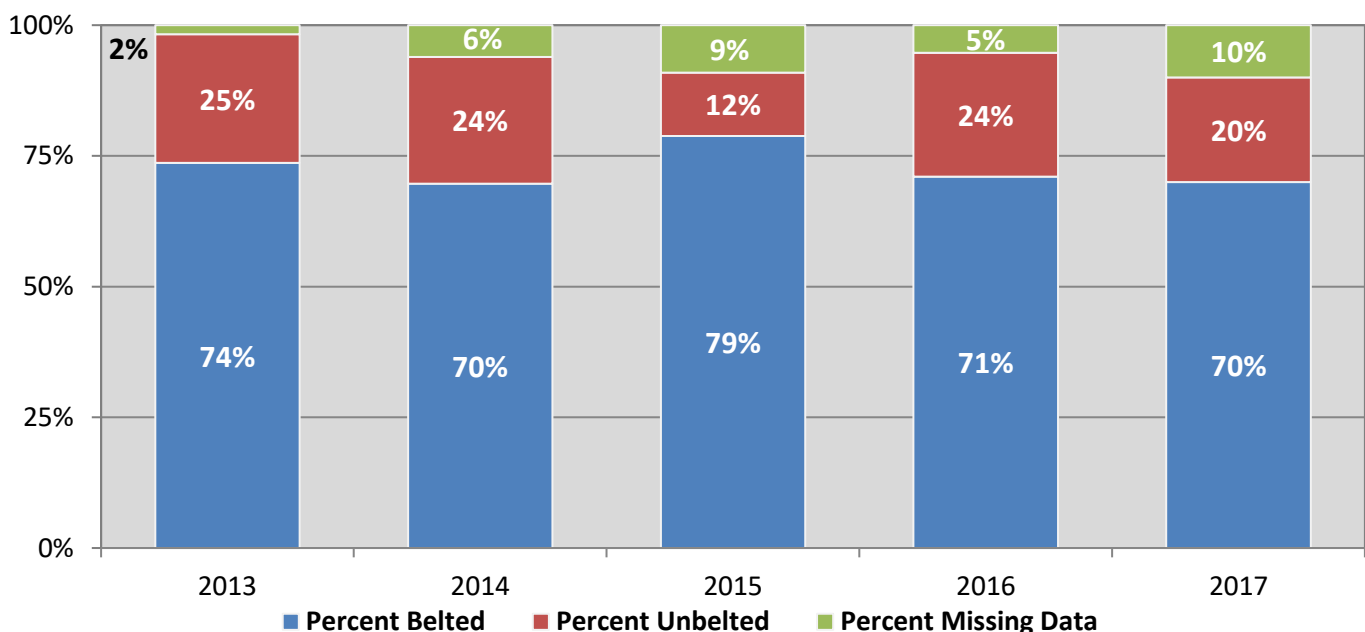
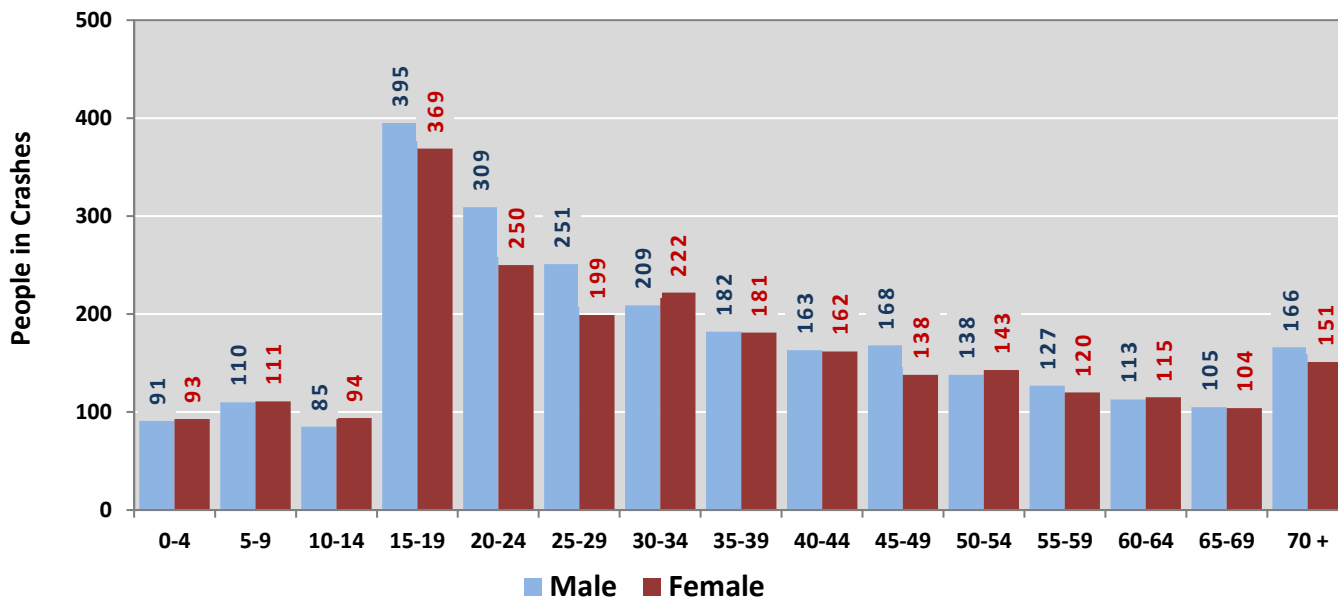
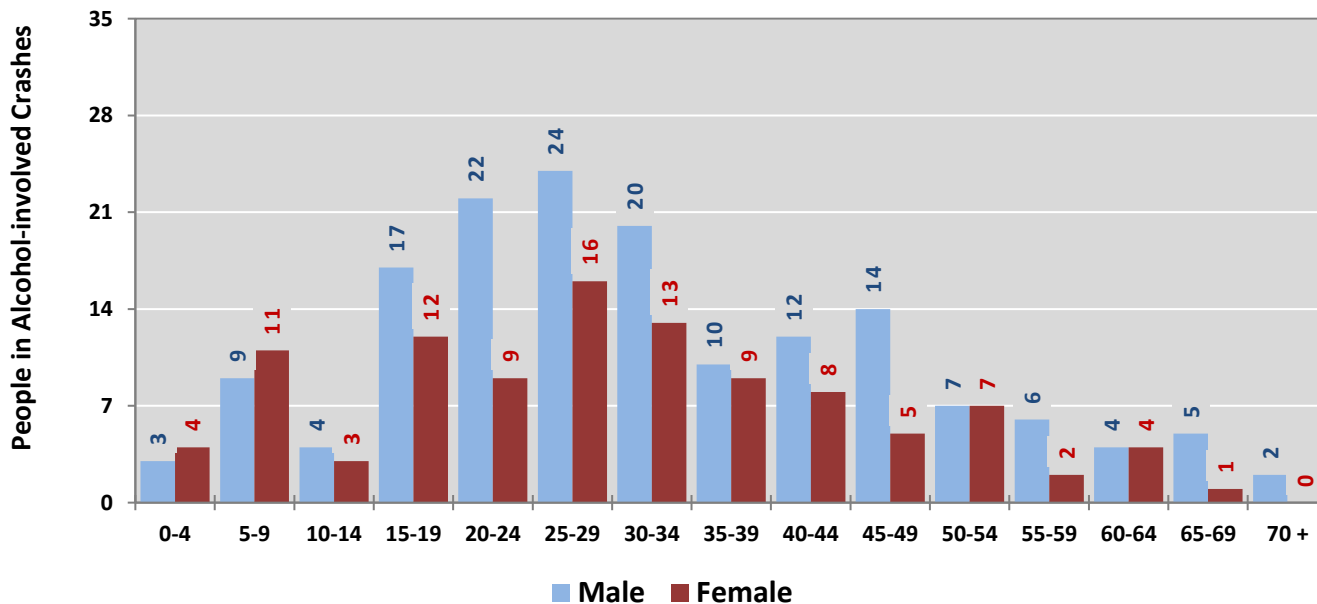


Figure 9: People in Crashes by Age Group and Sex in Sandoval County, 2017



* In 2017, Sandoval County had 383 people in crashes for which age or sex data were missing.

Figure 10: People in Alcohol-involved Crashes by Age Group and Sex in Sandoval County, 2017



* In 2017, Sandoval County had 17 people in alcohol-involved crashes for which age or sex data were missing.

Table 18: Pedestrians and Pedalcyclists in Crashes by Age Group in Sandoval County, 2013-2017

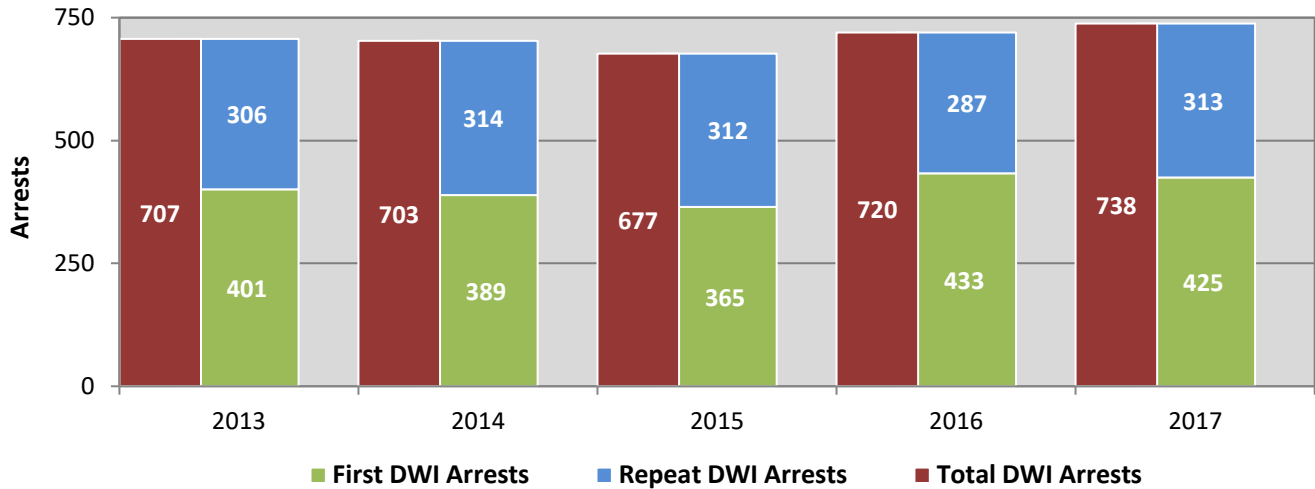
Age Groups	Pedestrians and Pedalcyclists ¹ in Crashes					5-Year Total People
	2013	2014	2015	2016	2017	
0-4	0	0	1	0	0	1
5-9	1	1	1	1	0	4
10-14	0	2	4	2	0	8
15-19	3	5	0	1	0	9
20-24	1	1	1	1	1	5
25-29	1	1	2	2	3	9
30-34	0	2	1	3	2	8
35-39	1	1	0	3	2	7
40-44	1	1	2	0	1	5
45-49	2	1	2	0	3	8
50-54	2	0	2	3	4	11
55-59	1	0	1	1	2	5
60-64	0	0	1	1	1	3
65-69	1	0	0	1	2	4
70 +	1	2	0	4	1	8
Missing Data	1	0	2	0	0	3
Total People	16	17	20	23	22	98

Table 19: Pedestrians and Pedalcyclists in Crashes by Alcohol Involvement and Severity of Injuries in Sandoval County, 2017

Alcohol Involvement	Pedestrians and Pedalcyclists ¹ in Crashes					Total People
	Fatalities (Class K)	Suspected Serious Injuries (Class A)	Suspected Minor Injuries (Class B)	Possible Injuries (Class C)	No Apparent Injury (Class O)	
Total Pedalcyclists	0	0	10	2	0	12
Involved	0	0	1	0	0	1
Not Involved	0	0	9	2	0	11
Total Pedestrians	1	0	9	0	0	10
Involved	0	0	1	0	0	1
Not Involved	1	0	8	0	0	9
Total People	1	0	19	2	0	22

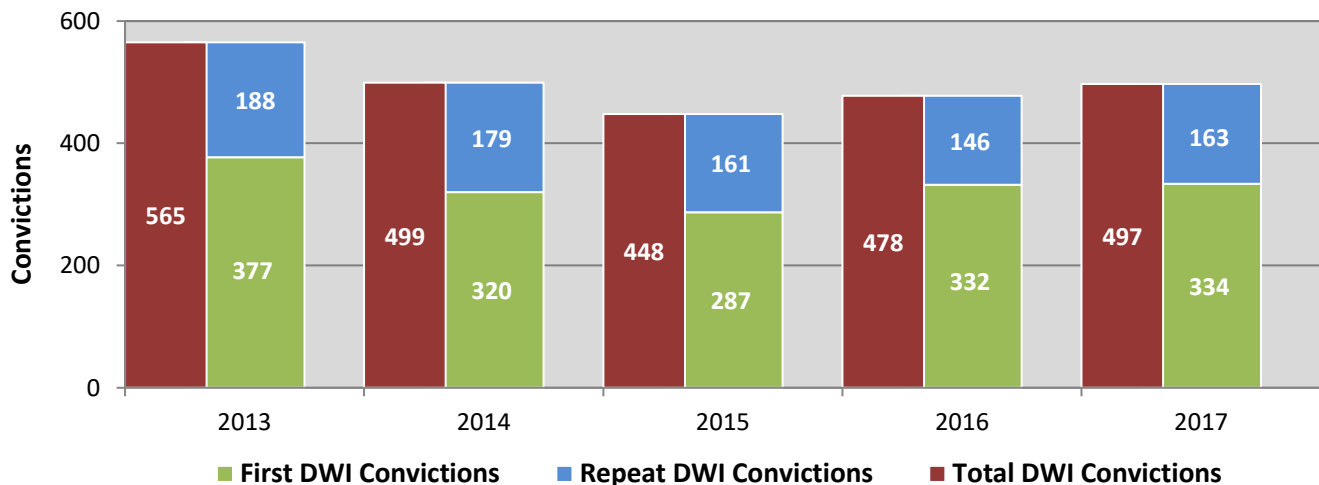
¹ Pedestrians and pedalcyclists are counted as non-motorized vehicles, when involved in a crash with a motor vehicle.

**Figure 11: DWI Arrests in Sandoval County,
Showing First and Repeat DWI Arrests, 2013-2017**



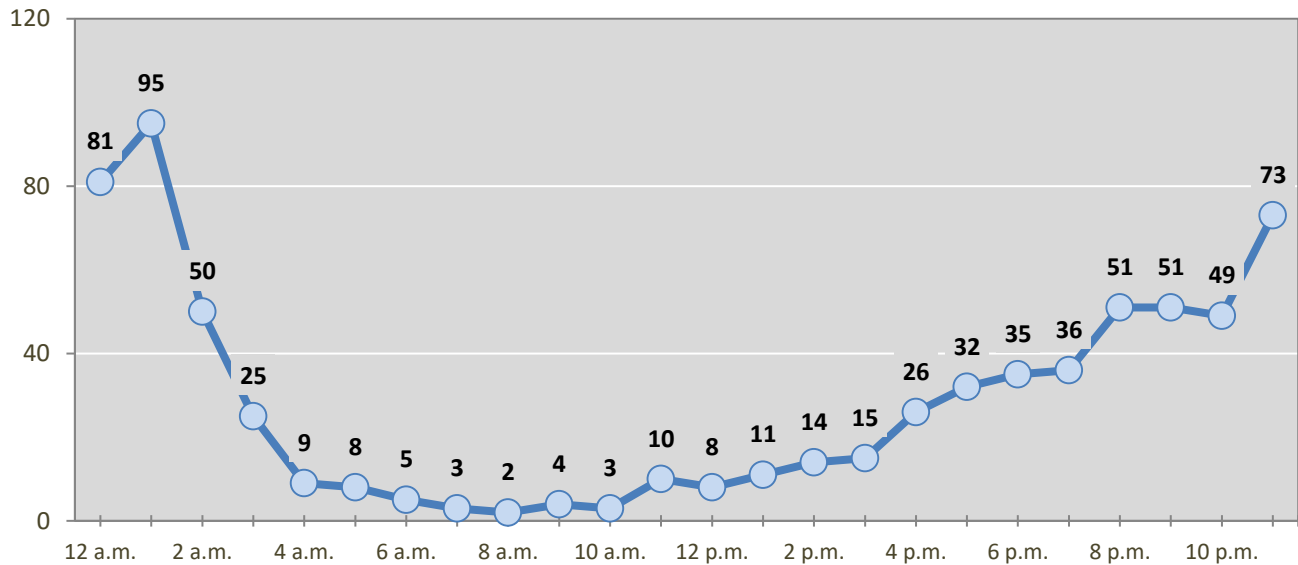
*Values are based upon the year of the arrest.

**Figure 12: DWI Convictions in Sandoval County,
Showing First and Repeat DWI Convictions, 2013-2017**



*Values are based upon the year of the conviction.

Figure 13: DWI Arrests by Hour in Sandoval County, 2017



* In 2017, Sandoval County had 42 arrests for which hour data were missing.

Table 20: DWI Arrests by Day of Week in Sandoval County, 2013-2017

Day of Week	Year					5-Year Average
	2013	2014	2015	2016	2017	
Sunday	141	133	138	130	163	141
Monday	52	60	55	48	65	56
Tuesday	66	49	49	49	44	51
Wednesday	54	67	70	86	73	70
Thursday	87	103	87	94	102	95
Friday	112	118	115	152	119	123
Saturday	195	173	163	161	172	173
Total Arrests	707	703	677	720	738	709

Table 21: Driver First DWI Arrests by Age Group in Sandoval County, 2013-2017

Age Groups	Driver First DWI Arrests ¹				
	2013	2014	2015	2016	2017
15-19	28	24	15	28	28
20-24	110	85	96	101	109
25-29	63	77	69	77	75
30-34	48	59	60	69	63
35-39	51	37	27	45	39
40-44	28	39	25	37	28
45-49	21	25	23	21	34
50-54	21	12	24	24	16
55-59	19	18	11	14	10
60-64	4	6	7	8	14
65-69	6	3	7	7	7
70 +	2	4	1	2	2
Missing Data	0	0	0	0	0
Total Drivers	401	389	365	433	425

¹ Values are based upon the year of the arrest.

Table 22: Driver Repeat DWI Arrests by Age Group in Sandoval County, 2013-2017

Age Groups	Driver Repeat DWI Arrests ¹				
	2013	2014	2015	2016	2017
15-19	1	0	3	0	2
20-24	31	23	21	24	25
25-29	67	46	57	45	58
30-34	52	54	43	55	62
35-39	38	49	44	52	51
40-44	41	37	51	28	31
45-49	29	38	29	36	22
50-54	25	32	30	18	23
55-59	15	23	19	16	23
60-64	5	5	12	6	8
65-69	1	3	2	3	6
70 +	1	4	1	4	2
Missing Data	0	0	0	0	0
Total Drivers	306	314	312	287	313

¹ Values are based upon the year of the arrest.

Table 23: Driver First DWI Convictions by Age Group in Sandoval County, 2013-2017

Age Groups	Driver First DWI Convictions ¹				
	2013	2014	2015	2016	2017
15-19	16	9	10	22	9
20-24	90	79	73	84	75
25-29	70	65	61	59	70
30-34	44	46	48	57	58
35-39	48	32	27	34	39
40-44	37	30	27	21	25
45-49	26	19	16	18	21
50-54	21	16	10	11	16
55-59	11	14	9	6	10
60-64	8	5	3	8	5
65-69	5	4	2	9	4
70 +	1	1	1	3	2
Missing Data	0	0	0	0	0
Total Drivers	377	320	287	332	334

¹ Values are based upon the year of the conviction.

Table 24: Driver Repeat DWI Convictions by Age Group in Sandoval County, 2013-2017

Age Groups	Driver Repeat DWI Convictions ¹				
	2013	2014	2015	2016	2017
15-19	0	0	0	0	1
20-24	18	14	8	6	15
25-29	41	30	24	25	33
30-34	28	37	20	18	27
35-39	21	20	29	23	21
40-44	26	20	22	23	17
45-49	20	18	21	21	15
50-54	13	21	20	13	12
55-59	11	14	11	11	12
60-64	8	3	3	5	5
65-69	2	0	3	0	2
70 +	0	2	0	1	3
Missing Data	0	0	0	0	0
Total Drivers	188	179	161	146	163

¹ Values are based upon the year of the conviction.

Table 25: Court Disposition of DWI Arrests for Sandoval County and the State, 2017

Court Disposition of DWI Arrest ¹	Sandoval County	Statewide	Percent of Statewide
Total DWI Arrests	738	10,501	7.0%
DWI Arrests Resulting in Convictions	498	5,533	9.0%
DWI Arrests Resulting in Dismissals ²	123	1,426	8.6%
DWI Arrests Awaiting Disposition	117	3,542	3.3%

¹ These are the number of DWI arrests in 2017 and whether the case resulted in a conviction or dismissal, or is still awaiting court disposition, as reported in the NM MVD Citation Tracking System (CTS) as of February 2019.

² For this table, a very small number of "not guilty" rulings may be included in the category Dismissals.

Table 26: Average Number of Days from Date of DWI Arrest to Date of Court Disposition in Sandoval County and the State, 2017

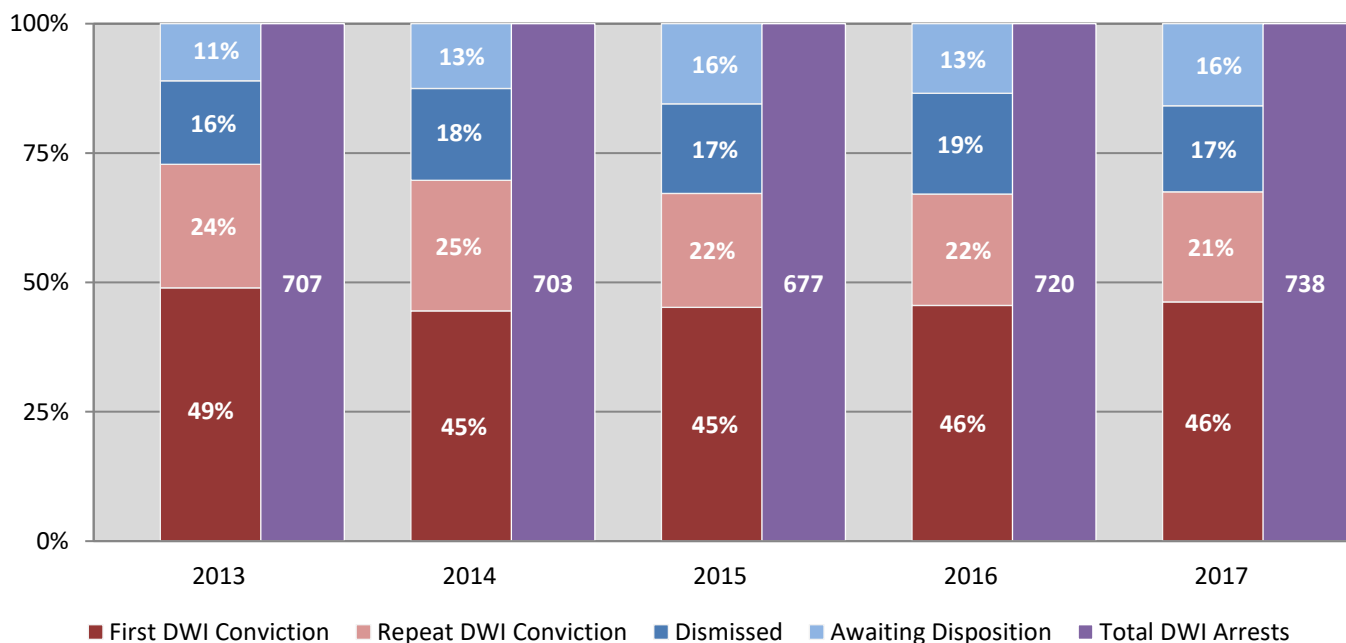
Court Disposition	Average Number of Days		Deviation from Statewide Average
	Sandoval County	Statewide	
DWI Conviction	161	166	-5
DWI Dismissal	195	175	20

Table 27: Court Disposition of DWI Arrests in Sandoval County, 2013-2017

Year of DWI Arrest ¹	Court Disposition				Total DWI Arrests
	First DWI Conviction	Repeat DWI Conviction	Dismissed	Awaiting Disposition	
2013	346	169	114	78	707
2014	313	177	125	88	703
2015	306	149	117	105	677
2016	328	155	140	97	720
2017	341	157	123	117	738

¹ Values are based upon the year of the arrest.

Figure 14: Court Dispositions by Percentage of DWI Arrests in Sandoval County, 2013-2017



*Table 27 contains the values used to calculate percentages shown in Figure 14.