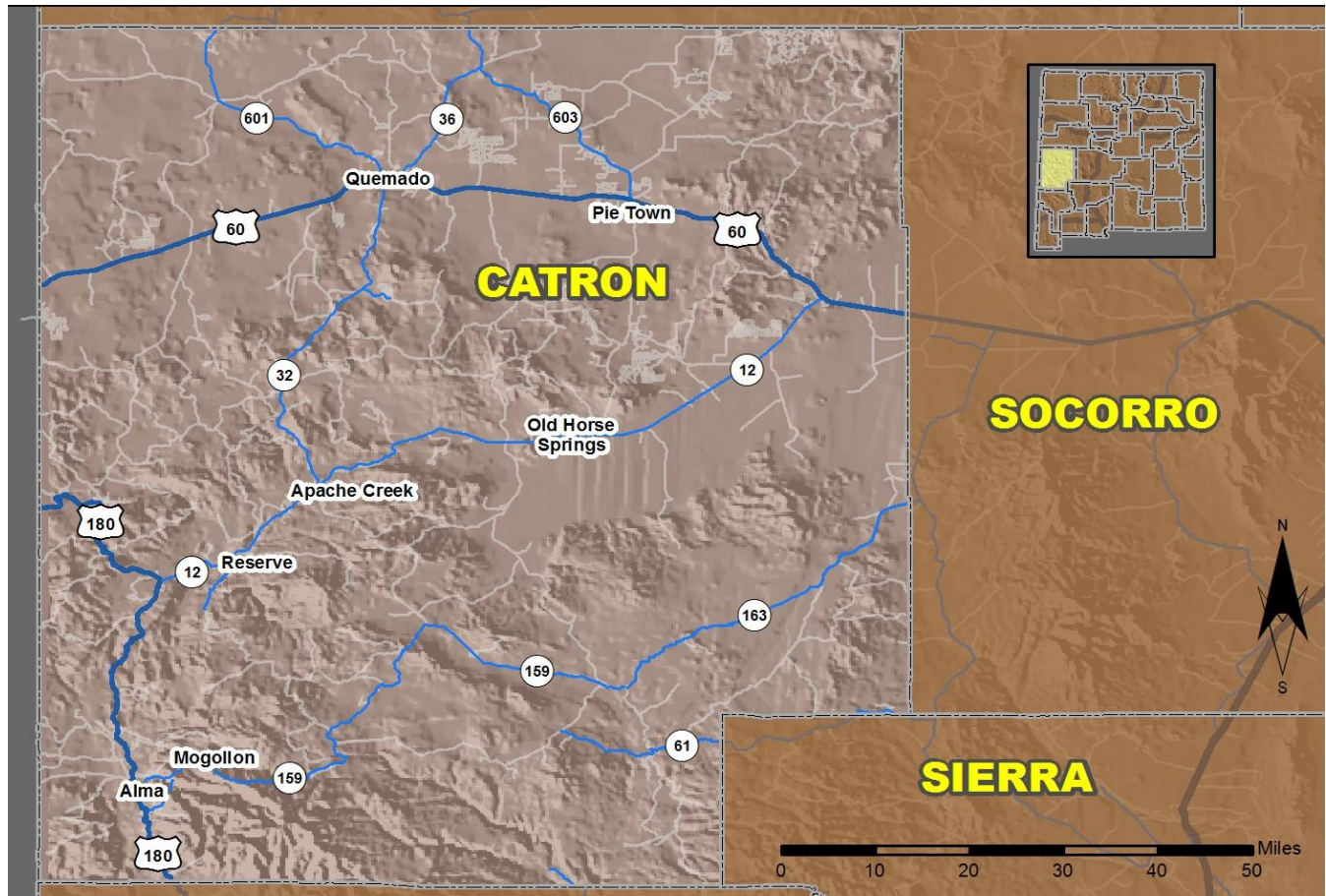


# 2018 Community Report

## Catron County



Produced for the New Mexico Department of Transportation,  
Traffic Safety Division, Traffic Records Bureau,  
Under Contract 6093 by the University of New Mexico,  
Geospatial and Population Studies, Traffic Research Unit

Distributed in compliance with New Mexico Statute 66-7-214  
as a reference source regarding New Mexico traffic crashes

For the purposes of this report, data are compiled by the University of New Mexico, Geospatial and Population Studies, Traffic Research Unit (TRU), on behalf of the New Mexico Department of Transportation (NMDOT). Data in this report may differ from that in other data sources, such as the Federal Fatality Analysis Reporting System (FARS), due to the timing of publications and rules for how data are compiled and maintained in Federal vs. State databases. If you have questions regarding this report, please contact the Traffic Safety Division at 505-827-0427.

<https://gps.unm.edu/tru/crash-reports/community-reports>

## Definitions

---

**Aggravated DWI** – A driver arrested for 1) driving with a BAC of 0.16 or higher, 2) driving under the influence of alcohol or drugs and causing bodily injury to a human being as a result, or 3) driving under the influence of alcohol or drugs and refusing to submit to a BAC test at the time of arrest for DWI.

**Alcohol-involved Crash** – A crash for which the Uniform Crash Report indicated that 1) a DWI citation was issued, 2) alcohol was a contributing factor, or 3) a person in control of a vehicle (including a pedestrian or pedalcyclist) was suspected of being under the influence of alcohol.

**Alcohol-involved Driver** – A person in control of a vehicle who was cited for DWI or indicated on the Uniform Crash Report as being either suspected or determined by testing to be under the influence of alcohol. There can be multiple alcohol-involved drivers in a single alcohol-involved crash.

**Crash** – A reported incident on a public roadway involving one or more motor vehicles that resulted in death, personal injury, or at least \$500 in property damage. Crashes on private property (such as a parking lot) are not included.

**DWI Arrest (Citation)** – In this report, a DWI arrest (a.k.a. a DWI citation) is a driver arrested for either DWI or aggravated DWI. New Mexico’s legal limit for presumption of driving while intoxicated (DWI) is 0.08 for non-commercial drivers older than 21 years of age, 0.04 for commercial vehicle drivers, and 0.02 for drivers younger than 21 years of age.

**DWI Conviction** – A driver convicted of driving under the intoxicating influence of alcohol, narcotics, or pathogenic drugs, including aggravated DWI.

**Fatal Crash** – A crash in which at least one person was killed. More than one person can be killed in a single fatal crash.

**Fatalities** – The number of people killed in a crash. The terms “killed” and “deaths” are synonymous with “fatalities.” A fatality is crash-related if it occurs at the time of the crash or if the person(s) involved in the crash dies within 30 days.

**Injury Crash** – A reported crash in which at least one person was injured. Injury crashes involve at least one suspected serious injury (Class A), suspected minor injury (Class B), or possible injury (Class C). Fatal crashes are not included.

**Missing Data** – An indication that the applicable field on the UCR form was left blank or contained an invalid code. Starting with crashes that occurred in 2012, improvements in the identification of missing data in the NMDOT crash database led to an increase in the reported amount of missing data.

**Pedalcyclist** – A person riding a mechanism of transport that is powered solely by pedals (a.k.a. bicyclist).

**Pedestrian** – A person on foot, walking, running, jogging, hiking, sitting or lying down who is involved in a motor vehicle traffic crash.

## Sources

---

**Crash Data** – New Mexico Department of Transportation, Traffic Safety Division, Traffic Records Bureau, Traffic Crash Database, as of the report date below. Crash data are compiled using NMDOT Uniform Crash Reports (UCR), submitted by law enforcement agencies in the state, for any incident on a public roadway involving one or more motor vehicles that resulted in death, injury, or at least \$500 in property damage. These reports are processed by the NMDOT Traffic Records Bureau and analyzed by the University of New Mexico, Geospatial and Population Studies, Traffic Research Unit (TRU).

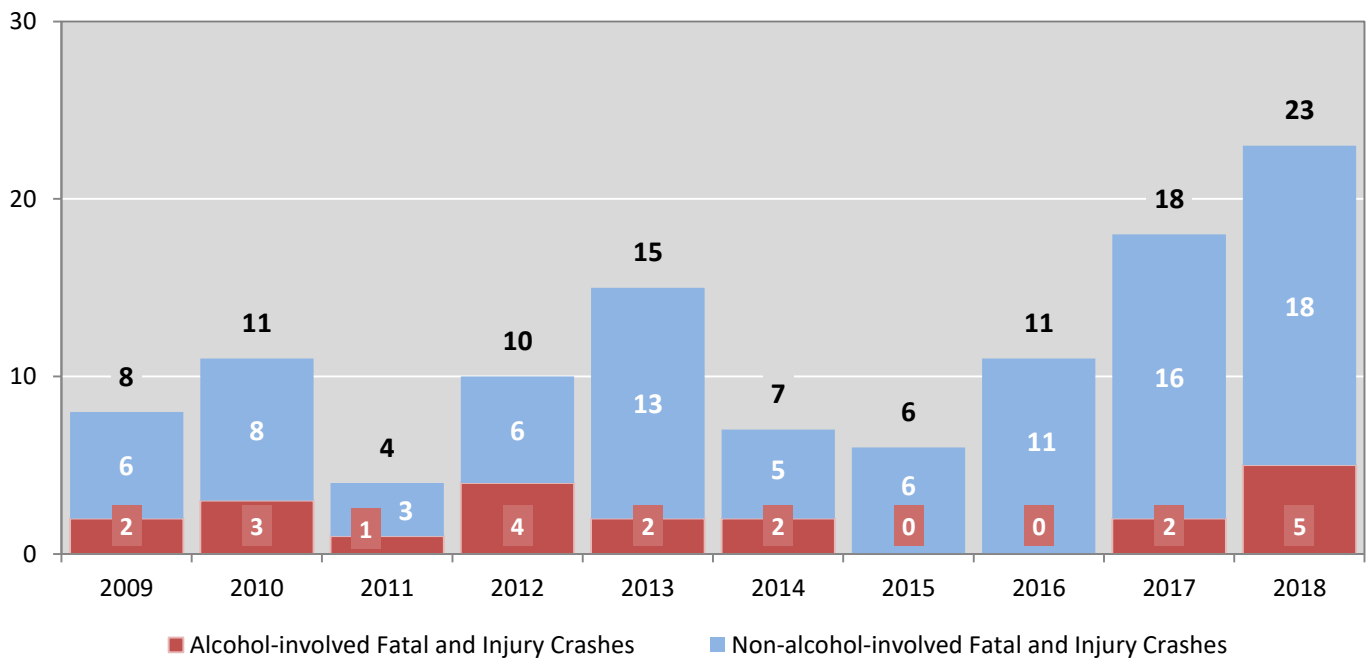
**DWI Citation Tracking System (CTS)** – New Mexico Taxation and Revenue Department (NM TRD), Motor Vehicle Division (MVD), DWI Citation Tracking System (CTS), as of July 2019. Repeat offenders are identified by the combination of account key, arrest date, and citation number. County data are based upon the county where the arrest took place. City data are based upon the city where the offender resides.

**Urban Areas** – Areas defined by the New Mexico Department of Transportation, Asset Management and Planning, 2010 U.S. Census Urbanized Area Boundaries, NMDOT-Adjusted, and U.S. Census Urban Clusters, August 21, 2013. Urban areas for crash years 2013-2017 include a 1/2 mile buffer extending out from those urban boundaries. In crashes before 2013, “urban” was defined as a town or city with a population of at least 2,500 people.

**Table 1: Total Crashes and Alcohol-involved Crashes by  
Crash Severity in Catron County, 2009-2018**

Year	Total Crashes				Alcohol-involved Crashes			
	Fatal	Injury	Property Damage Only	Total	Fatal	Injury	Property Damage Only	Total
2009	2	6	17	25	0	2	0	2
2010	1	10	21	32	1	2	0	3
2011	1	3	18	22	1	0	0	1
2012	2	8	34	44	2	2	0	4
2013	5	10	13	28	2	0	0	2
2014	1	6	6	13	1	1	0	2
2015	0	6	31	37	0	0	0	0
2016	0	11	49	60	0	0	0	0
2017	1	17	37	55	0	2	0	2
2018	6	17	37	60	5	0	0	5

**Figure 1: Alcohol-involved Fatal and Injury Crashes Compared with  
Non-alcohol-involved Fatal and Injury Crashes in Catron County, 2009-2018**



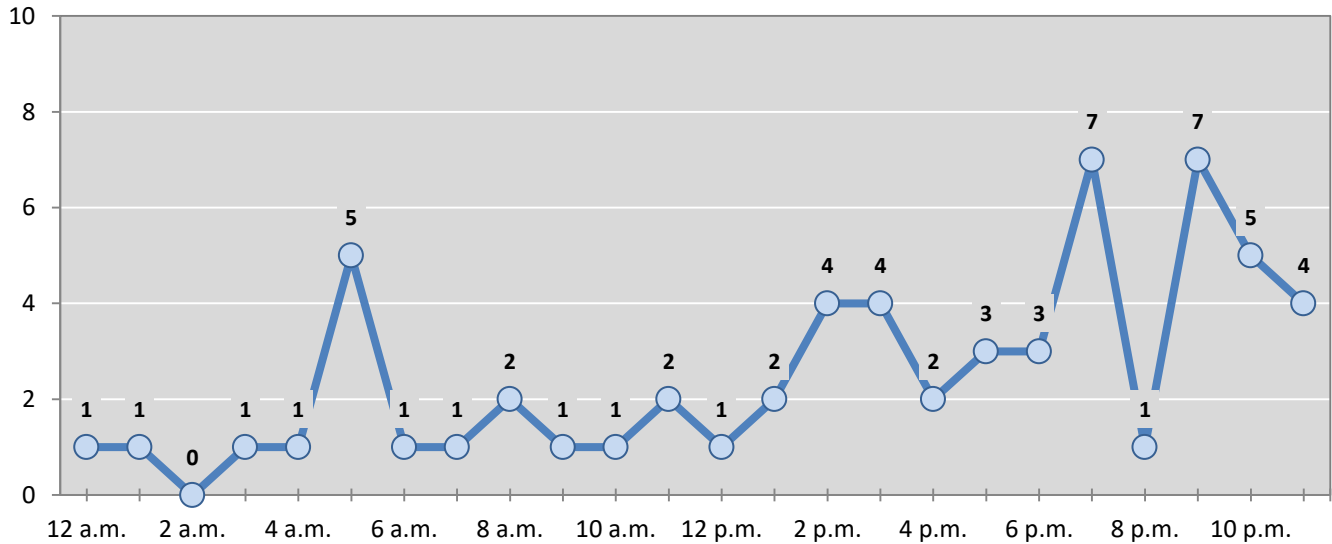
**Table 2: Crashes by Month in Catron County, 2014-2018**

Month	Crashes					5-Year Average
	2014	2015	2016	2017	2018	
January	3	4	2	2	6	3
February	1	3	2	6	2	3
March	2	3	4	2	6	3
April	0	3	6	7	1	3
May	1	6	6	2	8	5
June	1	2	10	5	4	4
July	1	4	4	6	11	5
August	1	3	4	3	6	3
September	0	3	4	6	4	3
October	1	2	6	7	6	4
November	1	2	5	7	3	4
December	1	2	7	2	3	3
<b>Total Crashes</b>	<b>13</b>	<b>37</b>	<b>60</b>	<b>55</b>	<b>60</b>	<b>45</b>

**Table 3: Alcohol-involved Crashes by Month in Catron County, 2014-2018**

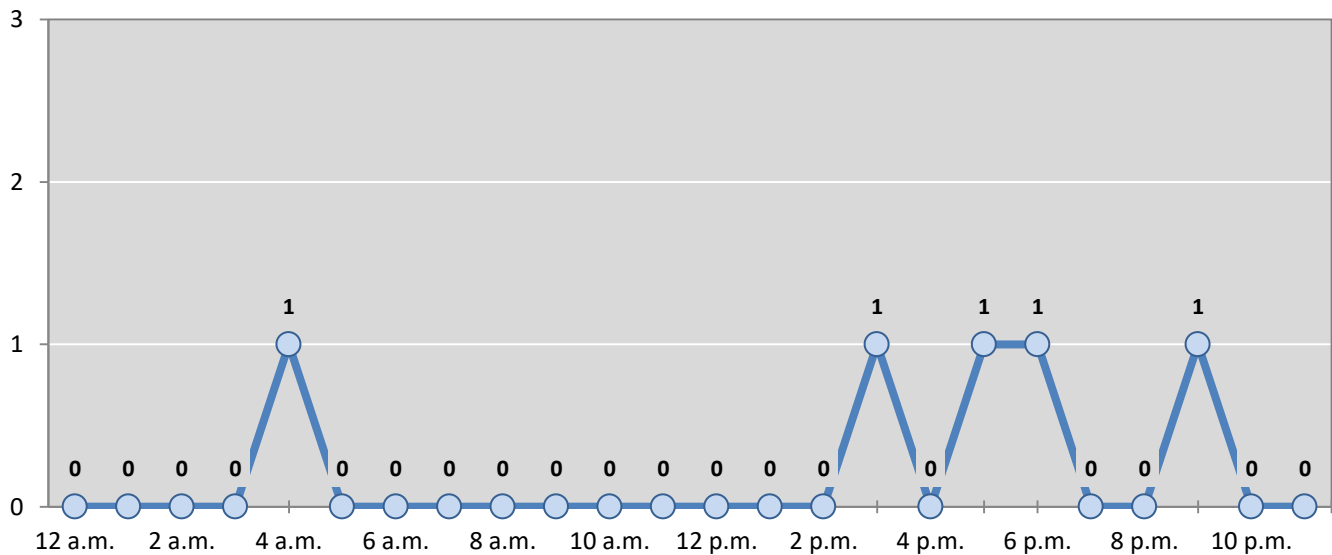
Month	Alcohol-involved Crashes					5-Year Average
	2014	2015	2016	2017	2018	
January	0	0	0	0	1	0
February	0	0	0	1	0	0
March	1	0	0	0	0	0
April	0	0	0	0	0	0
May	1	0	0	0	1	0
June	0	0	0	0	0	0
July	0	0	0	0	1	0
August	0	0	0	0	0	0
September	0	0	0	0	1	0
October	0	0	0	0	1	0
November	0	0	0	0	0	0
December	0	0	0	1	0	0
<b>Total Crashes</b>	<b>2</b>	<b>0</b>	<b>0</b>	<b>2</b>	<b>5</b>	<b>2</b>

**Figure 2: Crashes by Hour in Catron County, 2018**



\* In 2018, Catron County had 0 crashes for which hour data were missing.

**Figure 3: Alcohol-involved Crashes by Hour in Catron County, 2018**



\* In 2018, Catron County had 0 alcohol-involved crashes for which hour data were missing.

**Table 4: Alcohol-involved Crashes by Day of Week in Catron County, 2014-2018**

Day of Week	Alcohol-involved Crashes					5-Year Average
	2014	2015	2016	2017	2018	
Sunday	0	0	0	0	1	0
Monday	0	0	0	0	1	0
Tuesday	0	0	0	0	0	0
Wednesday	0	0	0	0	1	0
Thursday	0	0	0	0	1	0
Friday	1	0	0	0	1	0
Saturday	1	0	0	2	0	1
<b>Total Crashes</b>	<b>2</b>	<b>0</b>	<b>0</b>	<b>2</b>	<b>5</b>	<b>2</b>

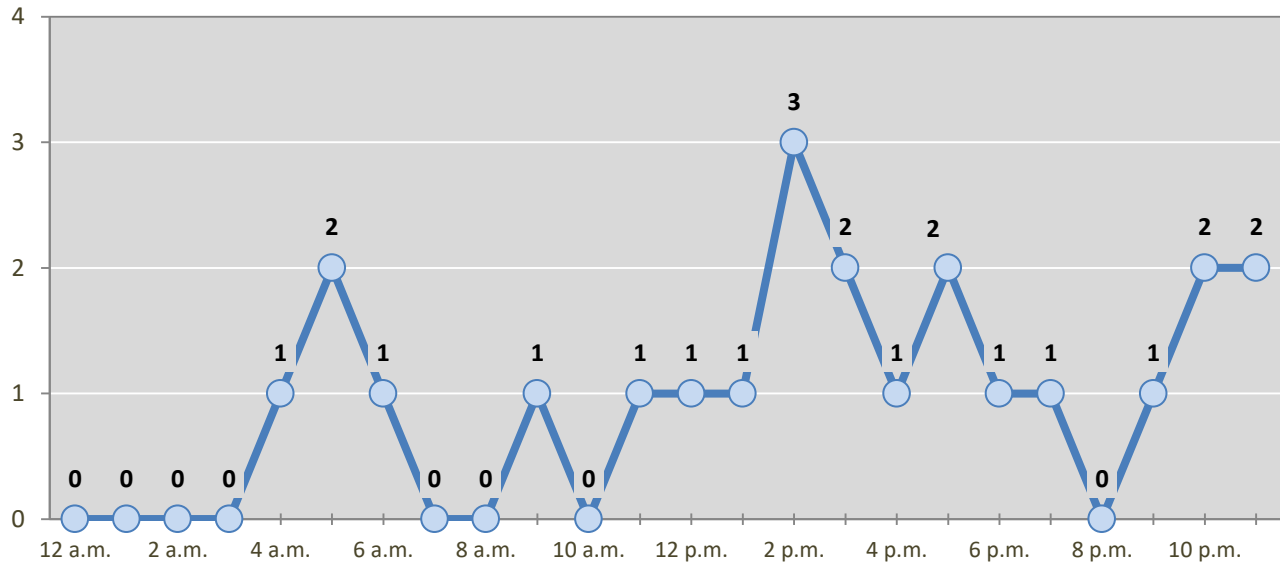
**Table 5: Fatal and Injury Crashes by Day of Week in Catron County, 2014-2018**

Day of Week	Fatal and Injury Crashes					5-Year Average
	2014	2015	2016	2017	2018	
Sunday	0	1	1	1	4	1
Monday	0	0	0	1	2	1
Tuesday	1	0	4	0	2	1
Wednesday	1	0	2	4	2	2
Thursday	1	0	2	5	7	3
Friday	3	3	0	2	3	2
Saturday	1	2	2	5	3	3
<b>Total Crashes</b>	<b>7</b>	<b>6</b>	<b>11</b>	<b>18</b>	<b>23</b>	<b>13</b>

**Table 6: Pedestrian and Pedalcyclist Crashes by Day of Week in Catron County, 2014-2018**

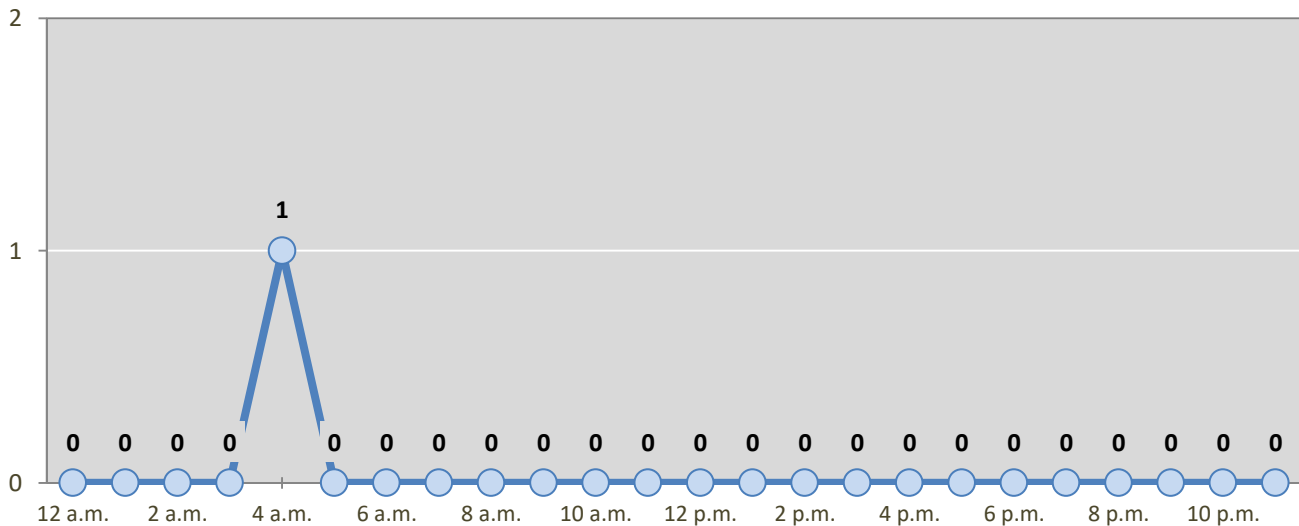
Day of Week	Pedestrian and Pedalcyclist Crashes					5-Year Average
	2014	2015	2016	2017	2018	
Sunday	0	0	0	0	0	0
Monday	0	0	0	0	0	0
Tuesday	0	0	0	0	0	0
Wednesday	0	0	0	0	0	0
Thursday	0	0	0	0	1	0
Friday	0	0	0	0	0	0
Saturday	0	0	0	0	0	0
<b>Total Crashes</b>	<b>0</b>	<b>0</b>	<b>0</b>	<b>0</b>	<b>1</b>	<b>0</b>

**Figure 4: Fatal and Injury Crashes by Hour in Catron County, 2018**



\* In 2018, Catron County had 0 crashes for which hour data were missing.

**Figure 5: Pedestrian and Pedalcyclist Crashes by Hour in Catron County, 2018**



\* In 2018, Catron County had 0 crashes for which hour data were missing.

**Table 7: Severity of Injuries to People in Crashes by Rural and Urban Location in Catron County, 2018**

Urban and Rural Locations by Alcohol-involvement	People in Crashes by Severity of Injuries					Total People
	Fatalities (Class K)	Suspected Serious Injuries (Class A)	Suspected Minor Injuries (Class B)	Possible Injuries (Class C)	No Apparent Injuries (Class O)	
<b>People in Alcohol-involved Crashes</b>	5	0	0	0	4	9
Urban	0	0	0	0	0	0
Rural Non-Interstate	5	0	0	0	4	9
Rural Interstate	0	0	0	0	0	0
<b>People in Crashes</b>	6	4	9	5	79	103
Urban	0	0	0	0	0	0
Rural Non-Interstate	6	4	9	5	79	103
Rural Interstate	0	0	0	0	0	0
<b>Percent in Alcohol-involved Crashes</b>	<b>83%</b>	<b>0%</b>	<b>0%</b>	<b>0%</b>	<b>5%</b>	<b>9%</b>

**Table 8: Total Crashes by Roadway System and Crash Severity in Catron County, 2014-2018**

Crash Severity by System	Crashes by Year					5-Year Average
	2014	2015	2016	2017	2018	
<b>Total Rural Interstate</b>	0	0	0	0	0	0
Fatal Crash	0	0	0	0	0	0
Injury Crash	0	0	0	0	0	0
Property Damage Only Crash	0	0	0	0	0	0
<b>Total Rural Non-Interstate</b>	13	37	60	55	60	45
Fatal Crash	1	0	0	1	6	2
Injury Crash	6	6	11	17	17	11
Property Damage Only Crash	6	31	49	37	37	32
<b>Total Urban</b>	0	0	0	0	0	0
Fatal Crash	0	0	0	0	0	0
Injury Crash	0	0	0	0	0	0
Property Damage Only Crash	0	0	0	0	0	0



**Table 9: Total Crashes by Crash Classification in Catron County, 2014-2018**

Crash Classification	Total Crashes by Year					5-Year Average
	2014	2015	2016	2017	2018	
Animal	4	11	32	27	25	20
Fixed Object	3	10	6	4	9	6
Other (Non-Collision)	0	2	2	1	1	1
Other (Object)	1	1	1	3	3	2
Other Vehicle	0	3	7	6	6	4
Overturn/Rollover	3	6	10	10	12	8
Parked Vehicle	0	1	1	1	0	1
Pedalcyclist	0	0	0	0	0	0
Pedestrian	0	0	0	0	1	0
Railroad Train	2	0	0	0	0	0
Rollover	0	3	1	3	1	2
Vehicle on Other Road	0	0	0	0	0	0
Missing Data	0	0	0	0	2	0
<b>Total Crashes</b>	<b>13</b>	<b>37</b>	<b>60</b>	<b>55</b>	<b>60</b>	<b>45</b>

**Table 10: Vehicles in Crashes by Vehicle Type in Catron County, 2014-2018**

Vehicle Type <sup>1</sup>	Vehicles in Crashes by Vehicle Type					5-Year Average
	2014	2015	2016	2017	2018	
Bus	0	0	0	0	0	0
Motorcycle	0	2	3	2	5	2
Passenger	4	11	21	20	21	15
Pedalcyclist	0	0	0	0	0	0
Pedestrian	0	0	0	0	1	0
Pickup	5	16	26	22	20	18
Semi	1	3	5	2	4	3
Van/SUV/4WD	2	9	11	16	16	11
Other Vehicle	1	0	1	0	0	0
Missing Data	1	0	1	0	1	1
<b>Total Vehicles</b>	<b>14</b>	<b>41</b>	<b>68</b>	<b>62</b>	<b>68</b>	<b>51</b>

<sup>1</sup> Pedestrians and pedalcyclists are counted as non-motorized vehicles, when involved in a crash with a motor vehicle. See Page 17 for data on drivers of non-motorized vehicles in crashes (i.e. pedestrians and pedalcyclists).

**Table 11: Motor Vehicle Drivers in Crashes by Vehicle Type and Age Group in Catron County, 2018**

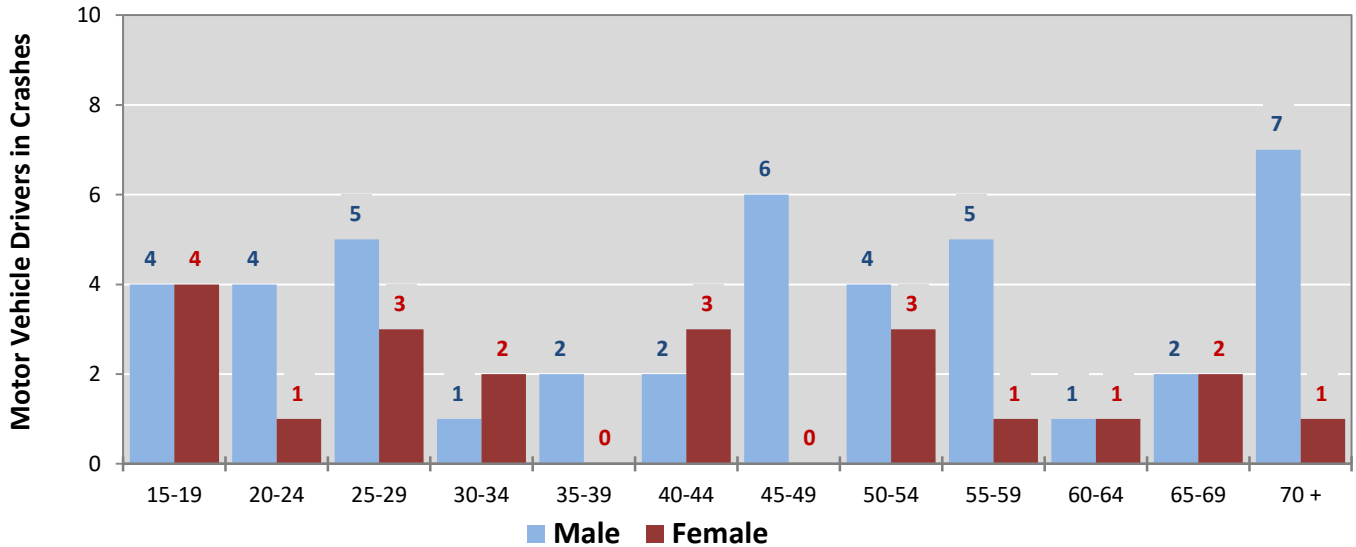
Age Groups	Motor Vehicle <sup>1</sup> Drivers by Vehicle Type and Age Group								Total Drivers
	Bus	Motor-cycle	Passenger	Pickup	Semi	Van 4WD SUV	Other Vehicle	Missing Data	
15-19	0	1	4	3	0	0	0	0	8
20-24	0	0	3	1	0	1	0	0	5
25-29	0	0	4	1	0	3	0	0	8
30-34	0	1	0	0	0	2	0	0	3
35-39	0	0	0	2	0	0	0	0	2
40-44	0	0	3	1	0	1	0	0	5
45-49	0	0	1	2	0	2	0	1	6
50-54	0	1	2	3	0	1	0	0	7
55-59	0	1	0	1	3	1	0	0	6
60-64	0	0	0	1	0	1	0	0	2
65-69	0	0	0	2	0	2	0	0	4
70 +	0	1	2	3	0	2	0	0	8
Missing Data	0	0	2	0	1	0	0	0	3
<b>Total Drivers</b>	<b>0</b>	<b>5</b>	<b>21</b>	<b>20</b>	<b>4</b>	<b>16</b>	<b>0</b>	<b>1</b>	<b>67</b>

**Table 12: Alcohol-involved Motor Vehicle Drivers in Crashes by Vehicle Type and Age Group in Catron County, 2018**

Age Groups	Alcohol-involved Motor Vehicle <sup>1</sup> Drivers by Vehicle Type and Age Group								Total Drivers
	Bus	Motor-cycle	Passenger	Pickup	Semi	Van 4WD SUV	Other Vehicle	Missing Data	
15-19	0	0	0	0	0	0	0	0	0
20-24	0	0	0	0	0	0	0	0	0
25-29	0	0	0	0	0	2	0	0	2
30-34	0	0	0	0	0	0	0	0	0
35-39	0	0	0	0	0	0	0	0	0
40-44	0	0	0	0	0	0	0	0	0
45-49	0	0	0	0	0	0	0	0	0
50-54	0	0	0	0	0	0	0	0	0
55-59	0	1	0	0	0	0	0	0	1
60-64	0	0	0	0	0	1	0	0	1
65-69	0	0	0	0	0	0	0	0	0
70 +	0	0	0	0	0	0	0	0	0
Missing Data	0	0	0	0	0	0	0	0	0
<b>Total Drivers</b>	<b>0</b>	<b>1</b>	<b>0</b>	<b>0</b>	<b>0</b>	<b>3</b>	<b>0</b>	<b>0</b>	<b>4</b>

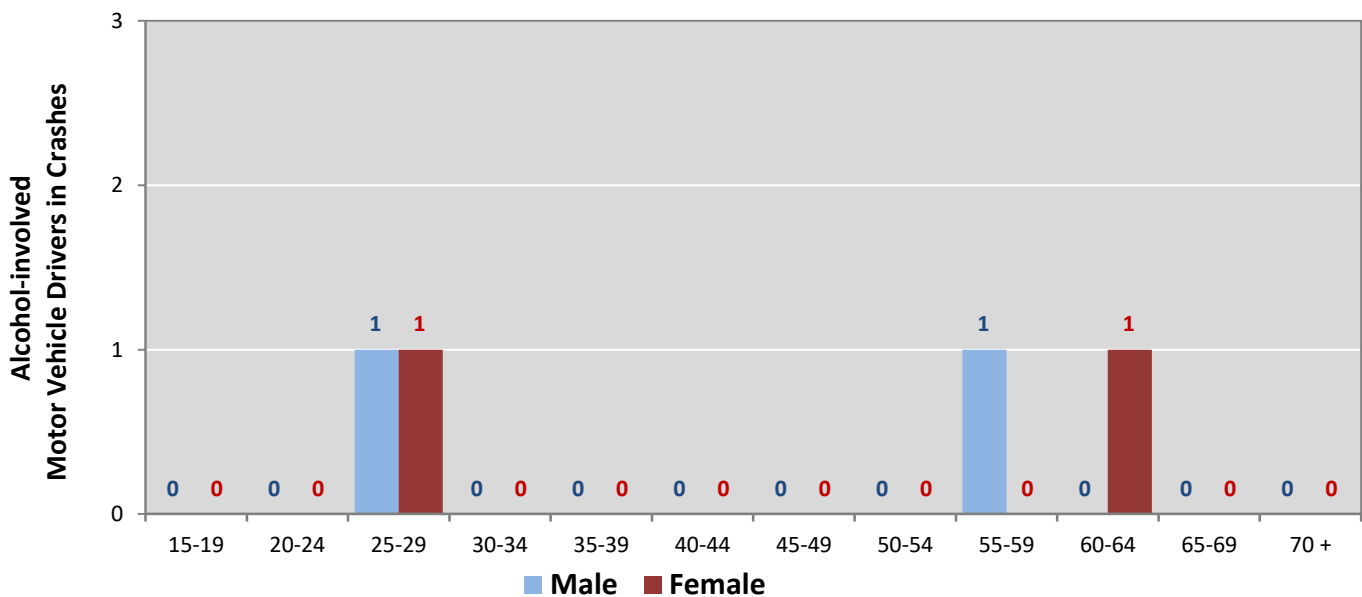
<sup>1</sup> See Page 17 for data on drivers of non-motorized vehicles in crashes (i.e. pedestrians and pedalcyclists).

**Figure 6: Motor Vehicle Drivers in Crashes by Age Group and Sex in Catron County, 2018**



\* In 2018, Catron County had 3 drivers in crashes for which age or sex data were missing.

**Figure 7: Alcohol-involved Motor Vehicle Drivers in Crashes by Age Group and Sex in Catron County, 2018**



\* In 2018, Catron County had 0 drivers in crashes for which age or sex data were missing.

**Table 13: Alcohol-involved Motor Vehicle Drivers Under 21 (Ages 15-20) in Crashes in Catron County, 2014-2018**

Age <sup>1</sup>	Year					5-Year Total
	2014	2015	2016	2017	2018	
15	0	0	0	0	0	0
16	0	0	0	0	0	0
17	0	0	0	0	0	0
18	0	0	0	0	0	0
19	0	0	0	0	0	0
20	0	0	0	0	0	0
<b>Total Drivers</b>	<b>0</b>	<b>0</b>	<b>0</b>	<b>0</b>	<b>0</b>	<b>0</b>

**Table 14: Motor Vehicle Drivers Under 21 (Ages 15-20) in Crashes by Age, Sex and Alcohol-involvement in Catron County, 2018**

Age <sup>1</sup>	Total Drivers				Alcohol-involved Drivers			
	Sex		Total Drivers	Percent of Total	Sex		Total Drivers	Percent of Total
	Male	Female			Male	Female		
15	1	0	1	11%	0	0	0	0%
16	1	0	1	11%	0	0	0	0%
17	0	1	1	11%	0	0	0	0%
18	2	3	5	56%	0	0	0	0%
19	0	0	0	0%	0	0	0	0%
20	0	1	1	11%	0	0	0	0%
<b>Total Drivers</b>	<b>4</b>	<b>5</b>	<b>9</b>	<b>100%</b>	<b>0</b>	<b>0</b>	<b>0</b>	<b>0%</b>

<sup>1</sup> For analysis of drivers under age 21, when the driver age or sex are not identified on the crash report (typically hit-and-run drivers), the driver data are considered unreliable and are excluded from the analysis.

**Table 15: Frequency of Contributing Factors in Crashes  
by Crash Severity in Catron County, 2018**

Contributing Factors	Frequency of Contributing Factor <sup>1</sup> by Crash Severity			
	Frequency in Fatal Crashes	Frequency in Injury Crashes	Frequency in Property Damage Only Crashes	Frequency in All Crashes
<b>Human</b>	<b>18</b>	<b>23</b>	<b>12</b>	<b>53</b>
Driver Inattention	2	9	3	14
Excessive Speed	2	6	1	9
Speed Too Fast for Conditions	2	2	1	5
Alcohol Involved	5	0	0	5
Other Improper Driving	1	2	1	4
Vehicle Skidded Before Brake	1	1	2	4
Drove Left Of Center	1	2	0	3
Avoid No Contact - Other	0	0	2	2
Drug Involved	2	0	0	2
Avoid No Contact - Vehicle	0	0	1	1
Cell Phone	1	0	0	1
Failed to Yield Right of Way	0	0	1	1
Improper Overtaking	0	1	0	1
Pedestrian Error	1	0	0	1
Disregarded Traffic Signal	0	0	0	0
Driverless Moving Vehicle	0	0	0	0
Failed to Yield to Emergency Vehicle	0	0	0	0
Failed to Yield to Police Vehicle	0	0	0	0
Following Too Closely	0	0	0	0
High Speed Pursuit	0	0	0	0
Improper Backing	0	0	0	0
Improper Lane Change	0	0	0	0
Made Improper Turn	0	0	0	0
Passed Stop Sign	0	0	0	0
Texting	0	0	0	0
<b>Vehicle</b>	<b>0</b>	<b>0</b>	<b>0</b>	<b>0</b>
Defective Steering	0	0	0	0
Defective Tires	0	0	0	0
Inadequate Brakes	0	0	0	0
Other Mechanical Defect	0	0	0	0
<b>Environment</b>	<b>0</b>	<b>0</b>	<b>1</b>	<b>1</b>
Road Defect	0	0	1	1
Low Visibility Due to Smoke	0	0	0	0
Traffic Control Not Functioning	0	0	0	0
<b>Other</b>	<b>2</b>	<b>2</b>	<b>24</b>	<b>28</b>
Other - No Driver Error	1	1	17	19
None	1	1	7	9

<sup>1</sup> Multiple contributing factors may be reported for any vehicle in a crash.

**Table 16: People in Crashes by Crash Classification and Severity of Injuries in Catron County, 2018**

Crash Classification	People in Crashes by Severity of Injuries					Total People
	Fatalities (Class K)	Suspected Serious Injuries (Class A)	Suspected Minor Injuries (Class B)	Possible Injuries (Class C)	No Apparent Injuries (Class O)	
Animal	1	0	0	1	40	42
Fixed Object	0	1	2	0	8	11
Other (Non-Collision)	0	0	1	0	0	1
Other (Object)	0	0	1	1	2	4
Other Vehicle	0	1	0	1	18	20
Overturn/Rollover	3	1	5	1	7	17
Parked Vehicle	0	0	0	0	0	0
Pedalcyclist	0	0	0	0	0	0
Pedestrian	1	0	0	0	1	2
Railroad Train	0	0	0	0	0	0
Rollover	1	0	0	0	3	4
Vehicle on Other Road	0	0	0	0	0	0
Missing Data	0	1	0	1	0	2
<b>Total People</b>	<b>6</b>	<b>4</b>	<b>9</b>	<b>5</b>	<b>79</b>	<b>103</b>

**Table 17: Killed or Injured Unbelted People in Crashes by Sex and Age Group in Catron County, 2018**

Age Groups	Unbelted People Killed or Injured <sup>1,2</sup>				Total People
	Male	Percent of Male	Female	Percent of Female	
0-4	0	0%	0	0%	0
5-9	0	0%	0	0%	0
10-14	0	0%	0	0%	0
15-19	0	0%	0	0%	0
20-24	0	0%	0	0%	0
25-29	1	100%	1	50%	2
30-34	0	0%	0	0%	0
35-39	0	0%	0	0%	0
40-44	0	0%	0	0%	0
45-49	0	0%	0	0%	0
50-54	0	0%	0	0%	0
55-59	0	0%	0	0%	0
60-64	0	0%	1	50%	1
65-69	0	0%	0	0%	0
70 +	0	0%	0	0%	0
Missing Data	0	0%	0	0%	0
<b>Total People</b>	<b>1</b>	<b>100%</b>	<b>2</b>	<b>100%</b>	<b>3</b>

<sup>1</sup> People injured are in one of three categories: suspected serious injury, suspected minor injury, or possible injury.

<sup>2</sup> Excludes people in or on buses, heavy trucks, motorcycles, or ATVs.

**Figure 8: Seatbelt Use by People in Crashes with Fatal or Suspected Serious Injuries in Catron County, 2014-2018**

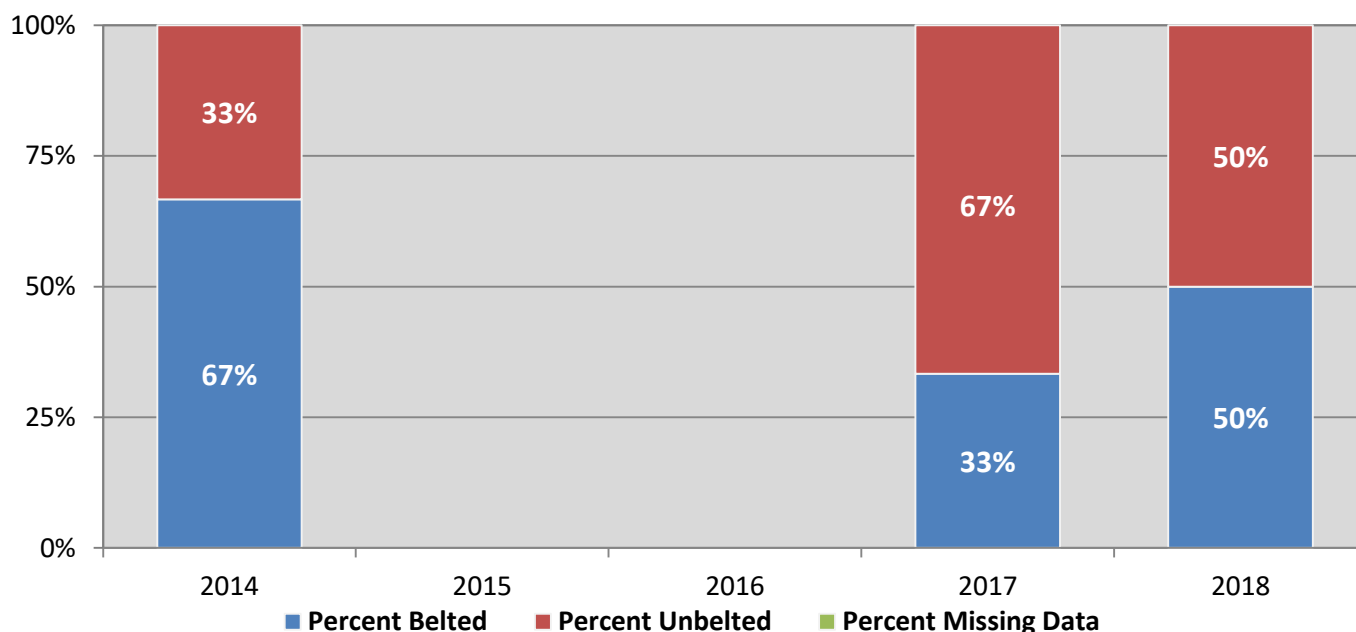
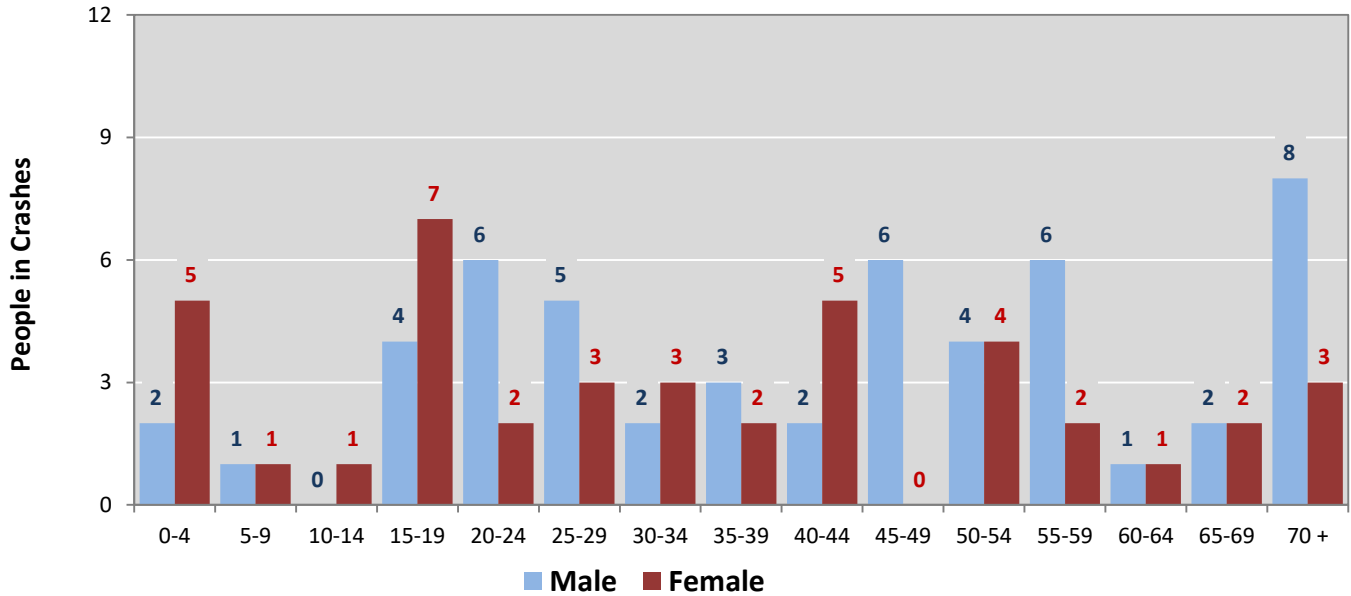
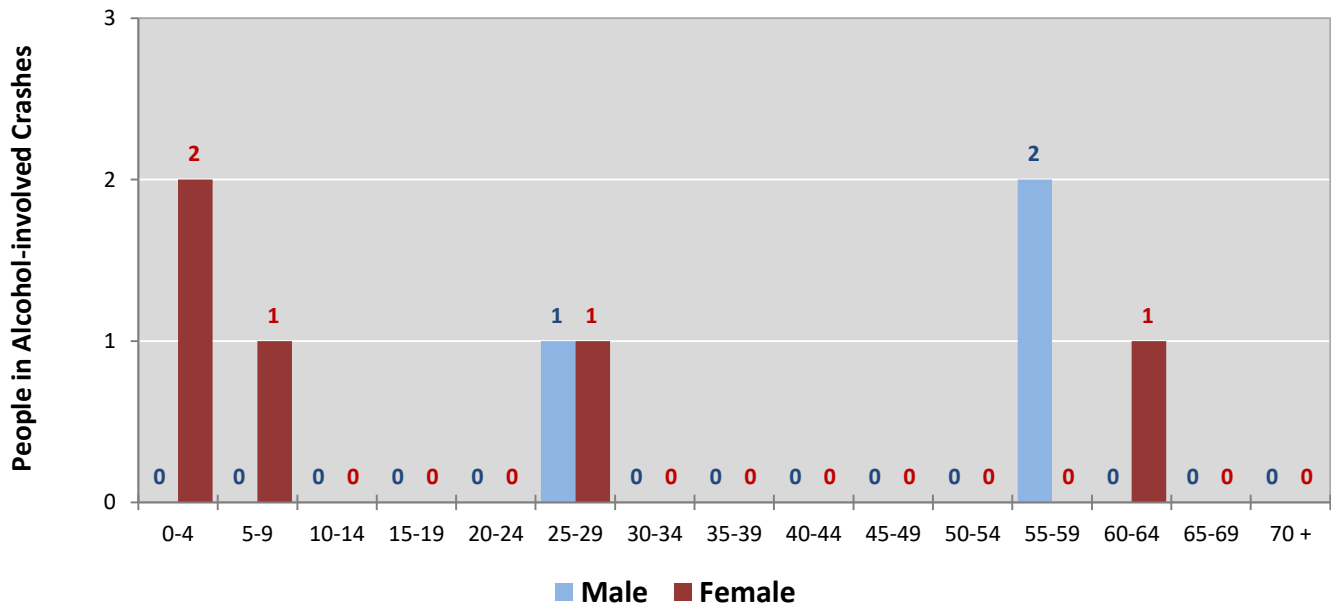


Figure 9: People in Crashes by Age Group and Sex in Catron County, 2018



\* In 2018, Catron County had 10 people in crashes for which age or sex data were missing.

Figure 10: People in Alcohol-involved Crashes by Age Group and Sex in Catron County, 2018



\* In 2018, Catron County had 1 people in alcohol-involved crashes for which age or sex data were missing.



**Table 18: Pedestrians and Pedalcyclists in Crashes by Age Group in  
Catron County, 2014-2018**

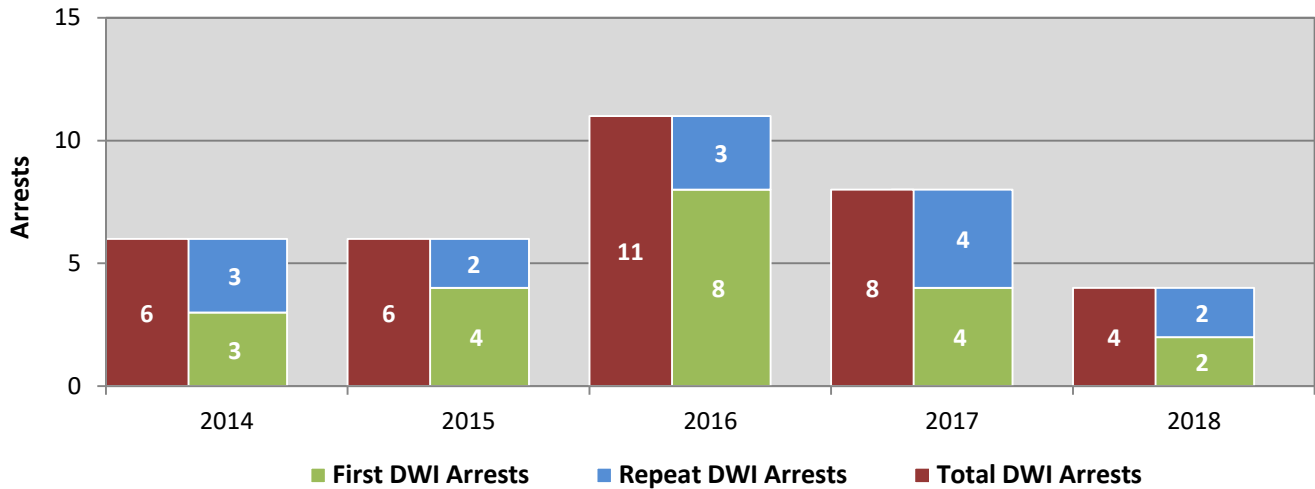
Age Groups	Pedestrians and Pedalcyclists <sup>1</sup> in Crashes					5-Year Total People
	2014	2015	2016	2017	2018	
0-4	0	0	0	0	0	0
5-9	0	0	0	0	0	0
10-14	0	0	0	0	0	0
15-19	0	0	0	0	0	0
20-24	0	0	0	0	0	0
25-29	0	0	0	0	0	0
30-34	0	0	0	0	0	0
35-39	0	0	0	0	0	0
40-44	0	0	0	0	0	0
45-49	0	0	0	0	0	0
50-54	0	0	0	0	0	0
55-59	0	0	0	0	1	1
60-64	0	0	0	0	0	0
65-69	0	0	0	0	0	0
70 +	0	0	0	0	0	0
Missing Data	0	0	0	0	0	0
<b>Total People</b>	<b>0</b>	<b>0</b>	<b>0</b>	<b>0</b>	<b>1</b>	<b>1</b>

**Table 19: Pedestrians and Pedalcyclists in Crashes by Alcohol Involvement  
and Severity of Injuries in Catron County, 2018**

Alcohol Involvement	Pedestrians and Pedalcyclists <sup>1</sup> in Crashes					Total People
	Fatalities (Class K)	Suspected Serious Injuries (Class A)	Suspected Minor Injuries (Class B)	Possible Injuries (Class C)	No Apparent Injury (Class O)	
<b>Total Pedalcyclists</b>	<b>0</b>	<b>0</b>	<b>0</b>	<b>0</b>	<b>0</b>	<b>0</b>
Involved	0	0	0	0	0	0
Not Involved	0	0	0	0	0	0
<b>Total Pedestrians</b>	<b>1</b>	<b>0</b>	<b>0</b>	<b>0</b>	<b>0</b>	<b>1</b>
Involved	1	0	0	0	0	1
Not Involved	0	0	0	0	0	0
<b>Total People</b>	<b>1</b>	<b>0</b>	<b>0</b>	<b>0</b>	<b>0</b>	<b>1</b>

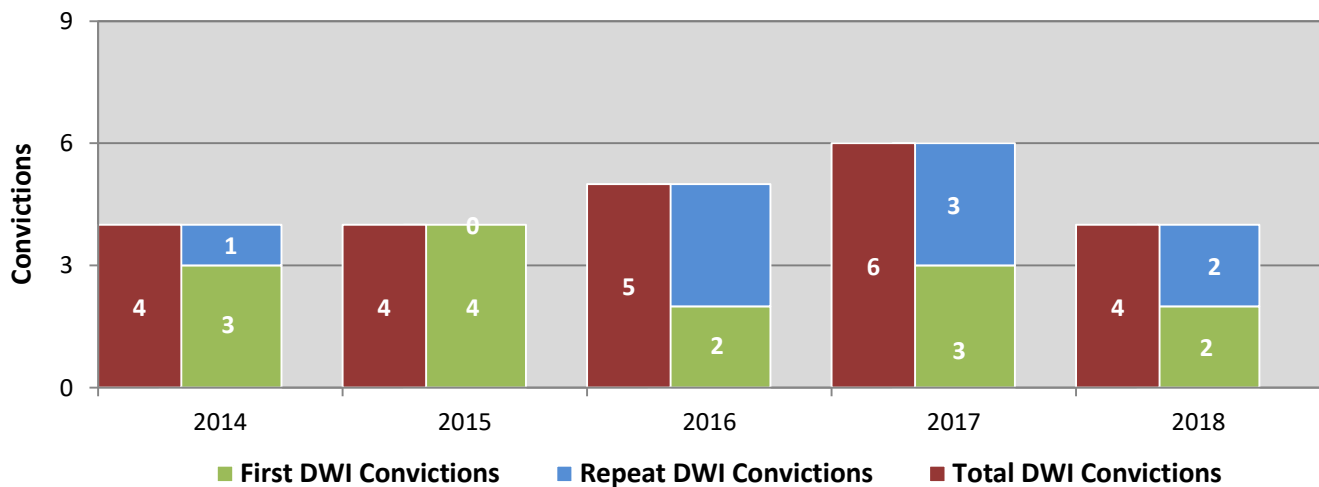
<sup>1</sup> Pedestrians and pedalcyclists are counted as non-motorized vehicles, when involved in a crash with a motor vehicle.

**Figure 11: DWI Arrests in Catron County,  
Showing First and Repeat DWI Arrests, 2014-2018**



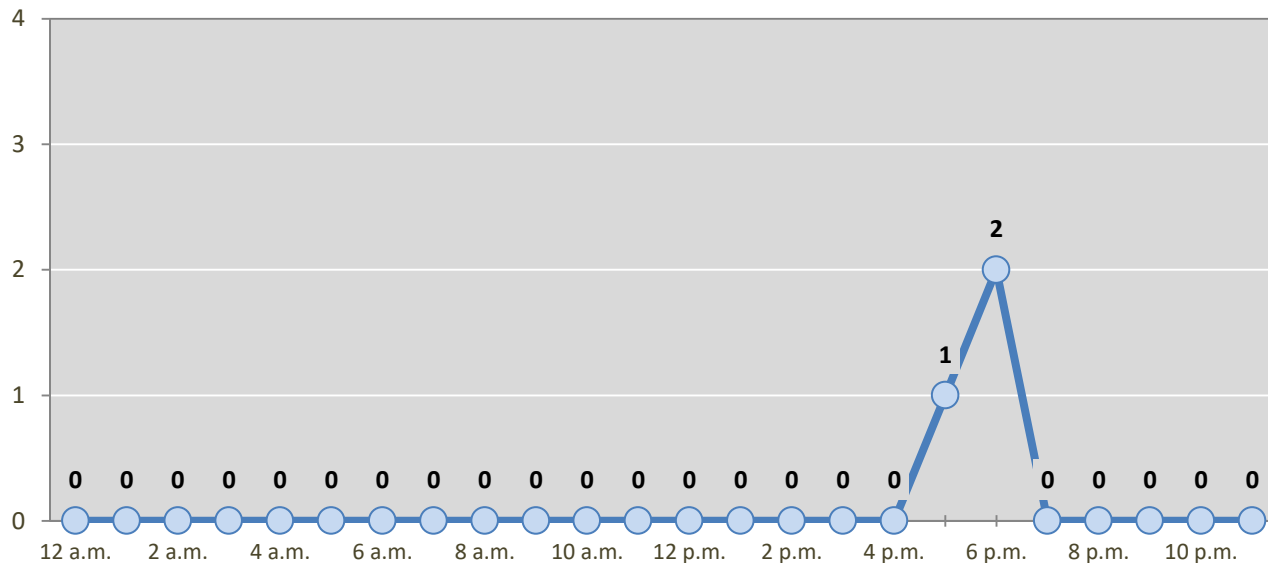
\*Values are based upon the year of the arrest.

**Figure 12: DWI Convictions in Catron County,  
Showing First and Repeat DWI Convictions, 2014-2018**



\*Values are based upon the year of the conviction.

**Figure 13: DWI Arrests by Hour in Catron County, 2018**



\* In 2018, Catron County had 1 arrests for which hour data were missing.

**Table 20: DWI Arrests by Day of Week in Catron County, 2014-2018**

Day of Week	Year					5-Year Average
	2014	2015	2016	2017	2018	
Sunday	1	2	0	1	1	1
Monday	1	0	2	0	0	1
Tuesday	0	2	1	0	0	1
Wednesday	0	1	1	0	2	1
Thursday	0	0	1	1	0	0
Friday	4	1	2	4	0	2
Saturday	0	0	4	2	1	1
<b>Total Arrests</b>	<b>6</b>	<b>6</b>	<b>11</b>	<b>8</b>	<b>4</b>	<b>7</b>

**Table 21: Driver First DWI Arrests by Age Group in Catron County, 2014-2018**

Age Groups	Driver First DWI Arrests <sup>1</sup>				
	2014	2015	2016	2017	2018
15-19	0	1	0	0	0
20-24	1	0	0	2	0
25-29	0	0	2	0	1
30-34	0	0	0	0	0
35-39	1	0	0	1	0
40-44	0	1	2	0	0
45-49	0	1	0	0	0
50-54	0	0	0	0	0
55-59	0	0	3	0	1
60-64	1	1	1	0	0
65-69	0	0	0	1	0
70 +	0	0	0	0	0
Missing Data	0	0	0	0	0
<b>Total Drivers</b>	<b>3</b>	<b>4</b>	<b>8</b>	<b>4</b>	<b>2</b>

<sup>1</sup>Values are based upon the year of the arrest.

**Table 22: Driver Repeat DWI Arrests by Age Group in Catron County, 2014-2018**

Age Groups	Driver Repeat DWI Arrests <sup>1</sup>				
	2014	2015	2016	2017	2018
15-19	0	0	0	0	0
20-24	0	0	0	0	0
25-29	0	0	0	0	1
30-34	1	0	1	0	1
35-39	1	1	1	0	0
40-44	0	0	0	1	0
45-49	0	0	0	0	0
50-54	0	0	0	1	0
55-59	0	0	0	2	0
60-64	1	1	0	0	0
65-69	0	0	0	0	0
70 +	0	0	1	0	0
Missing Data	0	0	0	0	0
<b>Total Drivers</b>	<b>3</b>	<b>2</b>	<b>3</b>	<b>4</b>	<b>2</b>

<sup>1</sup>Values are based upon the year of the arrest.

**Table 23: Driver First DWI Convictions by Age Group in Catron County, 2014-2018**

Age Groups	Driver First DWI Convictions <sup>1</sup>				
	2014	2015	2016	2017	2018
15-19	0	0	0	0	0
20-24	0	1	0	0	0
25-29	0	0	0	0	0
30-34	0	0	0	0	0
35-39	1	0	0	0	1
40-44	0	1	0	0	0
45-49	0	1	0	0	0
50-54	0	0	0	0	0
55-59	1	0	2	2	1
60-64	1	1	0	1	0
65-69	0	0	0	0	0
70 +	0	0	0	0	0
Missing Data	0	0	0	0	0
<b>Total Drivers</b>	<b>3</b>	<b>4</b>	<b>2</b>	<b>3</b>	<b>2</b>

<sup>1</sup> Values are based upon the year of the conviction.

**Table 24: Driver Repeat DWI Convictions by Age Group in Catron County, 2014-2018**

Age Groups	Driver Repeat DWI Convictions <sup>1</sup>				
	2014	2015	2016	2017	2018
15-19	0	0	0	0	0
20-24	0	0	0	0	0
25-29	0	0	0	0	0
30-34	0	0	2	0	1
35-39	1	0	0	1	0
40-44	0	0	0	0	0
45-49	0	0	0	0	0
50-54	0	0	0	1	0
55-59	0	0	0	0	1
60-64	0	0	1	0	0
65-69	0	0	0	0	0
70 +	0	0	0	1	0
Missing Data	0	0	0	0	0
<b>Total Drivers</b>	<b>1</b>	<b>0</b>	<b>3</b>	<b>3</b>	<b>2</b>

<sup>1</sup> Values are based upon the year of the conviction.

**Table 25: Court Disposition of DWI Arrests for the State and Catron County, 2018**

Court Disposition of DWI Arrest <sup>1</sup>	Catron County	Statewide	Percent of Statewide
Total DWI Arrests	4	10,205	<b>0.0%</b>
DWI Arrests Resulting in Convictions	3	4,641	<b>0.1%</b>
DWI Arrests Resulting in Dismissals <sup>2</sup>	1	880	<b>0.1%</b>
DWI Arrests Awaiting Disposition	0	4,684	<b>0.0%</b>

<sup>1</sup> These are the number of DWI arrests in 2018 and whether the case resulted in a conviction or dismissal, or is still awaiting court disposition, as reported in the NM MVD Citation Tracking System (CTS) as of July 2019.

<sup>2</sup> For this table, a very small number of "not guilty" rulings may be included in the category Dismissals.

**Table 26: Average Number of Days from Date of DWI Arrest  
Date of Court Disposition for the State and Catron County, 2018**

to

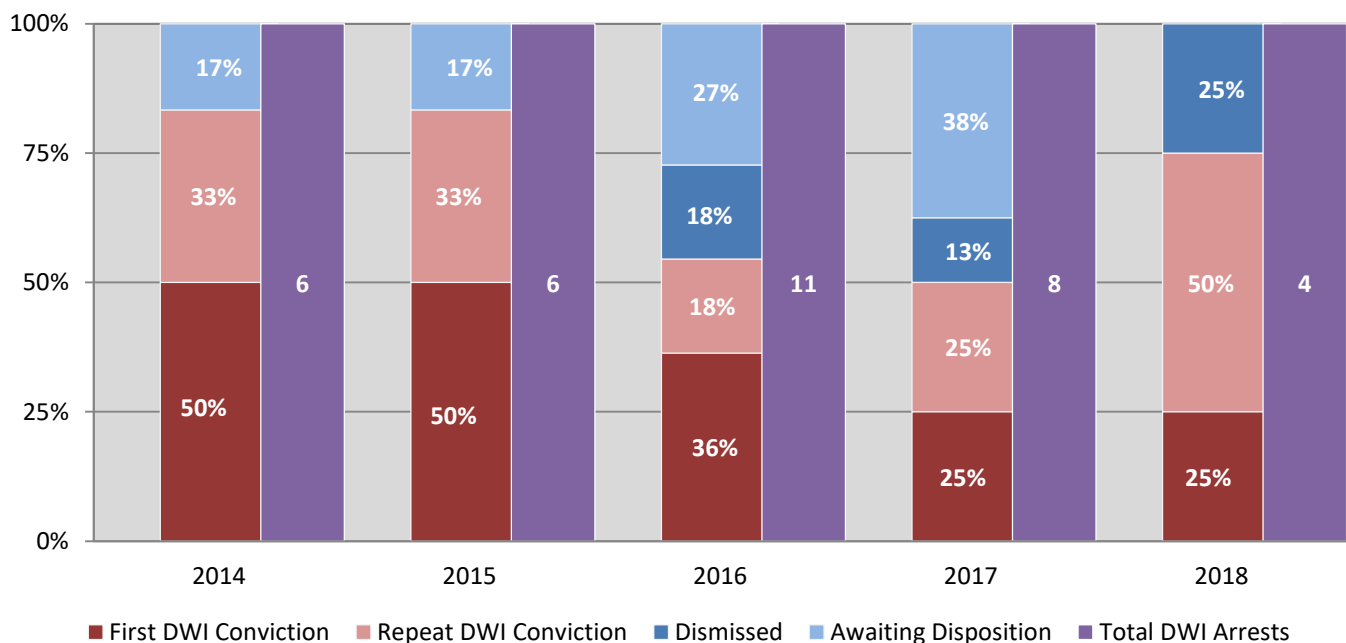
Court Disposition	Average Number of Days		Deviation from Statewide Average
	Catron County	Statewide	
DWI Conviction	70	145	<b>-75</b>
DWI Dismissal	49	153	<b>-104</b>

**Table 27: Court Disposition of DWI Arrests in Catron County, 2014-2018**

Year of DWI Arrest <sup>1</sup>	Court Disposition				Total DWI Arrests
	First DWI Conviction	Repeat DWI Conviction	Dismissed	Awaiting Disposition	
2014	3	2	0	1	6
2015	3	2	0	1	6
2016	4	2	2	3	11
2017	2	2	1	3	8
2018	1	2	1	0	4

<sup>1</sup>Values are based upon the year of the arrest.

**Figure 14: Court Dispositions by Percentage of DWI Arrests in Catron County, 2014-2018**



\*Table 27 contains the values used to calculate percentages shown in Figure 14.