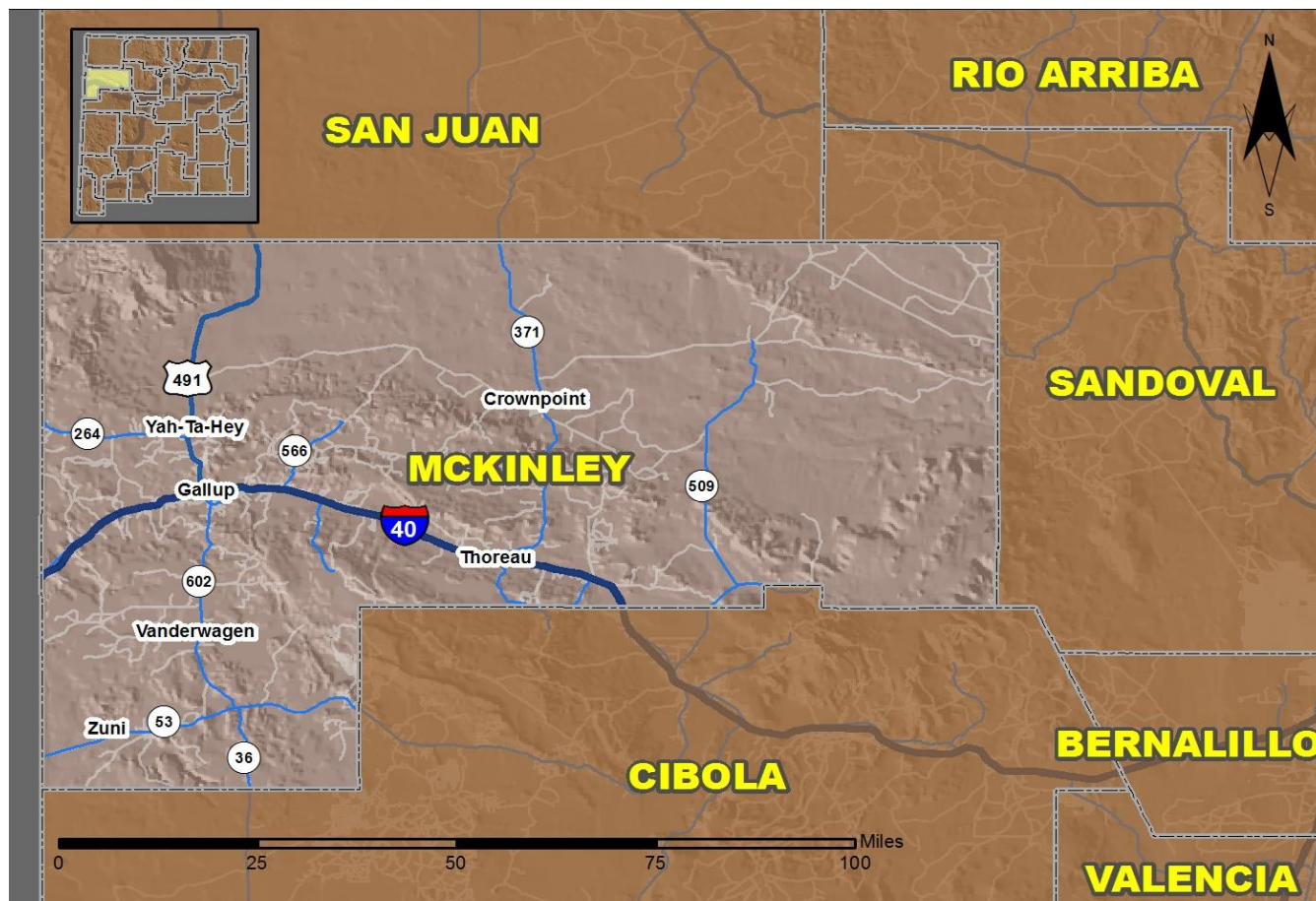


# 2018 Community Report

## McKinley County



Produced for the New Mexico Department of Transportation,  
Traffic Safety Division, Traffic Records Bureau,  
Under Contract 6093 by the University of New Mexico,  
Geospatial and Population Studies, Traffic Research Unit

Distributed in compliance with New Mexico Statute 66-7-214  
as a reference source regarding New Mexico traffic crashes

For the purposes of this report, data are compiled by the University of New Mexico, Geospatial and Population Studies, Traffic Research Unit (TRU), on behalf of the New Mexico Department of Transportation (NMDOT). Data in this report may differ from that in other data sources, such as the Federal Fatality Analysis Reporting System (FARS), due to the timing of publications and rules for how data are compiled and maintained in Federal vs. State databases. If you have questions regarding this report, please contact the Traffic Safety Division at 505-827-0427.

<https://gps.unm.edu/tru/crash-reports/community-reports>

## Definitions

---

**Aggravated DWI** – A driver arrested for 1) driving with a BAC of 0.16 or higher, 2) driving under the influence of alcohol or drugs and causing bodily injury to a human being as a result, or 3) driving under the influence of alcohol or drugs and refusing to submit to a BAC test at the time of arrest for DWI.

**Alcohol-involved Crash** – A crash for which the Uniform Crash Report indicated that 1) a DWI citation was issued, 2) alcohol was a contributing factor, or 3) a person in control of a vehicle (including a pedestrian or pedalcyclist) was suspected of being under the influence of alcohol.

**Alcohol-involved Driver** – A person in control of a vehicle who was cited for DWI or indicated on the Uniform Crash Report as being either suspected or determined by testing to be under the influence of alcohol. There can be multiple alcohol-involved drivers in a single alcohol-involved crash.

**Crash** – A reported incident on a public roadway involving one or more motor vehicles that resulted in death, personal injury, or at least \$500 in property damage. Crashes on private property (such as a parking lot) are not included.

**DWI Arrest (Citation)** – In this report, a DWI arrest (a.k.a. a DWI citation) is a driver arrested for either DWI or aggravated DWI. New Mexico’s legal limit for presumption of driving while intoxicated (DWI) is 0.08 for non-commercial drivers older than 21 years of age, 0.04 for commercial vehicle drivers, and 0.02 for drivers younger than 21 years of age.

**DWI Conviction** – A driver convicted of driving under the intoxicating influence of alcohol, narcotics, or pathogenic drugs, including aggravated DWI.

**Fatal Crash** – A crash in which at least one person was killed. More than one person can be killed in a single fatal crash.

**Fatalities** – The number of people killed in a crash. The terms “killed” and “deaths” are synonymous with “fatalities.” A fatality is crash-related if it occurs at the time of the crash or if the person(s) involved in the crash dies within 30 days.

**Injury Crash** – A reported crash in which at least one person was injured. Injury crashes involve at least one suspected serious injury (Class A), suspected minor injury (Class B), or possible injury (Class C). Fatal crashes are not included.

**Missing Data** – An indication that the applicable field on the UCR form was left blank or contained an invalid code. Starting with crashes that occurred in 2012, improvements in the identification of missing data in the NMDOT crash database led to an increase in the reported amount of missing data.

**Pedalcyclist** – A person riding a mechanism of transport that is powered solely by pedals (a.k.a. bicyclist).

**Pedestrian** – A person on foot, walking, running, jogging, hiking, sitting or lying down who is involved in a motor vehicle traffic crash.

## Sources

---

**Crash Data** – New Mexico Department of Transportation, Traffic Safety Division, Traffic Records Bureau, Traffic Crash Database, as of the report date below. Crash data are compiled using NMDOT Uniform Crash Reports (UCR), submitted by law enforcement agencies in the state, for any incident on a public roadway involving one or more motor vehicles that resulted in death, injury, or at least \$500 in property damage. These reports are processed by the NMDOT Traffic Records Bureau and analyzed by the University of New Mexico, Geospatial and Population Studies, Traffic Research Unit (TRU).

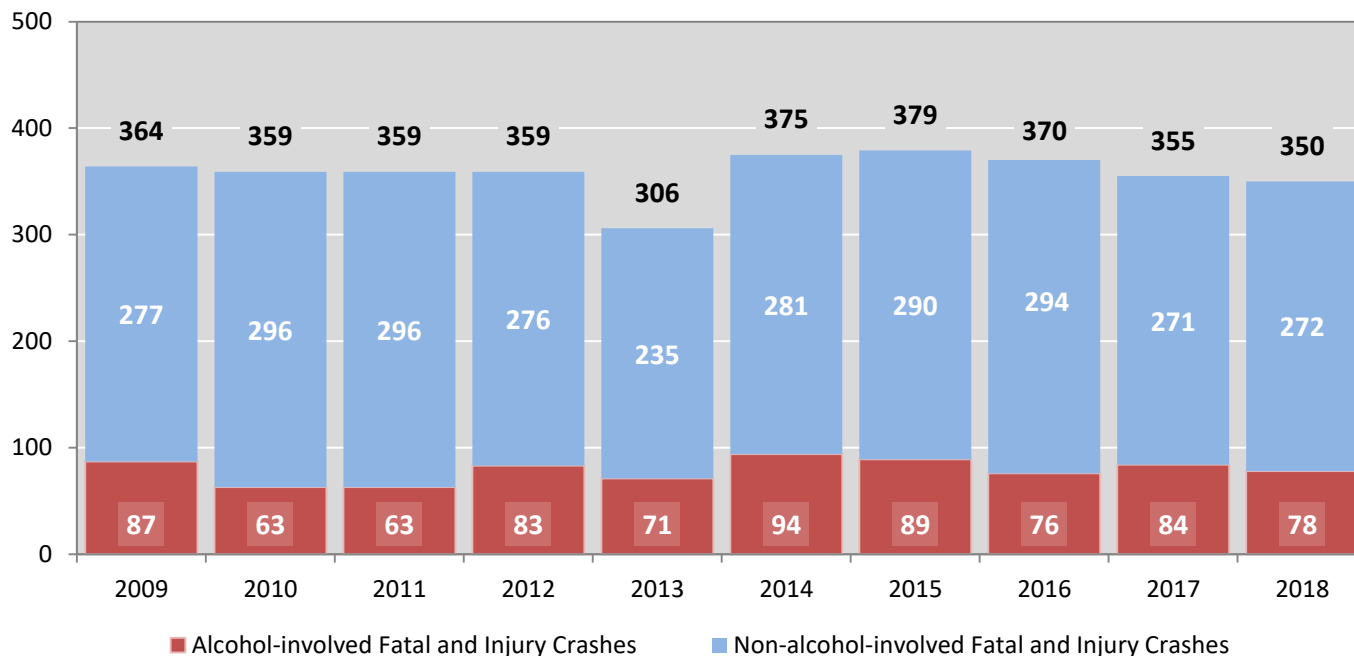
**DWI Citation Tracking System (CTS)** – New Mexico Taxation and Revenue Department (NM TRD), Motor Vehicle Division (MVD), DWI Citation Tracking System (CTS), as of July 2019. Repeat offenders are identified by the combination of account key, arrest date, and citation number. County data are based upon the county where the arrest took place. City data are based upon the city where the offender resides.

**Urban Areas** – Areas defined by the New Mexico Department of Transportation, Asset Management and Planning, 2010 U.S. Census Urbanized Area Boundaries, NMDOT-Adjusted, and U.S. Census Urban Clusters, August 21, 2013. Urban areas for crash years 2013-2017 include a 1/2 mile buffer extending out from those urban boundaries. In crashes before 2013, “urban” was defined as a town or city with a population of at least 2,500 people.

**Table 1: Total Crashes and Alcohol-involved Crashes by  
Crash Severity in McKinley County, 2009-2018**

| Year | Total Crashes |        |                            |              | Alcohol-involved Crashes |        |                            |            |
|------|---------------|--------|----------------------------|--------------|--------------------------|--------|----------------------------|------------|
|      | Fatal         | Injury | Property<br>Damage<br>Only | Total        | Fatal                    | Injury | Property<br>Damage<br>Only | Total      |
| 2009 | 31            | 333    | 954                        | <b>1,318</b> | 23                       | 64     | 83                         | <b>170</b> |
| 2010 | 21            | 338    | 939                        | <b>1,298</b> | 9                        | 54     | 65                         | <b>128</b> |
| 2011 | 27            | 332    | 973                        | <b>1,332</b> | 17                       | 46     | 75                         | <b>138</b> |
| 2012 | 24            | 335    | 994                        | <b>1,353</b> | 17                       | 66     | 69                         | <b>152</b> |
| 2013 | 23            | 283    | 904                        | <b>1,210</b> | 14                       | 57     | 82                         | <b>153</b> |
| 2014 | 41            | 334    | 880                        | <b>1,255</b> | 25                       | 69     | 83                         | <b>177</b> |
| 2015 | 18            | 361    | 976                        | <b>1,355</b> | 7                        | 82     | 91                         | <b>180</b> |
| 2016 | 22            | 348    | 938                        | <b>1,308</b> | 11                       | 65     | 79                         | <b>155</b> |
| 2017 | 28            | 327    | 895                        | <b>1,250</b> | 21                       | 63     | 85                         | <b>169</b> |
| 2018 | 30            | 320    | 918                        | <b>1,268</b> | 12                       | 66     | 80                         | <b>158</b> |

**Figure 1: Alcohol-involved Fatal and Injury Crashes Compared with  
Non-alcohol-involved Fatal and Injury Crashes in McKinley County, 2009-2018**



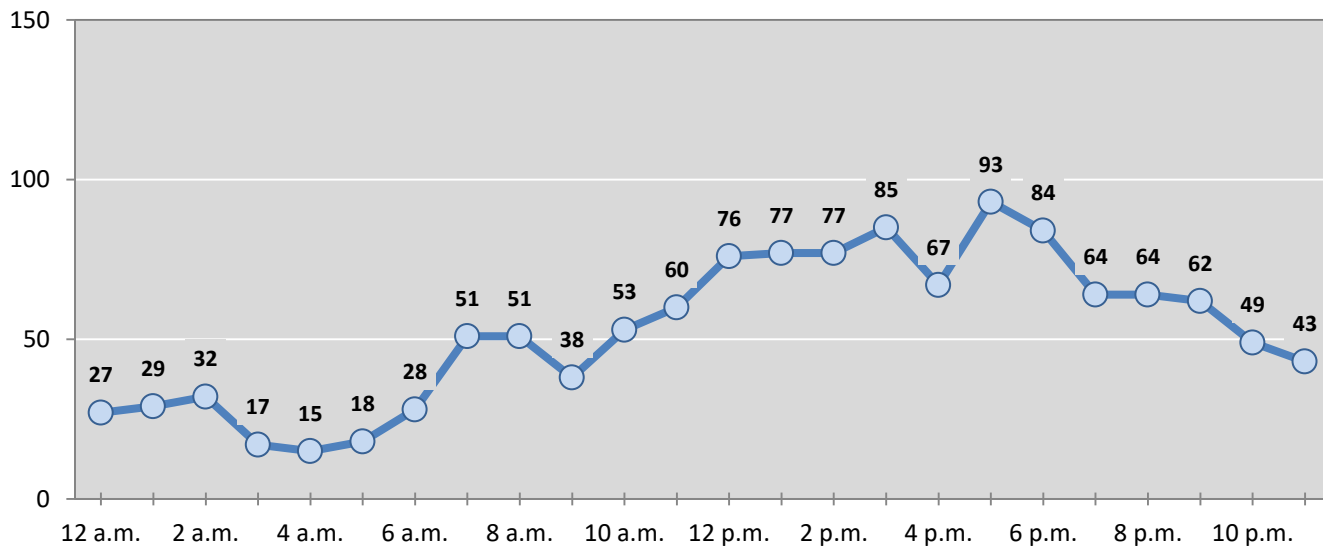
**Table 2: Crashes by Month in McKinley County, 2014-2018**

| Month                | Crashes      |              |              |              |              | 5-Year Average |
|----------------------|--------------|--------------|--------------|--------------|--------------|----------------|
|                      | 2014         | 2015         | 2016         | 2017         | 2018         |                |
| January              | 93           | 124          | 117          | 110          | 94           | <b>108</b>     |
| February             | 114          | 117          | 138          | 89           | 143          | <b>120</b>     |
| March                | 97           | 85           | 89           | 106          | 109          | <b>97</b>      |
| April                | 98           | 87           | 93           | 109          | 108          | <b>99</b>      |
| May                  | 95           | 101          | 97           | 107          | 105          | <b>101</b>     |
| June                 | 110          | 113          | 105          | 101          | 102          | <b>106</b>     |
| July                 | 93           | 97           | 87           | 112          | 87           | <b>95</b>      |
| August               | 106          | 100          | 108          | 106          | 83           | <b>101</b>     |
| September            | 109          | 83           | 111          | 93           | 81           | <b>95</b>      |
| October              | 107          | 117          | 99           | 117          | 117          | <b>111</b>     |
| November             | 88           | 155          | 126          | 100          | 100          | <b>114</b>     |
| December             | 145          | 176          | 138          | 100          | 139          | <b>140</b>     |
| <b>Total Crashes</b> | <b>1,255</b> | <b>1,355</b> | <b>1,308</b> | <b>1,250</b> | <b>1,268</b> | <b>1,287</b>   |

**Table 3: Alcohol-involved Crashes by Month in McKinley County, 2014-2018**

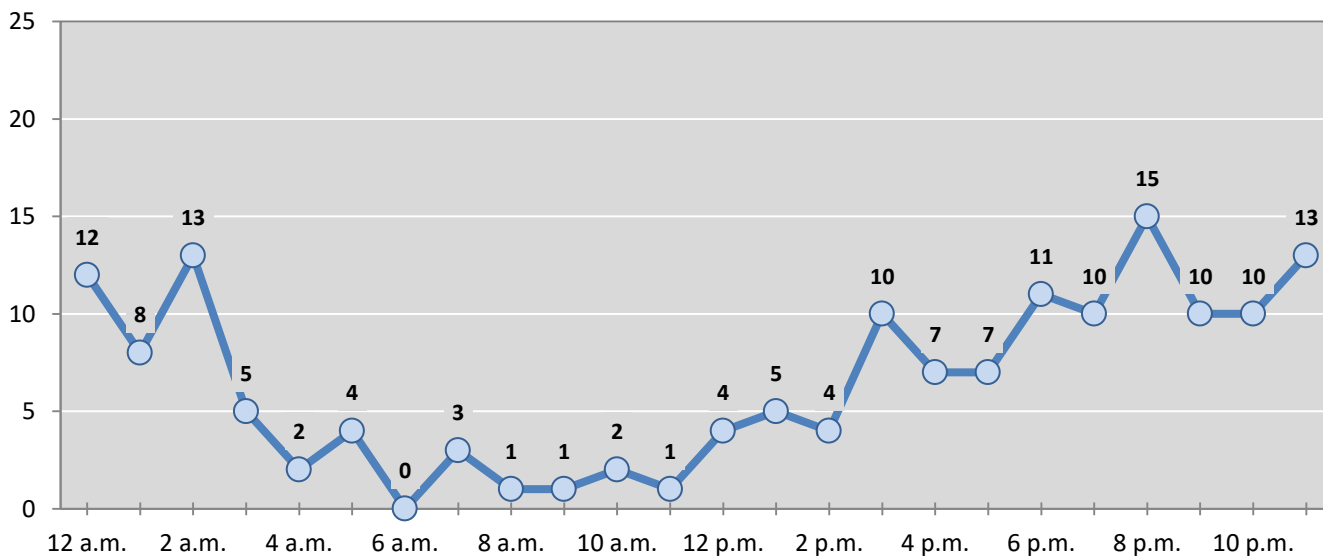
| Month                | Alcohol-involved Crashes |            |            |            |            | 5-Year Average |
|----------------------|--------------------------|------------|------------|------------|------------|----------------|
|                      | 2014                     | 2015       | 2016       | 2017       | 2018       |                |
| January              | 12                       | 17         | 12         | 20         | 9          | <b>14</b>      |
| February             | 15                       | 10         | 18         | 12         | 17         | <b>14</b>      |
| March                | 15                       | 12         | 12         | 15         | 11         | <b>13</b>      |
| April                | 19                       | 7          | 9          | 16         | 11         | <b>12</b>      |
| May                  | 17                       | 17         | 17         | 9          | 17         | <b>15</b>      |
| June                 | 13                       | 14         | 10         | 17         | 11         | <b>13</b>      |
| July                 | 14                       | 19         | 11         | 10         | 17         | <b>14</b>      |
| August               | 16                       | 7          | 13         | 14         | 4          | <b>11</b>      |
| September            | 16                       | 20         | 9          | 12         | 10         | <b>13</b>      |
| October              | 16                       | 17         | 16         | 20         | 17         | <b>17</b>      |
| November             | 13                       | 15         | 10         | 14         | 12         | <b>13</b>      |
| December             | 11                       | 25         | 18         | 10         | 22         | <b>17</b>      |
| <b>Total Crashes</b> | <b>177</b>               | <b>180</b> | <b>155</b> | <b>169</b> | <b>158</b> | <b>168</b>     |

**Figure 2: Crashes by Hour in McKinley County, 2018**



\* In 2018, McKinley County had 8 crashes for which hour data were missing.

**Figure 3: Alcohol-involved Crashes by Hour in McKinley County, 2018**



\* In 2018, McKinley County had 0 alcohol-involved crashes for which hour data were missing.

**Table 4: Alcohol-involved Crashes by Day of Week in McKinley County, 2014-2018**

| Day of Week          | Alcohol-involved Crashes |            |            |            |            | 5-Year Average |
|----------------------|--------------------------|------------|------------|------------|------------|----------------|
|                      | 2014                     | 2015       | 2016       | 2017       | 2018       |                |
| Sunday               | 28                       | 21         | 22         | 25         | 21         | <b>23</b>      |
| Monday               | 12                       | 19         | 23         | 13         | 19         | <b>17</b>      |
| Tuesday              | 30                       | 28         | 15         | 21         | 17         | <b>22</b>      |
| Wednesday            | 20                       | 17         | 10         | 22         | 20         | <b>18</b>      |
| Thursday             | 22                       | 20         | 25         | 22         | 25         | <b>23</b>      |
| Friday               | 27                       | 36         | 31         | 21         | 24         | <b>28</b>      |
| Saturday             | 38                       | 39         | 29         | 45         | 32         | <b>37</b>      |
| <b>Total Crashes</b> | <b>177</b>               | <b>180</b> | <b>155</b> | <b>169</b> | <b>158</b> | <b>168</b>     |

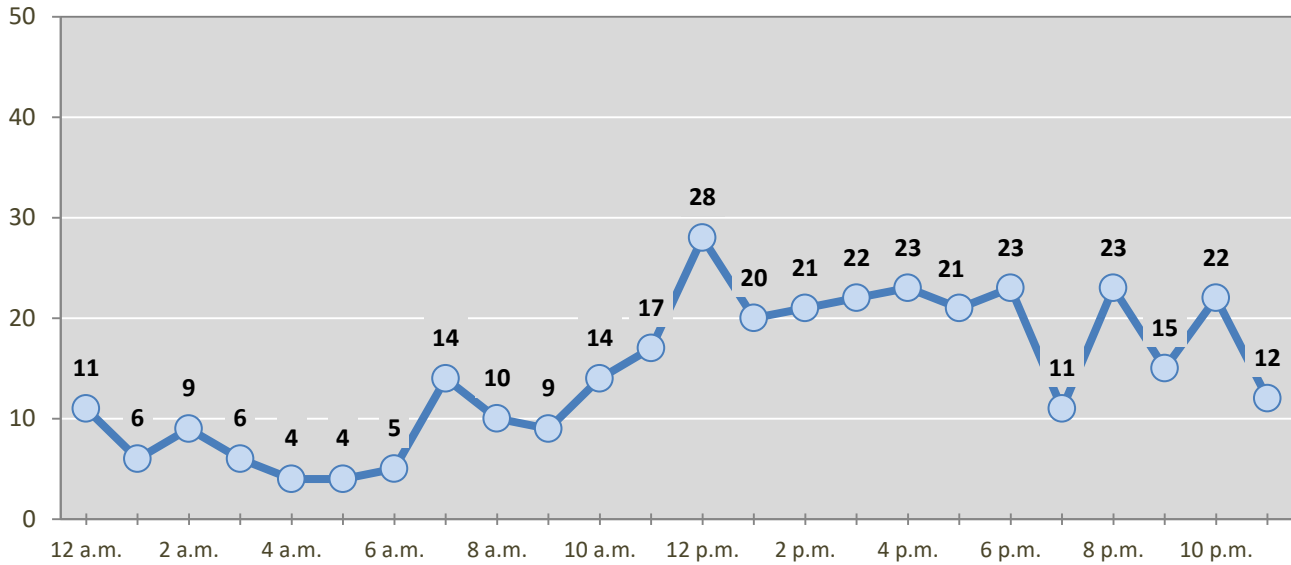
**Table 5: Fatal and Injury Crashes by Day of Week in McKinley County, 2014-2018**

| Day of Week          | Fatal and Injury Crashes |            |            |            |            | 5-Year Average |
|----------------------|--------------------------|------------|------------|------------|------------|----------------|
|                      | 2014                     | 2015       | 2016       | 2017       | 2018       |                |
| Sunday               | 48                       | 35         | 45         | 45         | 40         | <b>43</b>      |
| Monday               | 48                       | 55         | 58         | 36         | 50         | <b>49</b>      |
| Tuesday              | 51                       | 63         | 43         | 44         | 51         | <b>50</b>      |
| Wednesday            | 46                       | 48         | 48         | 54         | 33         | <b>46</b>      |
| Thursday             | 47                       | 44         | 59         | 45         | 48         | <b>49</b>      |
| Friday               | 69                       | 75         | 61         | 60         | 61         | <b>65</b>      |
| Saturday             | 66                       | 59         | 56         | 71         | 67         | <b>64</b>      |
| <b>Total Crashes</b> | <b>375</b>               | <b>379</b> | <b>370</b> | <b>355</b> | <b>350</b> | <b>366</b>     |

**Table 6: Pedestrian and Pedalcyclist Crashes by Day of Week in McKinley County, 2014-2018**

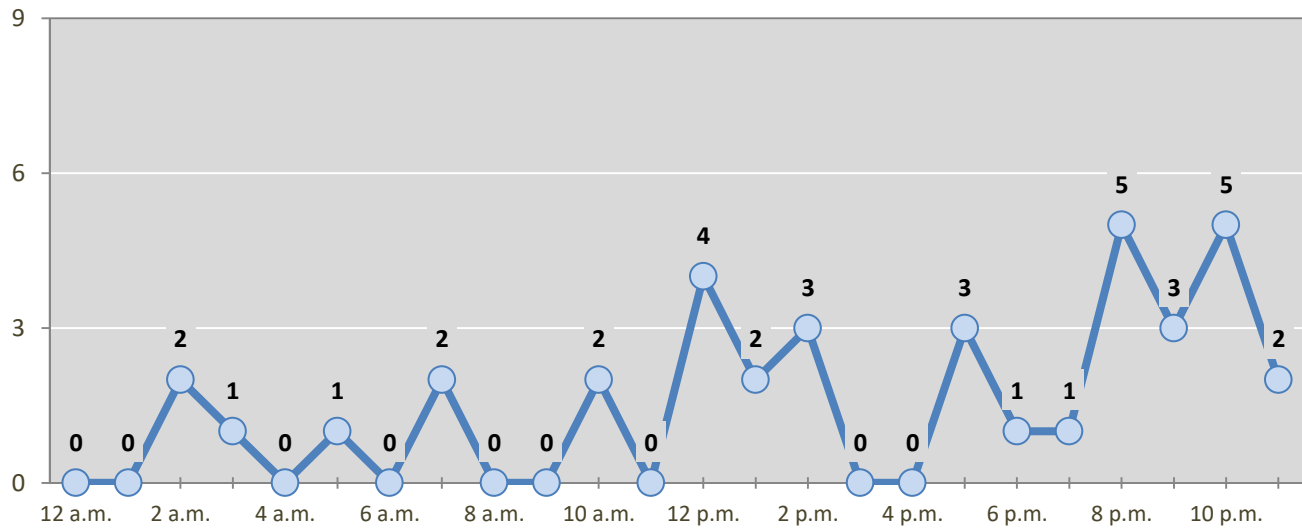
| Day of Week          | Pedestrian and Pedalcyclist Crashes |           |           |           |           | 5-Year Average |
|----------------------|-------------------------------------|-----------|-----------|-----------|-----------|----------------|
|                      | 2014                                | 2015      | 2016      | 2017      | 2018      |                |
| Sunday               | 6                                   | 5         | 1         | 1         | 4         | <b>3</b>       |
| Monday               | 9                                   | 7         | 3         | 3         | 5         | <b>5</b>       |
| Tuesday              | 8                                   | 7         | 2         | 6         | 7         | <b>6</b>       |
| Wednesday            | 2                                   | 3         | 7         | 7         | 1         | <b>4</b>       |
| Thursday             | 6                                   | 5         | 6         | 4         | 5         | <b>5</b>       |
| Friday               | 6                                   | 6         | 3         | 7         | 9         | <b>6</b>       |
| Saturday             | 9                                   | 7         | 6         | 13        | 6         | <b>8</b>       |
| <b>Total Crashes</b> | <b>46</b>                           | <b>40</b> | <b>28</b> | <b>41</b> | <b>37</b> | <b>38</b>      |

**Figure 4: Fatal and Injury Crashes by Hour in McKinley County, 2018**



\* In 2018, McKinley County had 0 crashes for which hour data were missing.

**Figure 5: Pedestrian and Pedalcyclist Crashes by Hour in McKinley County, 2018**



\* In 2018, McKinley County had 0 crashes for which hour data were missing.

**Table 7: Severity of Injuries to People in Crashes by Rural and Urban Location in McKinley County, 2018**

| Urban and Rural Locations by Alcohol-involvement | People in Crashes by Severity of Injuries |                                      |                                    |                             |                                | Total People |
|--|---|--------------------------------------|------------------------------------|-----------------------------|--------------------------------|--------------|
|  | Fatalities (Class K)                      | Suspected Serious Injuries (Class A) | Suspected Minor Injuries (Class B) | Possible Injuries (Class C) | No Apparent Injuries (Class O) |              |
| <b>People in Alcohol-involved Crashes</b>        | <b>15</b>                                 | <b>20</b>                            | <b>44</b>                          | <b>56</b>                   | <b>249</b>                     | <b>384</b>   |
| Urban  | 2   | 11                                   | 16                                 | 30                          | 128                            | 187          |
| Rural Non-Interstate                             | 12  | 9                                    | 24                                 | 20                          | 104                            | 169          |
| Rural Interstate                                 | 1   | 0                                    | 4                                  | 6                           | 17                             | 28           |
| <b>People in Crashes</b>                         | <b>41</b>                                 | <b>49</b>                            | <b>147</b>                         | <b>340</b>                  | <b>2,746</b>                   | <b>3,323</b> |
| Urban  | 4   | 23                                   | 52                                 | 164                         | 1,543                          | 1,786        |
| Rural Non-Interstate                             | 21  | 19                                   | 43                                 | 108                         | 728                            | 919          |
| Rural Interstate                                 | 16  | 7                                    | 52                                 | 68                          | 475                            | 618          |
| <b>Percent in Alcohol-involved Crashes</b>       | <b>37%</b>                                | <b>41%</b>                           | <b>30%</b>                         | <b>16%</b>                  | <b>9%</b>                      | <b>12%</b>   |

**Table 8: Total Crashes by Roadway System and Crash Severity in McKinley County, 2014-2018**

| Crash Severity by System          | Crashes by Year |            |            |            |            | 5-Year Average |
|-----------------------------------|-----------------|------------|------------|------------|------------|----------------|
|                                   | 2014            | 2015       | 2016       | 2017       | 2018       |                |
| <b>Total Rural Interstate</b>     | <b>206</b>      | <b>188</b> | <b>188</b> | <b>174</b> | <b>251</b> | <b>201</b>     |
| Fatal Crash                       | 11              | 3          | 5          | 3          | 9          | 6              |
| Injury Crash                      | 52              | 45         | 54         | 52         | 72         | 55             |
| Property Damage Only Crash        | 143             | 140        | 129        | 119        | 170        | 140            |
| <b>Total Rural Non-Interstate</b> | <b>232</b>      | <b>218</b> | <b>236</b> | <b>195</b> | <b>355</b> | <b>247</b>     |
| Fatal Crash                       | 16              | 11         | 12         | 13         | 17         | 14             |
| Injury Crash                      | 83              | 72         | 71         | 61         | 100        | 77             |
| Property Damage Only Crash        | 133             | 135        | 153        | 121        | 238        | 156            |
| <b>Total Urban</b>                | <b>817</b>      | <b>949</b> | <b>884</b> | <b>881</b> | <b>662</b> | <b>839</b>     |
| Fatal Crash                       | 14              | 4          | 5          | 12         | 4          | 8              |
| Injury Crash                      | 199             | 244        | 223        | 214        | 148        | 206            |
| Property Damage Only Crash        | 604             | 701        | 656        | 655        | 510        | 625            |



**Table 9: Total Crashes by Crash Classification in McKinley County, 2014-2018**

| Crash Classification  | Total Crashes by Year |              |              |              |              | 5-Year Average |
|-----------------------|-----------------------|--------------|--------------|--------------|--------------|----------------|
|                       | 2014                  | 2015         | 2016         | 2017         | 2018         |                |
| Animal                | 72                    | 58           | 52           | 65           | 85           | 66             |
| Fixed Object          | 137                   | 193          | 173          | 145          | 152          | 160            |
| Other (Non-Collision) | 31                    | 38           | 49           | 38           | 52           | 42             |
| Other (Object)        | 45                    | 47           | 42           | 39           | 40           | 43             |
| Other Vehicle         | 686                   | 797          | 803          | 772          | 732          | 758            |
| Overturn/Rollover     | 136                   | 32           | 61           | 67           | 66           | 72             |
| Parked Vehicle        | 72                    | 61           | 62           | 63           | 54           | 62             |
| Pedalcyclist          | 8                     | 5            | 2            | 5            | 8            | 6              |
| Pedestrian            | 39                    | 35           | 26           | 36           | 29           | 33             |
| Railroad Train        | 1                     | 1            | 0            | 1            | 2            | 1              |
| Rollover              | 1                     | 57           | 22           | 10           | 24           | 23             |
| Vehicle on Other Road | 8                     | 13           | 14           | 9            | 20           | 13             |
| Missing Data          | 19                    | 18           | 2            | 0            | 4            | 9              |
| <b>Total Crashes</b>  | <b>1,255</b>          | <b>1,355</b> | <b>1,308</b> | <b>1,250</b> | <b>1,268</b> | <b>1,287</b>   |

**Table 10: Vehicles in Crashes by Vehicle Type in McKinley County, 2014-2018**

| Vehicle Type <sup>1</sup> | Vehicles in Crashes by Vehicle Type |              |              |              |              | 5-Year Average |
|---------------------------|-------------------------------------|--------------|--------------|--------------|--------------|----------------|
|                           | 2014                                | 2015         | 2016         | 2017         | 2018         |                |
| Bus                       | 7                                   | 6            | 1            | 6            | 5            | 5              |
| Motorcycle                | 22                                  | 19           | 12           | 25           | 16           | 19             |
| Passenger                 | 772                                 | 912          | 948          | 877          | 904          | 883            |
| Pedalcyclist              | 8                                   | 5            | 2            | 5            | 8            | 6              |
| Pedestrian                | 39                                  | 35           | 27           | 37           | 30           | 34             |
| Pickup                    | 549                                 | 558          | 513          | 530          | 509          | 532            |
| Semi                      | 148                                 | 144          | 165          | 140          | 183          | 156            |
| Van/SUV/4WD               | 367                                 | 439          | 461          | 460          | 392          | 424            |
| Other Vehicle             | 16                                  | 40           | 13           | 4            | 24           | 19             |
| Missing Data              | 234                                 | 196          | 140          | 129          | 119          | 164            |
| <b>Total Vehicles</b>     | <b>2,162</b>                        | <b>2,354</b> | <b>2,282</b> | <b>2,213</b> | <b>2,190</b> | <b>2,240</b>   |

<sup>1</sup> Pedestrians and pedalcyclists are counted as non-motorized vehicles, when involved in a crash with a motor vehicle. See Page 17 for data on drivers of non-motorized vehicles in crashes (i.e. pedestrians and pedalcyclists).

**Table 11: Motor Vehicle Drivers in Crashes by Vehicle Type  
and Age Group in McKinley County, 2018**

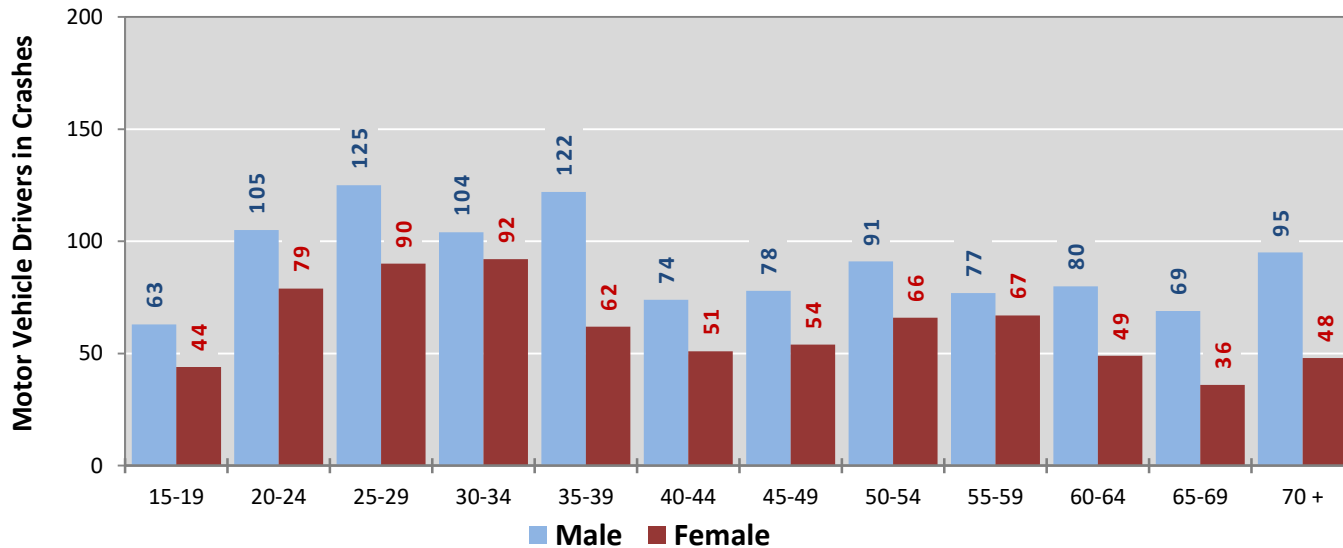
| Age Groups           | Motor Vehicle <sup>1</sup> Drivers by Vehicle Type and Age Group |             |            |            |            |             |               |              | Total Drivers |
|----------------------|--|-------------|------------|------------|------------|-------------|---------------|--------------|---------------|
|                      | Bus  | Motor-cycle | Passenger  | Pickup     | Semi       | Van 4WD SUV | Other Vehicle | Missing Data |               |
| 15-19                | 0  | 0           | 55         | 26         | 1          | 23          | 2             | 1            | 108           |
| 20-24                | 0  | 1           | 117        | 33         | 3          | 28          | 2             | 0            | 184           |
| 25-29                | 0  | 1           | 115        | 38         | 20         | 41          | 1             | 1            | 217           |
| 30-34                | 0  | 1           | 90         | 48         | 15         | 40          | 0             | 3            | 197           |
| 35-39                | 1  | 2           | 72         | 45         | 17         | 49          | 1             | 1            | 188           |
| 40-44                | 0  | 0           | 43         | 21         | 18         | 39          | 4             | 1            | 126           |
| 45-49                | 0  | 1           | 53         | 36         | 20         | 20          | 0             | 2            | 132           |
| 50-54                | 1  | 2           | 61         | 33         | 31         | 28          | 0             | 1            | 157           |
| 55-59                | 1  | 3           | 60         | 44         | 17         | 18          | 1             | 0            | 144           |
| 60-64                | 2  | 0           | 43         | 41         | 18         | 24          | 2             | 2            | 132           |
| 65-69                | 0  | 0           | 41         | 34         | 5          | 22          | 3             | 1            | 106           |
| 70 +                 | 0  | 1           | 54         | 52         | 9          | 22          | 5             | 1            | 144           |
| Missing Data         | 0  | 4           | 100        | 58         | 9          | 38          | 3             | 105          | 317           |
| <b>Total Drivers</b> | <b>5</b>   | <b>16</b>   | <b>904</b> | <b>509</b> | <b>183</b> | <b>392</b>  | <b>24</b>     | <b>119</b>   | <b>2,152</b>  |

**Table 12: Alcohol-involved Motor Vehicle Drivers in Crashes by Vehicle Type  
and Age Group in McKinley County, 2018**

| Age Groups           | Alcohol-involved Motor Vehicle <sup>1</sup> Drivers by Vehicle Type and Age Group |             |           |           |          |             |               |              | Total Drivers |
|----------------------|---|-------------|-----------|-----------|----------|-------------|---------------|--------------|---------------|
|                      | Bus   | Motor-cycle | Passenger | Pickup    | Semi     | Van 4WD SUV | Other Vehicle | Missing Data |               |
| 15-19                | 0   | 0           | 0         | 1         | 0        | 0           | 0             | 0            | 1             |
| 20-24                | 0   | 0           | 19        | 6         | 0        | 3           | 0             | 0            | 28            |
| 25-29                | 0   | 0           | 19        | 8         | 1        | 4           | 1             | 0            | 33            |
| 30-34                | 0   | 0           | 11        | 7         | 0        | 5           | 0             | 0            | 23            |
| 35-39                | 0   | 0           | 7         | 5         | 1        | 5           | 0             | 1            | 19            |
| 40-44                | 0   | 0           | 6         | 2         | 0        | 1           | 0             | 0            | 9             |
| 45-49                | 0   | 0           | 2         | 2         | 0        | 0           | 0             | 0            | 4             |
| 50-54                | 0   | 0           | 1         | 1         | 0        | 2           | 0             | 0            | 4             |
| 55-59                | 0   | 0           | 3         | 2         | 0        | 0           | 0             | 0            | 5             |
| 60-64                | 0   | 0           | 0         | 0         | 0        | 1           | 0             | 0            | 1             |
| 65-69                | 0   | 0           | 4         | 0         | 0        | 0           | 0             | 0            | 4             |
| 70 +                 | 0   | 0           | 1         | 1         | 0        | 0           | 0             | 0            | 2             |
| Missing Data         | 0   | 0           | 7         | 1         | 0        | 0           | 0             | 1            | 9             |
| <b>Total Drivers</b> | <b>0</b>  | <b>0</b>    | <b>80</b> | <b>36</b> | <b>2</b> | <b>21</b>   | <b>1</b>      | <b>2</b>     | <b>142</b>    |

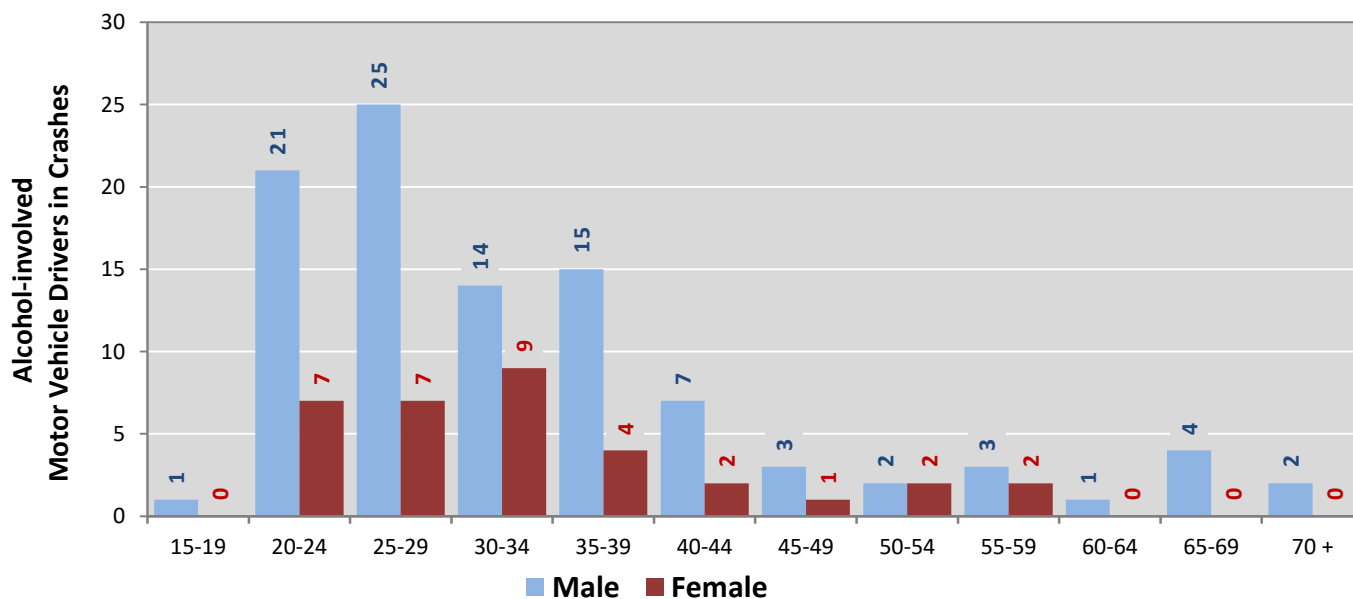
<sup>1</sup> See Page 17 for data on drivers of non-motorized vehicles in crashes (i.e. pedestrians and pedalcyclists).

**Figure 6: Motor Vehicle Drivers in Crashes by Age Group and Sex in McKinley County, 2018**



\* In 2018, McKinley County had 331 drivers in crashes for which age or sex data were missing.

**Figure 7: Alcohol-involved Motor Vehicle Drivers in Crashes by Age Group and Sex in McKinley County, 2018**



\* In 2018, McKinley County had 10 drivers in crashes for which age or sex data were missing.

**Table 13: Alcohol-involved Motor Vehicle Drivers Under 21 (Ages 15-20) in Crashes in McKinley County, 2014-2018**

| Age <sup>1</sup>     | Year      |          |          |          |          | 5-Year Total |
|----------------------|-----------|----------|----------|----------|----------|--------------|
|                      | 2014      | 2015     | 2016     | 2017     | 2018     |              |
| 15                   | 0         | 0        | 0        | 0        | 0        | 0            |
| 16                   | 1         | 0        | 1        | 0        | 0        | 2            |
| 17                   | 0         | 1        | 0        | 1        | 0        | 2            |
| 18                   | 4         | 0        | 2        | 1        | 0        | 7            |
| 19                   | 3         | 1        | 3        | 1        | 1        | 9            |
| 20                   | 8         | 5        | 3        | 3        | 5        | 24           |
| <b>Total Drivers</b> | <b>16</b> | <b>7</b> | <b>9</b> | <b>6</b> | <b>6</b> | <b>44</b>    |

**Table 14: Motor Vehicle Drivers Under 21 (Ages 15-20) in Crashes by Age, Sex and Alcohol-involvement in McKinley County, 2018**

| Age <sup>1</sup>     | Total Drivers |           |               |                  | Alcohol-involved Drivers |          |               |                  |
|----------------------|---------------|-----------|---------------|------------------|--------------------------|----------|---------------|------------------|
|                      | Sex           |           | Total Drivers | Percent of Total | Sex                      |          | Total Drivers | Percent of Total |
|                      | Male          | Female    |               |                  | Male                     | Female   |               |                  |
| 15                   | 3             | 1         | 4             | 3%               | 0                        | 0        | 0             | 0%               |
| 16                   | 12            | 7         | 19            | 13%              | 0                        | 0        | 0             | 0%               |
| 17                   | 13            | 8         | 21            | 14%              | 0                        | 0        | 0             | 0%               |
| 18                   | 17            | 9         | 26            | 18%              | 0                        | 0        | 0             | 0%               |
| 19                   | 18            | 19        | 37            | 25%              | 1                        | 0        | 1             | 17%              |
| 20                   | 21            | 19        | 40            | 27%              | 3                        | 2        | 5             | 83%              |
| <b>Total Drivers</b> | <b>84</b>     | <b>63</b> | <b>147</b>    | <b>100%</b>      | <b>4</b>                 | <b>2</b> | <b>6</b>      | <b>100%</b>      |

<sup>1</sup> For analysis of drivers under age 21, when the driver age or sex are not identified on the crash report (typically hit-and-run drivers), the driver data are considered unreliable and are excluded from the analysis.

**Table 15: Frequency of Contributing Factors in Crashes  
by Crash Severity in McKinley County, 2018**

| Contributing Factors                 | Frequency of Contributing Factor <sup>1</sup> by Crash Severity |                             |   |                          |
|--------------------------------------|---|-----------------------------|---|--------------------------|
|                                      | Frequency in Fatal Crashes                                      | Frequency in Injury Crashes | Frequency in Property Damage Only Crashes | Frequency in All Crashes |
| <b>Human</b>                         | <b>60</b>   | <b>604</b>                  | <b>1,390</b>                              | <b>2,054</b>             |
| Driver Inattention                   | 10  | 185                         | 426                                       | <b>621</b>               |
| Excessive Speed                      | 8   | 46                          | 109                                       | <b>163</b>               |
| Alcohol Involved                     | 12  | 67                          | 80  | <b>159</b>               |
| Other Improper Driving               | 2   | 46                          | 100                                       | <b>148</b>               |
| Speed Too Fast for Conditions        | 5   | 41                          | 96  | <b>142</b>               |
| Failed to Yield Right of Way         | 1   | 44                          | 92  | <b>137</b>               |
| Following Too Closely                | 0   | 40                          | 73  | <b>113</b>               |
| Avoid No Contact - Vehicle           | 0   | 23                          | 81  | <b>104</b>               |
| Made Improper Turn                   | 1   | 20                          | 67  | <b>88</b>                |
| Improper Lane Change                 | 0   | 10                          | 54  | <b>64</b>                |
| Drove Left Of Center                 | 5   | 12                          | 30  | <b>47</b>                |
| Disregarded Traffic Signal           | 1   | 16                          | 22  | <b>39</b>                |
| Improper Overtaking                  | 0   | 8                           | 31  | <b>39</b>                |
| Vehicle Skidded Before Brake         | 2   | 6                           | 27  | <b>35</b>                |
| Improper Backing                     | 0   | 2                           | 32  | <b>34</b>                |
| Avoid No Contact - Other             | 3   | 4                           | 21  | <b>28</b>                |
| Passed Stop Sign                     | 0   | 6                           | 17  | <b>23</b>                |
| Drug Involved                        | 5   | 5                           | 9   | <b>19</b>                |
| Pedestrian Error                     | 5   | 12                          | 1   | <b>18</b>                |
| Cell Phone                           | 0   | 4                           | 8   | <b>12</b>                |
| Failed to Yield to Emergency Vehicle | 0   | 2                           | 3   | <b>5</b>                 |
| Failed to Yield to Police Vehicle    | 0   | 0                           | 5   | <b>5</b>                 |
| High Speed Pursuit                   | 0   | 0                           | 5   | <b>5</b>                 |
| Texting                              | 0   | 3                           | 1   | <b>4</b>                 |
| Driverless Moving Vehicle            | 0   | 2                           | 0   | <b>2</b>                 |
| <b>Vehicle</b>                       | <b>3</b>  | <b>5</b>                    | <b>36</b>                                 | <b>44</b>                |
| Defective Tires                      | 3   | 4                           | 12  | <b>19</b>                |
| Other Mechanical Defect              | 0   | 1                           | 18  | <b>19</b>                |
| Inadequate Brakes                    | 0   | 0                           | 4   | <b>4</b>                 |
| Defective Steering                   | 0   | 0                           | 2   | <b>2</b>                 |
| <b>Environment</b>                   | <b>0</b>  | <b>3</b>                    | <b>3</b>                                  | <b>6</b>                 |
| Road Defect                          | 0   | 2                           | 1   | <b>3</b>                 |
| Low Visibility Due to Smoke          | 0   | 0                           | 2   | <b>2</b>                 |
| Traffic Control Not Functioning      | 0   | 1                           | 0   | <b>1</b>                 |
| <b>Other</b>                         | <b>13</b>   | <b>225</b>                  | <b>695</b>                                | <b>933</b>               |
| None                                 | 7   | 171                         | 505                                       | <b>683</b>               |
| Other - No Driver Error              | 6   | 54                          | 190                                       | <b>250</b>               |

<sup>1</sup> Multiple contributing factors may be reported for any vehicle in a crash.

**Table 16: People in Crashes by Crash Classification and Severity of Injuries in McKinley County, 2018**

| Crash Classification  | People in Crashes by Severity of Injuries |                                      |                                    |                             |                                | Total People |
|-----------------------|---|--------------------------------------|------------------------------------|-----------------------------|--------------------------------|--------------|
|                       | Fatalities (Class K)                      | Suspected Serious Injuries (Class A) | Suspected Minor Injuries (Class B) | Possible Injuries (Class C) | No Apparent Injuries (Class O) |              |
| Animal                | 0   | 0                                    | 1                                  | 13                          | 143                            | 157          |
| Fixed Object          | 2   | 3                                    | 30                                 | 22                          | 175                            | 232          |
| Other (Non-Collision) | 1   | 0                                    | 3                                  | 5                           | 85                             | 94           |
| Other (Object)        | 0   | 0                                    | 2                                  | 3                           | 75                             | 80           |
| Other Vehicle         | 18  | 25                                   | 67                                 | 254                         | 1,954                          | 2,318        |
| Overturn/Rollover     | 7   | 5                                    | 17                                 | 17                          | 75                             | 121          |
| Parked Vehicle        | 0   | 2                                    | 1                                  | 2                           | 125                            | 130          |
| Pedalcyclist          | 0   | 0                                    | 2                                  | 5                           | 9                              | 16           |
| Pedestrian            | 8   | 10                                   | 7                                  | 6                           | 36                             | 67           |
| Railroad Train        | 0   | 1                                    | 2                                  | 0                           | 5                              | 8            |
| Rollover              | 5   | 3                                    | 11                                 | 6                           | 14                             | 39           |
| Vehicle on Other Road | 0   | 0                                    | 4                                  | 7                           | 41                             | 52           |
| Missing Data          | 0   | 0                                    | 0                                  | 0                           | 9                              | 9            |
| <b>Total People</b>   | <b>41</b>                                 | <b>49</b>                            | <b>147</b>                         | <b>340</b>                  | <b>2,746</b>                   | <b>3,323</b> |

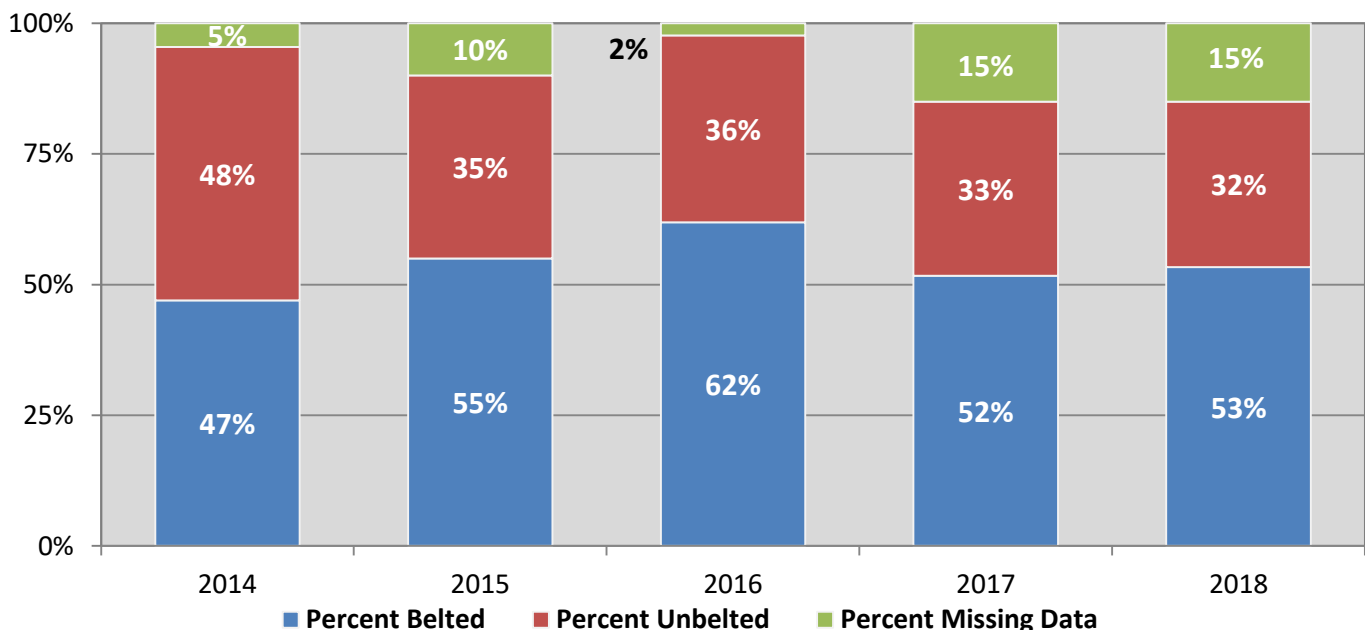
**Table 17: Killed or Injured Unbelted People in Crashes by Sex and Age Group in McKinley County, 2018**

| Age Groups          | Unbelted People Killed or Injured <sup>1,2</sup> |                 |           |                   | Total People |
|---------------------|--|-----------------|-----------|-------------------|--------------|
|                     | Male   | Percent of Male | Female    | Percent of Female |              |
| 0-4                 | 0  | 0%              | 0         | 0%                | 0            |
| 5-9                 | 2  | 8%              | 0         | 0%                | 2            |
| 10-14               | 1  | 4%              | 2         | 9%                | 3            |
| 15-19               | 3  | 12%             | 4         | 17%               | 7            |
| 20-24               | 2  | 8%              | 0         | 0%                | 2            |
| 25-29               | 0  | 0%              | 5         | 22%               | 5            |
| 30-34               | 4  | 16%             | 3         | 13%               | 7            |
| 35-39               | 4  | 16%             | 4         | 17%               | 8            |
| 40-44               | 2  | 8%              | 0         | 0%                | 2            |
| 45-49               | 3  | 12%             | 0         | 0%                | 3            |
| 50-54               | 1  | 4%              | 1         | 4%                | 2            |
| 55-59               | 0  | 0%              | 0         | 0%                | 0            |
| 60-64               | 1  | 4%              | 2         | 9%                | 3            |
| 65-69               | 0  | 0%              | 1         | 4%                | 1            |
| 70 +                | 1  | 4%              | 1         | 4%                | 2            |
| Missing Data        | 1  | 4%              | 0         | 0%                | 1            |
| <b>Total People</b> | <b>25</b>  | <b>100%</b>     | <b>23</b> | <b>100%</b>       | <b>48</b>    |

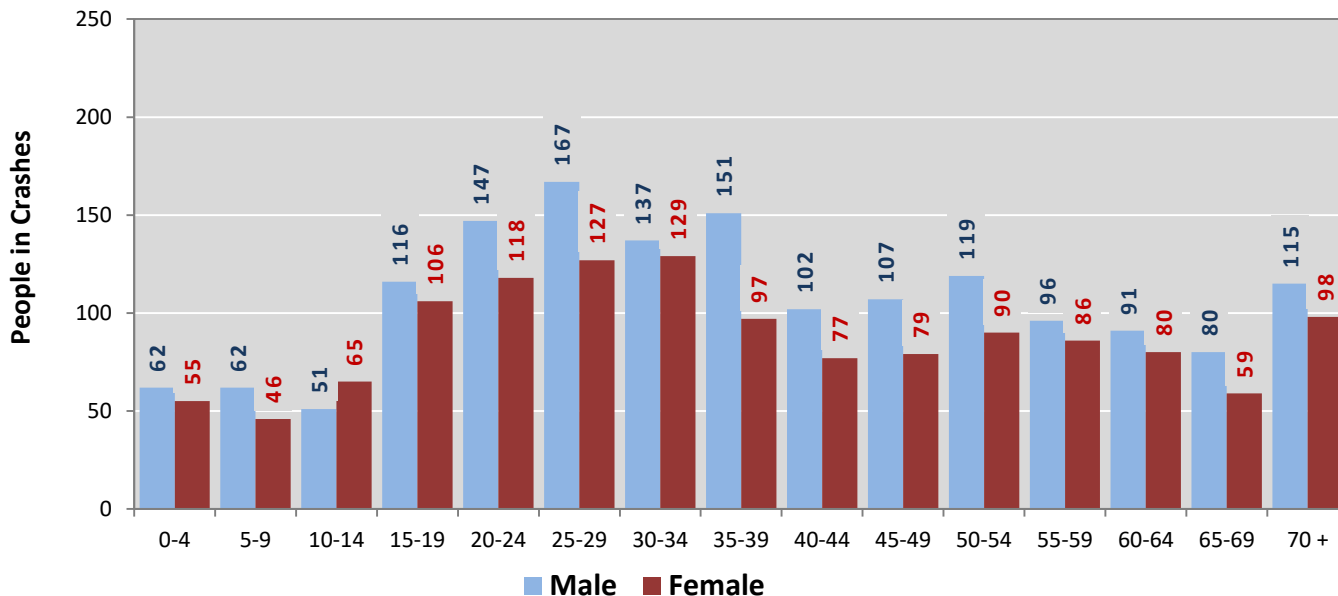
<sup>1</sup> People injured are in one of three categories: suspected serious injury, suspected minor injury, or possible injury.

<sup>2</sup> Excludes people in or on buses, heavy trucks, motorcycles, or ATVs.

**Figure 8: Seatbelt Use by People in Crashes with Fatal or Suspected Serious Injuries in McKinley County, 2014-2018**

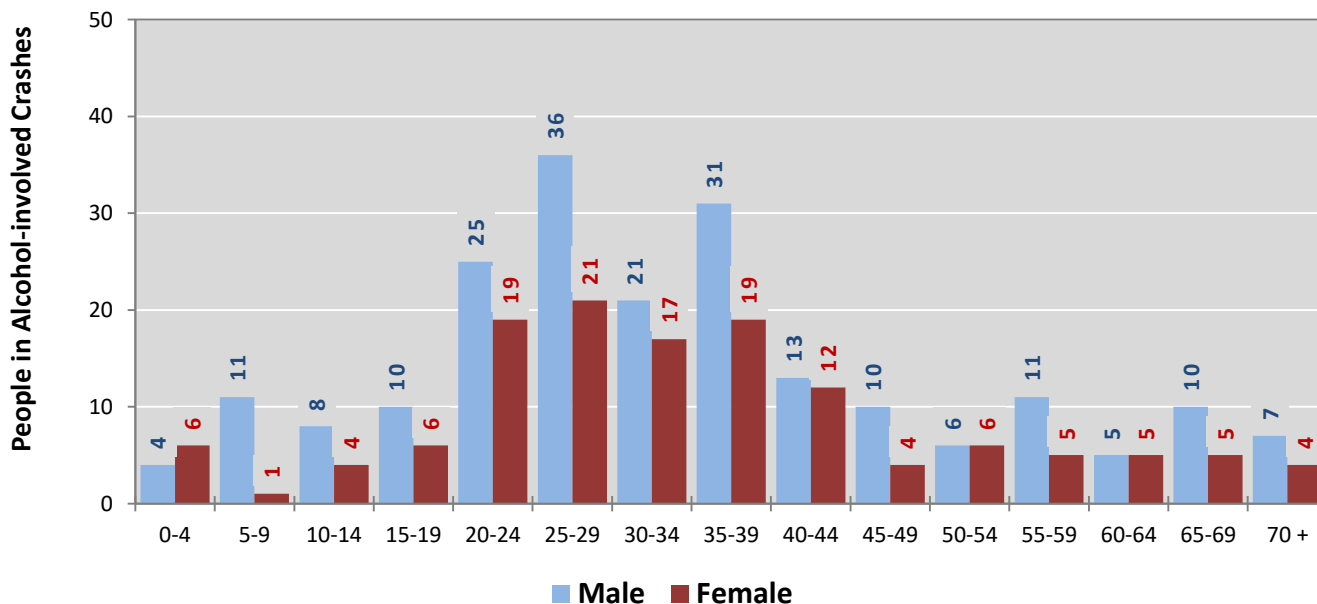


**Figure 9: People in Crashes by Age Group and Sex in McKinley County, 2018**



\* In 2018, McKinley County had 408 people in crashes for which age or sex data were missing.

**Figure 10: People in Alcohol-involved Crashes by Age Group and Sex in McKinley County, 2018**



\* In 2018, McKinley County had 42 people in alcohol-involved crashes for which age or sex data were missing.



**Table 18: Pedestrians and Pedalcyclists in Crashes by Age Group in McKinley County, 2014-2018**

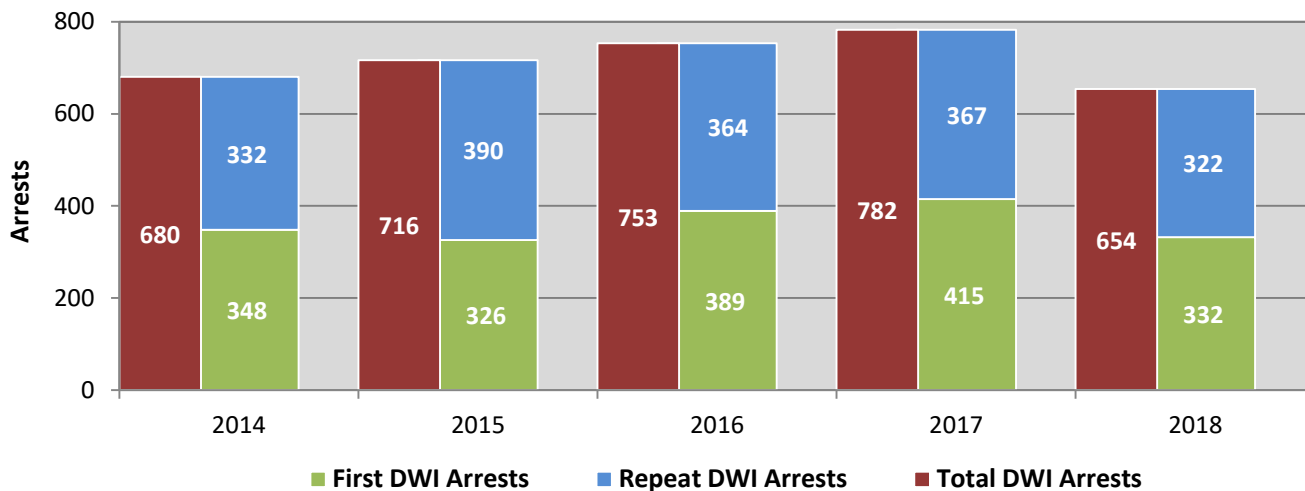
| Age Groups          | Pedestrians and Pedalcyclists <sup>1</sup> in Crashes |           |           |           |           | 5-Year Total People |
|---------------------|---|-----------|-----------|-----------|-----------|---------------------|
|                     | 2014  | 2015      | 2016      | 2017      | 2018      |                     |
| 0-4                 | 0   | 0         | 0         | 1         | 0         | 1                   |
| 5-9                 | 0   | 2         | 0         | 0         | 0         | 2                   |
| 10-14               | 3   | 1         | 0         | 0         | 2         | 6                   |
| 15-19               | 3   | 2         | 0         | 4         | 0         | 9                   |
| 20-24               | 5   | 2         | 4         | 1         | 6         | 18                  |
| 25-29               | 6   | 5         | 7         | 5         | 7         | 30                  |
| 30-34               | 10  | 1         | 2         | 8         | 4         | 25                  |
| 35-39               | 1   | 6         | 1         | 5         | 2         | 15                  |
| 40-44               | 4   | 5         | 1         | 5         | 4         | 19                  |
| 45-49               | 4   | 2         | 3         | 2         | 5         | 16                  |
| 50-54               | 3   | 9         | 3         | 2         | 2         | 19                  |
| 55-59               | 0   | 1         | 0         | 3         | 1         | 5                   |
| 60-64               | 1   | 0         | 1         | 3         | 0         | 5                   |
| 65-69               | 2   | 0         | 2         | 1         | 0         | 5                   |
| 70 +                | 0   | 1         | 1         | 1         | 1         | 4                   |
| Missing Data        | 5   | 3         | 4         | 1         | 4         | 17                  |
| <b>Total People</b> | <b>47</b>   | <b>40</b> | <b>29</b> | <b>42</b> | <b>38</b> | <b>196</b>          |

**Table 19: Pedestrians and Pedalcyclists in Crashes by Alcohol Involvement and Severity of Injuries in McKinley County, 2018**

| Alcohol Involvement        | Pedestrians and Pedalcyclists <sup>1</sup> in Crashes |                                      |                                    |                             |                              | Total People |
|----------------------------|---|--------------------------------------|------------------------------------|-----------------------------|------------------------------|--------------|
|                            | Fatalities (Class K)                                  | Suspected Serious Injuries (Class A) | Suspected Minor Injuries (Class B) | Possible Injuries (Class C) | No Apparent Injury (Class O) |              |
| <b>Total Pedalcyclists</b> | <b>0</b>  | <b>0</b>                             | <b>2</b>                           | <b>5</b>                    | <b>1</b>                     | <b>8</b>     |
| Involved                   | 0   | 0                                    | 0                                  | 1                           | 0                            | 1            |
| Not Involved               | 0   | 0                                    | 2                                  | 4                           | 1                            | 7            |
| <b>Total Pedestrians</b>   | <b>8</b>  | <b>10</b>                            | <b>6</b>                           | <b>5</b>                    | <b>1</b>                     | <b>30</b>    |
| Involved                   | 6   | 7                                    | 3                                  | 2                           | 0                            | 18           |
| Not Involved               | 2   | 3                                    | 3                                  | 3                           | 1                            | 12           |
| <b>Total People</b>        | <b>8</b>  | <b>10</b>                            | <b>8</b>                           | <b>10</b>                   | <b>2</b>                     | <b>38</b>    |

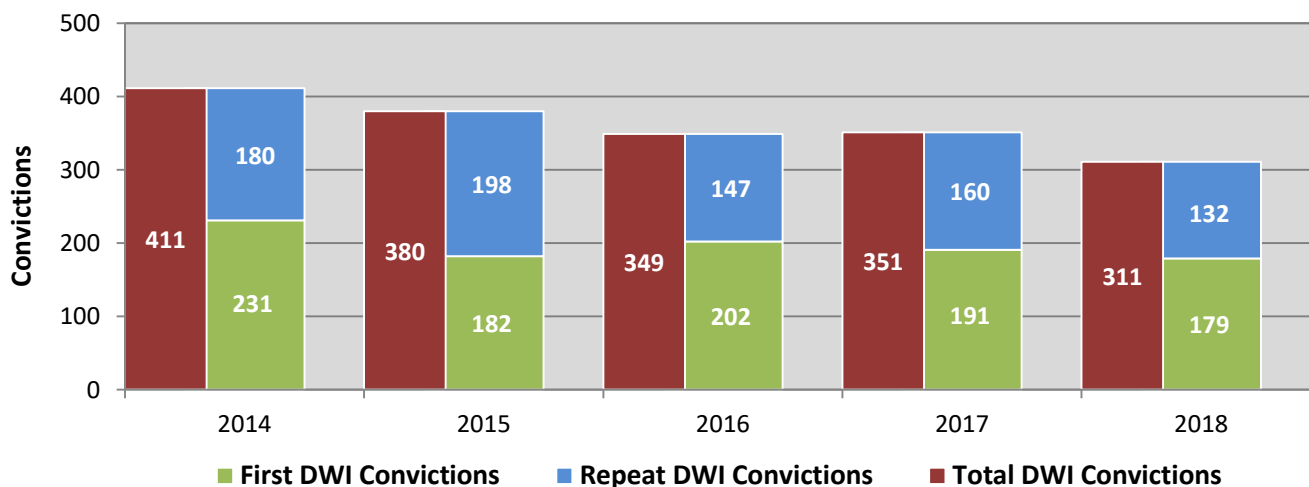
<sup>1</sup> Pedestrians and pedalcyclists are counted as non-motorized vehicles, when involved in a crash with a motor vehicle.

**Figure 11: DWI Arrests in McKinley County,  
Showing First and Repeat DWI Arrests, 2014-2018**



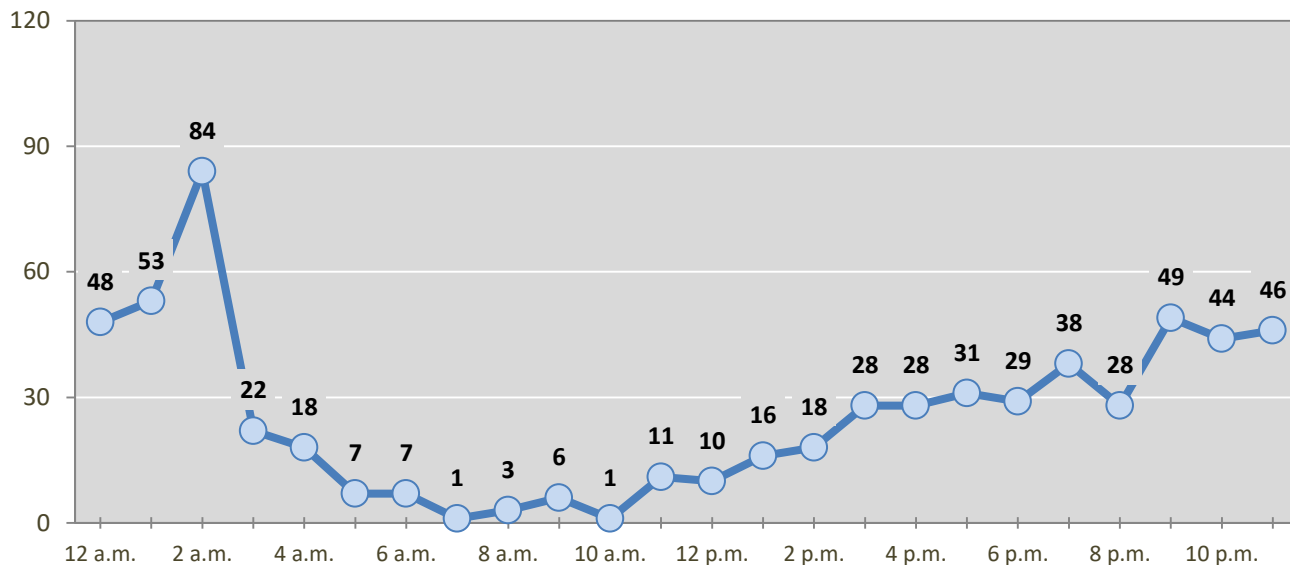
\*Values are based upon the year of the arrest.

**Figure 12: DWI Convictions in McKinley County,  
Showing First and Repeat DWI Convictions, 2014-2018**



\*Values are based upon the year of the conviction.

**Figure 13: DWI Arrests by Hour in McKinley County, 2018**



\* In 2018, McKinley County had 28 arrests for which hour data were missing.

**Table 20: DWI Arrests by Day of Week in McKinley County, 2014-2018**

| Day of Week          | Year       |            |            |            |            | 5-Year Average |
|----------------------|------------|------------|------------|------------|------------|----------------|
|                      | 2014       | 2015       | 2016       | 2017       | 2018       |                |
| Sunday               | 106        | 116        | 118        | 130        | 113        | 117            |
| Monday               | 50         | 59         | 56         | 67         | 53         | 57             |
| Tuesday              | 68         | 67         | 82         | 69         | 59         | 69             |
| Wednesday            | 71         | 75         | 90         | 80         | 66         | 76             |
| Thursday             | 93         | 113        | 105        | 120        | 87         | 104            |
| Friday               | 119        | 124        | 138        | 121        | 111        | 123            |
| Saturday             | 173        | 162        | 164        | 195        | 165        | 172            |
| <b>Total Arrests</b> | <b>680</b> | <b>716</b> | <b>753</b> | <b>782</b> | <b>654</b> | <b>717</b>     |

**Table 21: Driver First DWI Arrests by Age Group in McKinley County, 2014-2018**

| Age Groups           | Driver First DWI Arrests <sup>1</sup> |            |            |            |            |
|----------------------|---------------------------------------|------------|------------|------------|------------|
|                      | 2014                                  | 2015       | 2016       | 2017       | 2018       |
| 15-19                | 19                                    | 9          | 13         | 13         | 10         |
| 20-24                | 81                                    | 90         | 93         | 84         | 72         |
| 25-29                | 89                                    | 91         | 110        | 122        | 88         |
| 30-34                | 54                                    | 45         | 57         | 61         | 72         |
| 35-39                | 39                                    | 33         | 37         | 41         | 35         |
| 40-44                | 28                                    | 13         | 28         | 36         | 23         |
| 45-49                | 16                                    | 16         | 18         | 21         | 15         |
| 50-54                | 11                                    | 14         | 13         | 24         | 9          |
| 55-59                | 5                                     | 8          | 10         | 8          | 4          |
| 60-64                | 3                                     | 7          | 5          | 1          | 4          |
| 65-69                | 1                                     | 0          | 0          | 3          | 0          |
| 70 +                 | 2                                     | 0          | 5          | 1          | 0          |
| Missing Data         | 0                                     | 0          | 0          | 0          | 0          |
| <b>Total Drivers</b> | <b>348</b>                            | <b>326</b> | <b>389</b> | <b>415</b> | <b>332</b> |

<sup>1</sup> Values are based upon the year of the arrest.

**Table 22: Driver Repeat DWI Arrests by Age Group in McKinley County, 2014-2018**

| Age Groups           | Driver Repeat DWI Arrests <sup>1</sup> |            |            |            |            |
|----------------------|--|------------|------------|------------|------------|
|                      | 2014                                   | 2015       | 2016       | 2017       | 2018       |
| 15-19                | 1                                      | 3          | 3          | 1          | 2          |
| 20-24                | 27                                     | 31         | 28         | 17         | 23         |
| 25-29                | 57                                     | 72         | 68         | 74         | 54         |
| 30-34                | 64                                     | 56         | 61         | 63         | 65         |
| 35-39                | 44                                     | 58         | 62         | 62         | 47         |
| 40-44                | 52                                     | 56         | 49         | 53         | 37         |
| 45-49                | 24                                     | 38         | 37         | 42         | 36         |
| 50-54                | 26                                     | 39         | 30         | 25         | 22         |
| 55-59                | 18                                     | 22         | 15         | 14         | 20         |
| 60-64                | 11                                     | 9          | 7          | 11         | 13         |
| 65-69                | 4                                      | 5          | 4          | 3          | 3          |
| 70 +                 | 3                                      | 1          | 0          | 2          | 0          |
| Missing Data         | 1                                      | 0          | 0          | 0          | 0          |
| <b>Total Drivers</b> | <b>332</b>                             | <b>390</b> | <b>364</b> | <b>367</b> | <b>322</b> |

<sup>1</sup> Values are based upon the year of the arrest.

**Table 23: Driver First DWI Convictions by Age Group in McKinley County, 2014-2018**

| Age Groups           | Driver First DWI Convictions <sup>1</sup> |            |            |            |            |
|----------------------|---|------------|------------|------------|------------|
|                      | 2014                                      | 2015       | 2016       | 2017       | 2018       |
| 15-19                | 6   | 6          | 3          | 5          | 3          |
| 20-24                | 48  | 48         | 56         | 37         | 41         |
| 25-29                | 64  | 47         | 61         | 65         | 49         |
| 30-34                | 35  | 26         | 36         | 35         | 31         |
| 35-39                | 25  | 21         | 18         | 16         | 18         |
| 40-44                | 28  | 8          | 11         | 11         | 15         |
| 45-49                | 11  | 6          | 4          | 10         | 6          |
| 50-54                | 4   | 12         | 5          | 5          | 11         |
| 55-59                | 4   | 4          | 7          | 5          | 3          |
| 60-64                | 3   | 4          | 1          | 2          | 0          |
| 65-69                | 2   | 0          | 0          | 0          | 1          |
| 70 +                 | 1   | 0          | 0          | 0          | 0          |
| Missing Data         | 0   | 0          | 0          | 0          | 1          |
| <b>Total Drivers</b> | <b>231</b>                                | <b>182</b> | <b>202</b> | <b>191</b> | <b>179</b> |

<sup>1</sup> Values are based upon the year of the conviction.

**Table 24: Driver Repeat DWI Convictions by Age Group in McKinley County, 2014-2018**

| Age Groups           | Driver Repeat DWI Convictions <sup>1</sup> |            |            |            |            |
|----------------------|--|------------|------------|------------|------------|
|                      | 2014                                       | 2015       | 2016       | 2017       | 2018       |
| 15-19                | 0  | 1          | 0          | 0          | 0          |
| 20-24                | 8  | 15         | 9          | 6          | 7          |
| 25-29                | 31   | 28         | 24         | 32         | 16         |
| 30-34                | 30   | 29         | 23         | 24         | 24         |
| 35-39                | 23   | 35         | 27         | 23         | 21         |
| 40-44                | 29   | 35         | 22         | 26         | 18         |
| 45-49                | 19   | 20         | 16         | 23         | 16         |
| 50-54                | 21   | 20         | 15         | 14         | 14         |
| 55-59                | 10   | 11         | 6          | 7          | 9          |
| 60-64                | 6  | 3          | 4          | 3          | 5          |
| 65-69                | 2  | 0          | 1          | 2          | 2          |
| 70 +                 | 0  | 1          | 0          | 0          | 0          |
| Missing Data         | 1  | 0          | 0          | 0          | 0          |
| <b>Total Drivers</b> | <b>180</b>                                 | <b>198</b> | <b>147</b> | <b>160</b> | <b>132</b> |

<sup>1</sup> Values are based upon the year of the conviction.

**Table 25: Court Disposition of DWI Arrests for McKinley County and the State, 2018**

| Court Disposition of DWI Arrest <sup>1</sup>     | McKinley County | Statewide | Percent of Statewide |
|--|-----------------|-----------|----------------------|
| Total DWI Arrests                                | 654             | 10,205    | 6.4%                 |
| DWI Arrests Resulting in Convictions             | 256             | 4,641     | 5.5%                 |
| DWI Arrests Resulting in Dismissals <sup>2</sup> | 25              | 880       | 2.8%                 |
| DWI Arrests Awaiting Disposition                 | 373             | 4,684     | 8.0%                 |

<sup>1</sup> These are the number of DWI arrests in 2018 and whether the case resulted in a conviction or dismissal, or is still awaiting court disposition, as reported in the NM MVD Citation Tracking System (CTS) as of July 2019.

<sup>2</sup> For this table, a very small number of "not guilty" rulings may be included in the category Dismissals.

**Table 26: Average Number of Days from Date of DWI Arrest to Date of Court Disposition in McKinley County and the State, 2018**

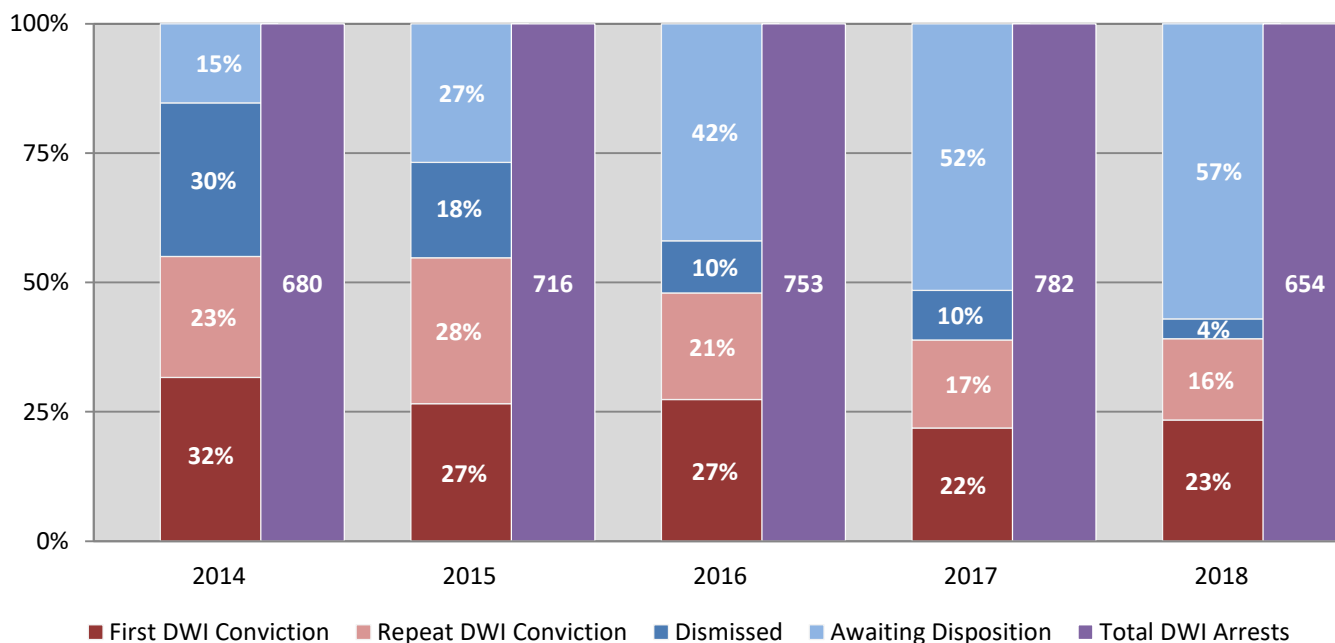
| Court Disposition | Average Number of Days |           | Deviation from Statewide Average |
|-------------------|------------------------|-----------|----------------------------------|
|                   | McKinley County        | Statewide |                                  |
| DWI Conviction    | 118                    | 145       | -27                              |
| DWI Dismissal     | 160                    | 153       | 7                                |

**Table 27: Court Disposition of DWI Arrests in McKinley County, 2014-2018**

| Year of DWI Arrest <sup>1</sup> | Court Disposition    |                       |           |                      | Total DWI Arrests |
|---------------------------------|----------------------|-----------------------|-----------|----------------------|-------------------|
|                                 | First DWI Conviction | Repeat DWI Conviction | Dismissed | Awaiting Disposition |                   |
| 2014                            | 215                  | 159                   | 202       | 104                  | 680               |
| 2015                            | 190                  | 202                   | 132       | 192                  | 716               |
| 2016                            | 206                  | 155                   | 76        | 316                  | 753               |
| 2017                            | 171                  | 133                   | 75        | 403                  | 782               |
| 2018                            | 153                  | 103                   | 25        | 373                  | 654               |

<sup>1</sup> Values are based upon the year of the arrest.

**Figure 14: Court Dispositions by Percentage of DWI Arrests in McKinley County, 2014-2018**



\*Table 27 contains the values used to calculate percentages shown in Figure 14.