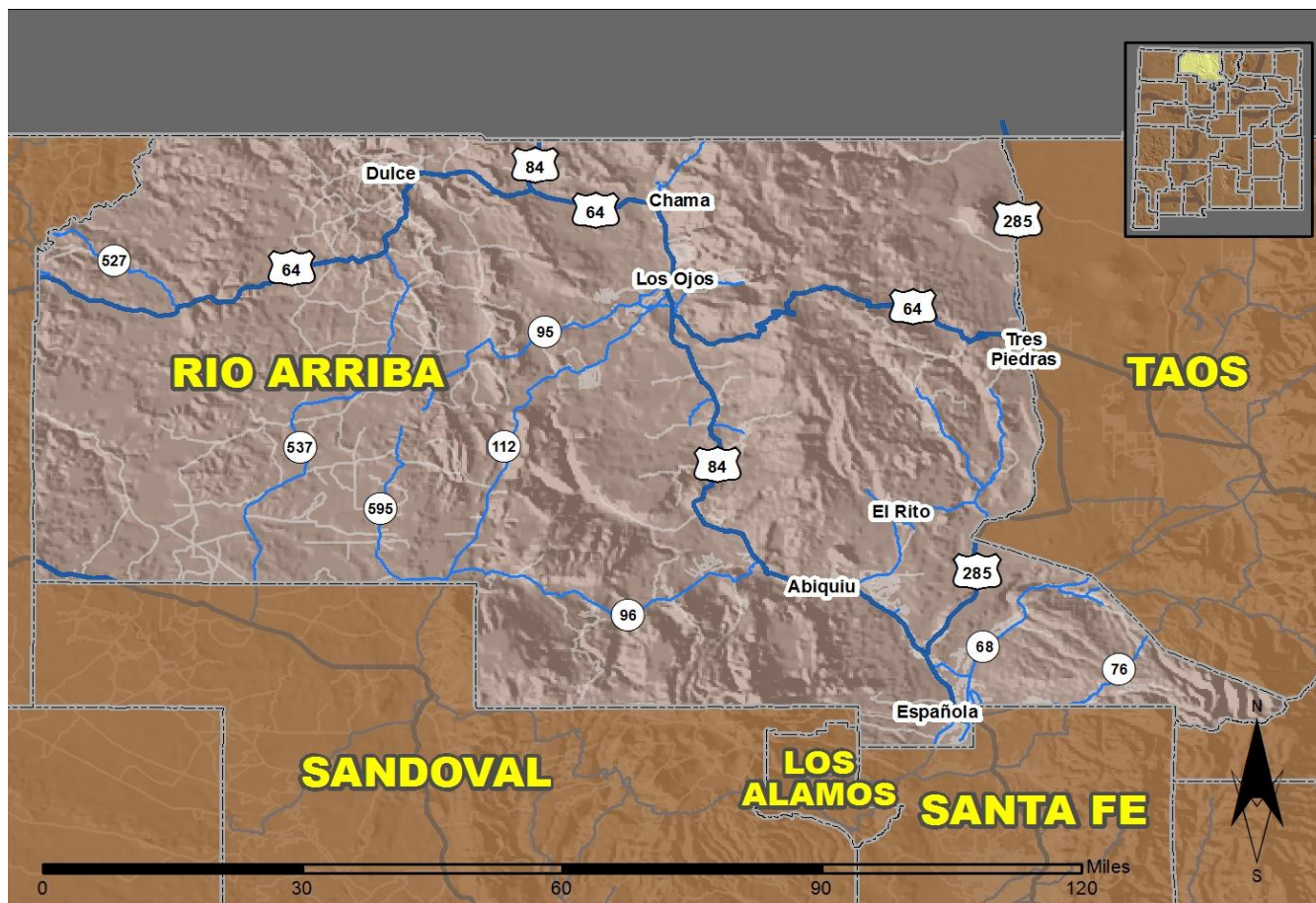


2018 Community Report

Rio Arriba County



Produced for the New Mexico Department of Transportation,
Traffic Safety Division, Traffic Records Bureau,
Under Contract 6093 by the University of New Mexico,
Geospatial and Population Studies, Traffic Research Unit

Distributed in compliance with New Mexico Statute 66-7-214
as a reference source regarding New Mexico traffic crashes

For the purposes of this report, data are compiled by the University of New Mexico, Geospatial and Population Studies, Traffic Research Unit (TRU), on behalf of the New Mexico Department of Transportation (NMDOT). Data in this report may differ from that in other data sources, such as the Federal Fatality Analysis Reporting System (FARS), due to the timing of publications and rules for how data are compiled and maintained in Federal vs. State databases. If you have questions regarding this report, please contact the Traffic Safety Division at 505-827-0427.

<https://gps.unm.edu/tru/crash-reports/community-reports>

Definitions

Aggravated DWI – A driver arrested for 1) driving with a BAC of 0.16 or higher, 2) driving under the influence of alcohol or drugs and causing bodily injury to a human being as a result, or 3) driving under the influence of alcohol or drugs and refusing to submit to a BAC test at the time of arrest for DWI.

Alcohol-involved Crash – A crash for which the Uniform Crash Report indicated that 1) a DWI citation was issued, 2) alcohol was a contributing factor, or 3) a person in control of a vehicle (including a pedestrian or pedalcyclist) was suspected of being under the influence of alcohol.

Alcohol-involved Driver – A person in control of a vehicle who was cited for DWI or indicated on the Uniform Crash Report as being either suspected or determined by testing to be under the influence of alcohol. There can be multiple alcohol-involved drivers in a single alcohol-involved crash.

Crash – A reported incident on a public roadway involving one or more motor vehicles that resulted in death, personal injury, or at least \$500 in property damage. Crashes on private property (such as a parking lot) are not included.

DWI Arrest (Citation) – In this report, a DWI arrest (a.k.a. a DWI citation) is a driver arrested for either DWI or aggravated DWI. New Mexico’s legal limit for presumption of driving while intoxicated (DWI) is 0.08 for non-commercial drivers older than 21 years of age, 0.04 for commercial vehicle drivers, and 0.02 for drivers younger than 21 years of age.

DWI Conviction – A driver convicted of driving under the intoxicating influence of alcohol, narcotics, or pathogenic drugs, including aggravated DWI.

Fatal Crash – A crash in which at least one person was killed. More than one person can be killed in a single fatal crash.

Fatalities – The number of people killed in a crash. The terms “killed” and “deaths” are synonymous with “fatalities.” A fatality is crash-related if it occurs at the time of the crash or if the person(s) involved in the crash dies within 30 days.

Injury Crash – A reported crash in which at least one person was injured. Injury crashes involve at least one suspected serious injury (Class A), suspected minor injury (Class B), or possible injury (Class C). Fatal crashes are not included.

Missing Data – An indication that the applicable field on the UCR form was left blank or contained an invalid code. Starting with crashes that occurred in 2012, improvements in the identification of missing data in the NMDOT crash database led to an increase in the reported amount of missing data.

Pedalcyclist – A person riding a mechanism of transport that is powered solely by pedals (a.k.a. bicyclist).

Pedestrian – A person on foot, walking, running, jogging, hiking, sitting or lying down who is involved in a motor vehicle traffic crash.

Sources

Crash Data – New Mexico Department of Transportation, Traffic Safety Division, Traffic Records Bureau, Traffic Crash Database, as of the report date below. Crash data are compiled using NMDOT Uniform Crash Reports (UCR), submitted by law enforcement agencies in the state, for any incident on a public roadway involving one or more motor vehicles that resulted in death, injury, or at least \$500 in property damage. These reports are processed by the NMDOT Traffic Records Bureau and analyzed by the University of New Mexico, Geospatial and Population Studies, Traffic Research Unit (TRU).

DWI Citation Tracking System (CTS) – New Mexico Taxation and Revenue Department (NM TRD), Motor Vehicle Division (MVD), DWI Citation Tracking System (CTS), as of February 2019. Repeat offenders are identified by the combination of account key, arrest date, and citation number. County data are based upon the county where the arrest took place. City data are based upon the city where the offender resides.

Urban Areas – Areas defined by the New Mexico Department of Transportation, Asset Management and Planning, 2010 U.S. Census Urbanized Area Boundaries, NMDOT-Adjusted, and U.S. Census Urban Clusters, August 21, 2013. Urban areas for crash years 2013-2017 include a 1/2 mile buffer extending out from those urban boundaries. In crashes before 2013, “urban” was defined as a town or city with a population of at least 2,500 people.

**Table 1: Total Crashes and Alcohol-involved Crashes by
Crash Severity in Rio Arriba County, 2009-2018**

Year	Total Crashes				Alcohol-involved Crashes			
	Fatal	Injury	Property Damage Only	Total	Fatal	Injury	Property Damage Only	Total
2009	12	171	416	599	7	39	42	88
2010	6	156	360	522	3	23	20	46
2011	11	141	329	481	6	25	19	50
2012	17	177	442	636	6	23	35	64
2013	11	163	415	589	5	29	23	57
2014	8	169	425	602	3	19	20	42
2015	11	228	447	686	5	31	22	58
2016	9	261	589	859	8	35	20	63
2017	7	242	509	758	3	25	21	49
2018	13	208	530	751	7	23	19	49

**Figure 1: Alcohol-involved Fatal and Injury Crashes Compared with
Non-alcohol-involved Fatal and Injury Crashes in Rio Arriba County, 2009-2018**

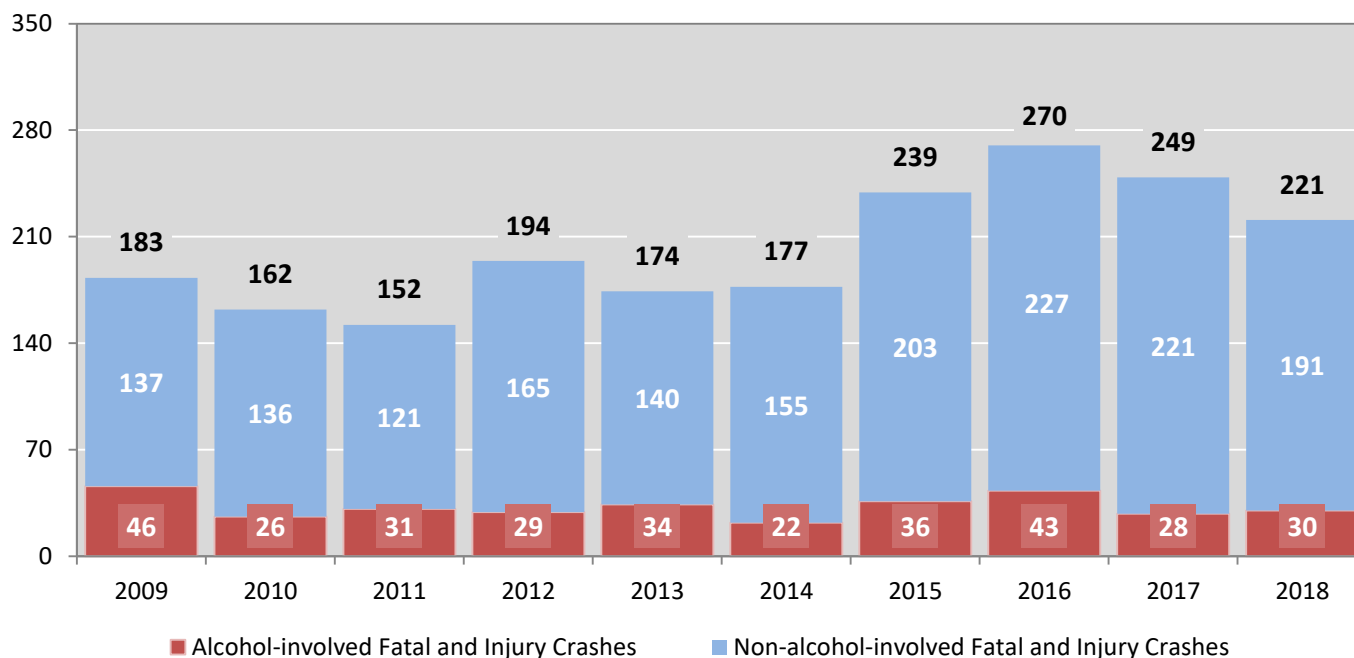


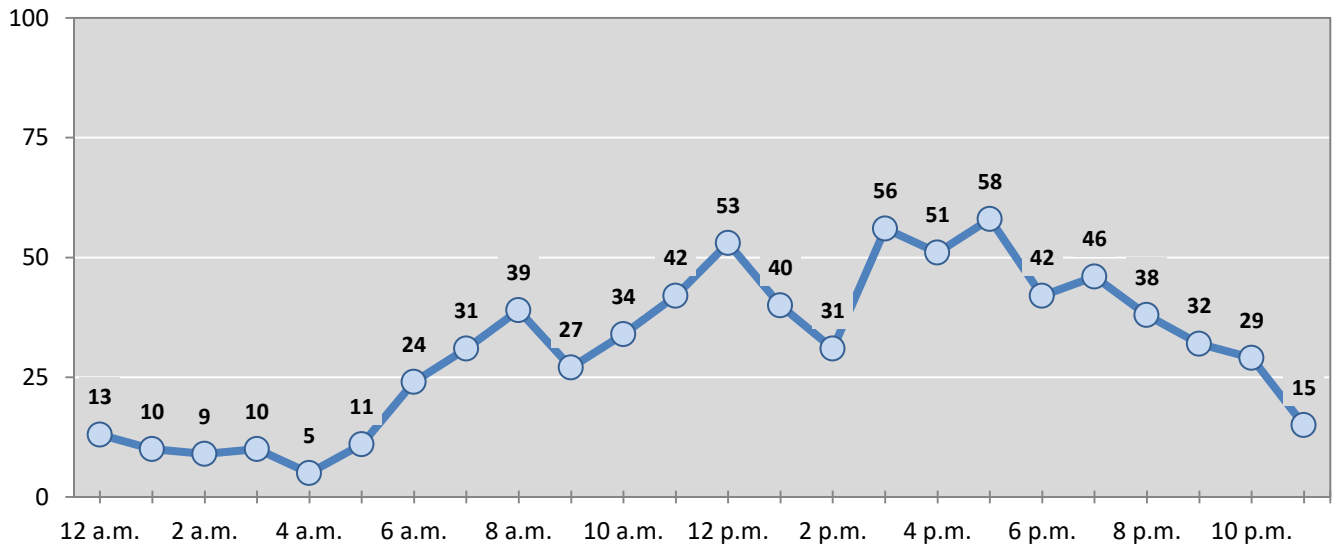
Table 2: Crashes by Month in Rio Arriba County, 2014-2018

Month	Crashes					5-Year Average
	2014	2015	2016	2017	2018	
January	41	64	80	55	55	59
February	52	48	71	52	39	52
March	48	52	49	56	51	51
April	51	32	68	59	59	54
May	40	44	61	62	71	56
June	48	45	64	58	46	52
July	43	86	91	69	65	71
August	51	68	67	67	55	62
September	46	65	83	83	77	71
October	68	59	74	59	83	69
November	49	54	75	71	69	64
December	65	69	76	67	81	72
Total Crashes	602	686	859	758	751	731

Table 3: Alcohol-involved Crashes by Month in Rio Arriba County, 2014-2018

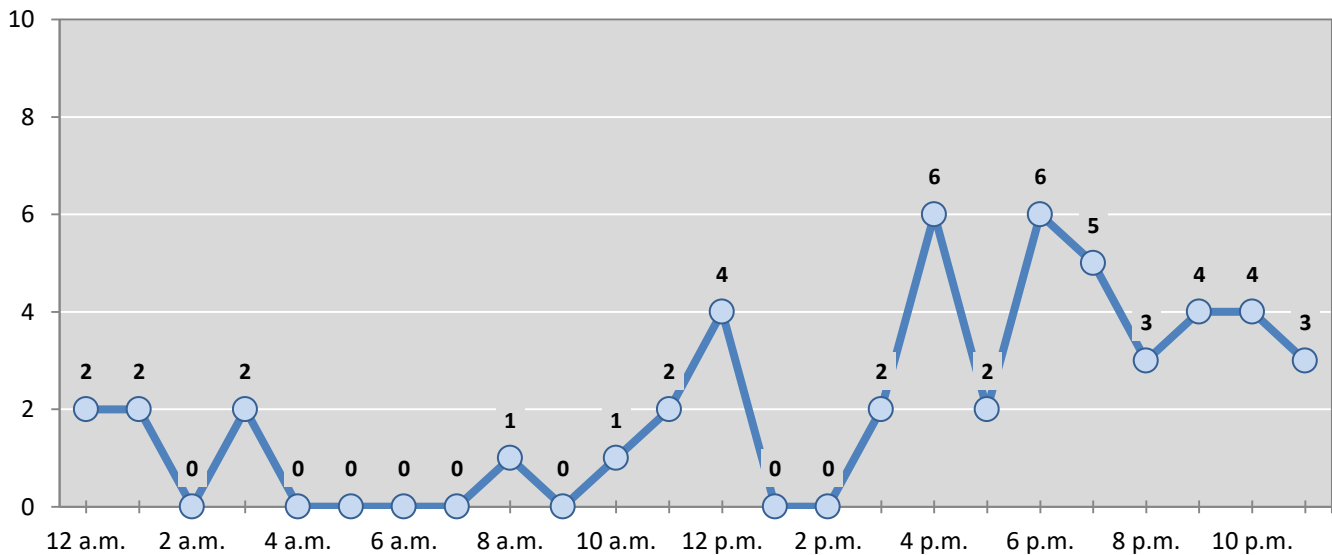
Month	Alcohol-involved Crashes					5-Year Average
	2014	2015	2016	2017	2018	
January	4	4	12	7	1	6
February	0	4	4	5	5	4
March	2	4	4	6	7	5
April	4	4	1	4	2	3
May	7	7	4	0	4	4
June	4	6	3	3	3	4
July	5	11	6	8	3	7
August	1	4	5	1	5	3
September	3	5	4	2	10	5
October	3	3	7	3	4	4
November	2	2	4	5	3	3
December	7	4	9	5	2	5
Total Crashes	42	58	63	49	49	52

Figure 2: Crashes by Hour in Rio Arriba County, 2018



* In 2018, Rio Arriba County had 5 crashes for which hour data were missing.

Figure 3: Alcohol-involved Crashes by Hour in Rio Arriba County, 2018



* In 2018, Rio Arriba County had 0 alcohol-involved crashes for which hour data were missing.

Table 4: Alcohol-involved Crashes by Day of Week in Rio Arriba County, 2014-2018

Day of Week	Alcohol-involved Crashes					5-Year Average
	2014	2015	2016	2017	2018	
Sunday	7	8	14	6	9	9
Monday	2	9	4	5	2	4
Tuesday	3	6	5	6	6	5
Wednesday	10	4	7	4	6	6
Thursday	5	6	9	6	8	7
Friday	5	12	9	7	7	8
Saturday	10	13	15	15	11	13
Total Crashes	42	58	63	49	49	52

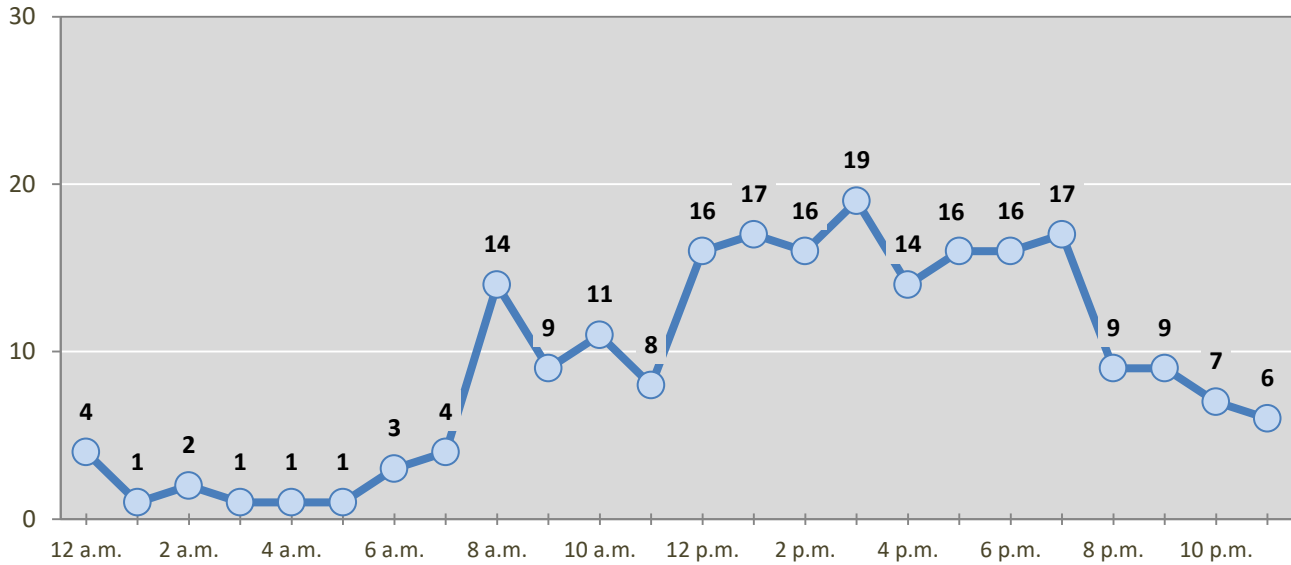
Table 5: Fatal and Injury Crashes by Day of Week in Rio Arriba County, 2014-2018

Day of Week	Fatal and Injury Crashes					5-Year Average
	2014	2015	2016	2017	2018	
Sunday	25	33	31	28	29	29
Monday	23	35	29	34	26	29
Tuesday	25	40	26	46	23	32
Wednesday	33	36	44	39	32	37
Thursday	24	28	46	36	30	33
Friday	25	40	48	39	43	39
Saturday	22	27	46	27	38	32
Total Crashes	177	239	270	249	221	231

Table 6: Pedestrian and Pedalcyclist Crashes by Day of Week in Rio Arriba County, 2014-2018

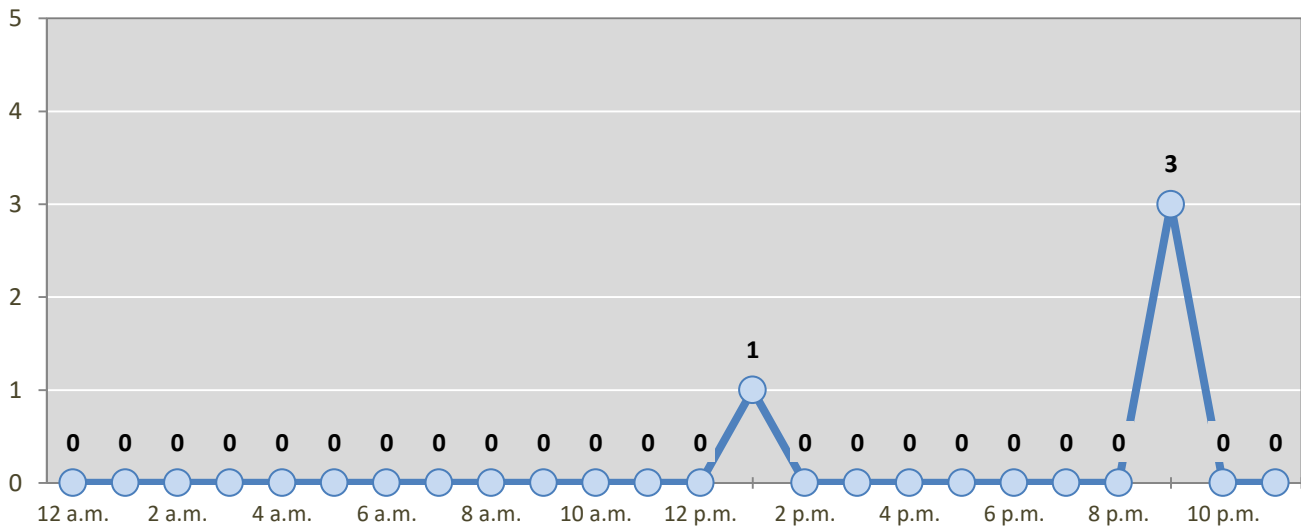
Day of Week	Pedestrian and Pedalcyclist Crashes					5-Year Average
	2014	2015	2016	2017	2018	
Sunday	1	0	1	0	0	0
Monday	1	1	2	1	1	1
Tuesday	2	0	1	1	0	1
Wednesday	0	1	1	1	2	1
Thursday	0	0	2	0	0	0
Friday	0	2	1	2	1	1
Saturday	0	2	1	1	0	1
Total Crashes	4	6	9	6	4	6

Figure 4: Fatal and Injury Crashes by Hour in Rio Arriba County, 2018



* In 2018, Rio Arriba County had 0 crashes for which hour data were missing.

Figure 5: Pedestrian and Pedalcyclist Crashes by Hour in Rio Arriba County, 2018



* In 2018, Rio Arriba County had 0 crashes for which hour data were missing.

Table 7: Severity of Injuries to People in Crashes by Rural and Urban Location in Rio Arriba County, 2018

Urban and Rural Locations by Alcohol-involvement	People in Crashes by Severity of Injuries					Total People
	Fatalities (Class K)	Suspected Serious Injuries (Class A)	Suspected Minor Injuries (Class B)	Possible Injuries (Class C)	No Apparent Injuries (Class O)	
People in Alcohol-involved Crashes	7	5	23	14	56	105
Urban	2	2	10	9	36	59
Rural Non-Interstate	5	3	13	5	20	46
Rural Interstate	0	0	0	0	0	0
People in Crashes	14	25	102	201	1,288	1,630
Urban	3	5	37	149	724	918
Rural Non-Interstate	11	20	65	52	564	712
Rural Interstate	0	0	0	0	0	0
Percent in Alcohol-involved Crashes	50%	20%	23%	7%	4%	6%

Table 8: Total Crashes by Roadway System and Crash Severity in Rio Arriba County, 2014-2018

Crash Severity by System	Crashes by Year					5-Year Average
	2014	2015	2016	2017	2018	
Total Rural Interstate	1	0	0	0	0	0
Fatal Crash	0	0	0	0	0	0
Injury Crash	0	0	0	0	0	0
Property Damage Only Crash	1	0	0	0	0	0
Total Rural Non-Interstate	301	283	343	292	380	320
Fatal Crash	6	5	5	7	10	7
Injury Crash	71	76	74	64	90	75
Property Damage Only Crash	224	202	264	221	280	238
Total Urban	300	403	516	466	371	412
Fatal Crash	2	6	4	0	3	3
Injury Crash	98	152	187	178	118	147
Property Damage Only Crash	200	245	325	288	250	262

Table 9: Total Crashes by Crash Classification in Rio Arriba County, 2014-2018

Crash Classification	Total Crashes by Year					5-Year Average
	2014	2015	2016	2017	2018	
Animal	121	102	133	128	155	128
Fixed Object	79	83	87	76	91	83
Other (Non-Collision)	13	11	23	29	14	18
Other (Object)	20	21	25	23	26	23
Other Vehicle	273	365	486	419	374	383
Overturn/Rollover	54	27	49	40	48	44
Parked Vehicle	17	11	8	15	13	13
Pedalcyclist	0	1	1	3	0	1
Pedestrian	3	6	8	3	4	5
Railroad Train	0	0	1	0	0	0
Rollover	1	43	26	18	17	21
Vehicle on Other Road	7	10	6	4	6	7
Missing Data	14	6	6	0	3	6
Total Crashes	602	686	859	758	751	731

Table 10: Vehicles in Crashes by Vehicle Type in Rio Arriba County, 2014-2018

Vehicle Type ¹	Vehicles in Crashes by Vehicle Type					5-Year Average
	2014	2015	2016	2017	2018	
Bus	3	2	10	4	4	5
Motorcycle	22	22	24	27	19	23
Passenger	345	479	706	614	629	555
Pedalcyclist	0	1	1	3	0	1
Pedestrian	4	6	9	3	4	5
Pickup	225	256	329	282	255	269
Semi	25	22	45	32	20	29
Van/SUV/4WD	154	184	224	234	196	198
Other Vehicle	7	21	6	1	1	7
Missing Data	145	118	55	48	45	82
Total Vehicles	930	1,111	1,409	1,248	1,173	1,174

¹ Pedestrians and pedalcyclists are counted as non-motorized vehicles, when involved in a crash with a motor vehicle. See Page 17 for data on drivers of non-motorized vehicles in crashes (i.e. pedestrians and pedalcyclists).

Table 11: Motor Vehicle Drivers in Crashes by Vehicle Type and Age Group in Rio Arriba County, 2018

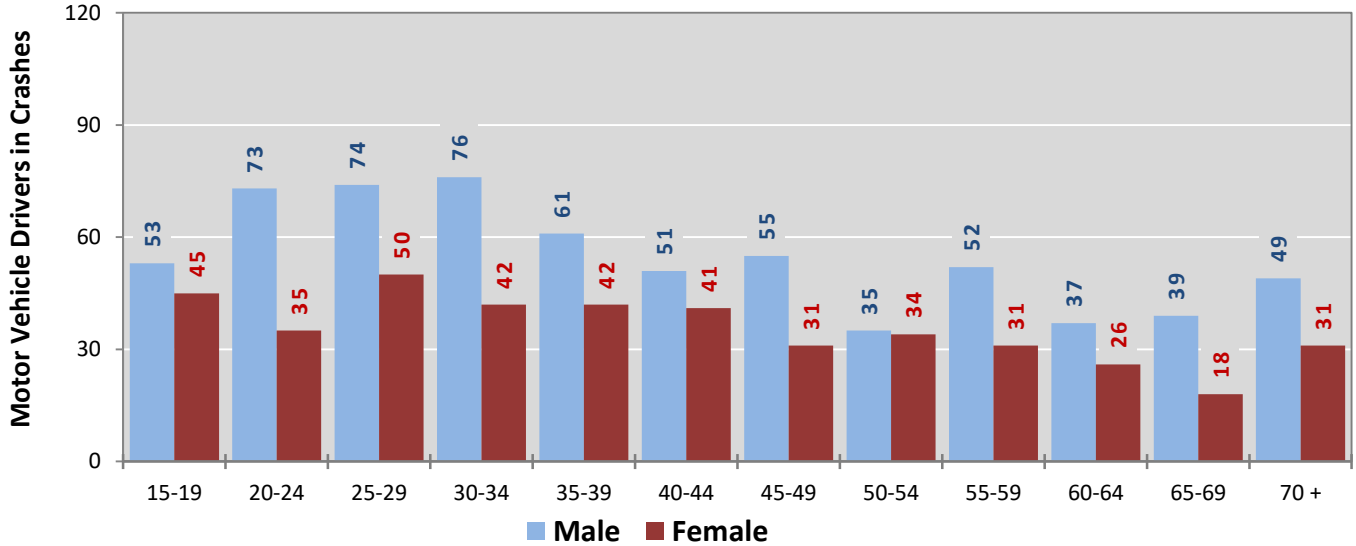
Age Groups	Motor Vehicle ¹ Drivers by Vehicle Type and Age Group								Total Drivers
	Bus	Motor-cycle	Passenger	Pickup	Semi	Van 4WD SUV	Other Vehicle	Missing Data	
15-19	0	1	59	23	0	15	0	1	99
20-24	0	0	81	18	1	9	0	1	110
25-29	0	2	72	23	3	24	0	1	125
30-34	0	0	72	22	1	20	0	3	118
35-39	0	1	60	18	1	23	0	0	103
40-44	0	2	51	20	3	14	0	3	93
45-49	1	3	37	23	4	16	0	2	86
50-54	0	4	39	16	1	9	0	1	70
55-59	2	3	37	22	3	16	0	0	83
60-64	1	0	32	17	2	11	1	0	64
65-69	0	2	24	19	0	11	0	2	58
70 +	0	1	39	20	1	18	0	1	80
Missing Data	0	0	26	14	0	10	0	30	80
Total Drivers	4	19	629	255	20	196	1	45	1,169

Table 12: Alcohol-involved Motor Vehicle Drivers in Crashes by Vehicle Type and Age Group in Rio Arriba County, 2018

Age Groups	Alcohol-involved Motor Vehicle ¹ Drivers by Vehicle Type and Age Group								Total Drivers
	Bus	Motor-cycle	Passenger	Pickup	Semi	Van 4WD SUV	Other Vehicle	Missing Data	
15-19	0	0	3	1	0	0	0	0	4
20-24	0	0	4	1	0	0	0	0	5
25-29	0	0	6	1	0	2	0	0	9
30-34	0	0	3	0	0	0	0	0	3
35-39	0	0	2	0	0	1	0	0	3
40-44	0	0	3	2	0	1	0	0	6
45-49	0	0	1	3	0	0	0	0	4
50-54	0	0	2	1	0	0	0	0	3
55-59	0	0	2	1	0	1	0	0	4
60-64	0	0	2	1	0	0	0	0	3
65-69	0	0	0	0	0	0	0	0	0
70 +	0	0	1	0	0	0	0	0	1
Missing Data	0	0	1	0	0	0	0	0	1
Total Drivers	0	0	30	11	0	5	0	0	46

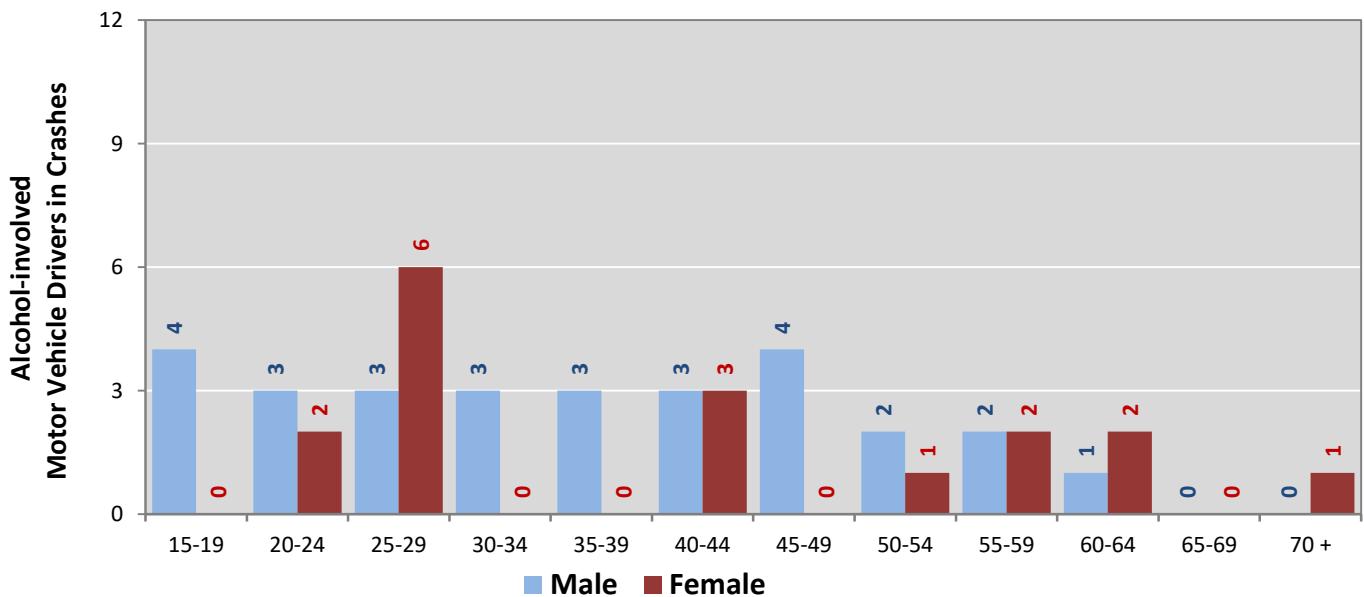
¹ See Page 17 for data on drivers of non-motorized vehicles in crashes (i.e. pedestrians and pedalcyclists).

Figure 6: Motor Vehicle Drivers in Crashes by Age Group and Sex in Rio Arriba County, 2018



* In 2018, Rio Arriba County had 88 drivers in crashes for which age or sex data were missing.

Figure 7: Alcohol-involved Motor Vehicle Drivers in Crashes by Age Group and Sex in Rio Arriba County, 2018



* In 2018, Rio Arriba County had 1 drivers in crashes for which age or sex data were missing.

Table 13: Alcohol-involved Motor Vehicle Drivers Under 21 (Ages 15-20) in Crashes in Rio Arriba County, 2014-2018

Age ¹	Year					5-Year Total
	2014	2015	2016	2017	2018	
15	0	0	0	0	0	0
16	1	0	0	0	0	1
17	1	0	0	0	0	1
18	1	1	1	0	2	5
19	0	1	2	0	2	5
20	1	0	1	3	0	5
Total Drivers	4	2	4	3	4	17

Table 14: Motor Vehicle Drivers Under 21 (Ages 15-20) in Crashes by Age, Sex and Alcohol-involvement in Rio Arriba County, 2018

Age ¹	Total Drivers				Alcohol-involved Drivers			
	Sex		Total Drivers	Percent of Total	Sex		Total Drivers	Percent of Total
	Male	Female			Male	Female		
15	3	2	5	4%	0	0	0	0%
16	3	7	10	8%	0	0	0	0%
17	18	15	33	26%	0	0	0	0%
18	14	11	25	20%	2	0	2	50%
19	15	10	25	20%	2	0	2	50%
20	22	7	29	23%	0	0	0	0%
Total Drivers	75	52	127	100%	4	0	4	100%

¹ For analysis of drivers under age 21, when the driver age or sex are not identified on the crash report (typically hit-and-run drivers), the driver data are considered unreliable and are excluded from the analysis.

**Table 15: Frequency of Contributing Factors in Crashes
by Crash Severity in Rio Arriba County, 2018**

Contributing Factors	Frequency of Contributing Factor ¹ by Crash Severity			
	Frequency in Fatal Crashes	Frequency in Injury Crashes	Frequency in Property Damage Only Crashes	Frequency in All Crashes
Human	43	333	550	926
Driver Inattention	5	94	186	285
Failed to Yield Right of Way	0	30	55	85
Following Too Closely	0	27	55	82
Excessive Speed	5	31	33	69
Other Improper Driving	4	26	35	65
Alcohol Involved	7	23	19	49
Speed Too Fast for Conditions	4	13	26	43
Drove Left Of Center	5	20	14	39
Avoid No Contact - Vehicle	1	17	16	34
Avoid No Contact - Other	1	4	20	25
Made Improper Turn	0	5	18	23
Improper Overtaking	0	7	13	20
Drug Involved	8	7	4	19
Improper Lane Change	0	4	12	16
Vehicle Skidded Before Brake	1	4	8	13
Improper Backing	0	3	9	12
Passed Stop Sign	0	2	10	12
Cell Phone	0	8	1	9
Disregarded Traffic Signal	0	3	4	7
Failed to Yield to Police Vehicle	0	1	3	4
High Speed Pursuit	0	0	4	4
Texting	0	4	0	4
Driverless Moving Vehicle	0	0	3	3
Failed to Yield to Emergency Vehicle	0	0	2	2
Pedestrian Error	2	0	0	2
Vehicle	1	6	13	20
Other Mechanical Defect	0	3	6	9
Defective Tires	1	1	2	4
Inadequate Brakes	0	1	3	4
Defective Steering	0	1	2	3
Environment	0	0	4	4
Road Defect	0	0	4	4
Low Visibility Due to Smoke	0	0	0	0
Traffic Control Not Functioning	0	0	0	0
Other	4	157	416	577
None	4	121	299	424
Other - No Driver Error	0	36	117	153

¹ Multiple contributing factors may be reported for any vehicle in a crash.

Table 16: People in Crashes by Crash Classification and Severity of Injuries in Rio Arriba County, 2018

Crash Classification	People in Crashes by Severity of Injuries					Total People
	Fatalities (Class K)	Suspected Serious Injuries (Class A)	Suspected Minor Injuries (Class B)	Possible Injuries (Class C)	No Apparent Injuries (Class O)	
Animal	0	3	5	11	222	241
Fixed Object	2	3	12	16	99	132
Other (Non-Collision)	0	1	3	1	18	23
Other (Object)	0	1	4	2	36	43
Other Vehicle	5	12	53	153	819	1,042
Overturn/Rollover	2	3	18	8	37	68
Parked Vehicle	0	0	0	0	30	30
Pedalcyclist	0	0	0	0	0	0
Pedestrian	2	1	2	0	4	9
Railroad Train	0	0	0	0	0	0
Rollover	3	1	4	4	9	21
Vehicle on Other Road	0	0	1	5	10	16
Missing Data	0	0	0	1	4	5
Total People	14	25	102	201	1,288	1,630

**Table 17: Killed or Injured Unbelted People in Crashes
by Sex and Age Group in Rio Arriba County, 2018**

Age Groups	Unbelted People Killed or Injured ^{1,2}				Total People
	Male	Percent of Male	Female	Percent of Female	
0-4	0	0%	1	9%	1
5-9	1	5%	0	0%	1
10-14	0	0%	0	0%	0
15-19	1	5%	2	18%	3
20-24	4	19%	2	18%	6
25-29	5	24%	2	18%	7
30-34	2	10%	0	0%	2
35-39	2	10%	0	0%	2
40-44	0	0%	3	27%	3
45-49	2	10%	0	0%	2
50-54	1	5%	0	0%	1
55-59	1	5%	0	0%	1
60-64	0	0%	0	0%	0
65-69	2	10%	0	0%	2
70 +	0	0%	0	0%	0
Missing Data	0	0%	1	9%	1
Total People	21	100%	11	100%	32

¹ People injured are in one of three categories: suspected serious injury, suspected minor injury, or possible injury.

² Excludes people in or on buses, heavy trucks, motorcycles, or ATVs.

Figure 8: Seatbelt Use by People in Crashes with Fatal or Suspected Serious Injuries in Rio Arriba County, 2014-2018

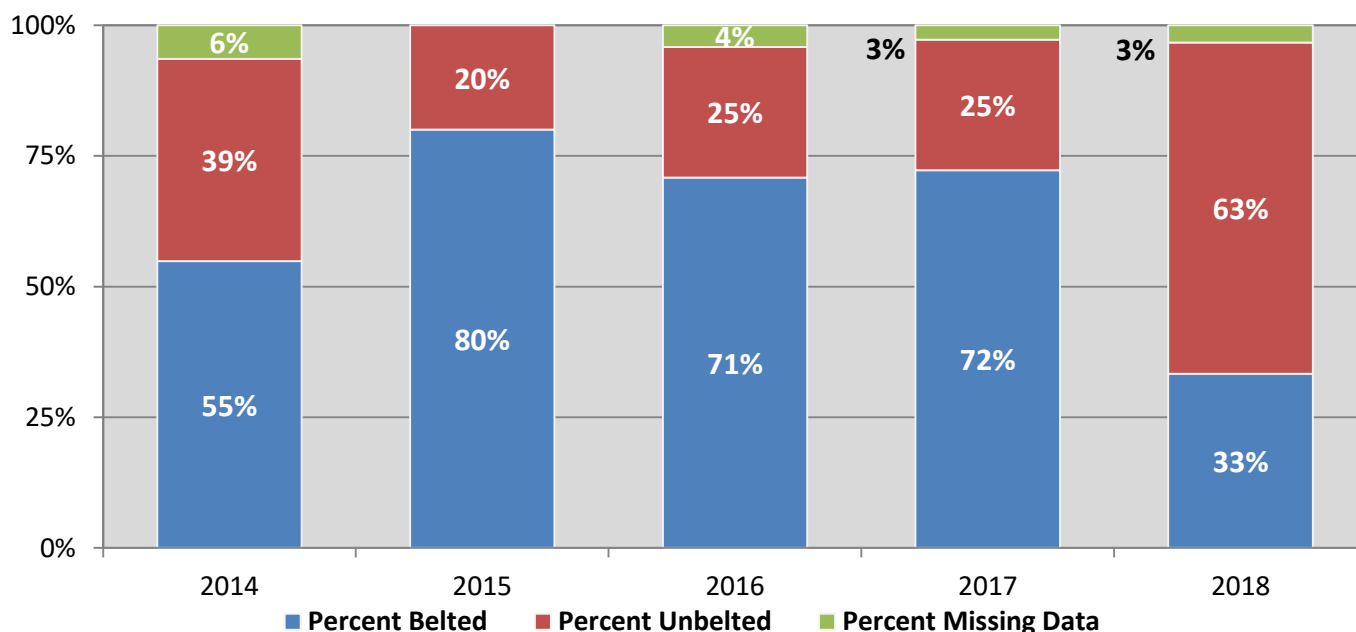
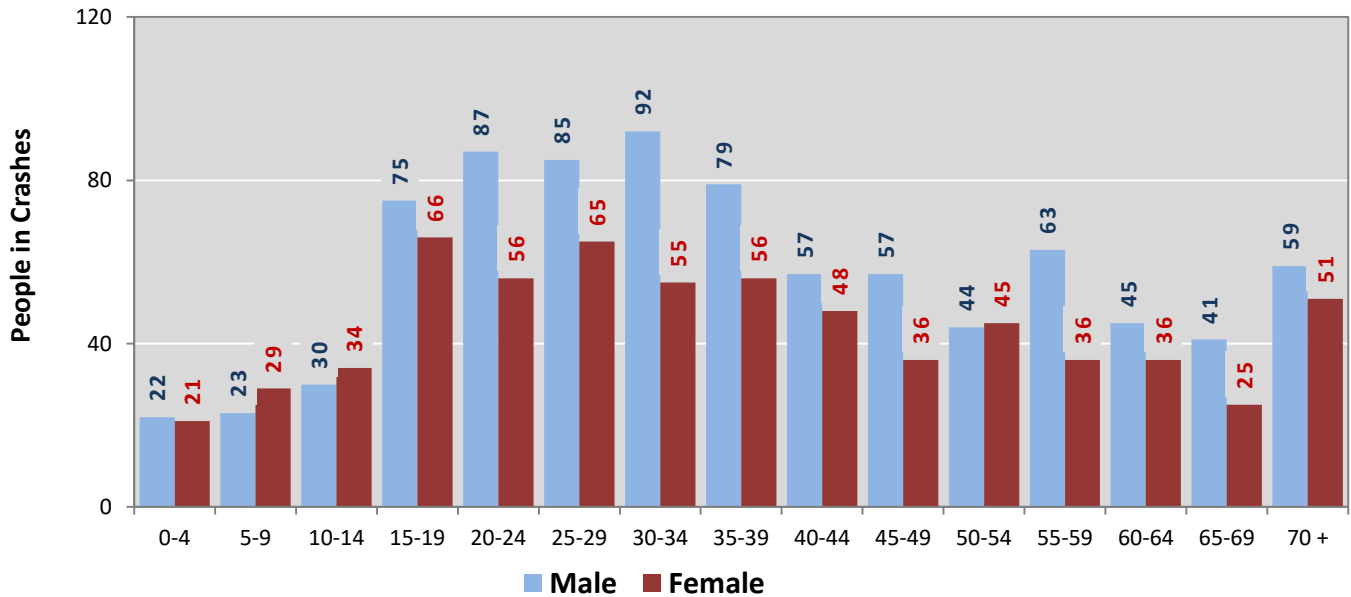
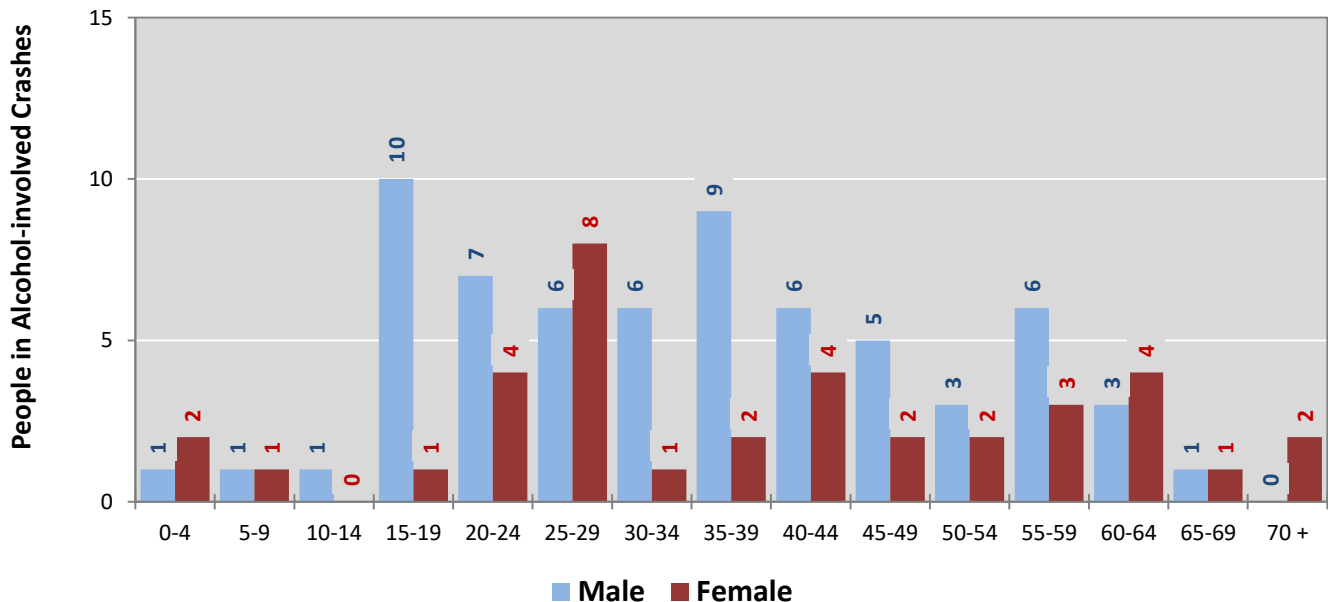


Figure 9: People in Crashes by Age Group and Sex in Rio Arriba County, 2018



* In 2018, Rio Arriba County had 112 people in crashes for which age or sex data were missing.

Figure 10: People in Alcohol-involved Crashes by Age Group and Sex in Rio Arriba County, 2018



* In 2018, Rio Arriba County had 3 people in alcohol-involved crashes for which age or sex data were missing.

Table 18: Pedestrians and Pedalcyclists in Crashes by Age Group in Rio Arriba County, 2014-2018

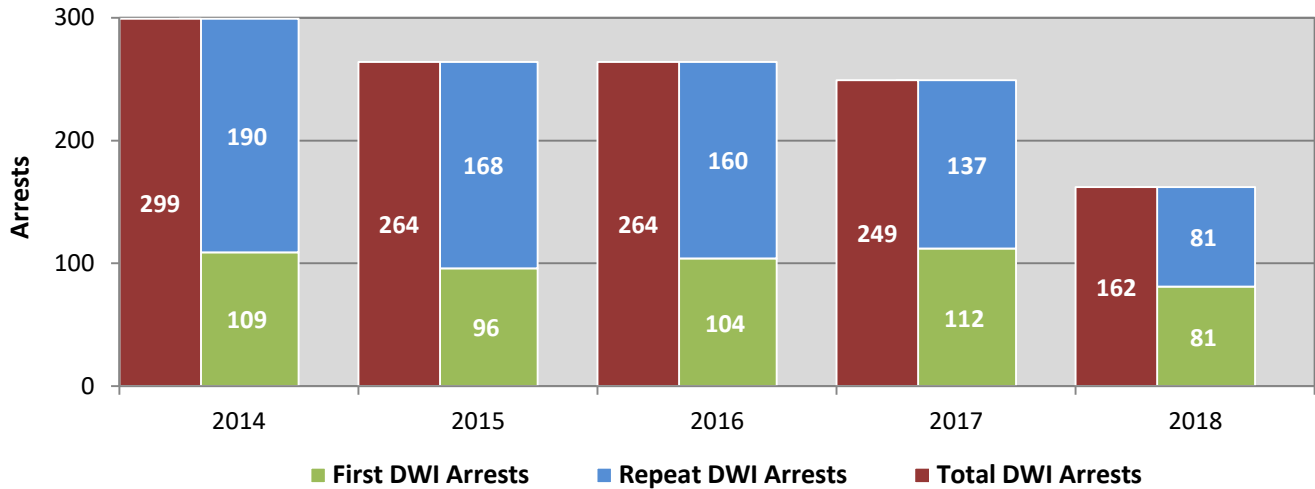
Age Groups	Pedestrians and Pedalcyclists ¹ in Crashes					5-Year Total People
	2014	2015	2016	2017	2018	
0-4	0	0	0	0	0	0
5-9	0	1	0	0	0	1
10-14	0	0	1	0	0	1
15-19	0	1	0	0	0	1
20-24	0	0	1	2	0	3
25-29	0	0	0	1	1	2
30-34	0	4	3	0	0	7
35-39	0	0	1	2	2	5
40-44	0	0	1	0	0	1
45-49	0	1	1	0	0	2
50-54	1	0	0	0	1	2
55-59	1	0	1	0	0	2
60-64	0	0	1	0	0	1
65-69	1	0	0	0	0	1
70 +	0	0	0	0	0	0
Missing Data	1	0	0	1	0	2
Total People	4	7	10	6	4	31

Table 19: Pedestrians and Pedalcyclists in Crashes by Alcohol Involvement and Severity of Injuries in Rio Arriba County, 2018

Alcohol Involvement	Pedestrians and Pedalcyclists ¹ in Crashes					Total People
	Fatalities (Class K)	Suspected Serious Injuries (Class A)	Suspected Minor Injuries (Class B)	Possible Injuries (Class C)	No Apparent Injury (Class O)	
Total Pedalcyclists	0	0	0	0	0	0
Involved	0	0	0	0	0	0
Not Involved	0	0	0	0	0	0
Total Pedestrians	2	1	1	0	0	4
Involved	2	1	0	0	0	3
Not Involved	0	0	1	0	0	1
Total People	2	1	1	0	0	4

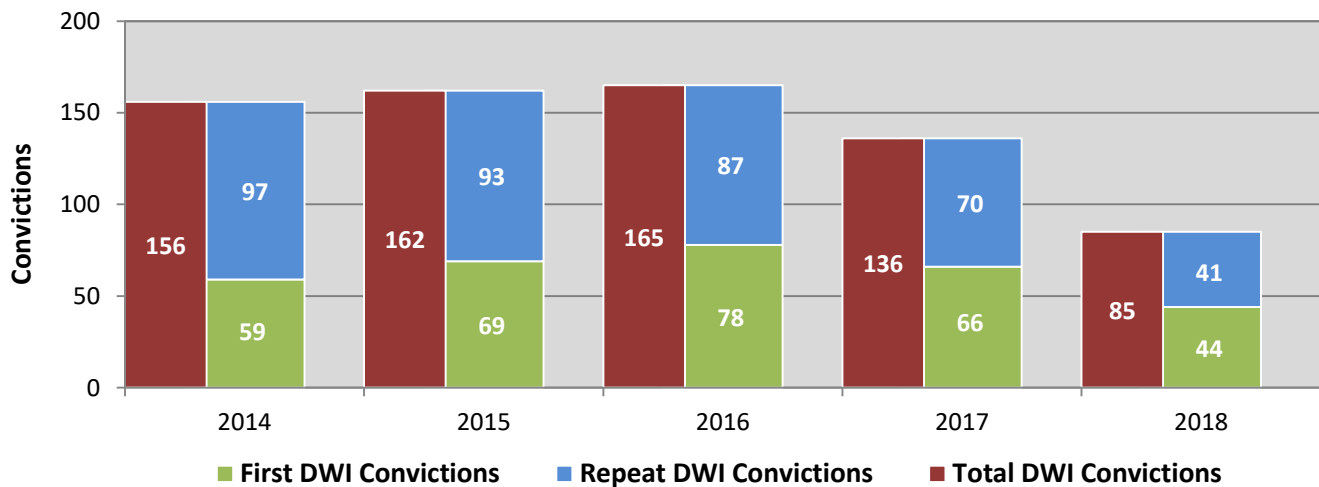
¹ Pedestrians and pedalcyclists are counted as non-motorized vehicles, when involved in a crash with a motor vehicle.

**Figure 11: DWI Arrests in Rio Arriba County,
Showing First and Repeat DWI Arrests, 2014-2018**



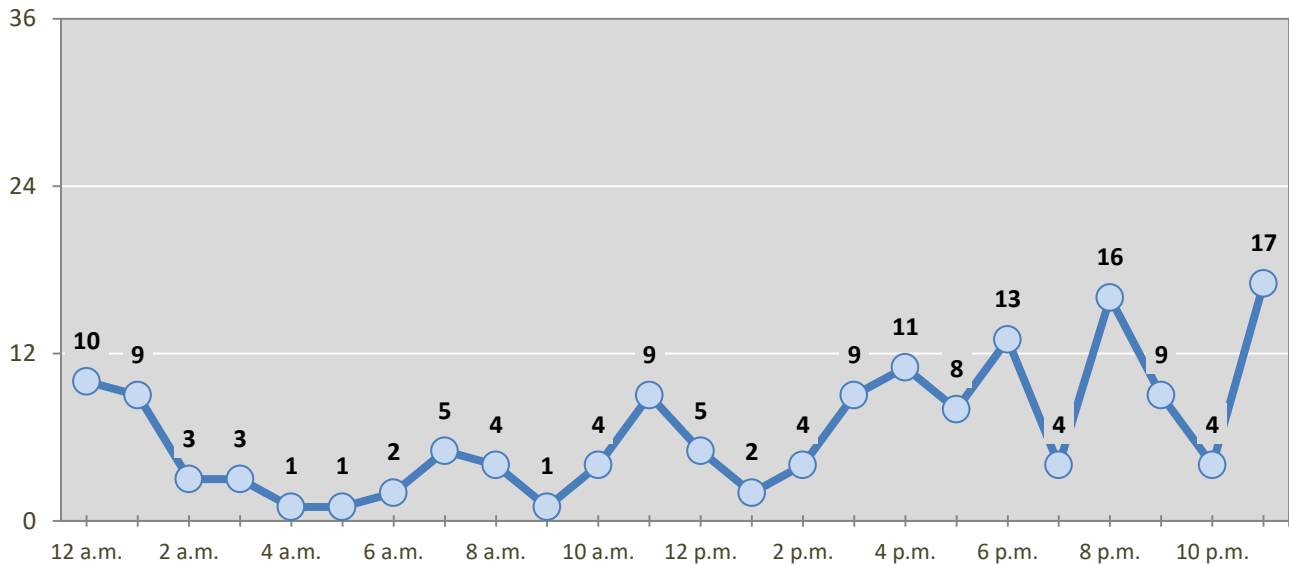
*Values are based upon the year of the arrest.

**Figure 12: DWI Convictions in Rio Arriba County,
Showing First and Repeat DWI Convictions, 2014-2018**



*Values are based upon the year of the conviction.

Figure 13: DWI Arrests by Hour in Rio Arriba County, 2018



* In 2018, Rio Arriba County had 8 arrests for which hour data were missing.

Table 20: DWI Arrests by Day of Week in Rio Arriba County, 2014-2018

Day of Week	Year					5-Year Average
	2014	2015	2016	2017	2018	
Sunday	60	46	44	41	36	45
Monday	39	25	25	28	16	27
Tuesday	27	29	33	24	14	25
Wednesday	27	24	28	32	18	26
Thursday	34	30	34	32	17	29
Friday	60	51	48	39	27	45
Saturday	52	59	52	53	34	50
Total Arrests	299	264	264	249	162	248

Table 21: Driver First DWI Arrests by Age Group in Rio Arriba County, 2014-2018

Age Groups	Driver First DWI Arrests ¹				
	2014	2015	2016	2017	2018
15-19	5	4	7	6	5
20-24	21	15	15	30	25
25-29	20	20	19	14	7
30-34	26	12	19	10	9
35-39	9	10	10	14	7
40-44	9	9	10	10	6
45-49	6	6	5	11	8
50-54	4	11	8	6	7
55-59	2	5	3	3	3
60-64	4	3	2	3	1
65-69	2	1	4	2	0
70 +	1	0	2	3	3
Missing Data	0	0	0	0	0
Total Drivers	109	96	104	112	81

¹ Values are based upon the year of the arrest.

Table 22: Driver Repeat DWI Arrests by Age Group in Rio Arriba County, 2014-2018

Age Groups	Driver Repeat DWI Arrests ¹				
	2014	2015	2016	2017	2018
15-19	2	0	1	0	1
20-24	8	7	7	5	4
25-29	24	24	16	14	10
30-34	28	25	31	20	13
35-39	15	25	20	21	10
40-44	31	26	23	12	11
45-49	24	20	21	26	10
50-54	32	19	20	11	6
55-59	12	13	14	13	11
60-64	9	7	7	9	3
65-69	4	1	0	2	2
70 +	1	1	0	4	0
Missing Data	0	0	0	0	0
Total Drivers	190	168	160	137	81

¹ Values are based upon the year of the arrest.

Table 23: Driver First DWI Convictions by Age Group in Rio Arriba County, 2014-2018

Age Groups	Driver First DWI Convictions ¹				
	2014	2015	2016	2017	2018
15-19	0	2	2	3	2
20-24	18	9	13	12	9
25-29	15	16	20	10	8
30-34	2	16	16	9	4
35-39	6	4	7	5	7
40-44	4	8	6	11	3
45-49	5	4	5	3	5
50-54	4	3	5	4	1
55-59	1	3	1	5	2
60-64	3	3	0	2	1
65-69	1	0	3	2	1
70 +	0	1	0	0	1
Missing Data	0	0	0	0	0
Total Drivers	59	69	78	66	44

¹ Values are based upon the year of the conviction.

Table 24: Driver Repeat DWI Convictions by Age Group in Rio Arriba County, 2014-2018

Age Groups	Driver Repeat DWI Convictions ¹				
	2014	2015	2016	2017	2018
15-19	0	1	0	0	0
20-24	1	2	2	2	2
25-29	12	16	8	4	5
30-34	17	14	20	11	6
35-39	9	10	15	11	4
40-44	13	12	13	10	3
45-49	13	13	13	9	11
50-54	14	16	11	9	2
55-59	9	8	4	8	4
60-64	7	1	1	5	2
65-69	2	0	0	0	0
70 +	0	0	0	1	2
Missing Data	0	0	0	0	0
Total Drivers	97	93	87	70	41

¹ Values are based upon the year of the conviction.

Table 25: Court Disposition of DWI Arrests for Rio Arriba County and the State, 2018

Court Disposition of DWI Arrest¹	Rio Arriba County	Statewide	Percent of Statewide
Total DWI Arrests	162	10,205	1.6%
DWI Arrests Resulting in Convictions	42	4,641	0.9%
DWI Arrests Resulting in Dismissals ²	13	880	1.5%
DWI Arrests Awaiting Disposition	107	4,684	2.3%

¹ These are the number of DWI arrests in 2018 and whether the case resulted in a conviction or dismissal, or is still awaiting court disposition, as reported in the NM MVD Citation Tracking System (CTS) as of February 2019.

² For this table, a very small number of "not guilty" rulings may be included in the category Dismissals.

Table 26: Average Number of Days from Date of DWI Arrest to Date of Court Disposition in Rio Arriba County and the State, 2018

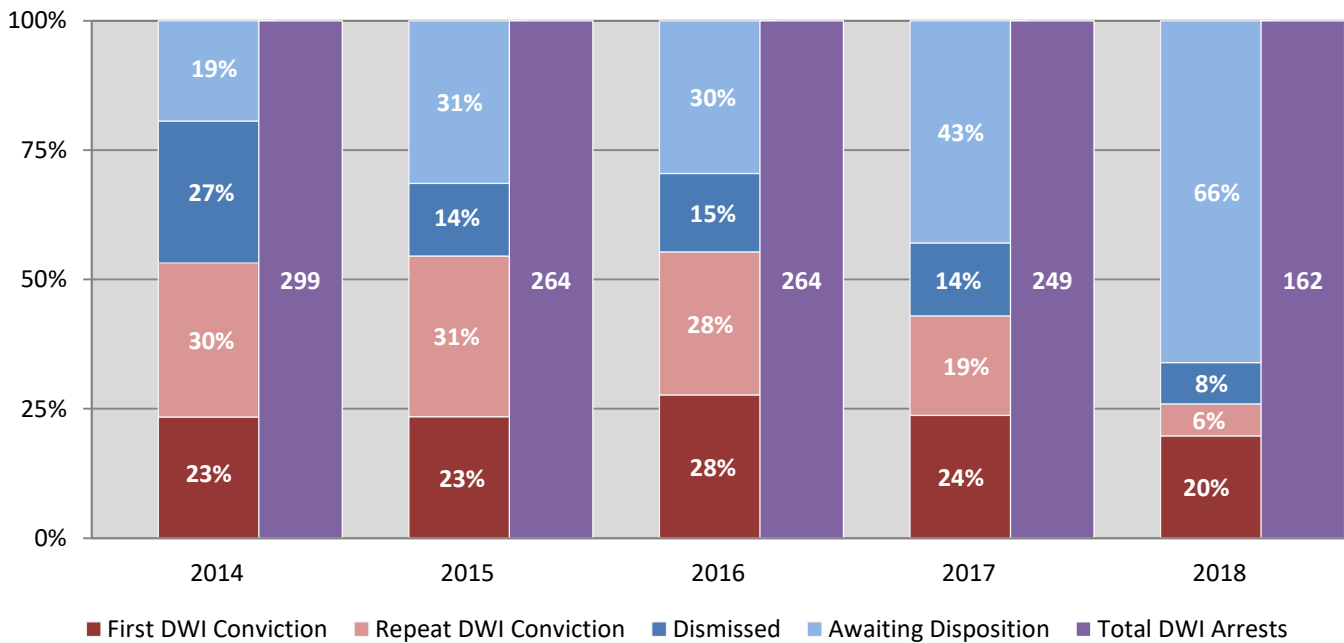
Court Disposition	Average Number of Days		Deviation from Statewide Average
	Rio Arriba County	Statewide	
DWI Conviction	154	145	8
DWI Dismissal	150	153	-3

Table 27: Court Disposition of DWI Arrests in Rio Arriba County, 2014-2018

Year of DWI Arrest ¹	Court Disposition				Total DWI Arrests
	First DWI Conviction	Repeat DWI Conviction	Dismissed	Awaiting Disposition	
2014	70	89	82	58	299
2015	62	82	37	83	264
2016	73	73	40	78	264
2017	59	48	35	107	249
2018	32	10	13	107	162

¹ Values are based upon the year of the arrest.

Figure 14: Court Dispositions by Percentage of DWI Arrests in Rio Arriba County, 2014-2018



*Table 27 contains the values used to calculate percentages shown in Figure 14.