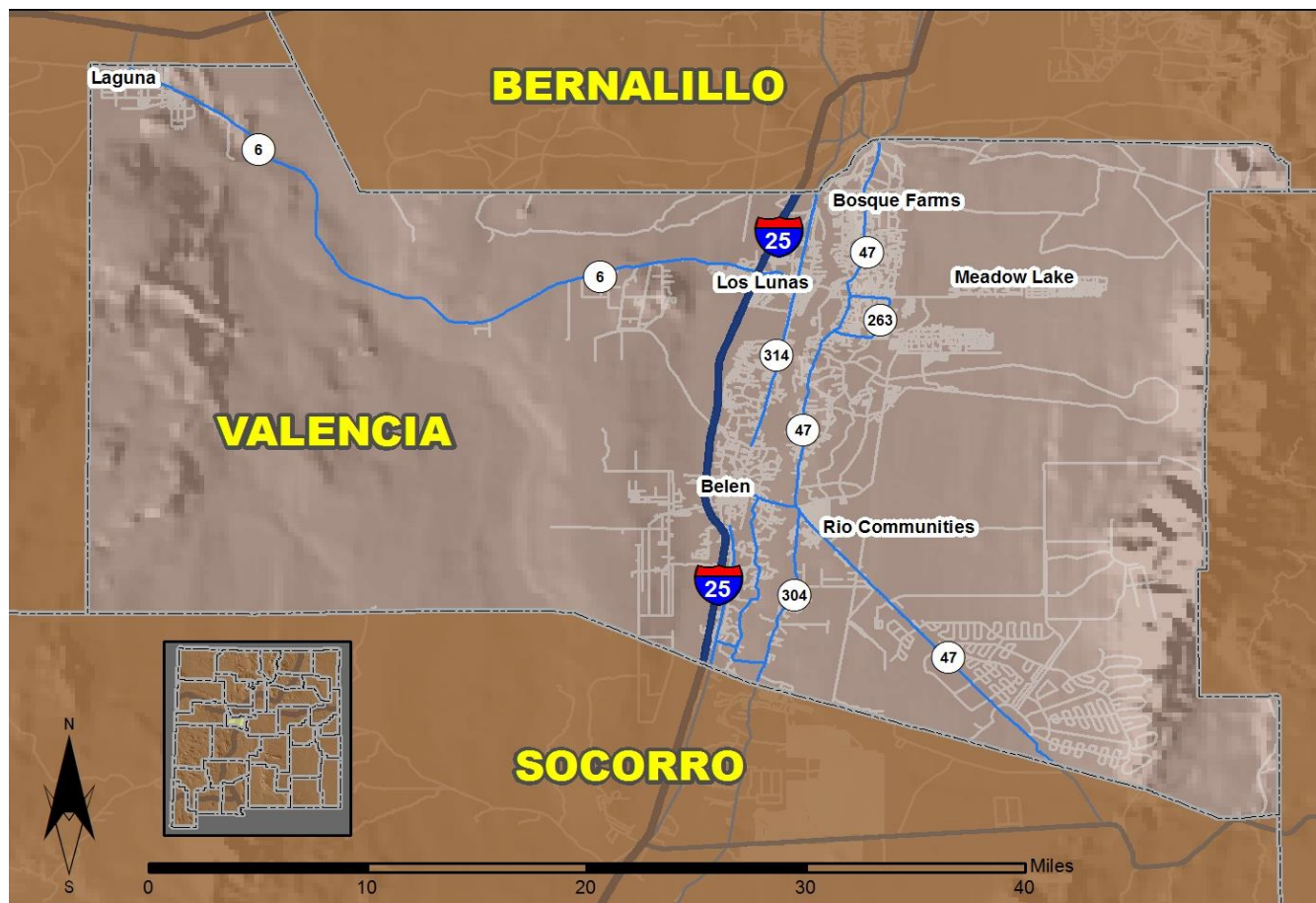


2018 Community Report

Valencia County



Produced for the New Mexico Department of Transportation,
Traffic Safety Division, Traffic Records Bureau,
Under Contract 6093 by the University of New Mexico,
Geospatial and Population Studies, Traffic Research Unit

Distributed in compliance with New Mexico Statute 66-7-214
as a reference source regarding New Mexico traffic crashes

For the purposes of this report, data are compiled by the University of New Mexico, Geospatial and Population Studies, Traffic Research Unit (TRU), on behalf of the New Mexico Department of Transportation (NMDOT). Data in this report may differ from that in other data sources, such as the Federal Fatality Analysis Reporting System (FARS), due to the timing of publications and rules for how data are compiled and maintained in Federal vs. State databases. If you have questions regarding this report, please contact the Traffic Safety Division at 505-827-0427.

<https://gps.unm.edu/tru/crash-reports/community-reports>

Definitions

Aggravated DWI – A driver arrested for 1) driving with a BAC of 0.16 or higher, 2) driving under the influence of alcohol or drugs and causing bodily injury to a human being as a result, or 3) driving under the influence of alcohol or drugs and refusing to submit to a BAC test at the time of arrest for DWI.

Alcohol-involved Crash – A crash for which the Uniform Crash Report indicated that 1) a DWI citation was issued, 2) alcohol was a contributing factor, or 3) a person in control of a vehicle (including a pedestrian or pedalcyclist) was suspected of being under the influence of alcohol.

Alcohol-involved Driver – A person in control of a vehicle who was cited for DWI or indicated on the Uniform Crash Report as being either suspected or determined by testing to be under the influence of alcohol. There can be multiple alcohol-involved drivers in a single alcohol-involved crash.

Crash – A reported incident on a public roadway involving one or more motor vehicles that resulted in death, personal injury, or at least \$500 in property damage. Crashes on private property (such as a parking lot) are not included.

DWI Arrest (Citation) – In this report, a DWI arrest (a.k.a. a DWI citation) is a driver arrested for either DWI or aggravated DWI. New Mexico’s legal limit for presumption of driving while intoxicated (DWI) is 0.08 for non-commercial drivers older than 21 years of age, 0.04 for commercial vehicle drivers, and 0.02 for drivers younger than 21 years of age.

DWI Conviction – A driver convicted of driving under the intoxicating influence of alcohol, narcotics, or pathogenic drugs, including aggravated DWI.

Fatal Crash – A crash in which at least one person was killed. More than one person can be killed in a single fatal crash.

Fatalities – The number of people killed in a crash. The terms “killed” and “deaths” are synonymous with “fatalities.” A fatality is crash-related if it occurs at the time of the crash or if the person(s) involved in the crash dies within 30 days.

Injury Crash – A reported crash in which at least one person was injured. Injury crashes involve at least one suspected serious injury (Class A), suspected minor injury (Class B), or possible injury (Class C). Fatal crashes are not included.

Missing Data – An indication that the applicable field on the UCR form was left blank or contained an invalid code. Starting with crashes that occurred in 2012, improvements in the identification of missing data in the NMDOT crash database led to an increase in the reported amount of missing data.

Pedalcyclist – A person riding a mechanism of transport that is powered solely by pedals (a.k.a. bicyclist).

Pedestrian – A person on foot, walking, running, jogging, hiking, sitting or lying down who is involved in a motor vehicle traffic crash.

Sources

Crash Data – New Mexico Department of Transportation, Traffic Safety Division, Traffic Records Bureau, Traffic Crash Database, as of the report date below. Crash data are compiled using NMDOT Uniform Crash Reports (UCR), submitted by law enforcement agencies in the state, for any incident on a public roadway involving one or more motor vehicles that resulted in death, injury, or at least \$500 in property damage. These reports are processed by the NMDOT Traffic Records Bureau and analyzed by the University of New Mexico, Geospatial and Population Studies, Traffic Research Unit (TRU).

DWI Citation Tracking System (CTS) – New Mexico Taxation and Revenue Department (NM TRD), Motor Vehicle Division (MVD), DWI Citation Tracking System (CTS), as of July 2019. Repeat offenders are identified by the combination of account key, arrest date, and citation number. County data are based upon the county where the arrest took place. City data are based upon the city where the offender resides.

Urban Areas – Areas defined by the New Mexico Department of Transportation, Asset Management and Planning, 2010 U.S. Census Urbanized Area Boundaries, NMDOT-Adjusted, and U.S. Census Urban Clusters, August 21, 2013. Urban areas for crash years 2013-2017 include a 1/2 mile buffer extending out from those urban boundaries. In crashes before 2013, “urban” was defined as a town or city with a population of at least 2,500 people.

**Table 1: Total Crashes and Alcohol-involved Crashes by
Crash Severity in Valencia County, 2009-2018**

Year	Total Crashes				Alcohol-involved Crashes			
	Fatal	Injury	Property Damage Only	Total	Fatal	Injury	Property Damage Only	Total
2009	5	324	786	1,115	3	24	41	68
2010	11	285	623	919	4	19	17	40
2011	10	251	603	864	2	17	29	48
2012	10	125	225	360	4	11	8	23
2013	2	211	435	648	1	14	8	23
2014	10	206	448	664	7	17	10	34
2015	5	375	742	1,122	3	26	29	58
2016	7	428	736	1,171	0	25	31	56
2017	12	421	697	1,130	3	29	21	53
2018	7	357	660	1,024	2	14	25	41

**Figure 1: Alcohol-involved Fatal and Injury Crashes Compared with
Non-alcohol-involved Fatal and Injury Crashes in Valencia County, 2009-2018**

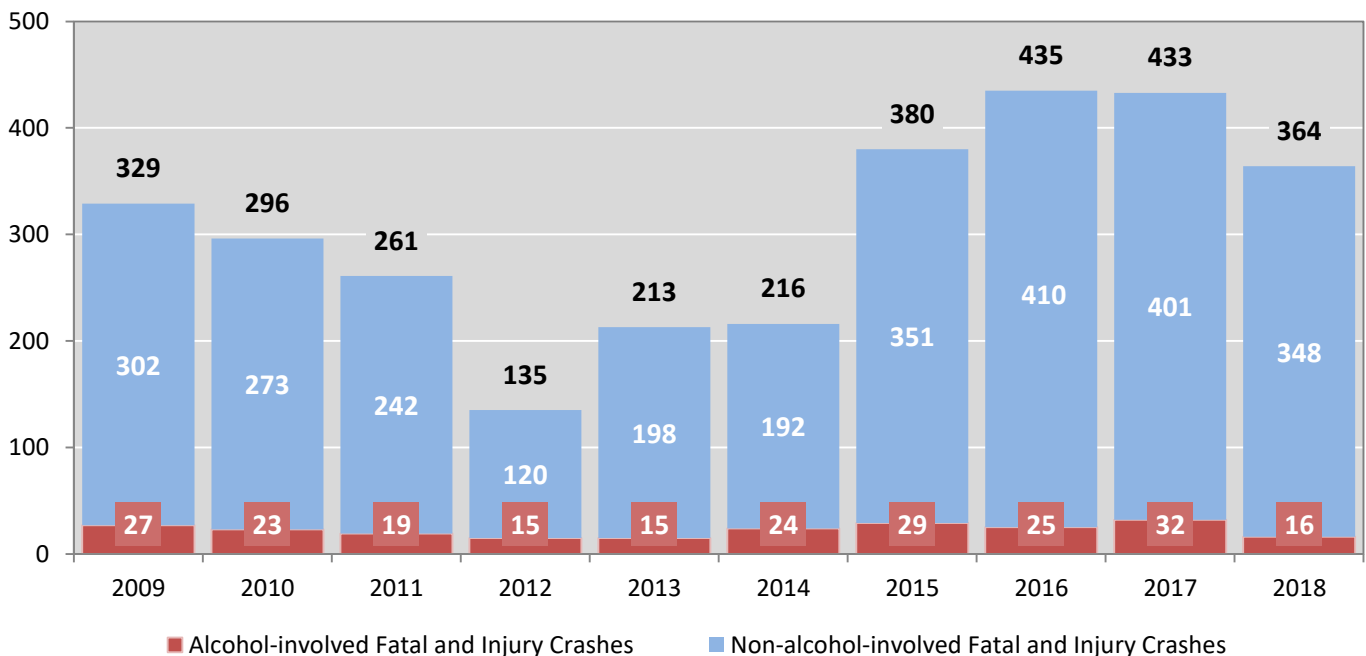


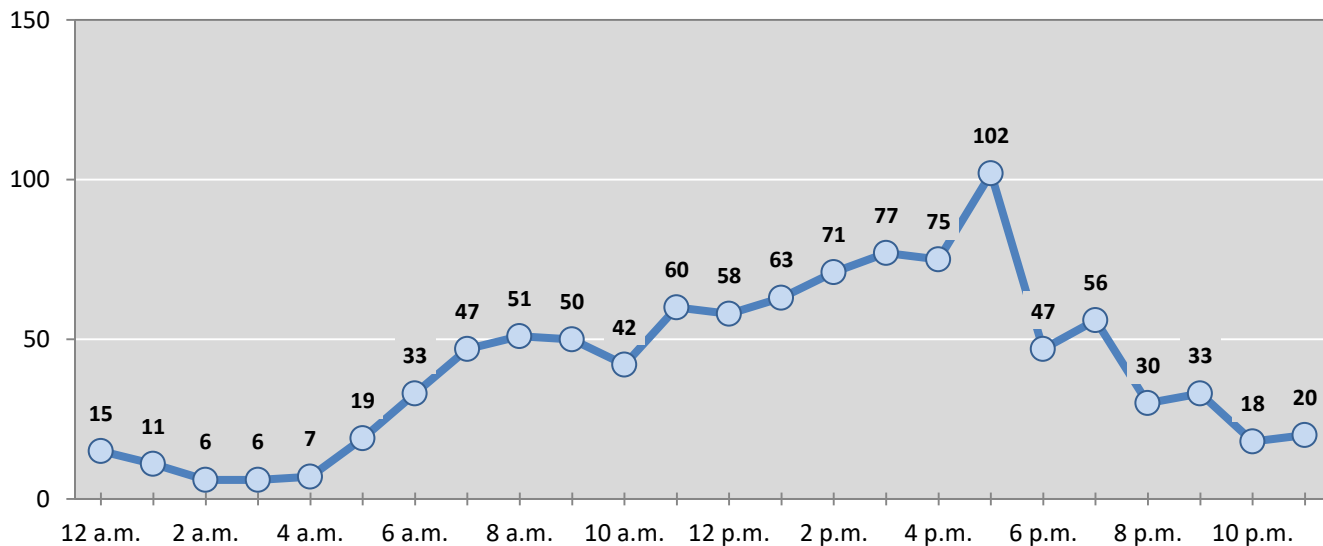
Table 2: Crashes by Month in Valencia County, 2014-2018

Month	Crashes					5-Year Average
	2014	2015	2016	2017	2018	
January	50	97	78	103	87	83
February	40	102	81	63	40	65
March	35	80	105	97	72	78
April	56	92	101	89	92	86
May	60	75	90	95	103	85
June	44	80	89	76	97	77
July	59	99	102	92	87	88
August	54	100	112	110	109	97
September	48	85	106	81	78	80
October	65	88	103	104	108	94
November	54	121	115	105	36	86
December	99	103	89	115	115	104
Total Crashes	664	1,122	1,171	1,130	1,024	1,022

Table 3: Alcohol-involved Crashes by Month in Valencia County, 2014-2018

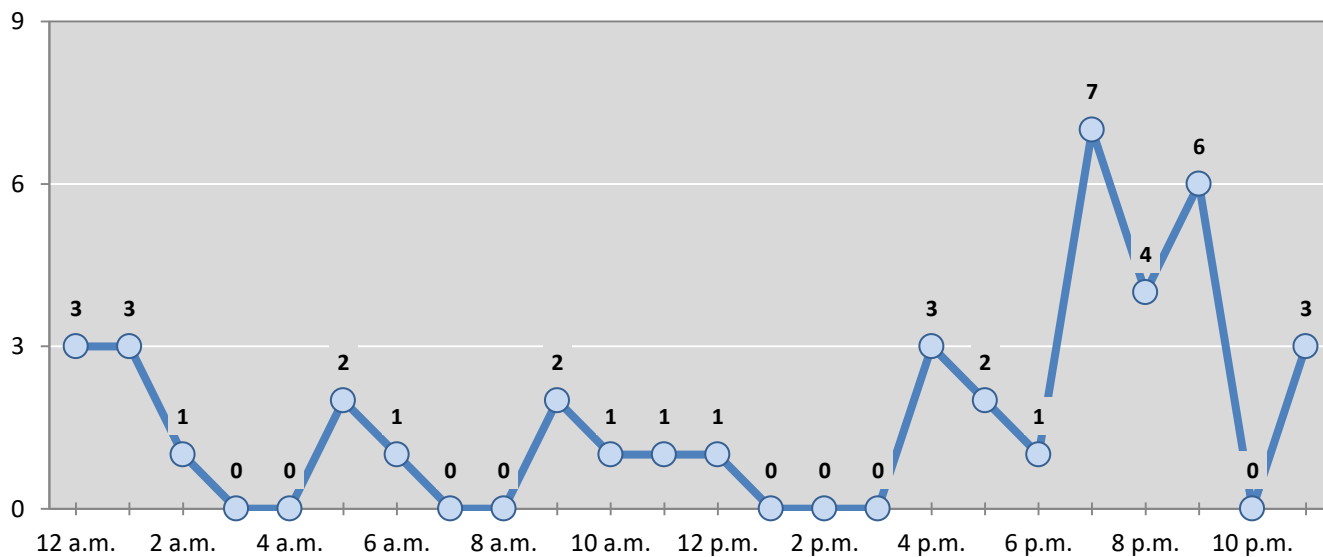
Month	Alcohol-involved Crashes					5-Year Average
	2014	2015	2016	2017	2018	
January	2	9	2	5	1	4
February	1	6	2	5	3	3
March	2	4	5	7	7	5
April	2	3	4	3	6	4
May	3	1	1	3	2	2
June	0	6	6	6	6	5
July	0	6	6	1	4	3
August	7	4	7	4	4	5
September	2	2	8	3	1	3
October	6	5	9	3	1	5
November	5	7	1	9	3	5
December	4	5	5	4	3	4
Total Crashes	34	58	56	53	41	48

Figure 2: Crashes by Hour in Valencia County, 2018



* In 2018, Valencia County had 7 crashes for which hour data were missing.

Figure 3: Alcohol-involved Crashes by Hour in Valencia County, 2018



* In 2018, Valencia County had 0 alcohol-involved crashes for which hour data were missing.

Table 4: Alcohol-involved Crashes by Day of Week in Valencia County, 2014-2018

Day of Week	Alcohol-involved Crashes					5-Year Average
	2014	2015	2016	2017	2018	
Sunday	2	12	14	7	7	8
Monday	3	4	8	5	6	5
Tuesday	8	5	5	8	1	5
Wednesday	3	7	4	3	4	4
Thursday	2	7	7	7	4	5
Friday	10	11	7	9	5	8
Saturday	6	12	11	14	14	11
Total Crashes	34	58	56	53	41	48

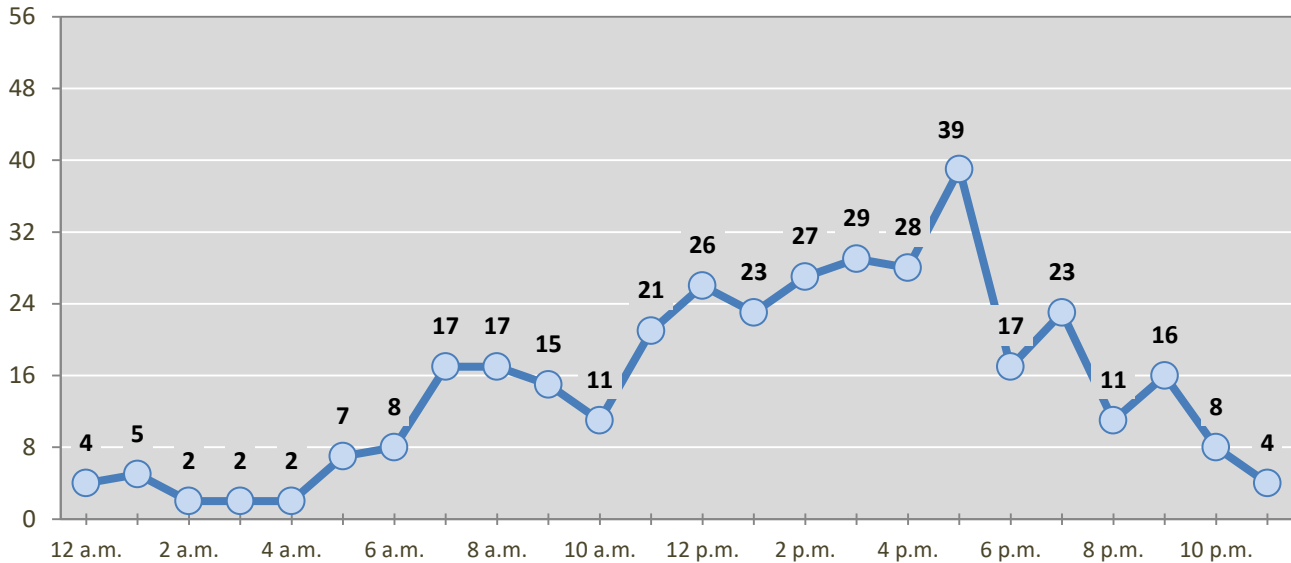
Table 5: Fatal and Injury Crashes by Day of Week in Valencia County, 2014-2018

Day of Week	Fatal and Injury Crashes					5-Year Average
	2014	2015	2016	2017	2018	
Sunday	26	37	48	41	39	38
Monday	24	68	72	73	45	56
Tuesday	29	56	59	56	61	52
Wednesday	34	56	61	63	50	53
Thursday	30	61	75	56	51	55
Friday	39	51	72	76	56	59
Saturday	34	51	48	68	62	53
Total Crashes	216	380	435	433	364	366

Table 6: Pedestrian and Pedalcyclist Crashes by Day of Week in Valencia County, 2014-2018

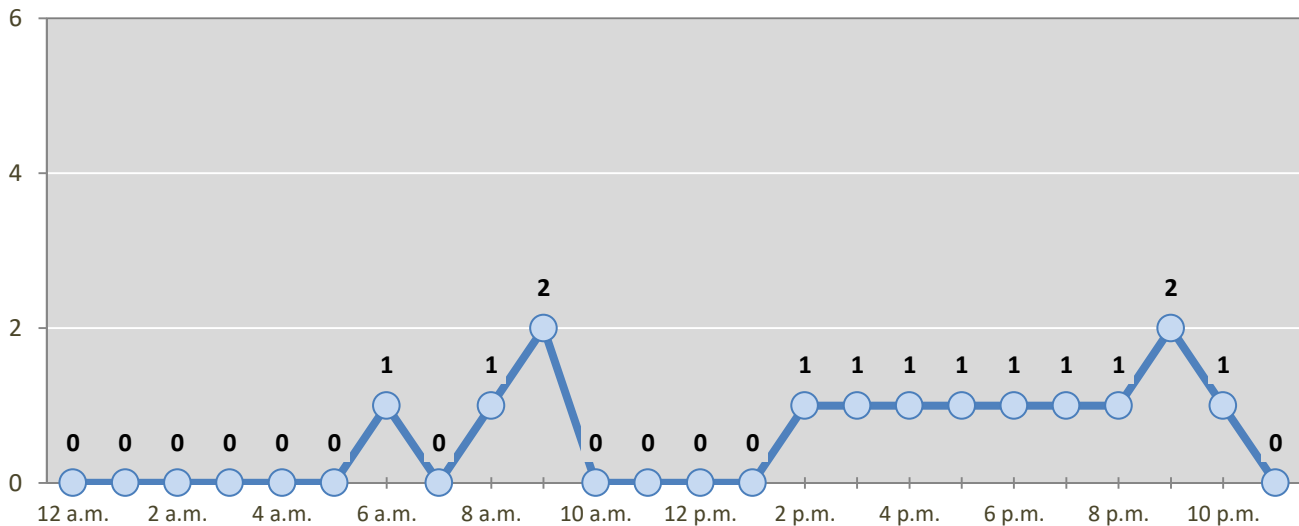
Day of Week	Pedestrian and Pedalcyclist Crashes					5-Year Average
	2014	2015	2016	2017	2018	
Sunday	0	4	1	1	2	2
Monday	3	2	1	1	4	2
Tuesday	2	1	3	4	2	2
Wednesday	3	1	2	6	3	3
Thursday	2	3	2	4	1	2
Friday	2	0	5	3	1	2
Saturday	2	3	2	2	1	2
Total Crashes	14	14	16	21	14	16

Figure 4: Fatal and Injury Crashes by Hour in Valencia County, 2018



* In 2018, Valencia County had 2 crashes for which hour data were missing.

Figure 5: Pedestrian and Pedalcyclist Crashes by Hour in Valencia County, 2018



* In 2018, Valencia County had 0 crashes for which hour data were missing.

Table 7: Severity of Injuries to People in Crashes by Rural and Urban Location in Valencia County, 2018

Urban and Rural Locations by Alcohol-involvement	People in Crashes by Severity of Injuries					Total People
	Fatalities (Class K)	Suspected Serious Injuries (Class A)	Suspected Minor Injuries (Class B)	Possible Injuries (Class C)	No Apparent Injuries (Class O)	
People in Alcohol-involved Crashes	2	6	13	7	41	69
Urban	2	6	10	4	36	58
Rural Non-Interstate	0	0	3	3	5	11
Rural Interstate	0	0	0	0	0	0
People in Crashes	7	35	144	330	2,087	2,603
Urban	5	22	109	274	1,800	2,210
Rural Non-Interstate	2	8	28	45	241	324
Rural Interstate	0	5	7	11	46	69
Percent in Alcohol-involved Crashes	29%	17%	9%	2%	2%	3%

Table 8: Total Crashes by Roadway System and Crash Severity in Valencia County, 2014-2018

Crash Severity by System	Crashes by Year					5-Year Average
	2014	2015	2016	2017	2018	
Total Rural Interstate	1	7	6	10	30	11
Fatal Crash	0	0	0	0	0	0
Injury Crash	0	2	5	4	12	5
Property Damage Only Crash	1	5	1	6	18	6
Total Rural Non-Interstate	14	67	53	76	159	74
Fatal Crash	2	1	0	4	2	2
Injury Crash	4	23	22	25	59	27
Property Damage Only Crash	8	43	31	47	98	45
Total Urban	649	1,048	1,112	1,044	835	937
Fatal Crash	8	4	7	8	5	6
Injury Crash	202	350	401	392	286	326
Property Damage Only Crash	439	694	704	644	544	605

Table 9: Total Crashes by Crash Classification in Valencia County, 2014-2018

Crash Classification	Total Crashes by Year					5-Year Average
	2014	2015	2016	2017	2018	
Animal	19	24	19	76	74	42
Fixed Object	40	36	37	77	91	56
Other (Non-Collision)	6	2	3	8	19	8
Other (Object)	4	12	4	11	16	9
Other Vehicle	217	240	287	371	356	294
Overturn/Rollover	18	2	12	63	52	29
Parked Vehicle	13	13	6	15	12	12
Pedalcyclist	4	8	4	4	7	5
Pedestrian	4	4	6	5	7	5
Railroad Train	0	0	0	0	1	0
Rollover	0	11	5	5	6	5
Vehicle on Other Road	0	5	1	0	4	2
Missing Data	2	0	1	0	2	1
Total Crashes	327	357	385	635	647	470

Table 10: Vehicles in Crashes by Vehicle Type in Valencia County, 2014-2018

Vehicle Type ¹	Vehicles in Crashes by Vehicle Type					5-Year Average
	2014	2015	2016	2017	2018	
Bus	3	6	10	10	8	7
Motorcycle	32	23	28	46	45	35
Passenger	602	995	1,010	954	846	881
Pedalcyclist	7	5	6	3	4	5
Pedestrian	8	9	12	19	10	12
Pickup	292	482	554	505	438	454
Semi	23	40	43	48	48	40
Van/SUV/4WD	220	343	415	421	359	352
Other Vehicle	12	66	32	4	26	28
Missing Data	44	74	65	45	52	56
Total Vehicles	1,243	2,043	2,175	2,055	1,836	1,870

¹ Pedestrians and pedalcyclists are counted as non-motorized vehicles, when involved in a crash with a motor vehicle. See Page 17 for data on drivers of non-motorized vehicles in crashes (i.e. pedestrians and pedalcyclists).

Table 11: Motor Vehicle Drivers in Crashes by Vehicle Type and Age Group in Valencia County, 2018

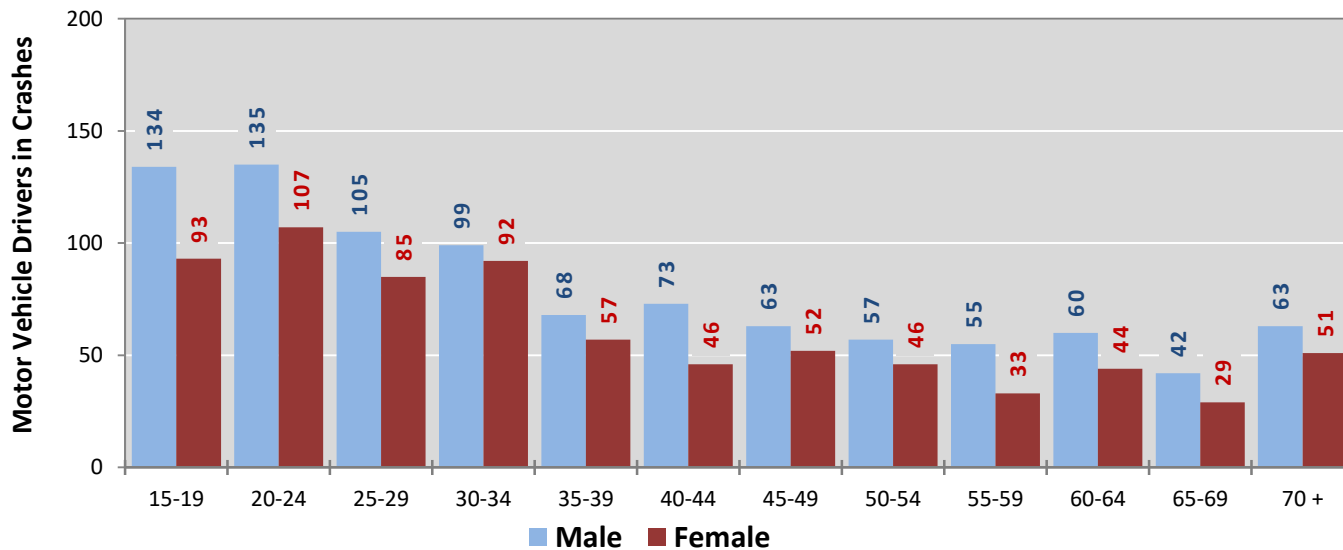
Age Groups	Motor Vehicle ¹ Drivers by Vehicle Type and Age Group								Total Drivers
	Bus	Motor-cycle	Passenger	Pickup	Semi	Van 4WD SUV	Other Vehicle	Missing Data	
15-19	0	2	128	58	1	35	3	0	227
20-24	0	9	149	42	2	33	1	7	243
25-29	0	5	102	32	5	40	5	2	191
30-34	0	6	88	48	6	43	2	0	193
35-39	0	1	57	37	3	24	2	1	125
40-44	0	3	50	28	3	32	2	1	119
45-49	2	1	46	28	7	29	1	1	115
50-54	3	4	37	32	3	21	1	2	103
55-59	0	3	31	29	2	19	2	2	88
60-64	1	3	32	31	7	27	0	3	104
65-69	1	0	35	20	1	14	0	0	71
70 +	1	0	49	27	1	29	5	2	114
Missing Data	0	8	42	26	7	13	2	31	129
Total Drivers	8	45	846	438	48	359	26	52	1,822

Table 12: Alcohol-involved Motor Vehicle Drivers in Crashes by Vehicle Type and Age Group in Valencia County, 2018

Age Groups	Alcohol-involved Motor Vehicle ¹ Drivers by Vehicle Type and Age Group								Total Drivers
	Bus	Motor-cycle	Passenger	Pickup	Semi	Van 4WD SUV	Other Vehicle	Missing Data	
15-19	0	0	2	0	0	1	0	0	3
20-24	0	1	3	2	0	1	0	1	8
25-29	0	0	4	0	0	1	0	1	6
30-34	0	2	2	1	0	0	0	0	5
35-39	0	0	0	2	0	1	0	0	3
40-44	0	0	2	0	0	2	0	0	4
45-49	0	0	0	0	0	0	0	0	0
50-54	0	0	0	2	0	1	0	0	3
55-59	0	0	1	0	0	2	0	0	3
60-64	0	0	1	1	0	0	0	0	2
65-69	0	0	0	1	0	0	0	0	1
70 +	0	0	1	1	0	0	0	0	2
Missing Data	0	0	0	0	0	0	0	0	0
Total Drivers	0	3	16	10	0	9	0	2	40

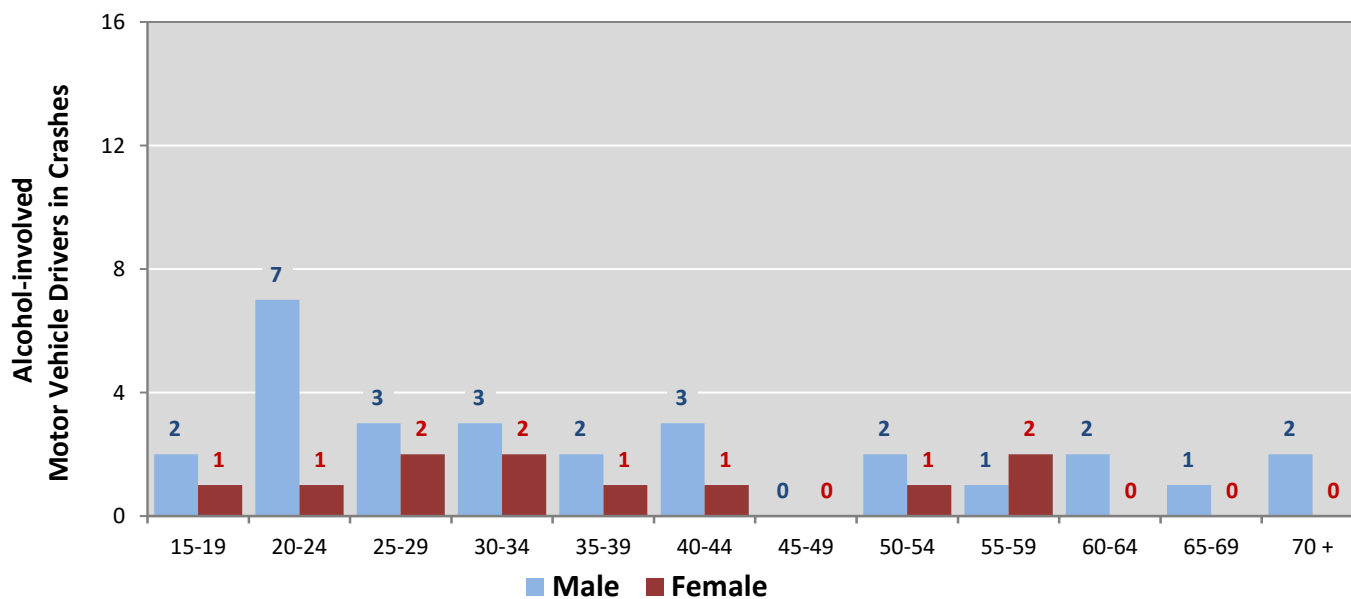
¹ See Page 17 for data on drivers of non-motorized vehicles in crashes (i.e. pedestrians and pedalcyclists).

Figure 6: Motor Vehicle Drivers in Crashes by Age Group and Sex in Valencia County, 2018



* In 2018, Valencia County had 133 drivers in crashes for which age or sex data were missing.

Figure 7: Alcohol-involved Motor Vehicle Drivers in Crashes by Age Group and Sex in Valencia County, 2018



* In 2018, Valencia County had 1 drivers in crashes for which age or sex data were missing.

Table 13: Alcohol-involved Motor Vehicle Drivers Under 21 (Ages 15-20) in Crashes in Valencia County, 2014-2018

Age ¹	Year					5-Year Total
	2014	2015	2016	2017	2018	
15	0	0	0	0	0	0
16	0	1	0	0	0	1
17	1	0	0	1	1	3
18	0	1	0	0	2	3
19	0	0	0	0	0	0
20	0	0	0	1	1	2
Total Drivers	1	2	0	2	4	9

Table 14: Motor Vehicle Drivers Under 21 (Ages 15-20) in Crashes by Age, Sex and Alcohol-involvement in Valencia County, 2018

Age ¹	Total Drivers				Alcohol-involved Drivers			
	Sex		Total Drivers	Percent of Total	Sex		Total Drivers	Percent of Total
	Male	Female			Male	Female		
15	3	4	7	6%	0	0	0	0%
16	18	4	22	18%	0	0	0	0%
17	15	9	24	20%	0	1	1	25%
18	24	8	32	26%	0	2	2	50%
19	15	9	24	20%	0	0	0	0%
20	5	8	13	11%	1	0	1	25%
Total Drivers	80	42	122	100%	1	3	4	100%

¹ For analysis of drivers under age 21, when the driver age or sex are not identified on the crash report (typically hit-and-run drivers), the driver data are considered unreliable and are excluded from the analysis.

**Table 15: Frequency of Contributing Factors in Crashes
by Crash Severity in Valencia County, 2018**

Contributing Factors	Frequency of Contributing Factor ¹ by Crash Severity			
	Frequency in Fatal Crashes	Frequency in Injury Crashes	Frequency in Property Damage Only Crashes	Frequency in All Crashes
Human	17	518	837	1,372
Driver Inattention	3	169	268	440
Failed to Yield Right of Way	0	63	108	171
Excessive Speed	3	55	66	124
Following Too Closely	0	54	65	119
Other Improper Driving	1	28	61	90
Avoid No Contact - Vehicle	0	26	33	59
Speed Too Fast for Conditions	0	15	42	57
Drove Left Of Center	1	24	20	45
Made Improper Turn	0	9	32	41
Alcohol Involved	2	14	25	41
Improper Overtaking	1	9	18	28
Improper Lane Change	0	8	16	24
Disregarded Traffic Signal	0	8	14	22
Avoid No Contact - Other	1	7	13	21
Improper Backing	0	1	19	20
Drug Involved	4	6	8	18
Cell Phone	0	2	11	13
Passed Stop Sign	0	6	7	13
Vehicle Skidded Before Brake	0	3	4	7
Failed to Yield to Police Vehicle	0	4	2	6
Pedestrian Error	1	4	1	6
High Speed Pursuit	0	2	1	3
Failed to Yield to Emergency Vehicle	0	1	1	2
Driverless Moving Vehicle	0	0	1	1
Texting	0	0	1	1
Vehicle	0	14	23	37
Other Mechanical Defect	0	5	15	20
Inadequate Brakes	0	3	4	7
Defective Tires	0	3	3	6
Defective Steering	0	3	1	4
Environment	0	0	0	0
Low Visibility Due to Smoke	0	0	0	0
Road Defect	0	0	0	0
Traffic Control Not Functioning	0	0	0	0
Other	4	283	474	761
None	3	234	381	618
Other - No Driver Error	1	49	93	143

¹ Multiple contributing factors may be reported for any vehicle in a crash.

Table 16: People in Crashes by Crash Classification and Severity of Injuries in Valencia County, 2018

Crash Classification	People in Crashes by Severity of Injuries					Total People
	Fatalities (Class K)	Suspected Serious Injuries (Class A)	Suspected Minor Injuries (Class B)	Possible Injuries (Class C)	No Apparent Injuries (Class O)	
Animal	0	0	2	1	25	28
Fixed Object	2	1	17	13	123	156
Other (Non-Collision)	0	0	5	1	18	24
Other (Object)	0	2	7	2	45	56
Other Vehicle	2	19	76	281	1,729	2,107
Overturn/Rollover	1	10	28	18	43	100
Parked Vehicle	0	0	0	2	48	50
Pedalcyclist	0	0	2	2	5	9
Pedestrian	1	3	3	6	16	29
Railroad Train	0	0	0	0	0	0
Rollover	1	0	0	0	0	1
Vehicle on Other Road	0	0	4	0	6	10
Missing Data	0	0	0	4	29	33
Total People	7	35	144	330	2,087	2,603

Table 17: Killed or Injured Unbelted People in Crashes by Sex and Age Group in Valencia County, 2018

Age Groups	Unbelted People Killed or Injured ^{1,2}				Total People
	Male	Percent of Male	Female	Percent of Female	
0-4	0	0%	0	0%	0
5-9	0	0%	1	13%	1
10-14	0	0%	0	0%	0
15-19	5	33%	1	13%	6
20-24	1	7%	1	13%	2
25-29	2	13%	1	13%	3
30-34	2	13%	0	0%	2
35-39	2	13%	0	0%	2
40-44	0	0%	2	25%	2
45-49	0	0%	0	0%	0
50-54	1	7%	0	0%	1
55-59	1	7%	0	0%	1
60-64	0	0%	0	0%	0
65-69	0	0%	1	13%	1
70 +	1	7%	1	13%	2
Missing Data	0	0%	0	0%	0
Total People	15	100%	8	100%	23

¹ People injured are in one of three categories: suspected serious injury, suspected minor injury, or possible injury.

² Excludes people in or on buses, heavy trucks, motorcycles, or ATVs.

Figure 8: Seatbelt Use by People in Crashes with Fatal or Suspected Serious Injuries in Valencia County, 2014-2018

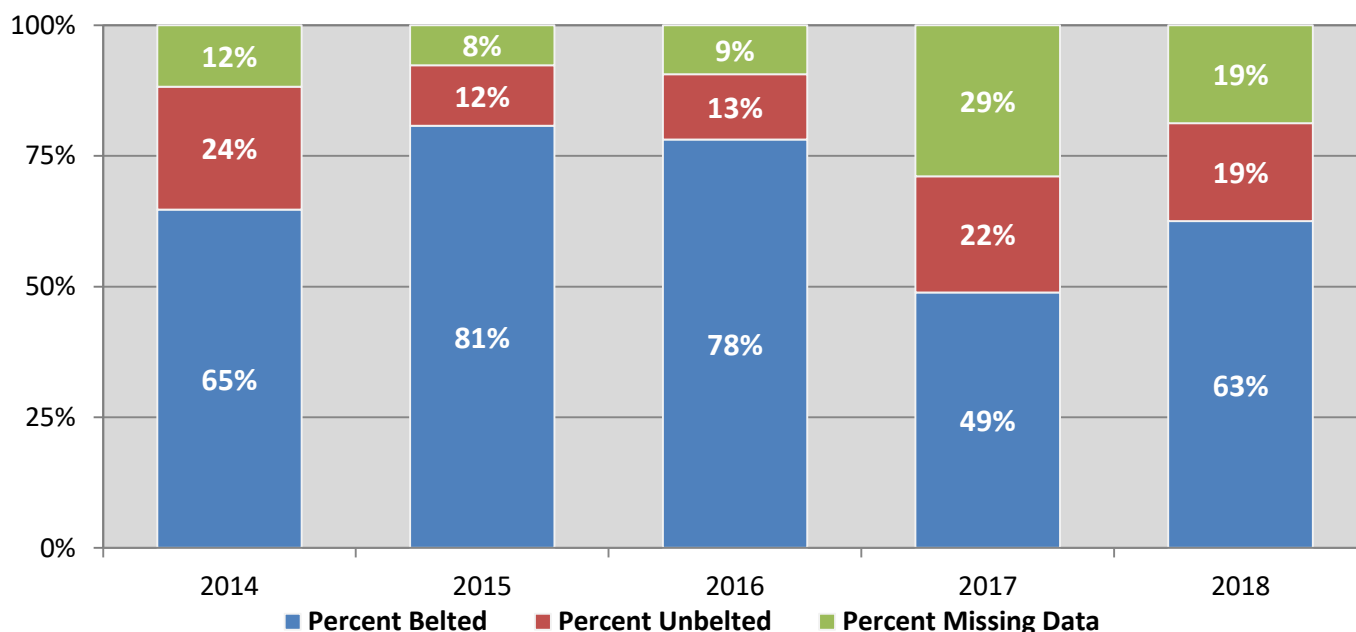
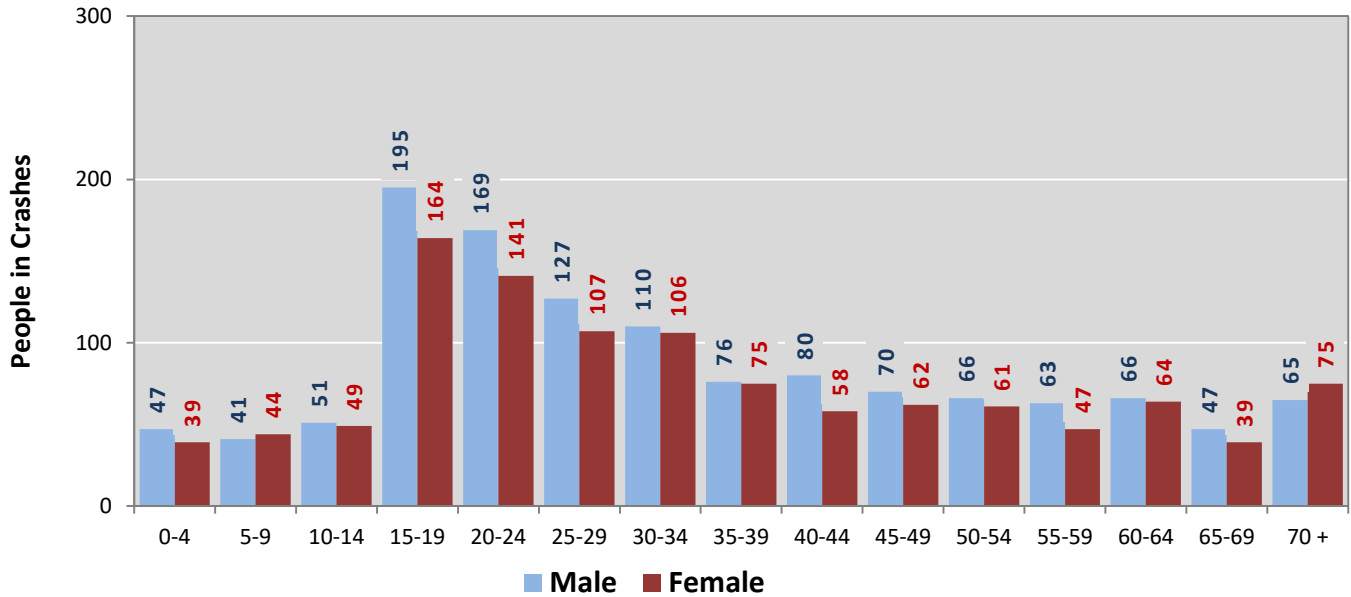
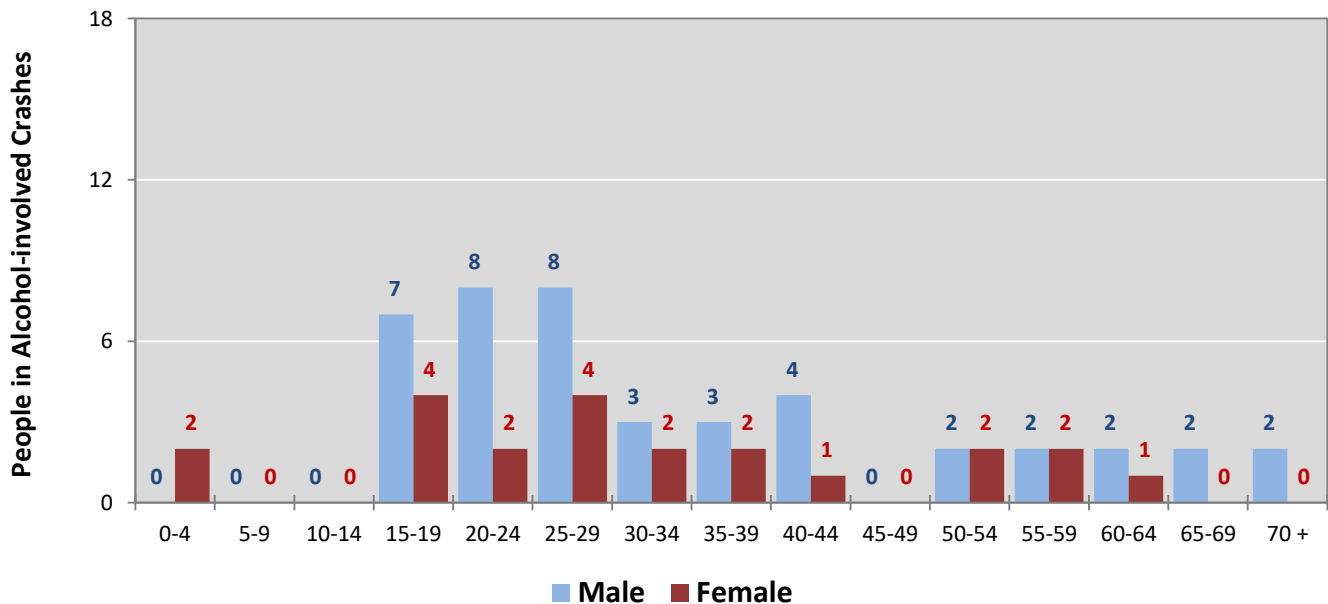


Figure 9: People in Crashes by Age Group and Sex in Valencia County, 2018



* In 2018, Valencia County had 313 people in crashes for which age or sex data were missing.

Figure 10: People in Alcohol-involved Crashes by Age Group and Sex in Valencia County, 2018



* In 2018, Valencia County had 4 people in alcohol-involved crashes for which age or sex data were missing.

Table 18: Pedestrians and Pedalcyclists in Crashes by Age Group in Valencia County, 2014-2018

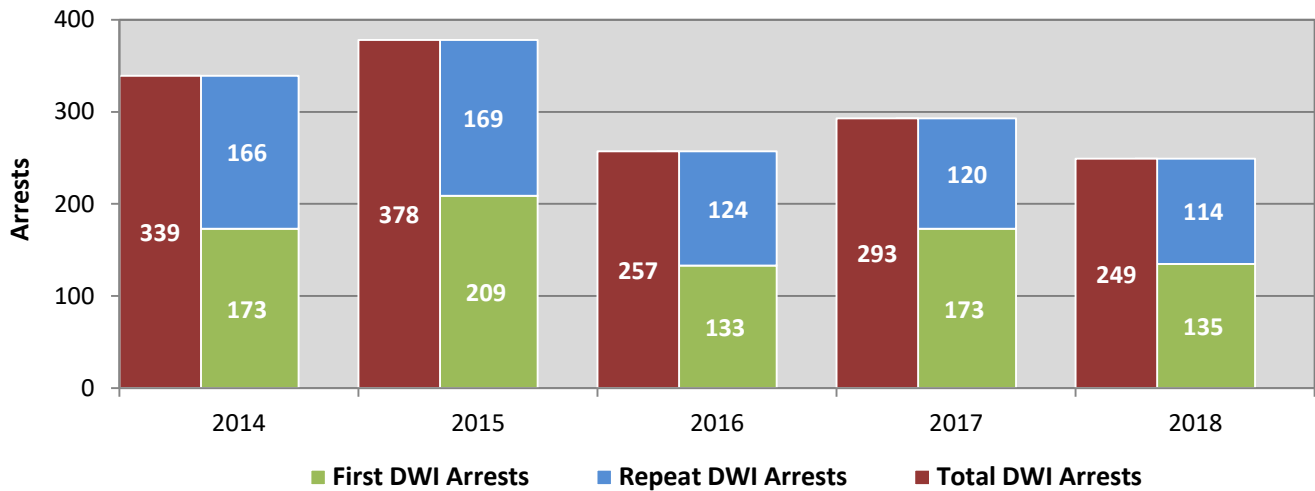
Age Groups	Pedestrians and Pedalcyclists ¹ in Crashes					5-Year Total People
	2014	2015	2016	2017	2018	
0-4	0	0	1	1	0	2
5-9	0	0	1	0	0	1
10-14	3	1	3	1	2	10
15-19	2	1	2	3	1	9
20-24	1	1	0	2	1	5
25-29	2	1	3	5	0	11
30-34	2	1	2	2	0	7
35-39	0	3	0	1	1	5
40-44	0	1	0	2	1	4
45-49	1	0	1	2	0	4
50-54	1	1	1	1	1	5
55-59	3	2	3	1	3	12
60-64	0	0	0	0	2	2
65-69	0	0	1	1	0	2
70 +	0	0	0	0	1	1
Missing Data	0	2	0	0	1	3
Total People	15	14	18	22	14	83

Table 19: Pedestrians and Pedalcyclists in Crashes by Alcohol Involvement and Severity of Injuries in Valencia County, 2018

Alcohol Involvement	Pedestrians and Pedalcyclists ¹ in Crashes					Total People
	Fatalities (Class K)	Suspected Serious Injuries (Class A)	Suspected Minor Injuries (Class B)	Possible Injuries (Class C)	No Apparent Injury (Class O)	
Total Pedalcyclists	0	0	2	2	0	4
Involved	0	0	0	0	0	0
Not Involved	0	0	2	2	0	4
Total Pedestrians	1	2	2	3	2	10
Involved	1	0	0	0	0	1
Not Involved	0	2	2	3	2	9
Total People	1	2	4	5	2	14

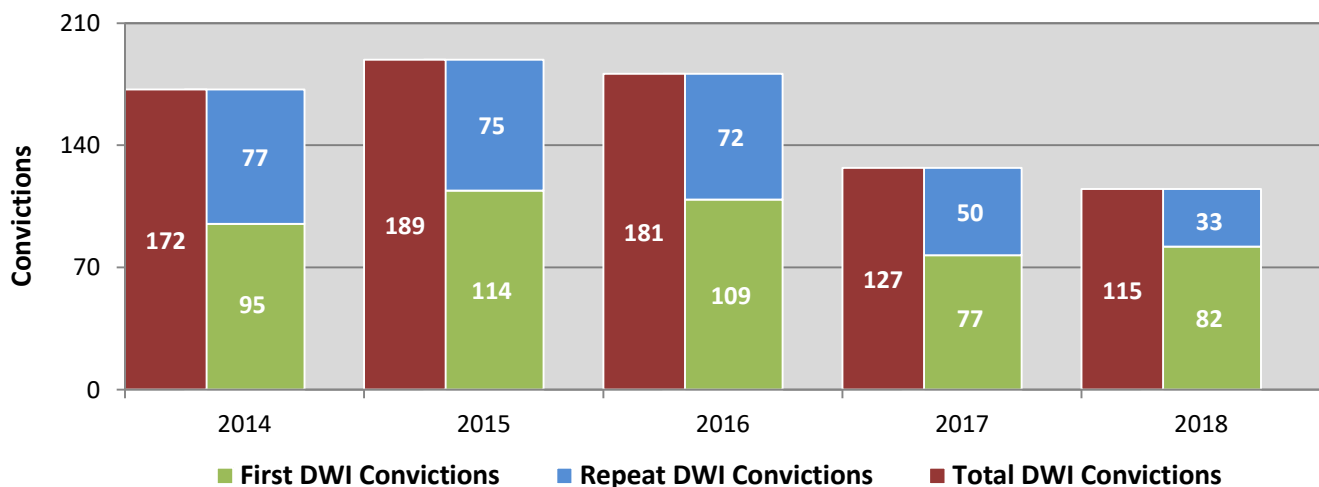
¹ Pedestrians and pedalcyclists are counted as non-motorized vehicles, when involved in a crash with a motor vehicle.

**Figure 11: DWI Arrests in Valencia County,
Showing First and Repeat DWI Arrests, 2014-2018**



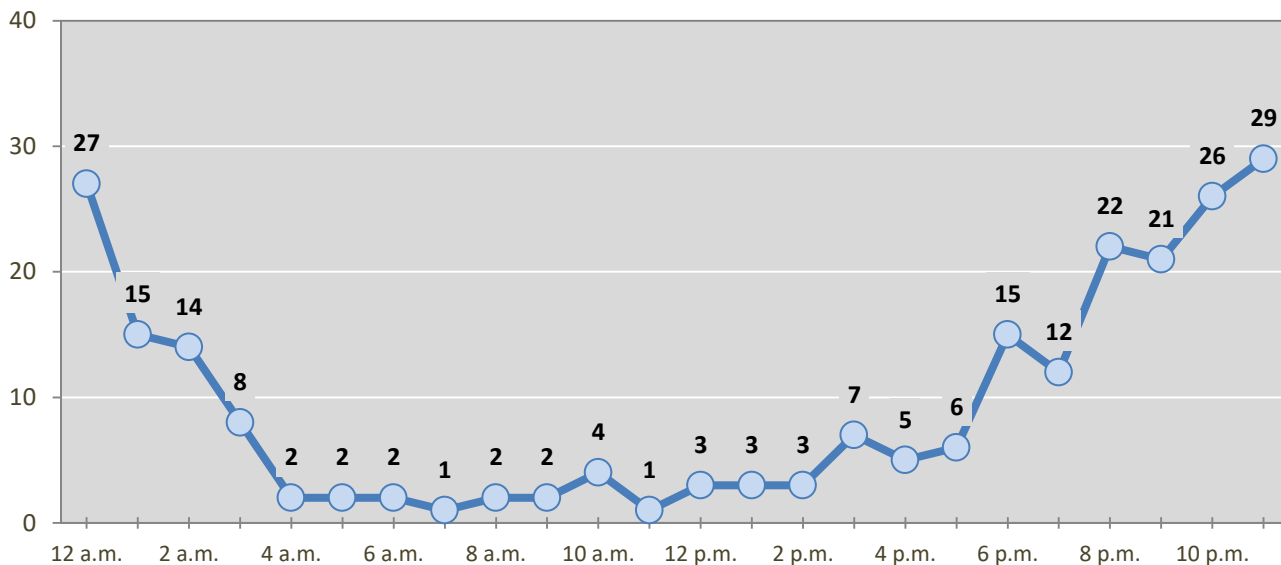
*Values are based upon the year of the arrest.

**Figure 12: DWI Convictions in Valencia County,
Showing First and Repeat DWI Convictions, 2014-2018**



*Values are based upon the year of the conviction.

Figure 13: DWI Arrests by Hour in Valencia County, 2018



* In 2018, Valencia County had 17 arrests for which hour data were missing.

Table 20: DWI Arrests by Day of Week in Valencia County, 2014-2018

Day of Week	Year					5-Year Average
	2014	2015	2016	2017	2018	
Sunday	54	81	49	43	40	53
Monday	36	22	30	34	22	29
Tuesday	36	27	15	24	20	24
Wednesday	31	39	19	20	24	27
Thursday	30	57	39	42	36	41
Friday	63	59	44	45	47	52
Saturday	89	93	61	85	60	78
Total Arrests	339	378	257	293	249	303

Table 21: Driver First DWI Arrests by Age Group in Valencia County, 2014-2018

Age Groups	Driver First DWI Arrests ¹				
	2014	2015	2016	2017	2018
15-19	23	21	15	12	6
20-24	36	44	33	48	39
25-29	31	38	27	28	24
30-34	25	20	20	24	17
35-39	14	20	9	13	11
40-44	11	19	5	8	12
45-49	12	11	4	11	10
50-54	4	16	7	13	7
55-59	6	9	5	6	4
60-64	6	6	3	4	3
65-69	4	2	2	4	2
70 +	1	3	2	2	0
Missing Data	0	0	1	0	0
Total Drivers	173	209	133	173	135

¹ Values are based upon the year of the arrest.

Table 22: Driver Repeat DWI Arrests by Age Group in Valencia County, 2014-2018

Age Groups	Driver Repeat DWI Arrests ¹				
	2014	2015	2016	2017	2018
15-19	0	1	0	1	1
20-24	11	13	8	7	10
25-29	20	21	9	18	10
30-34	35	21	16	19	17
35-39	17	17	22	15	12
40-44	18	31	23	18	16
45-49	17	17	15	17	13
50-54	15	25	16	14	11
55-59	17	15	7	7	8
60-64	9	3	3	2	10
65-69	4	4	5	2	3
70 +	2	1	0	0	3
Missing Data	1	0	0	0	0
Total Drivers	166	169	124	120	114

¹ Values are based upon the year of the arrest.

Table 23: Driver First DWI Convictions by Age Group in Valencia County, 2014-2018

Age Groups	Driver First DWI Convictions ¹				
	2014	2015	2016	2017	2018
15-19	4	14	2	3	3
20-24	22	21	28	19	26
25-29	16	25	24	13	19
30-34	14	9	13	14	13
35-39	13	8	10	8	6
40-44	5	8	12	4	3
45-49	5	7	5	5	3
50-54	5	9	6	3	3
55-59	6	7	4	2	5
60-64	2	5	3	4	0
65-69	3	1	1	2	1
70 +	0	0	1	0	0
Missing Data	0	0	0	0	0
Total Drivers	95	114	109	77	82

¹Values are based upon the year of the conviction.

Table 24: Driver Repeat DWI Convictions by Age Group in Valencia County, 2014-2018

Age Groups	Driver Repeat DWI Convictions ¹				
	2014	2015	2016	2017	2018
15-19	0	0	1	0	0
20-24	2	0	5	3	1
25-29	12	6	9	6	3
30-34	8	11	11	3	5
35-39	10	5	9	9	3
40-44	10	17	7	10	6
45-49	9	6	5	8	5
50-54	11	14	12	4	4
55-59	6	10	8	2	2
60-64	5	4	3	2	1
65-69	3	1	2	3	2
70 +	1	1	0	0	1
Missing Data	0	0	0	0	0
Total Drivers	77	75	72	50	33

¹Values are based upon the year of the conviction.

Table 25: Court Disposition of DWI Arrests for Valencia County and the State, 2018

Court Disposition of DWI Arrest ¹	Valencia County	Statewide	Percent of Statewide
Total DWI Arrests	249	10,205	2.4%
DWI Arrests Resulting in Convictions	121	4,641	2.6%
DWI Arrests Resulting in Dismissals ²	26	880	3.0%
DWI Arrests Awaiting Disposition	102	4,684	2.2%

¹ These are the number of DWI arrests in 2018 and whether the case resulted in a conviction or dismissal, or is still awaiting court disposition, as reported in the NM MVD Citation Tracking System (CTS) as of July 2019.

² For this table, a very small number of "not guilty" rulings may be included in the category Dismissals.

Table 26: Average Number of Days from Date of DWI Arrest to Date of Court Disposition in Valencia County and the State, 2018

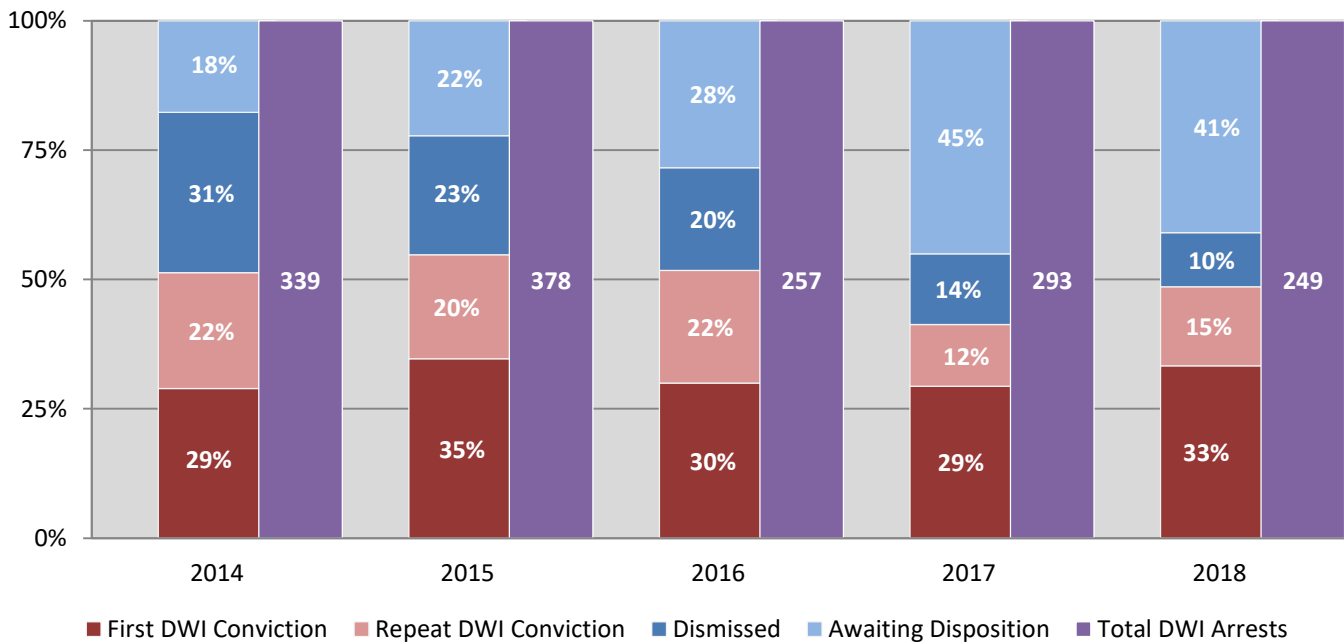
Court Disposition	Average Number of Days		Deviation from Statewide Average
	Valencia County	Statewide	
DWI Conviction	174	145	29
DWI Dismissal	176	153	23

Table 27: Court Disposition of DWI Arrests in Valencia County, 2014-2018

Year of DWI Arrest ¹	Court Disposition				Total DWI Arrests
	First DWI Conviction	Repeat DWI Conviction	Dismissed	Awaiting Disposition	
2014	98	76	105	60	339
2015	131	76	87	84	378
2016	77	56	51	73	257
2017	86	35	40	132	293
2018	83	38	26	102	249

¹ Values are based upon the year of the arrest.

Figure 14: Court Dispositions by Percentage of DWI Arrests in Valencia County, 2014-2018



*Table 27 contains the values used to calculate percentages shown in Figure 14.