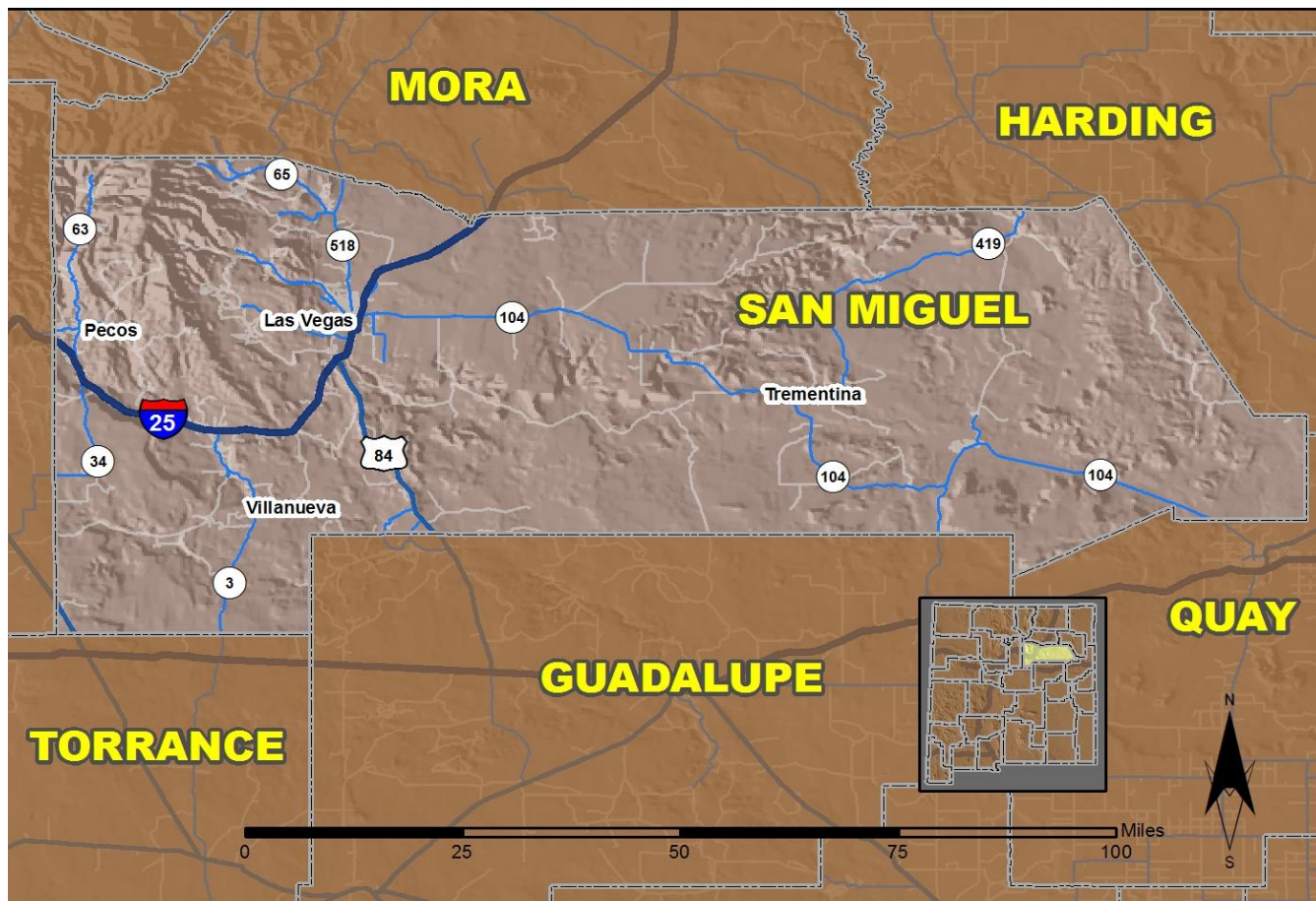


# 2019 Community Report

## Las Vegas



Produced for the New Mexico Department of Transportation,  
Traffic Safety Division, Traffic Records Bureau,  
Under Contract 6093 by the University of New Mexico,  
Geospatial and Population Studies, Traffic Research Unit

Distributed in compliance with New Mexico Statute 66-7-214  
as a reference source regarding New Mexico traffic crashes

For the purposes of this report, data are compiled by the University of New Mexico, Geospatial and Population Studies, Traffic Research Unit (TRU), on behalf of the New Mexico Department of Transportation (NMDOT). Data in this report may differ from that in other data sources, such as the Federal Fatality Analysis Reporting System (FARS), due to the timing of publications and rules for how data are compiled and maintained in Federal vs. State databases. If you have questions regarding this report, please contact the Traffic Safety Division at 505-827-0427.

<https://gps.unm.edu/tru/crash-reports/community-reports>

## Definitions

---

**Aggravated DWI** – A driver arrested for 1) driving with a BAC of 0.16 or higher, 2) driving under the influence of alcohol or drugs and causing bodily injury to a human being as a result, or 3) driving under the influence of alcohol or drugs and refusing to submit to a BAC test at the time of arrest for DWI.

**Alcohol-involved Crash** – A crash for which the Uniform Crash Report indicated that 1) a DWI citation was issued, 2) alcohol was a contributing factor, or 3) a person in control of a vehicle (including a pedestrian or pedalcyclist) was suspected of being under the influence of alcohol.

**Alcohol-involved Driver** – A person in control of a vehicle who was cited for DWI or indicated on the Uniform Crash Report as being either suspected or determined by testing to be under the influence of alcohol. There can be multiple alcohol-involved drivers in a single alcohol-involved crash.

**Crash** – A reported incident on a public roadway involving one or more motor vehicles that resulted in death, personal injury, or at least \$500 in property damage. Crashes on private property (such as a parking lot) are not included.

**DWI Arrest (Citation)** – In this report, a DWI arrest (a.k.a. a DWI citation) is a driver arrested for either DWI or aggravated DWI. New Mexico’s legal limit for presumption of driving while intoxicated (DWI) is 0.08 for non-commercial drivers older than 21 years of age, 0.04 for commercial vehicle drivers, and 0.02 for drivers younger than 21 years of age.

**DWI Conviction** – A driver convicted of driving under the intoxicating influence of alcohol, narcotics, or pathogenic drugs, including aggravated DWI.

**Fatal Crash** – A crash in which at least one person was killed. More than one person can be killed in a single fatal crash.

**Fatalities** – The number of people killed in a crash. The terms “killed” and “deaths” are synonymous with “fatalities.” A fatality is crash-related if it occurs at the time of the crash or if the person(s) involved in the crash dies within 30 days.

**Injury Crash** – A reported crash in which at least one person was injured. Injury crashes involve at least one suspected serious injury (Class A), suspected minor injury (Class B), or possible injury (Class C). Fatal crashes are not included.

**Missing Data** – An indication that the applicable field on the UCR form was left blank or contained an invalid code. Starting with crashes that occurred in 2012, improvements in the identification of missing data in the NMDOT crash database led to an increase in the reported amount of missing data.

**Pedalcyclist** – A person riding a mechanism of transport that is powered solely by pedals (a.k.a. bicyclist).

**Pedestrian** – A person on foot, walking, running, jogging, hiking, sitting or lying down who is involved in a motor vehicle traffic crash.

## Sources

---

**Crash Data** – New Mexico Department of Transportation, Traffic Safety Division, Traffic Records Bureau, Traffic Crash Database, as of the report date below. Crash data are compiled using NMDOT Uniform Crash Reports (UCR), submitted by law enforcement agencies in the state, for any incident on a public roadway involving one or more motor vehicles that resulted in death, injury, or at least \$500 in property damage. These reports are processed by the NMDOT Traffic Records Bureau and analyzed by the University of New Mexico, Geospatial and Population Studies, Traffic Research Unit (TRU).

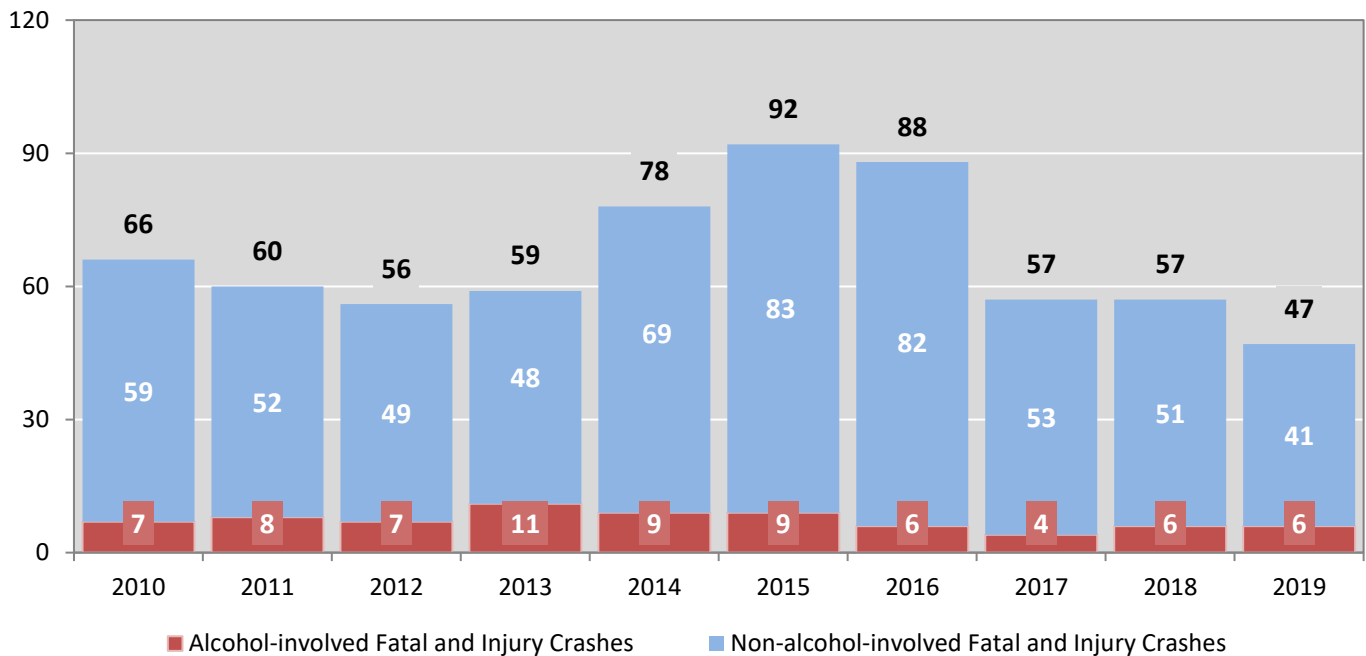
**DWI Citation Tracking System (CTS)** – New Mexico Taxation and Revenue Department (NM TRD), Motor Vehicle Division (MVD), DWI Citation Tracking System (CTS), as of October 2020. Repeat offenders are identified by the combination of account key, arrest date, and citation number. County data are based upon the county where the arrest took place. City data are based upon the city where the offender resides.

**Urban Areas** – Areas defined by the New Mexico Department of Transportation, Asset Management and Planning, 2010 U.S. Census Urbanized Area Boundaries, NMDOT-Adjusted, and U.S. Census Urban Clusters, August 21, 2013. Urban areas for crash years 2013-2017 include a 1/2 mile buffer extending out from those urban boundaries. In crashes before 2013, “urban” was defined as a town or city with a population of at least 2,500 people.

**Table 1: Total Crashes and Alcohol-involved Crashes by  
Crash Severity in Las Vegas, 2010-2019**

Year	Total Crashes				Alcohol-involved Crashes			
	Fatal	Injury	Property Damage Only	Total	Fatal	Injury	Property Damage Only	Total
2010	2	64	239	305	1	6	13	20
2011	2	58	319	379	1	7	17	25
2012	3	53	251	307	3	4	15	22
2013	0	59	208	267	0	11	16	27
2014	1	77	246	324	1	8	9	18
2015	1	91	283	375	0	9	11	20
2016	1	87	249	337	1	5	9	15
2017	0	57	270	327	0	4	12	16
2018	2	55	201	258	1	5	3	9
2019	0	47	232	279	0	6	11	17

**Figure 1: Alcohol-involved Fatal and Injury Crashes Compared with  
Non-alcohol-involved Fatal and Injury Crashes in Las Vegas, 2010-2019**



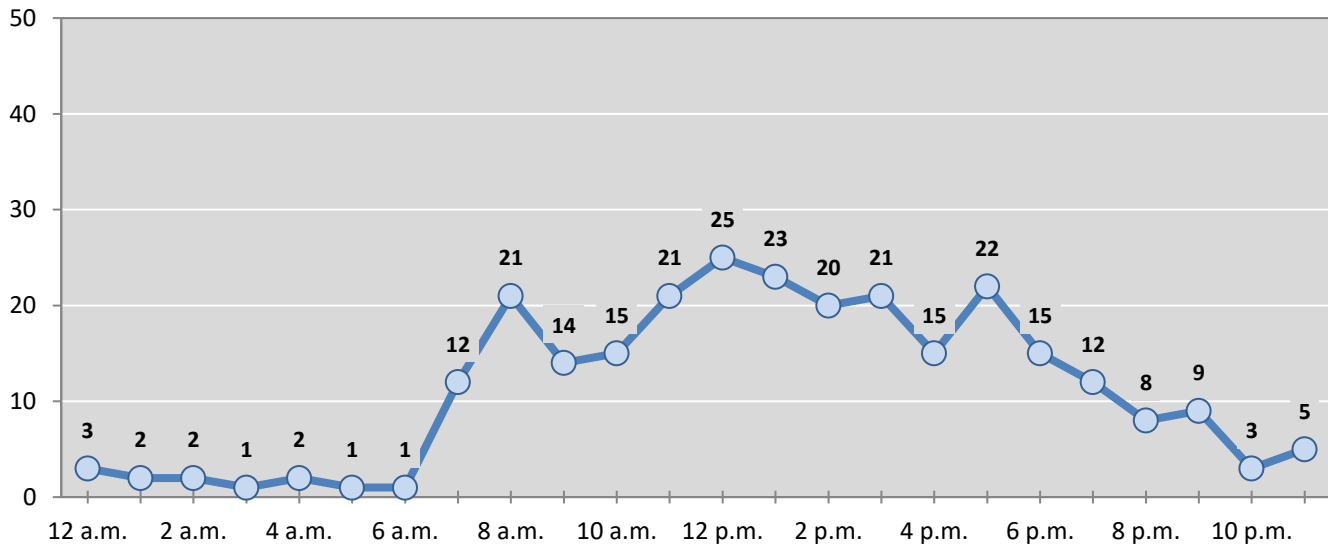
**Table 2: Crashes by Month in Las Vegas, 2015-2019**

Month	Crashes					5-Year Average
	2015	2016	2017	2018	2019	
January	36	33	26	31	32	<b>32</b>
February	25	30	22	23	18	<b>24</b>
March	38	29	23	17	21	<b>26</b>
April	24	21	31	29	20	<b>25</b>
May	24	29	29	22	15	<b>24</b>
June	25	23	22	26	25	<b>24</b>
July	30	29	25	7	24	<b>23</b>
August	24	27	31	3	15	<b>20</b>
September	45	33	32	26	22	<b>32</b>
October	23	33	31	26	41	<b>31</b>
November	41	18	25	15	26	<b>25</b>
December	40	32	30	33	20	<b>31</b>
<b>Total Crashes</b>	<b>375</b>	<b>337</b>	<b>327</b>	<b>258</b>	<b>279</b>	<b>315</b>

**Table 3: Alcohol-involved Crashes by Month in Las Vegas, 2015-2019**

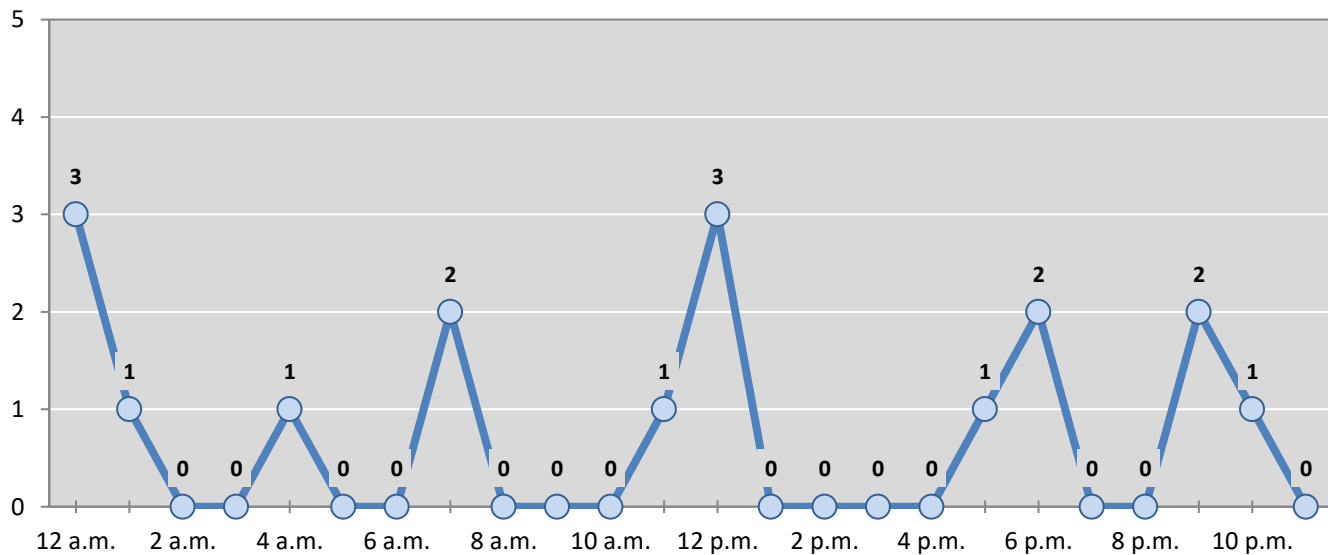
Month	Alcohol-involved Crashes					5-Year Average
	2015	2016	2017	2018	2019	
January	1	3	1	1	1	<b>1</b>
February	1	1	0	0	2	<b>1</b>
March	4	2	2	0	2	<b>2</b>
April	1	1	0	0	3	<b>1</b>
May	2	0	3	0	1	<b>1</b>
June	0	3	1	3	0	<b>1</b>
July	3	0	1	0	1	<b>1</b>
August	1	1	0	0	2	<b>1</b>
September	1	1	4	2	0	<b>2</b>
October	3	1	1	2	4	<b>2</b>
November	1	1	1	0	1	<b>1</b>
December	2	1	2	1	0	<b>1</b>
<b>Total Crashes</b>	<b>20</b>	<b>15</b>	<b>16</b>	<b>9</b>	<b>17</b>	<b>15</b>

**Figure 2: Crashes by Hour in Las Vegas, 2019**



\* In 2019, Las Vegas had 6 crashes for which hour data were missing.

**Figure 3: Alcohol-involved Crashes by Hour in Las Vegas, 2019**



\* In 2019, Las Vegas had 0 alcohol-involved crashes for which hour data were missing.

**Table 4: Alcohol-involved Crashes by Day of Week in Las Vegas, 2015-2019**

Day of Week	Alcohol-involved Crashes					5-Year Average
	2015	2016	2017	2018	2019	
Sunday	0	1	4	2	3	2
Monday	2	2	2	1	1	2
Tuesday	3	1	1	4	1	2
Wednesday	3	3	2	1	2	2
Thursday	3	3	1	0	3	2
Friday	5	3	2	0	3	3
Saturday	4	2	4	1	4	3
<b>Total Crashes</b>	<b>20</b>	<b>15</b>	<b>16</b>	<b>9</b>	<b>17</b>	<b>15</b>

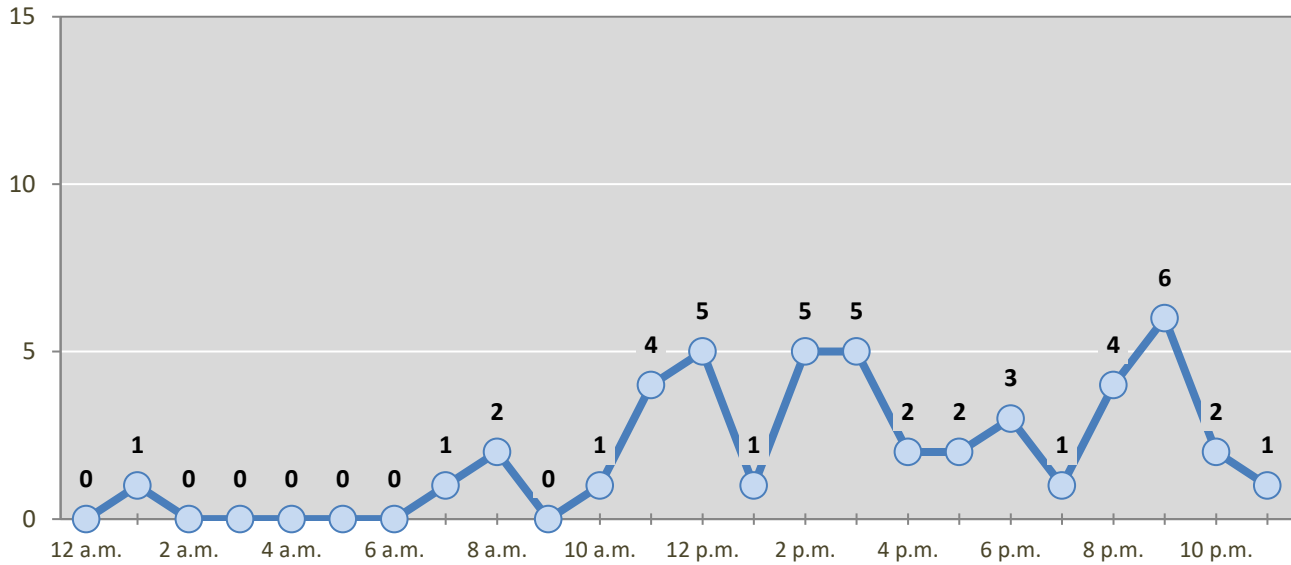
**Table 5: Fatal and Injury Crashes by Day of Week in Las Vegas, 2015-2019**

Day of Week	Fatal and Injury Crashes					5-Year Average
	2015	2016	2017	2018	2019	
Sunday	6	11	8	3	2	6
Monday	18	10	8	13	6	11
Tuesday	12	12	10	10	6	10
Wednesday	21	15	10	8	2	11
Thursday	14	12	9	10	8	11
Friday	14	16	10	6	11	11
Saturday	7	12	2	7	12	8
<b>Total Crashes</b>	<b>92</b>	<b>88</b>	<b>57</b>	<b>57</b>	<b>47</b>	<b>68</b>

**Table 6: Pedestrian and Pedalcyclist Crashes by Day of Week in Las Vegas, 2015-2019**

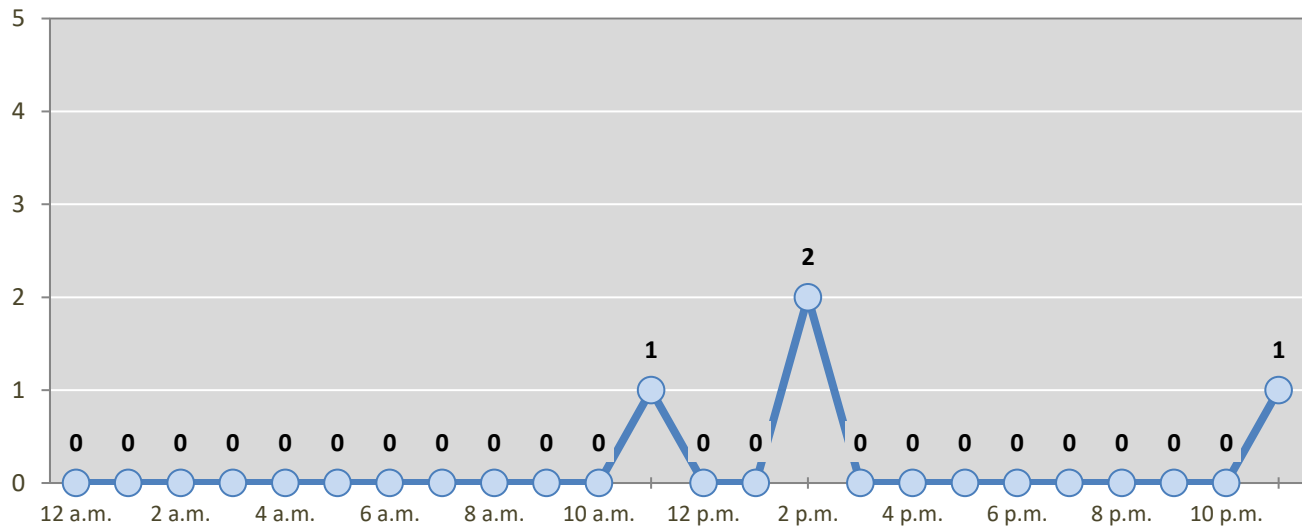
Day of Week	Pedestrian and Pedalcyclist Crashes					5-Year Average
	2015	2016	2017	2018	2019	
Sunday	0	1	0	0	0	0
Monday	1	0	3	0	1	1
Tuesday	1	0	1	1	0	1
Wednesday	0	2	0	2	0	1
Thursday	1	1	1	2	2	1
Friday	1	1	1	0	1	1
Saturday	0	2	0	0	0	0
<b>Total Crashes</b>	<b>4</b>	<b>7</b>	<b>6</b>	<b>5</b>	<b>4</b>	<b>5</b>

**Figure 4: Fatal and Injury Crashes by Hour in Las Vegas, 2019**



\* In 2019, Las Vegas had 1 crashes for which hour data were missing.

**Figure 5: Pedestrian and Pedalcyclist Crashes by Hour in Las Vegas, 2019**



\* In 2019, Las Vegas had 0 crashes for which hour data were missing.

**Table 7: Severity of Injuries to People in Crashes by Rural and Urban Location in Las Vegas, 2019**

Urban and Rural Locations by Alcohol-involvement	People in Crashes by Severity of Injuries					Total People
	Fatalities (Class K)	Suspected Serious Injuries (Class A)	Suspected Minor Injuries (Class B)	Possible Injuries (Class C)	No Apparent Injuries (Class O)	
<b>People in Alcohol-involved Crashes</b>	<b>0</b>	<b>1</b>	<b>4</b>	<b>3</b>	<b>28</b>	<b>36</b>
Urban	0	1	1	3	28	33
Rural Non-Interstate	0	0	0	0	0	0
Rural Interstate	0	0	3	0	0	3
<b>People in Crashes</b>	<b>0</b>	<b>8</b>	<b>18</b>	<b>39</b>	<b>562</b>	<b>627</b>
Urban	0	7	12	36	553	608
Rural Non-Interstate	0	0	1	0	5	6
Rural Interstate	0	1	5	3	4	13
<b>Percent in Alcohol-involved Crashes</b>	<b>0%</b>	<b>13%</b>	<b>22%</b>	<b>8%</b>	<b>5%</b>	<b>6%</b>

**Table 8: Total Crashes by Roadway System and Crash Severity in Las Vegas, 2015-2019**

Crash Severity by System	Crashes by Year					5-Year Average
	2015	2016	2017	2018	2019	
<b>Total Rural Interstate</b>	<b>0</b>	<b>0</b>	<b>0</b>	<b>9</b>	<b>8</b>	<b>3</b>
Fatal Crash	0	0	0	1	0	0
Injury Crash	0	0	0	3	6	2
Property Damage Only Crash	0	0	0	5	2	1
<b>Total Rural Non-Interstate</b>	<b>0</b>	<b>0</b>	<b>0</b>	<b>9</b>	<b>2</b>	<b>2</b>
Fatal Crash	0	0	0	1	0	0
Injury Crash	0	0	0	1	1	0
Property Damage Only Crash	0	0	0	7	1	2
<b>Total Urban</b>	<b>375</b>	<b>337</b>	<b>327</b>	<b>240</b>	<b>269</b>	<b>309</b>
Fatal Crash	1	1	0	0	0	0
Injury Crash	91	87	57	51	40	65
Property Damage Only Crash	283	249	270	189	229	244



**Table 9: Total Crashes by Crash Classification in Las Vegas, 2015-2019**

Crash Classification	Total Crashes by Year					5-Year Average
	2015	2016	2017	2018	2019	
Animal	5	5	3	2	2	3
Fixed Object	28	27	33	29	19	27
Other (Non-Collision)	2	3	3	4	1	3
Other (Object)	11	5	3	3	7	6
Other Vehicle	277	233	234	170	208	224
Overturn/Rollover	4	5	3	6	6	5
Parked Vehicle	24	20	40	33	24	28
Pedalcyclist	2	1	1	1	2	1
Pedestrian	3	6	5	5	2	4
Railroad Train	0	0	0	0	0	0
Rollover	3	2	2	2	4	3
Vehicle on Other Road	4	3	0	1	1	2
Missing Data	12	27	0	2	3	9
<b>Total Crashes</b>	<b>375</b>	<b>337</b>	<b>327</b>	<b>258</b>	<b>279</b>	<b>315</b>

**Table 10: Vehicles in Crashes by Vehicle Type in Las Vegas, 2015-2019**

Vehicle Type <sup>1</sup>	Vehicles in Crashes by Vehicle Type					5-Year Average
	2015	2016	2017	2018	2019	
Bus	0	2	3	1	0	1
Motorcycle/ATV	8	5	13	6	6	8
Passenger	334	305	319	204	253	283
Pedalcyclist	2	1	1	2	2	2
Pedestrian	2	7	6	4	2	4
Pickup	120	126	115	104	119	117
Semi	11	9	9	5	15	10
Van/SUV/4WD	88	110	92	81	88	92
Other Vehicle	49	8	6	16	1	16
Missing Data	103	69	57	66	36	66
<b>Total Vehicles</b>	<b>717</b>	<b>642</b>	<b>621</b>	<b>489</b>	<b>522</b>	<b>598</b>

<sup>1</sup> Pedestrians and pedalcyclists are counted as non-motorized vehicles, when involved in a crash with a motor vehicle. See Page 17 for data on drivers of non-motorized vehicles in crashes (i.e. pedestrians and pedalcyclists).

**Table 11: Motor Vehicle Drivers in Crashes by Vehicle Type and Age Group in Las Vegas, 2019**

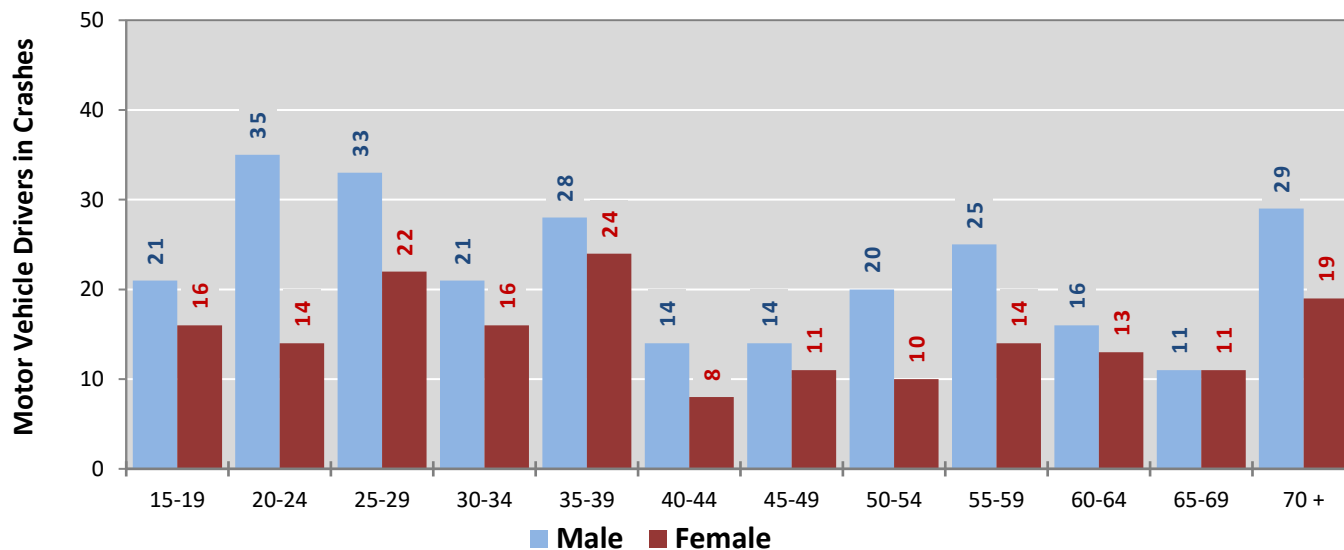
Age Groups	Motor Vehicle <sup>1</sup> Drivers by Vehicle Type and Age Group								Total Drivers
	Bus	Motor-cycle	Passenger	Pickup	Semi	Van 4WD SUV	Other Vehicle	Missing Data	
15-19	0	0	18	13	0	6	0	0	37
20-24	0	0	31	9	1	7	0	1	49
25-29	0	1	35	8	1	9	0	1	55
30-34	0	0	15	10	4	8	0	0	37
35-39	0	1	30	12	1	7	0	1	52
40-44	0	0	9	6	1	4	1	1	22
45-49	0	1	16	5	1	1	0	1	25
50-54	0	0	14	9	1	5	0	1	30
55-59	0	2	16	11	0	8	0	2	39
60-64	0	0	10	7	2	8	0	2	29
65-69	0	0	7	5	2	7	0	1	22
70 +	0	0	24	14	0	9	0	1	48
Missing Data	0	1	28	10	1	9	0	24	73
<b>Total Drivers</b>	<b>0</b>	<b>6</b>	<b>253</b>	<b>119</b>	<b>15</b>	<b>88</b>	<b>1</b>	<b>36</b>	<b>518</b>

**Table 12: Alcohol-involved Motor Vehicle Drivers in Crashes by Vehicle Type and Age Group in Las Vegas, 2019**

Age Groups	Alcohol-involved Motor Vehicle <sup>1</sup> Drivers by Vehicle Type and Age Group								Total Drivers
	Bus	Motor-cycle	Passenger	Pickup	Semi	Van 4WD SUV	Other Vehicle	Missing Data	
15-19	0	0	0	1	0	0	0	0	1
20-24	0	0	5	1	0	0	0	0	6
25-29	0	0	2	0	0	1	0	0	3
30-34	0	0	0	0	0	0	0	0	0
35-39	0	0	1	1	0	0	0	0	2
40-44	0	0	0	1	0	1	0	0	2
45-49	0	0	0	0	0	0	0	0	0
50-54	0	0	0	0	0	0	0	0	0
55-59	0	0	1	0	0	0	0	0	1
60-64	0	0	0	0	0	0	0	0	0
65-69	0	0	0	0	0	0	0	0	0
70 +	0	0	0	0	0	0	0	0	0
Missing Data	0	0	1	0	0	0	0	0	1
<b>Total Drivers</b>	<b>0</b>	<b>0</b>	<b>10</b>	<b>4</b>	<b>0</b>	<b>2</b>	<b>0</b>	<b>0</b>	<b>16</b>

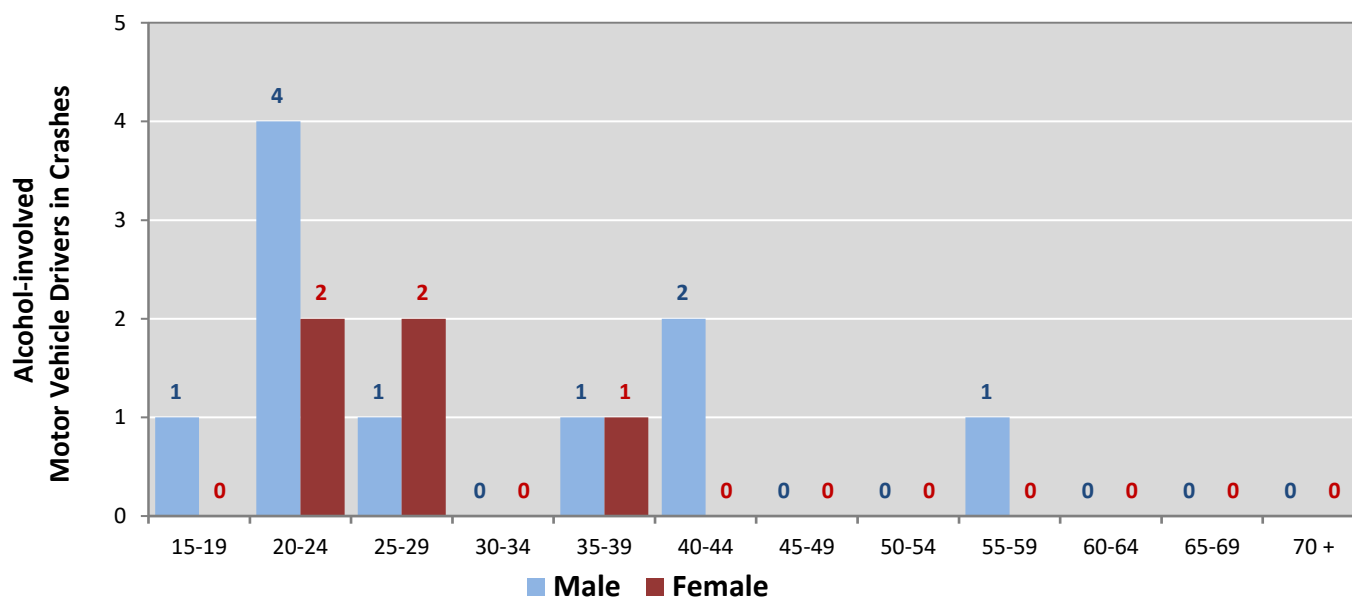
<sup>1</sup> See Page 17 for data on drivers of non-motorized vehicles in crashes (i.e. pedestrians and pedalcyclists).

**Figure 6: Motor Vehicle Drivers in Crashes by Age Group and Sex in Las Vegas, 2019**



\* In 2019, Las Vegas had 73 drivers in crashes for which age or sex data were missing.

**Figure 7: Alcohol-involved Motor Vehicle Drivers in Crashes by Age Group and Sex in Las Vegas, 2019**



\* In 2019, Las Vegas had 1 drivers in crashes for which age or sex data were missing.

**Table 13: Alcohol-involved Motor Vehicle Drivers Under 21  
(Ages 15-20) in Crashes in Las Vegas, 2015-2019**

Age <sup>1</sup>	Year					5-Year Total
	2015	2016	2017	2018	2019	
15	0	0	0	0	0	0
16	0	0	0	0	0	0
17	0	0	0	0	0	0
18	0	0	0	0	0	0
19	2	0	0	0	1	3
20	2	1	0	0	0	3
<b>Total Drivers</b>	<b>4</b>	<b>1</b>	<b>0</b>	<b>0</b>	<b>1</b>	<b>6</b>

**Table 14: Motor Vehicle Drivers Under 21 (Ages 15-20) in Crashes  
by Age, Sex and Alcohol-involvement in Las Vegas, 2019**

Age <sup>1</sup>	Total Drivers				Alcohol-involved Drivers			
	Sex		Total Drivers	Percent of Total	Sex		Total Drivers	Percent of Total
	Male	Female			Male	Female		
15	4	2	6	13%	0	0	0	0%
16	1	4	5	10%	0	0	0	0%
17	7	4	11	23%	0	0	0	0%
18	4	2	6	13%	0	0	0	0%
19	5	4	9	19%	1	0	1	100%
20	8	3	11	23%	0	0	0	0%
<b>Total Drivers</b>	<b>29</b>	<b>19</b>	<b>48</b>	<b>100%</b>	<b>1</b>	<b>0</b>	<b>1</b>	<b>100%</b>

<sup>1</sup> For analysis of drivers under age 21, when the driver age or sex are not identified on the crash report (typically hit-and-run drivers), the driver data are considered unreliable and are excluded from the analysis.

**Table 15: Frequency of Contributing Factors in Crashes  
by Crash Severity in Las Vegas, 2019**

Contributing Factors	Frequency of Contributing Factor <sup>1</sup> by Crash Severity			
	Frequency in Fatal Crashes	Frequency in Injury Crashes	Frequency in Property Damage Only Crashes	Frequency in All Crashes
<b>Human</b>	<b>0</b>	<b>78</b>	<b>349</b>	<b>427</b>
Driver Inattention	0	20	111	131
Failed to Yield Right of Way	0	8	56	64
Excessive Speed	0	11	28	39
Other Improper Driving	0	5	30	35
Improper Backing	0	1	32	33
Following Too Closely	0	5	22	27
Speed Too Fast for Conditions	0	2	16	18
Alcohol Involved	0	6	11	17
Passed Stop Sign	0	6	8	14
Made Improper Turn	0	2	6	8
Improper Overtaking	0	1	6	7
Disregarded Traffic Signal	0	1	5	6
Avoid No Contact - Vehicle	0	0	5	5
Cell Phone	0	3	1	4
Improper Lane Change	0	0	4	4
Drug Involved	0	2	2	4
Drove Left Of Center	0	1	2	3
Failed to Yield to Police Vehicle	0	1	1	2
High Speed Pursuit	0	1	1	2
Avoid No Contact - Other	0	1	0	1
Driverless Moving Vehicle	0	0	1	1
Pedestrian Error	0	1	0	1
Vehicle Skidded Before Brake	0	0	1	1
Failed to Yield to Emergency Vehicle	0	0	0	0
Texting	0	0	0	0
<b>Vehicle</b>	<b>0</b>	<b>1</b>	<b>3</b>	<b>4</b>
Inadequate Brakes	0	0	2	2
Other Mechanical Defect	0	1	1	2
Defective Steering	0	0	0	0
Defective Tires	0	0	0	0
<b>Environment</b>	<b>0</b>	<b>0</b>	<b>4</b>	<b>4</b>
Road Defect	0	0	4	4
Low Visibility Due to Smoke	0	0	0	0
Traffic Control Not Functioning	0	0	0	0
<b>Other</b>	<b>0</b>	<b>34</b>	<b>186</b>	<b>220</b>
None	0	24	130	154
Other - No Driver Error	0	10	56	66

<sup>1</sup> Multiple contributing factors may be reported for any vehicle in a crash.

**Table 16: People in Crashes by Crash Classification and Severity of Injuries in Las Vegas, 2019**

Crash Classification	People in Crashes by Severity of Injuries					Total People
	Fatalities (Class K)	Suspected Serious Injuries (Class A)	Suspected Minor Injuries (Class B)	Possible Injuries (Class C)	No Apparent Injuries (Class O)	
Animal	0	0	0	0	3	3
Fixed Object	0	0	2	3	16	21
Other (Non-Collision)	0	0	0	0	2	2
Other (Object)	0	0	0	3	7	10
Other Vehicle	0	7	8	26	461	502
Overturn/Rollover	0	0	5	0	7	12
Parked Vehicle	0	0	0	1	47	48
Pedalcyclist	0	0	1	1	5	7
Pedestrian	0	1	0	1	2	4
Railroad Train	0	0	0	0	0	0
Rollover	0	0	2	2	2	6
Vehicle on Other Road	0	0	0	1	1	2
Missing Data	0	0	0	1	9	10
<b>Total People</b>	<b>0</b>	<b>8</b>	<b>18</b>	<b>39</b>	<b>562</b>	<b>627</b>

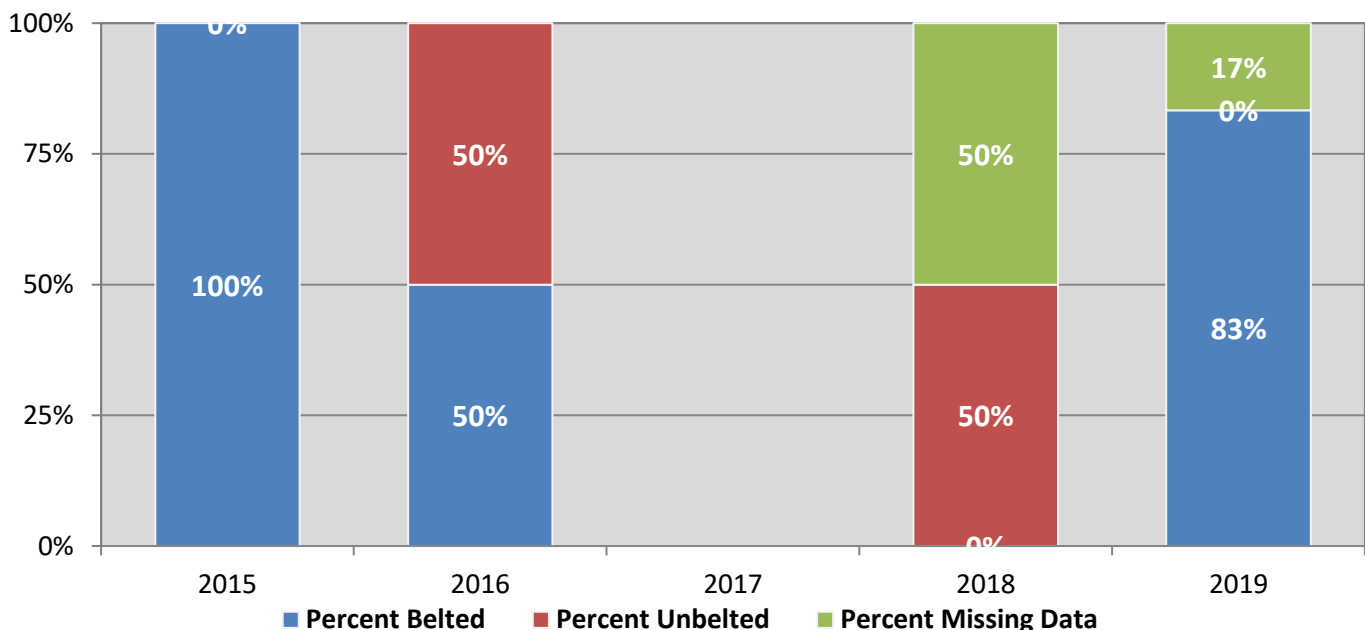
**Table 17: Killed or Injured Unbelted People in Crashes  
by Sex and Age Group in Las Vegas, 2019**

Age Groups	Unbelted People Killed or Injured <sup>1,2</sup>				Total People
	Male	Percent of Male	Female	Percent of Female	
0-4	0	0%	0	0%	0
5-9	0	0%	0	0%	0
10-14	0	0%	0	0%	0
15-19	0	0%	0	0%	0
20-24	1	33%	0	0%	1
25-29	0	0%	0	0%	0
30-34	0	0%	0	0%	0
35-39	1	33%	0	0%	1
40-44	0	0%	0	0%	0
45-49	0	0%	0	0%	0
50-54	0	0%	0	0%	0
55-59	1	33%	0	0%	1
60-64	0	0%	0	0%	0
65-69	0	0%	0	0%	0
70 +	0	0%	0	0%	0
Missing Data	0	0%	0	0%	0
<b>Total People</b>	<b>3</b>	<b>100%</b>	<b>0</b>	<b>0%</b>	<b>3</b>

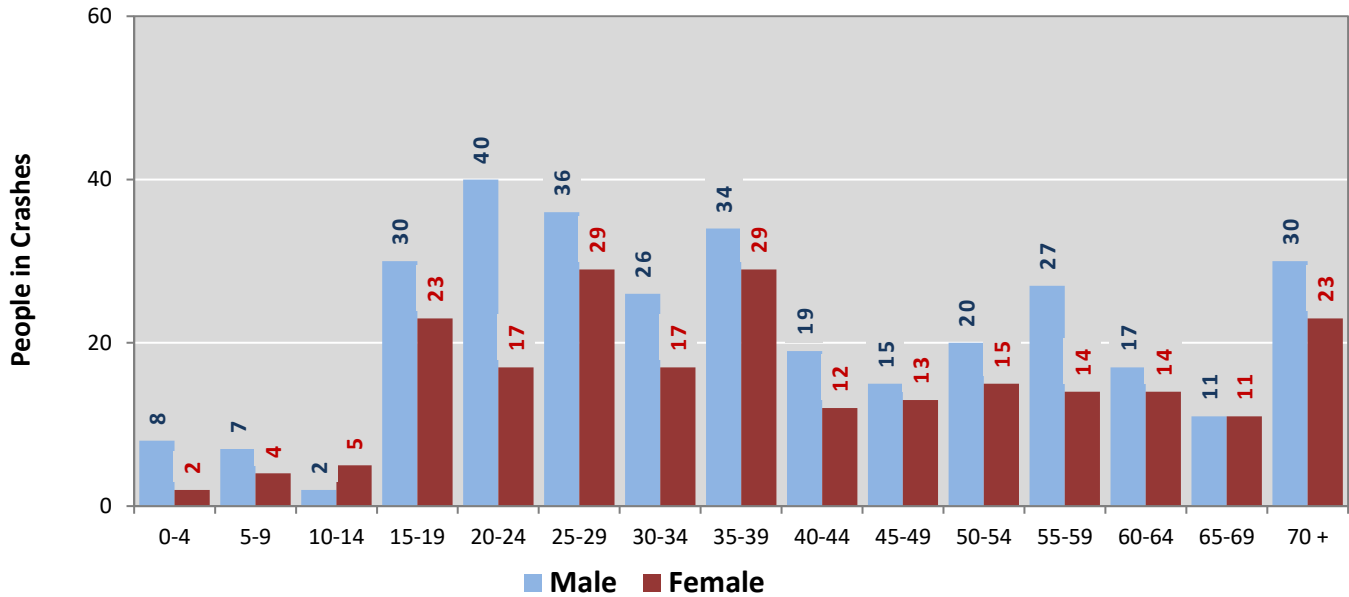
<sup>1</sup> People injured are in one of three categories: suspected serious injury, suspected minor injury, or possible injury.

<sup>2</sup> Excludes people in or on buses, heavy trucks, motorcycles, or ATVs.

**Figure 8: Seatbelt Use by People in Crashes with Fatal or  
Suspected Serious Injuries in Las Vegas, 2015-2019**

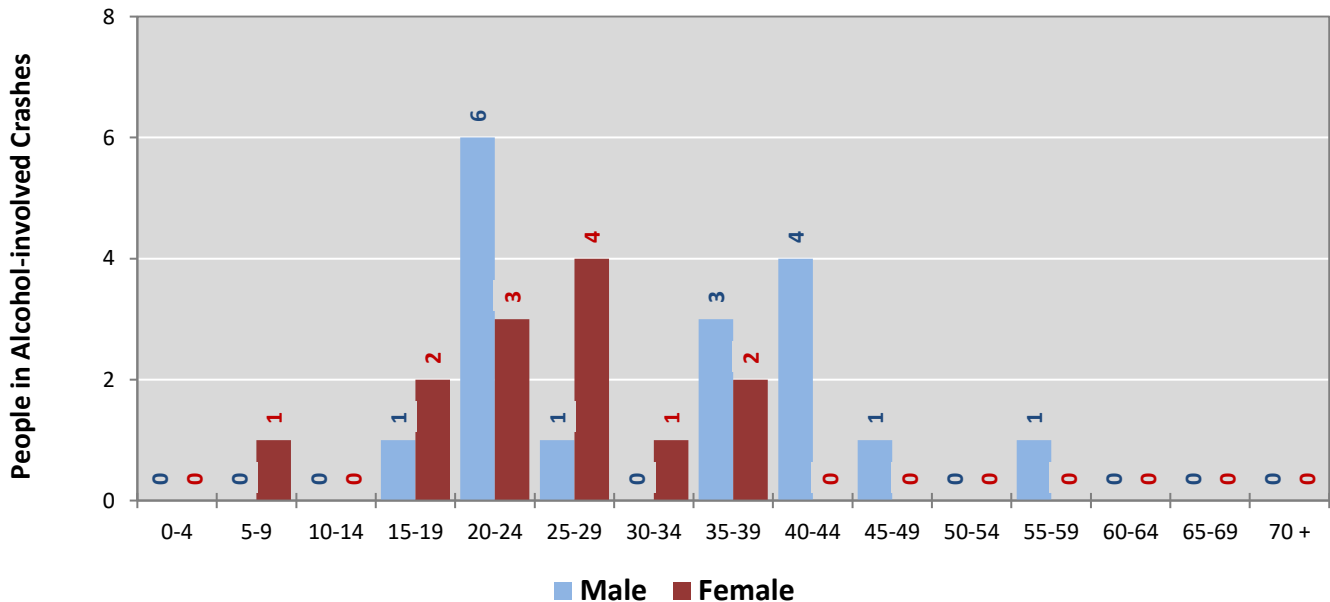


**Figure 9: People in Crashes by Age Group and Sex in Las Vegas, 2019**



\* In 2019, Las Vegas had 77 people in crashes for which age or sex data were missing.

**Figure 10: People in Alcohol-involved Crashes by Age Group and Sex in Las Vegas, 2019**



\* In 2019, Las Vegas had 6 people in alcohol-involved crashes for which age or sex data were missing.



**Table 18: Pedestrians and Pedalcyclists in Crashes  
by Age Group in Las Vegas, 2015-2019**

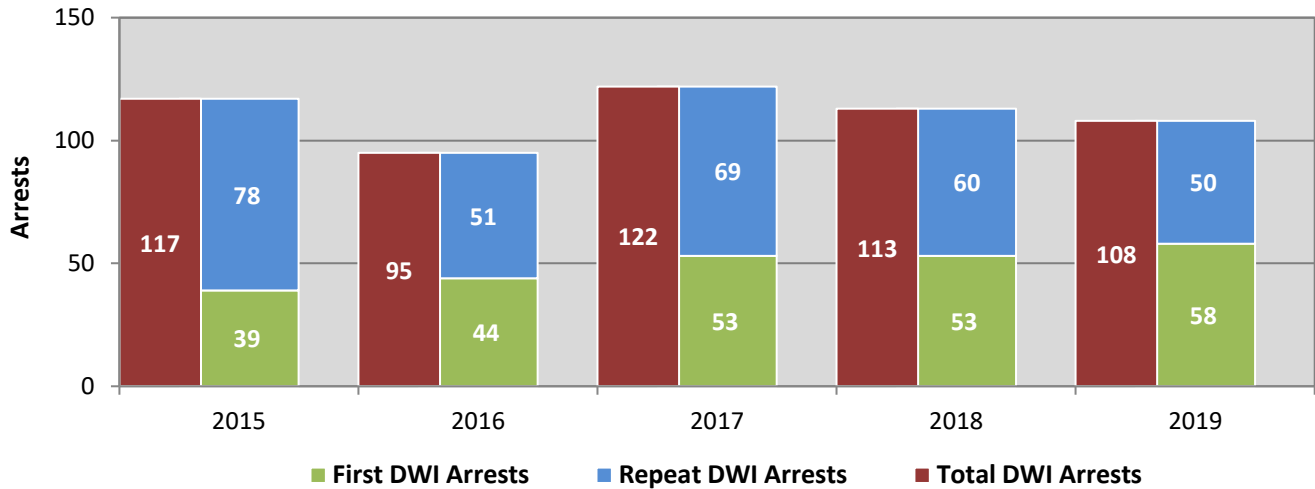
Age Groups	Pedestrians and Pedalcyclists <sup>1</sup> in Crashes					5-Year Total People
	2015	2016	2017	2018	2019	
0-4	0	0	0	0	0	0
5-9	1	1	0	0	0	2
10-14	0	1	0	0	0	1
15-19	0	1	1	1	0	3
20-24	0	1	0	0	0	1
25-29	0	1	2	1	1	5
30-34	1	0	0	0	0	1
35-39	0	0	1	0	1	2
40-44	0	0	0	0	0	0
45-49	0	0	0	3	0	3
50-54	1	0	0	0	0	1
55-59	1	1	0	0	0	2
60-64	0	1	1	0	0	2
65-69	0	0	1	0	0	1
70 +	0	1	1	1	0	3
Missing Data	0	0	0	0	2	2
<b>Total People</b>	<b>4</b>	<b>8</b>	<b>7</b>	<b>6</b>	<b>4</b>	<b>29</b>

**Table 19: Pedestrians and Pedalcyclists in Crashes by Alcohol Involvement  
and Severity of Injuries in Las Vegas, 2019**

Alcohol Involvement	Pedestrians and Pedalcyclists <sup>1</sup> in Crashes					Total People
	Fatalities (Class K)	Suspected Serious Injuries (Class A)	Suspected Minor Injuries (Class B)	Possible Injuries (Class C)	No Apparent Injury (Class O)	
<b>Total Pedalcyclists</b>	<b>0</b>	<b>0</b>	<b>1</b>	<b>1</b>	<b>0</b>	<b>2</b>
Involved	0	0	0	0	0	0
Not Involved	0	0	1	1	0	2
<b>Total Pedestrians</b>	<b>0</b>	<b>1</b>	<b>0</b>	<b>1</b>	<b>0</b>	<b>2</b>
Involved	0	0	0	1	0	1
Not Involved	0	1	0	0	0	1
<b>Total People</b>	<b>0</b>	<b>1</b>	<b>1</b>	<b>2</b>	<b>0</b>	<b>4</b>

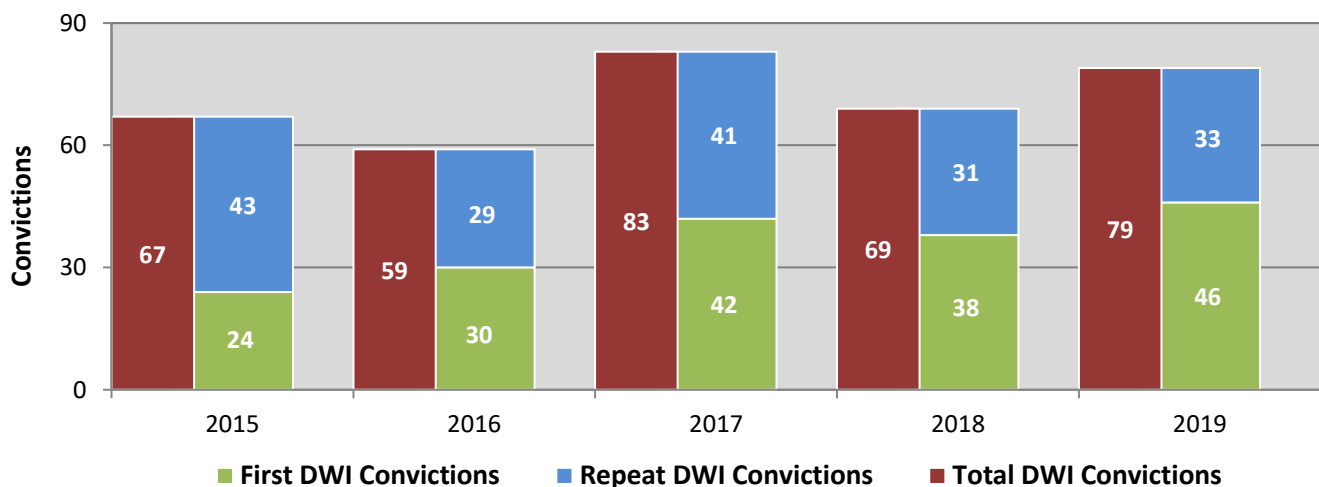
<sup>1</sup> Pedestrians and pedalcyclists are counted as non-motorized vehicles, when involved in a crash with a motor vehicle.

**Figure 11: DWI Arrests of Las Vegas Residents Throughout the State, Showing First and Repeat DWI Arrests, 2015-2019**



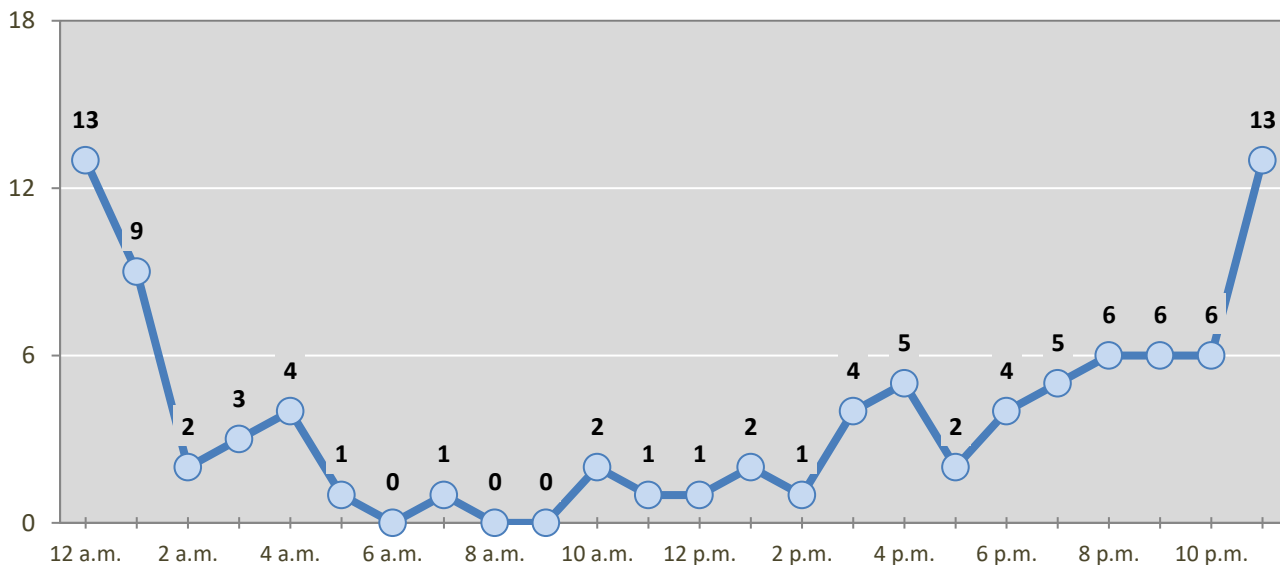
\*Values are based upon the year of the arrest.

**Figure 12: DWI Convictions of Las Vegas Residents Throughout the State, Showing First and Repeat DWI Convictions, 2015-2019**



\*Values are based upon the year of the conviction.

**Figure 13: DWI Arrests by Hour of Las Vegas Residents Throughout the State, 2019**



\* In 2019, Las Vegas had 17 arrests for which hour data were missing.

**Table 20: DWI Arrests by Day of Week of Las Vegas Residents Throughout the State, 2015-2019**

Day of Week	Year					5-Year Average
	2015	2016	2017	2018	2019	
Sunday	21	19	21	21	27	22
Monday	16	13	11	13	9	12
Tuesday	15	7	7	12	5	9
Wednesday	10	10	17	15	7	12
Thursday	10	11	13	11	18	13
Friday	20	12	29	21	18	20
Saturday	25	23	24	20	24	23
<b>Total Arrests</b>	<b>117</b>	<b>95</b>	<b>122</b>	<b>113</b>	<b>108</b>	<b>111</b>

**Table 21: Driver First DWI Arrests by Age Group  
of Las Vegas Residents Throughout the State, 2015-2019**

Age Groups	Driver First DWI Arrests <sup>1</sup>				
	2015	2016	2017	2018	2019
15-19	4	7	3	5	3
20-24	11	11	11	12	16
25-29	4	9	12	11	13
30-34	5	5	5	9	12
35-39	5	1	6	4	6
40-44	3	1	3	3	3
45-49	2	1	1	3	0
50-54	2	4	2	2	3
55-59	1	2	4	2	1
60-64	1	1	3	2	1
65-69	0	1	2	0	0
70 +	1	1	1	0	0
Missing Data	0	0	0	0	0
<b>Total Drivers</b>	<b>39</b>	<b>44</b>	<b>53</b>	<b>53</b>	<b>58</b>

<sup>1</sup>Values are based upon the year of the arrest.

**Table 22: Driver Repeat DWI Arrests by Age Group  
of Las Vegas Residents Throughout the State, 2015-2019**

Age Groups	Driver Repeat DWI Arrests <sup>1</sup>				
	2015	2016	2017	2018	2019
15-19	2	0	0	0	0
20-24	11	2	2	5	4
25-29	5	6	10	7	7
30-34	19	5	9	7	3
35-39	8	6	11	9	8
40-44	11	2	7	3	3
45-49	6	13	7	7	4
50-54	5	4	13	8	6
55-59	5	6	3	8	4
60-64	4	3	4	2	6
65-69	1	3	2	2	5
70 +	1	1	1	2	0
Missing Data	0	0	0	0	0
<b>Total Drivers</b>	<b>78</b>	<b>51</b>	<b>69</b>	<b>60</b>	<b>50</b>

<sup>1</sup>Values are based upon the year of the arrest.

**Table 23: Driver First DWI Convictions by Age Group  
of Las Vegas Residents Throughout the State, 2015-2019**

Age Groups	Driver First DWI Convictions <sup>1</sup>				
	2015	2016	2017	2018	2019
15-19	1	1	3	2	3
20-24	8	8	12	5	10
25-29	4	9	4	8	6
30-34	2	4	5	6	12
35-39	3	1	5	7	5
40-44	2	2	3	2	3
45-49	1	3	0	3	1
50-54	0	1	4	2	2
55-59	2	0	2	2	3
60-64	1	0	2	0	1
65-69	0	0	0	1	0
70 +	0	1	2	0	0
Missing Data	0	0	0	0	0
<b>Total Drivers</b>	<b>24</b>	<b>30</b>	<b>42</b>	<b>38</b>	<b>46</b>

<sup>1</sup>Values are based upon the year of the conviction.

**Table 24: Driver Repeat DWI Convictions by Age Group  
of Las Vegas Residents Throughout the State, 2015-2019**

Age Groups	Driver Repeat DWI Convictions <sup>1</sup>				
	2015	2016	2017	2018	2019
15-19	1	0	0	0	0
20-24	5	3	3	1	2
25-29	1	5	3	5	1
30-34	14	0	5	4	1
35-39	5	3	4	5	5
40-44	7	1	6	2	4
45-49	4	8	7	1	5
50-54	2	4	6	5	5
55-59	0	1	3	4	4
60-64	3	3	2	2	2
65-69	1	1	2	2	4
70 +	0	0	0	0	0
Missing Data	0	0	0	0	0
<b>Total Drivers</b>	<b>43</b>	<b>29</b>	<b>41</b>	<b>31</b>	<b>33</b>

<sup>1</sup>Values are based upon the year of the conviction.

**Table 25: Court Disposition of DWI Arrests for the State and of Las Vegas Residents Throughout the State, 2019**

Court Disposition of DWI Arrest <sup>1</sup>	Las Vegas	Statewide	Percent of Statewide
Total DWI Arrests	108	10,376	<b>1.0%</b>
DWI Arrests Resulting in Convictions	59	4,597	<b>1.3%</b>
DWI Arrests Resulting in Dismissals <sup>2</sup>	11	887	<b>1.2%</b>
DWI Arrests Awaiting Disposition	38	4,892	<b>0.8%</b>

<sup>1</sup> These are the number of DWI arrests in 2019 and whether the case resulted in a conviction or dismissal, or is still awaiting court disposition, as reported in the NM MVD Citation Tracking System (CTS) as of October 2020.

<sup>2</sup> For this table, a very small number of "not guilty" rulings may be included in the category Dismissals.

**Table 26: Average Number of Days from Date of DWI Arrest to Date of Court Disposition for the State and of Las Vegas Residents Throughout the State, 2019**

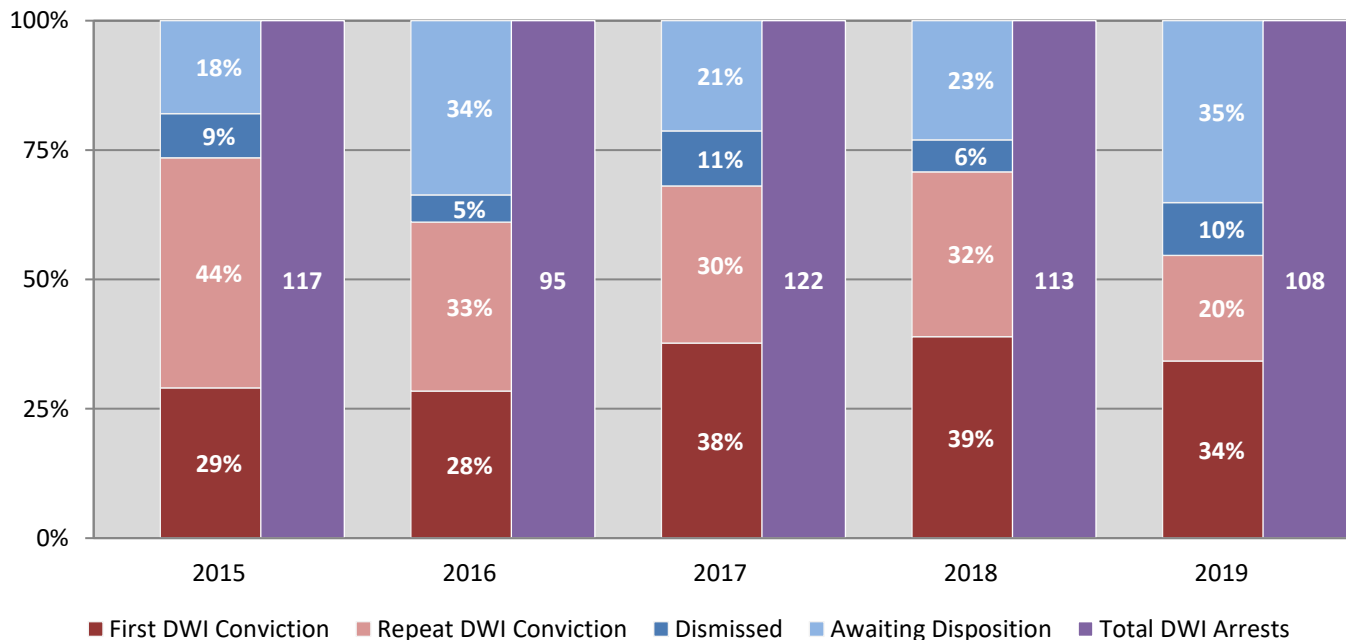
Court Disposition	Average Number of Days		Deviation from Statewide Average
	Las Vegas	Statewide	
DWI Conviction	140	159	<b>-19</b>
DWI Dismissal	176	160	<b>16</b>

**Table 27: Court Disposition of DWI Arrests  
of Las Vegas Residents Throughout the State, 2015-2019**

Year of DWI Arrest <sup>1</sup>	Court Disposition				Total DWI Arrests
	First DWI Conviction	Repeat DWI Conviction	Dismissed	Awaiting Disposition	
2015	34	52	10	21	117
2016	27	31	5	32	95
2017	46	37	13	26	122
2018	44	36	7	26	113
2019	37	22	11	38	108

<sup>1</sup> Values are based upon the year of the arrest.

**Figure 14: Court Dispositions by Percentage of DWI Arrests  
of Las Vegas Residents Throughout the State, 2015-2019**



\*Table 27 contains the values used to calculate percentages shown in Figure 14.