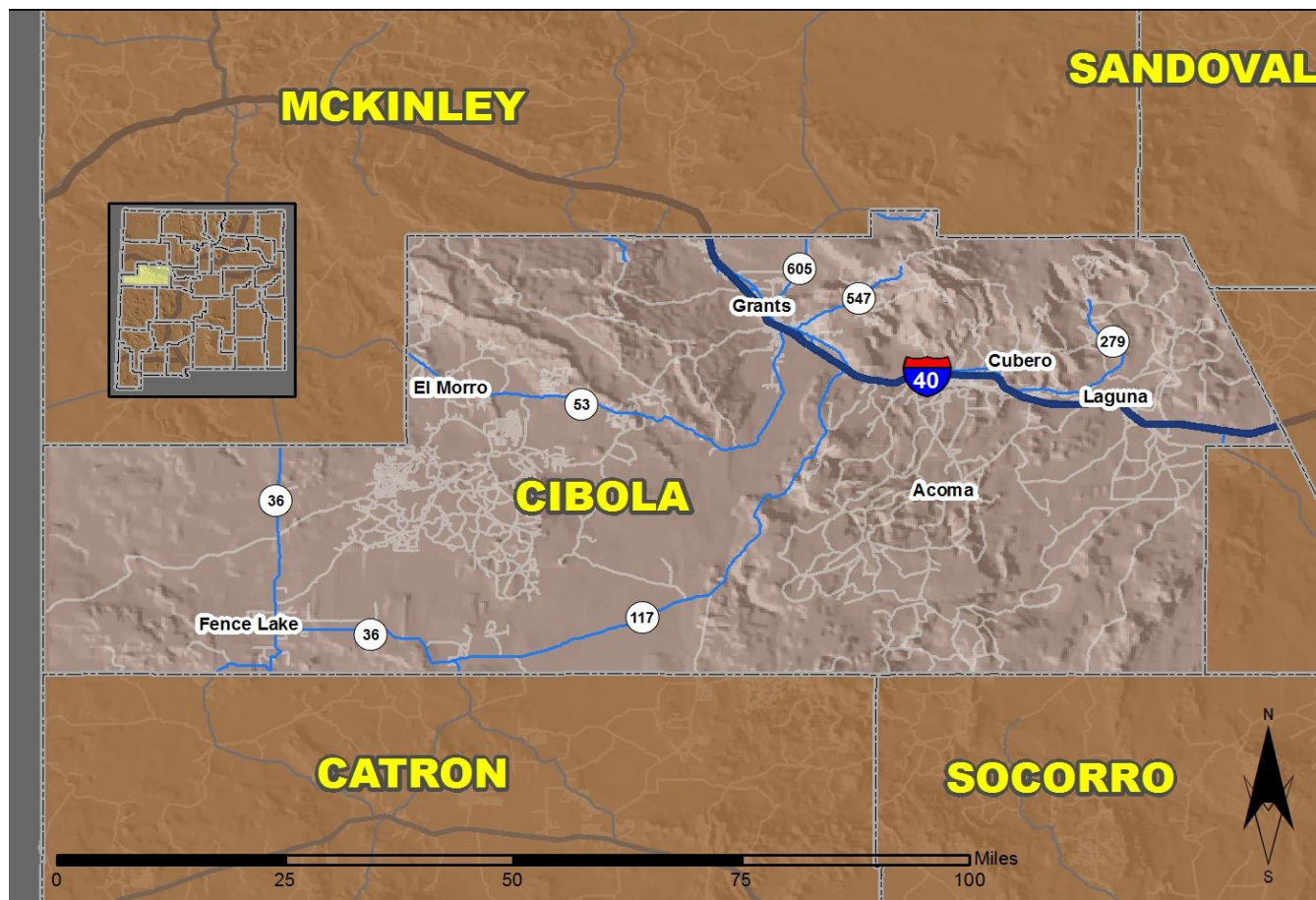


2019 Community Report

Cibola County



Produced for the New Mexico Department of Transportation,
Traffic Safety Division, Traffic Records Bureau,
Under Contract 6093 by the University of New Mexico,
Geospatial and Population Studies, Traffic Research Unit

Distributed in compliance with New Mexico Statute 66-7-214
as a reference source regarding New Mexico traffic crashes

For the purposes of this report, data are compiled by the University of New Mexico, Geospatial and Population Studies, Traffic Research Unit (TRU), on behalf of the New Mexico Department of Transportation (NMDOT). Data in this report may differ from that in other data sources, such as the Federal Fatality Analysis Reporting System (FARS), due to the timing of publications and rules for how data are compiled and maintained in Federal vs. State databases. If you have questions regarding this report, please contact the Traffic Safety Division at 505-827-0427.

<https://gps.unm.edu/tru/crash-reports/community-reports>

Definitions

Aggravated DWI – A driver arrested for 1) driving with a BAC of 0.16 or higher, 2) driving under the influence of alcohol or drugs and causing bodily injury to a human being as a result, or 3) driving under the influence of alcohol or drugs and refusing to submit to a BAC test at the time of arrest for DWI.

Alcohol-involved Crash – A crash for which the Uniform Crash Report indicated that 1) a DWI citation was issued, 2) alcohol was a contributing factor, or 3) a person in control of a vehicle (including a pedestrian or pedalcyclist) was suspected of being under the influence of alcohol.

Alcohol-involved Driver – A person in control of a vehicle who was cited for DWI or indicated on the Uniform Crash Report as being either suspected or determined by testing to be under the influence of alcohol. There can be multiple alcohol-involved drivers in a single alcohol-involved crash.

Crash – A reported incident on a public roadway involving one or more motor vehicles that resulted in death, personal injury, or at least \$500 in property damage. Crashes on private property (such as a parking lot) are not included.

DWI Arrest (Citation) – In this report, a DWI arrest (a.k.a. a DWI citation) is a driver arrested for either DWI or aggravated DWI. New Mexico’s legal limit for presumption of driving while intoxicated (DWI) is 0.08 for non-commercial drivers older than 21 years of age, 0.04 for commercial vehicle drivers, and 0.02 for drivers younger than 21 years of age.

DWI Conviction – A driver convicted of driving under the intoxicating influence of alcohol, narcotics, or pathogenic drugs, including aggravated DWI.

Fatal Crash – A crash in which at least one person was killed. More than one person can be killed in a single fatal crash.

Fatalities – The number of people killed in a crash. The terms “killed” and “deaths” are synonymous with “fatalities.” A fatality is crash-related if it occurs at the time of the crash or if the person(s) involved in the crash dies within 30 days.

Injury Crash – A reported crash in which at least one person was injured. Injury crashes involve at least one suspected serious injury (Class A), suspected minor injury (Class B), or possible injury (Class C). Fatal crashes are not included.

Missing Data – An indication that the applicable field on the UCR form was left blank or contained an invalid code. Starting with crashes that occurred in 2012, improvements in the identification of missing data in the NMDOT crash database led to an increase in the reported amount of missing data.

Pedalcyclist – A person riding a mechanism of transport that is powered solely by pedals (a.k.a. bicyclist).

Pedestrian – A person on foot, walking, running, jogging, hiking, sitting or lying down who is involved in a motor vehicle traffic crash.

Sources

Crash Data – New Mexico Department of Transportation, Traffic Safety Division, Traffic Records Bureau, Traffic Crash Database, as of the report date below. Crash data are compiled using NMDOT Uniform Crash Reports (UCR), submitted by law enforcement agencies in the state, for any incident on a public roadway involving one or more motor vehicles that resulted in death, injury, or at least \$500 in property damage. These reports are processed by the NMDOT Traffic Records Bureau and analyzed by the University of New Mexico, Geospatial and Population Studies, Traffic Research Unit (TRU).

DWI Citation Tracking System (CTS) – New Mexico Taxation and Revenue Department (NM TRD), Motor Vehicle Division (MVD), DWI Citation Tracking System (CTS), as of October 2020. Repeat offenders are identified by the combination of account key, arrest date, and citation number. County data are based upon the county where the arrest took place. City data are based upon the city where the offender resides.

Urban Areas – Areas defined by the New Mexico Department of Transportation, Asset Management and Planning, 2010 U.S. Census Urbanized Area Boundaries, NMDOT-Adjusted, and U.S. Census Urban Clusters, August 21, 2013. Urban areas for crash years 2013-2017 include a 1/2 mile buffer extending out from those urban boundaries. In crashes before 2013, “urban” was defined as a town or city with a population of at least 2,500 people.

**Table 1: Total Crashes and Alcohol-involved Crashes by
Crash Severity in Cibola County, 2010-2019**

Year	Total Crashes				Alcohol-involved Crashes			
	Fatal	Injury	Property Damage Only	Total	Fatal	Injury	Property Damage Only	Total
2010	8	127	285	420	2	13	11	26
2011	12	118	288	418	5	13	14	32
2012	8	118	298	424	1	20	19	40
2013	12	95	240	347	4	8	10	22
2014	7	97	246	350	1	10	14	25
2015	9	116	287	412	5	17	14	36
2016	14	132	364	510	4	21	20	45
2017	13	107	326	446	5	15	20	40
2018	5	107	318	430	1	16	14	31
2019	12	150	360	522	5	28	14	47

**Figure 1: Alcohol-involved Fatal and Injury Crashes Compared with
Non-alcohol-involved Fatal and Injury Crashes in Cibola County, 2010-2019**

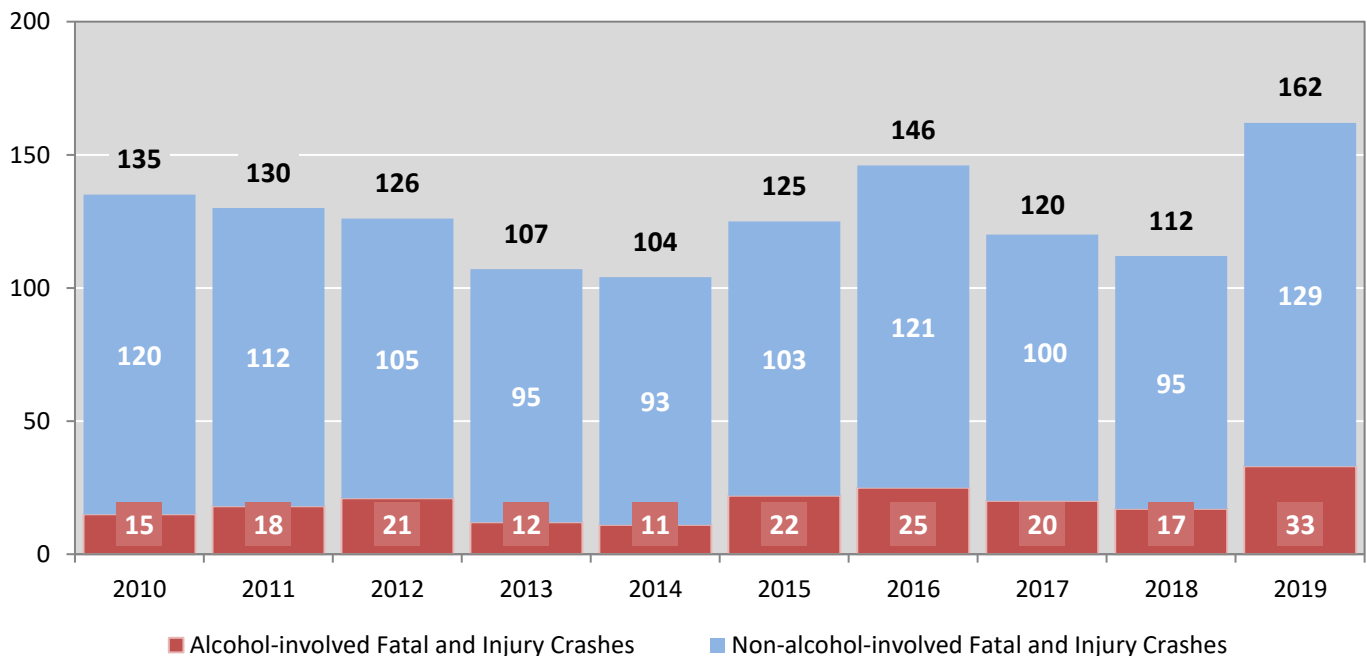


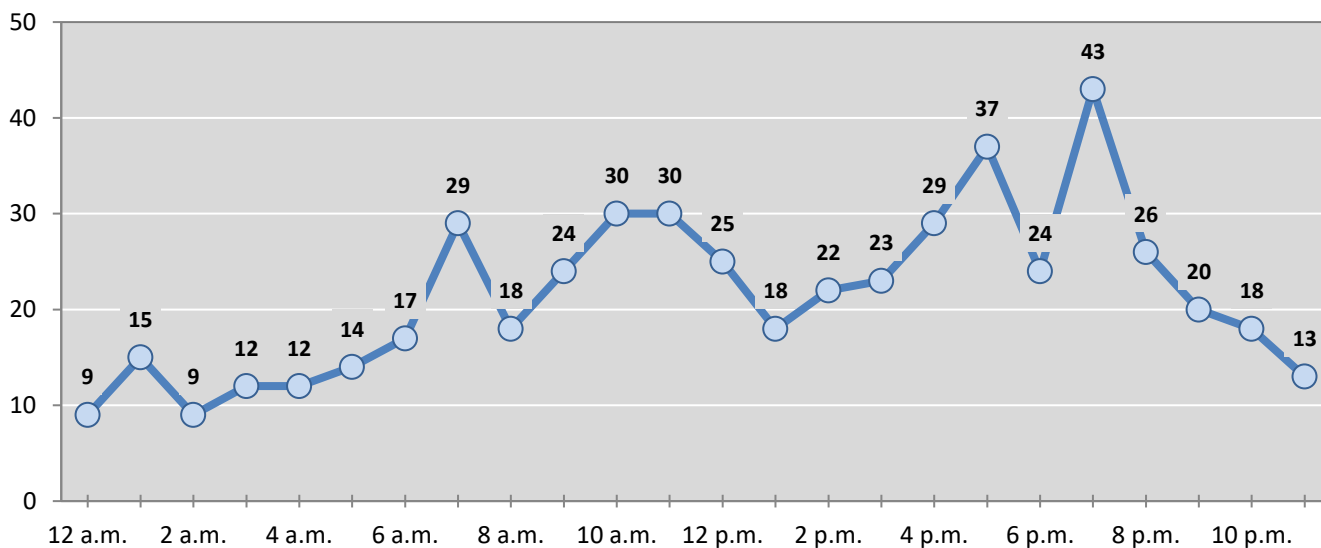
Table 2: Crashes by Month in Cibola County, 2015-2019

Month	Crashes					5-Year Average
	2015	2016	2017	2018	2019	
January	34	48	36	32	67	43
February	33	35	27	25	46	33
March	18	41	37	36	45	35
April	22	35	39	35	33	33
May	26	40	37	42	30	35
June	27	49	54	39	38	41
July	44	56	32	28	43	41
August	38	32	41	39	41	38
September	37	52	27	31	39	37
October	46	47	33	40	37	41
November	34	36	34	32	54	38
December	53	39	49	51	49	48
Total Crashes	412	510	446	430	522	464

Table 3: Alcohol-involved Crashes by Month in Cibola County, 2015-2019

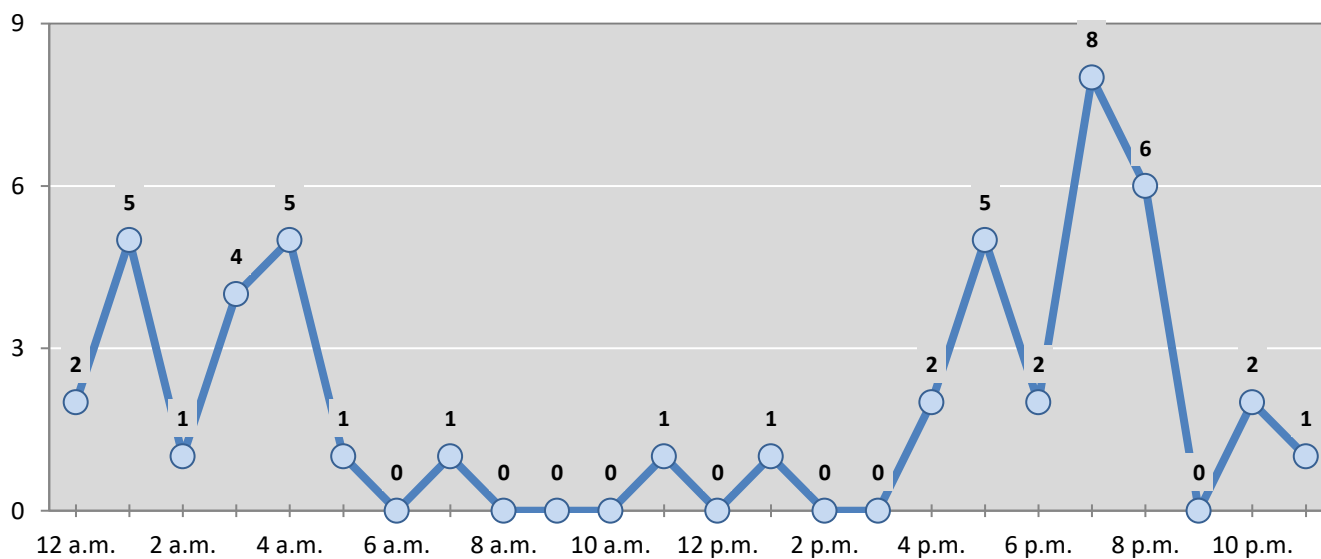
Month	Alcohol-involved Crashes					5-Year Average
	2015	2016	2017	2018	2019	
January	3	2	1	2	4	2
February	1	4	1	1	3	2
March	2	2	2	4	2	2
April	4	5	4	2	9	5
May	2	4	3	1	2	2
June	4	3	2	4	2	3
July	4	6	2	1	1	3
August	0	4	5	2	8	4
September	3	6	6	6	4	5
October	8	2	6	5	3	5
November	3	5	5	0	4	3
December	2	2	3	3	5	3
Total Crashes	36	45	40	31	47	40

Figure 2: Crashes by Hour in Cibola County, 2019



* In 2019, Cibola County had 5 crashes for which hour data were missing.

Figure 3: Alcohol-involved Crashes by Hour in Cibola County, 2019



* In 2019, Cibola County had 0 alcohol-involved crashes for which hour data were missing.

Table 4: Alcohol-involved Crashes by Day of Week in Cibola County, 2015-2019

Day of Week	Alcohol-involved Crashes					5-Year Average
	2015	2016	2017	2018	2019	
Sunday	5	7	4	9	9	7
Monday	4	2	3	3	7	4
Tuesday	3	7	7	1	8	5
Wednesday	5	4	4	6	7	5
Thursday	5	3	4	1	4	3
Friday	9	13	5	4	5	7
Saturday	5	9	13	7	7	8
Total Crashes	36	45	40	31	47	40

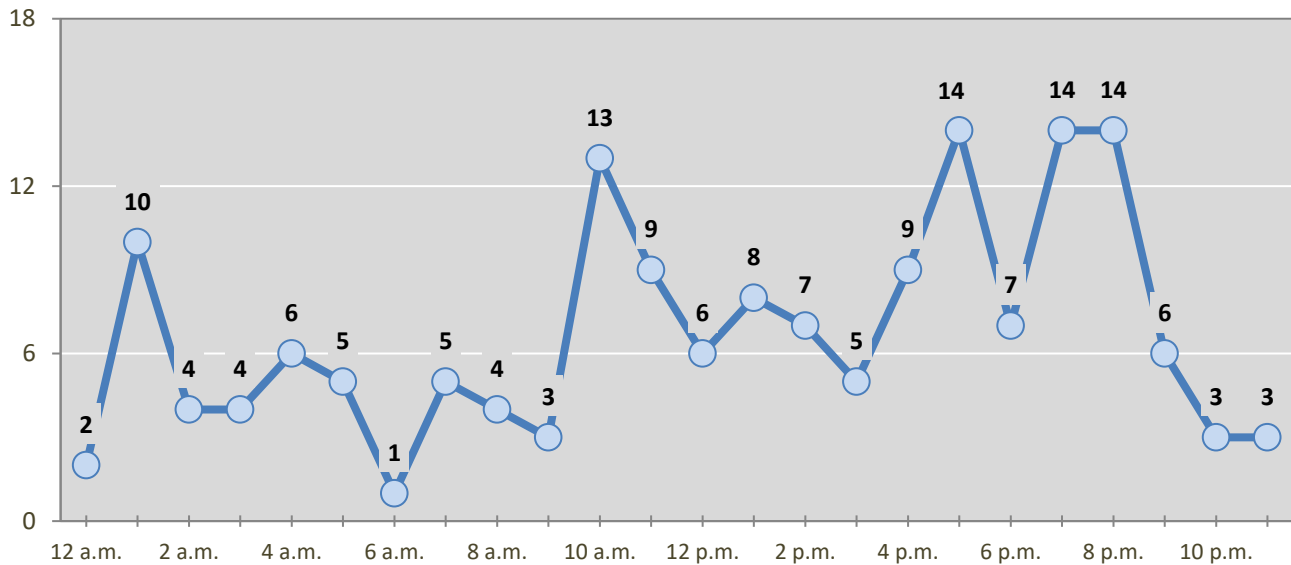
Table 5: Fatal and Injury Crashes by Day of Week in Cibola County, 2015-2019

Day of Week	Fatal and Injury Crashes					5-Year Average
	2015	2016	2017	2018	2019	
Sunday	11	27	22	17	27	21
Monday	10	13	14	20	17	15
Tuesday	18	17	15	12	25	17
Wednesday	18	24	16	13	28	20
Thursday	18	16	12	15	28	18
Friday	30	30	22	17	17	23
Saturday	20	19	19	18	20	19
Total Crashes	125	146	120	112	162	133

Table 6: Pedestrian and Pedalcyclist Crashes by Day of Week in Cibola County, 2015-2019

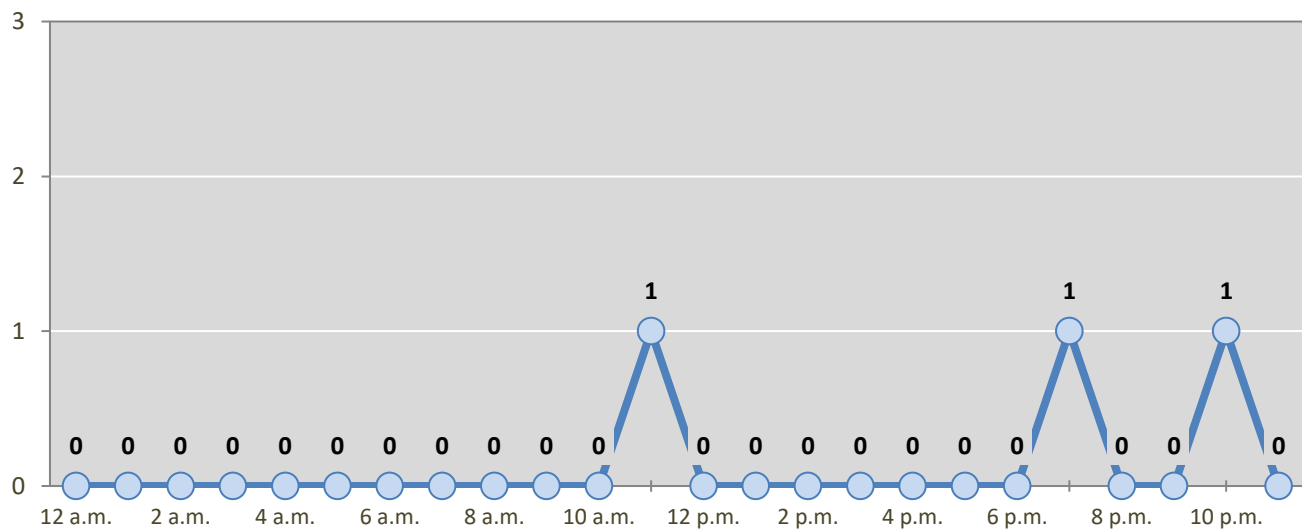
Day of Week	Pedestrian and Pedalcyclist Crashes					5-Year Average
	2015	2016	2017	2018	2019	
Sunday	0	1	0	0	0	0
Monday	0	0	0	1	0	0
Tuesday	1	1	1	1	0	1
Wednesday	0	4	0	0	3	1
Thursday	0	1	0	0	0	0
Friday	2	0	0	0	0	0
Saturday	1	0	1	0	0	0
Total Crashes	4	7	2	2	3	4

Figure 4: Fatal and Injury Crashes by Hour in Cibola County, 2019



* In 2019, Cibola County had 0 crashes for which hour data were missing.

Figure 5: Pedestrian and Pedalcyclist Crashes by Hour in Cibola County, 2019



* In 2019, Cibola County had 0 crashes for which hour data were missing.

Table 7: Severity of Injuries to People in Crashes by Rural and Urban Location in Cibola County, 2019

Urban and Rural Locations by Alcohol-involvement	People in Crashes by Severity of Injuries					Total People
	Fatalities (Class K)	Suspected Serious Injuries (Class A)	Suspected Minor Injuries (Class B)	Possible Injuries (Class C)	No Apparent Injuries (Class O)	
People in Alcohol-involved Crashes	5	5	20	16	51	97
Urban	1	0	3	4	17	25
Rural Non-Interstate	3	3	13	10	20	49
Rural Interstate	1	2	4	2	14	23
People in Crashes	16	19	94	130	909	1,168
Urban	1	2	13	24	294	334
Rural Non-Interstate	4	9	38	40	258	349
Rural Interstate	11	8	43	66	357	485
Percent in Alcohol-involved Crashes	31%	26%	21%	12%	6%	8%

Table 8: Total Crashes by Roadway System and Crash Severity in Cibola County, 2015-2019

Crash Severity by System	Crashes by Year					5-Year Average
	2015	2016	2017	2018	2019	
Total Rural Interstate	128	156	175	176	210	169
Fatal Crash	4	7	7	3	7	6
Injury Crash	39	46	44	45	63	47
Property Damage Only Crash	85	103	124	128	140	116
Total Rural Non-Interstate	99	191	129	153	180	150
Fatal Crash	4	5	5	2	4	4
Injury Crash	32	51	41	42	56	44
Property Damage Only Crash	63	135	83	109	120	102
Total Urban	185	163	142	101	132	145
Fatal Crash	1	2	1	0	1	1
Injury Crash	45	35	22	20	31	31
Property Damage Only Crash	139	126	119	81	100	113

Table 9: Total Crashes by Crash Classification in Cibola County, 2015-2019

Crash Classification	Total Crashes by Year					5-Year Average
	2015	2016	2017	2018	2019	
Animal	23	61	42	48	42	43
Fixed Object	72	100	89	62	96	84
Other (Non-Collision)	18	25	25	27	31	25
Other (Object)	22	14	25	24	26	22
Other Vehicle	183	202	192	201	230	202
Overturn/Rollover	23	54	48	40	68	47
Parked Vehicle	19	21	10	13	11	15
Pedalcyclist	1	2	0	2	0	1
Pedestrian	3	5	2	1	3	3
Railroad Train	0	0	0	1	0	0
Rollover	39	20	7	5	9	16
Vehicle on Other Road	3	3	4	4	5	4
Missing Data	6	3	2	2	1	3
Total Crashes	412	510	446	430	522	464

Table 10: Vehicles in Crashes by Vehicle Type in Cibola County, 2015-2019

Vehicle Type ¹	Vehicles in Crashes by Vehicle Type					5-Year Average
	2015	2016	2017	2018	2019	
Bus	1	2	1	1	0	1
Motorcycle/ATV	15	17	18	6	12	14
Passenger	238	301	275	277	338	286
Pedalcyclist	1	2	0	2	0	1
Pedestrian	3	5	2	1	3	3
Pickup	150	166	137	139	148	148
Semi	69	79	104	84	145	96
Van/SUV/4WD	101	147	112	109	130	120
Other Vehicle	19	2	1	8	3	7
Missing Data	45	52	23	31	19	34
Total Vehicles	642	773	673	658	798	709

¹ Pedestrians and pedalcyclists are counted as non-motorized vehicles, when involved in a crash with a motor vehicle. See Page 17 for data on drivers of non-motorized vehicles in crashes (i.e. pedestrians and pedalcyclists).

Table 11: Motor Vehicle Drivers in Crashes by Vehicle Type and Age Group in Cibola County, 2019

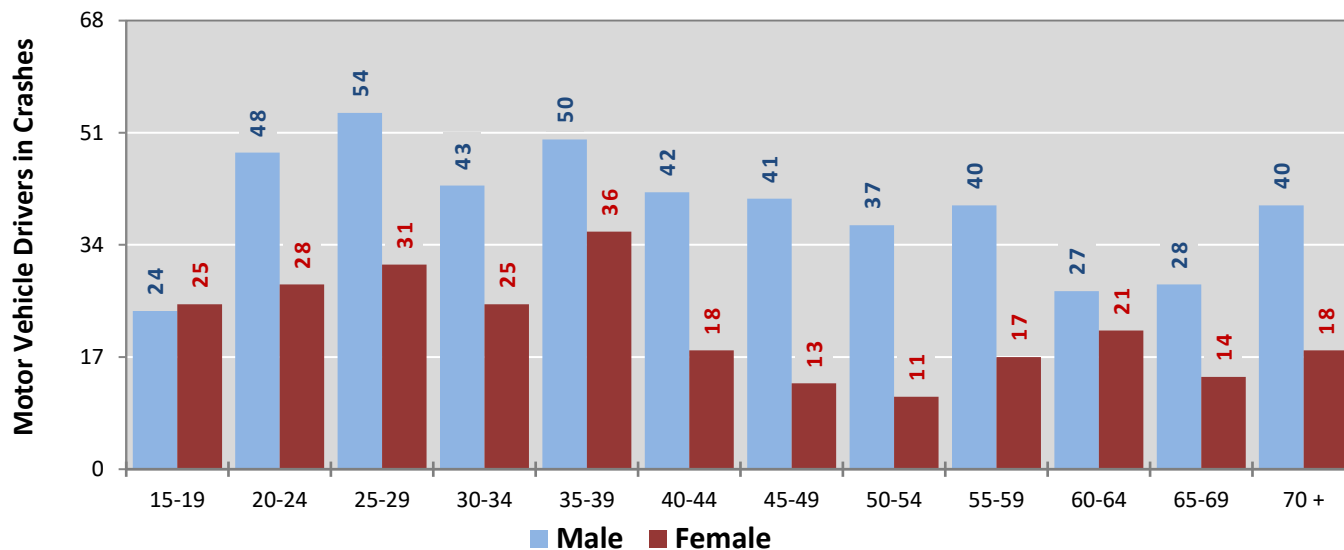
Age Groups	Motor Vehicle ¹ Drivers by Vehicle Type and Age Group								Total Drivers
	Bus	Motor-cycle	Passenger	Pickup	Semi	Van 4WD SUV	Other Vehicle	Missing Data	
15-19	0	1	34	9	0	5	0	0	49
20-24	0	3	47	10	9	7	0	0	76
25-29	0	0	39	14	13	18	0	1	85
30-34	0	1	26	13	12	16	0	0	68
35-39	0	1	39	13	23	10	0	0	86
40-44	0	0	20	12	15	13	0	0	60
45-49	0	2	18	13	18	2	0	1	54
50-54	0	2	16	11	16	3	0	0	48
55-59	0	1	15	15	17	8	1	0	57
60-64	0	0	20	6	8	12	1	1	48
65-69	0	0	17	8	4	12	1	0	42
70 +	0	1	26	14	2	15	0	0	58
Missing Data	0	0	21	10	8	9	0	16	64
Total Drivers	0	12	338	148	145	130	3	19	795

Table 12: Alcohol-involved Motor Vehicle Drivers in Crashes by Vehicle Type and Age Group in Cibola County, 2019

Age Groups	Alcohol-involved Motor Vehicle ¹ Drivers by Vehicle Type and Age Group								Total Drivers
	Bus	Motor-cycle	Passenger	Pickup	Semi	Van 4WD SUV	Other Vehicle	Missing Data	
15-19	0	0	0	0	0	0	0	0	0
20-24	0	0	12	2	0	3	0	0	17
25-29	0	0	6	0	0	2	0	0	8
30-34	0	0	5	1	0	2	0	0	8
35-39	0	0	3	1	0	0	0	0	4
40-44	0	0	2	0	0	0	0	0	2
45-49	0	0	1	0	0	0	0	0	1
50-54	0	1	2	1	0	0	0	0	4
55-59	0	0	0	0	0	1	0	0	1
60-64	0	0	0	0	0	0	0	0	0
65-69	0	0	0	0	0	0	0	0	0
70 +	0	0	0	0	0	0	0	0	0
Missing Data	0	0	0	0	0	0	0	0	0
Total Drivers	0	1	31	5	0	8	0	0	45

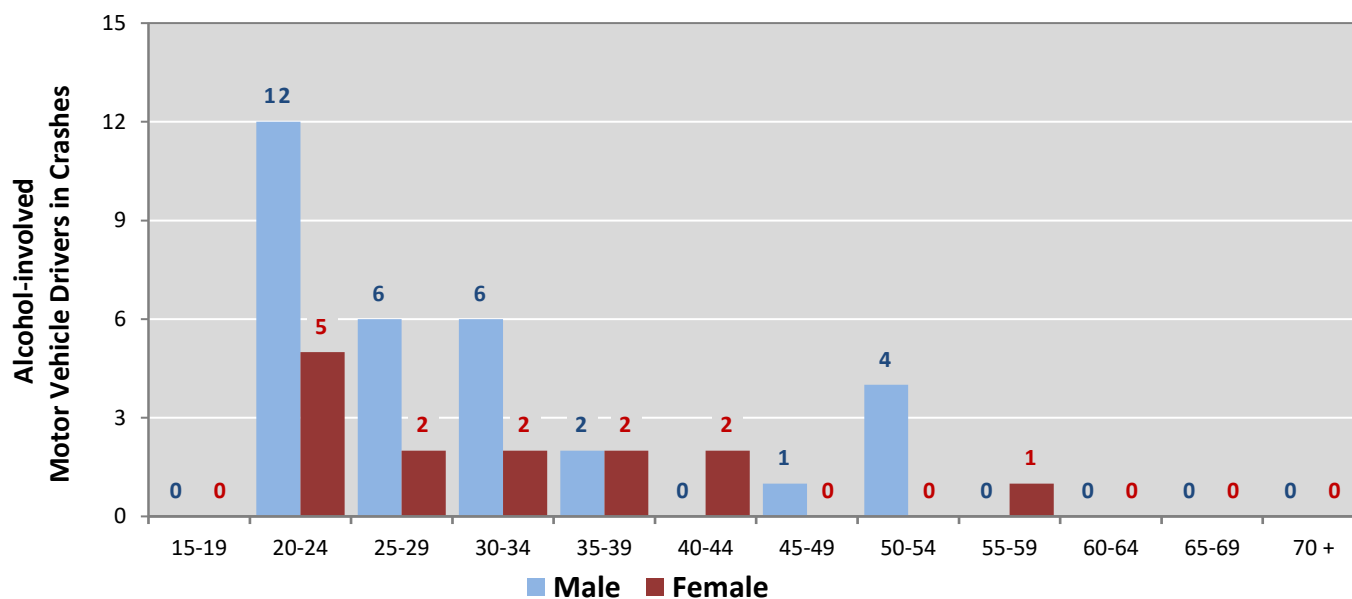
¹ See Page 17 for data on drivers of non-motorized vehicles in crashes (i.e. pedestrians and pedalcyclists).

Figure 6: Motor Vehicle Drivers in Crashes by Age Group and Sex in Cibola County, 2019



* In 2019, Cibola County had 64 drivers in crashes for which age or sex data were missing.

Figure 7: Alcohol-involved Motor Vehicle Drivers in Crashes by Age Group and Sex in Cibola County, 2019



* In 2019, Cibola County had 0 drivers in crashes for which age or sex data were missing.

Table 13: Alcohol-involved Motor Vehicle Drivers Under 21 (Ages 15-20) in Crashes in Cibola County, 2015-2019

Age ¹	Year					5-Year Total
	2015	2016	2017	2018	2019	
15	0	0	0	0	0	0
16	0	1	0	0	0	1
17	1	0	0	0	0	1
18	1	1	1	1	0	4
19	3	1	0	0	0	4
20	0	2	0	1	2	5
Total Drivers	5	5	1	2	2	15

Table 14: Motor Vehicle Drivers Under 21 (Ages 15-20) in Crashes by Age, Sex and Alcohol-involvement in Cibola County, 2019

Age ¹	Total Drivers				Alcohol-involved Drivers			
	Sex		Total Drivers	Percent of Total	Sex		Total Drivers	Percent of Total
	Male	Female			Male	Female		
15	3	0	3	5%	0	0	0	0%
16	7	5	12	20%	0	0	0	0%
17	5	6	11	19%	0	0	0	0%
18	4	6	10	17%	0	0	0	0%
19	5	8	13	22%	0	0	0	0%
20	6	4	10	17%	1	1	2	100%
Total Drivers	30	29	59	100%	1	1	2	100%

¹ For analysis of drivers under age 21, when the driver age or sex are not identified on the crash report (typically hit-and-run drivers), the driver data are considered unreliable and are excluded from the analysis.

**Table 15: Frequency of Contributing Factors in Crashes
by Crash Severity in Cibola County, 2019**

Contributing Factors	Frequency of Contributing Factor ¹ by Crash Severity			
	Frequency in Fatal Crashes	Frequency in Injury Crashes	Frequency in Property Damage Only Crashes	Frequency in All Crashes
Human	29	264	422	715
Driver Inattention	8	71	128	207
Speed Too Fast for Conditions	1	34	56	91
Excessive Speed	3	31	37	71
Other Improper Driving	2	20	28	50
Alcohol Involved	5	28	14	47
Failed to Yield Right of Way	0	11	27	38
Following Too Closely	2	10	17	29
Made Improper Turn	0	7	16	23
Avoid No Contact - Vehicle	1	5	16	22
Improper Lane Change	0	7	15	22
Drove Left Of Center	4	7	6	17
Improper Overtaking	0	9	8	17
Avoid No Contact - Other	0	1	15	16
Disregarded Traffic Signal	0	6	8	14
Vehicle Skidded Before Brake	0	5	8	13
Improper Backing	0	0	8	8
Passed Stop Sign	1	1	4	6
Failed to Yield to Police Vehicle	0	2	3	5
Drug Involved	1	4	0	5
Cell Phone	1	1	2	4
High Speed Pursuit	0	2	2	4
Driverless Moving Vehicle	0	0	3	3
Failed to Yield to Emergency Vehicle	0	1	1	2
Pedestrian Error	0	1	0	1
Texting	0	0	0	0
Vehicle	1	4	18	23
Other Mechanical Defect	1	0	8	9
Defective Tires	0	1	5	6
Defective Steering	0	2	2	4
Inadequate Brakes	0	1	3	4
Environment	0	0	7	7
Road Defect	0	0	7	7
Low Visibility Due to Smoke	0	0	0	0
Traffic Control Not Functioning	0	0	0	0
Other	11	86	238	335
Other - No Driver Error	8	42	141	191
None	3	44	97	144

¹ Multiple contributing factors may be reported for any vehicle in a crash.

Table 16: People in Crashes by Crash Classification and Severity of Injuries in Cibola County, 2019

Crash Classification	People in Crashes by Severity of Injuries					Total People
	Fatalities (Class K)	Suspected Serious Injuries (Class A)	Suspected Minor Injuries (Class B)	Possible Injuries (Class C)	No Apparent Injuries (Class O)	
Animal	0	0	1	4	62	67
Fixed Object	0	2	9	18	116	145
Other (Non-Collision)	0	0	3	3	35	41
Other (Object)	0	0	1	2	46	49
Other Vehicle	11	6	37	60	554	668
Overturn/Rollover	1	5	33	33	59	131
Parked Vehicle	0	0	3	2	20	25
Pedalcyclist	0	0	0	0	0	0
Pedestrian	1	0	2	4	2	9
Railroad Train	0	0	0	0	0	0
Rollover	1	2	4	0	5	12
Vehicle on Other Road	2	4	1	3	8	18
Missing Data	0	0	0	1	2	3
Total People	16	19	94	130	909	1,168

**Table 17: Killed or Injured Unbelted People in Crashes
by Sex and Age Group in Cibola County, 2019**

Age Groups	Unbelted People Killed or Injured ^{1,2}				Total People
	Male	Percent of Male	Female	Percent of Female	
0-4	0	0%	1	8%	1
5-9	1	8%	3	25%	4
10-14	0	0%	0	0%	0
15-19	0	0%	2	17%	2
20-24	2	17%	0	0%	2
25-29	3	25%	1	8%	4
30-34	2	17%	1	8%	3
35-39	0	0%	2	17%	2
40-44	2	17%	1	8%	3
45-49	0	0%	0	0%	0
50-54	0	0%	0	0%	0
55-59	0	0%	0	0%	0
60-64	0	0%	1	8%	1
65-69	1	8%	0	0%	1
70 +	1	8%	0	0%	1
Missing Data	0	0%	0	0%	0
Total People	12	100%	12	100%	24

¹ People injured are in one of three categories: suspected serious injury, suspected minor injury, or possible injury.

² Excludes people in or on buses, heavy trucks, motorcycles, or ATVs.

Figure 8: Seatbelt Use by People in Crashes with Fatal or Suspected Serious Injuries in Cibola County, 2015-2019

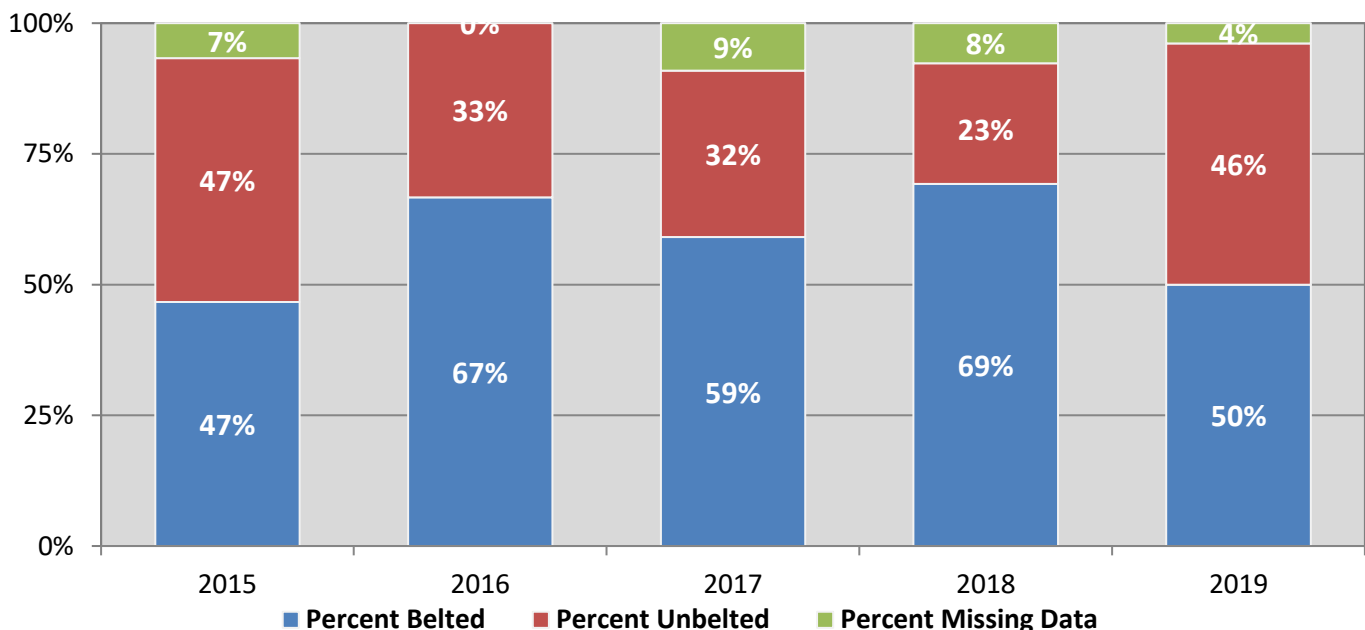
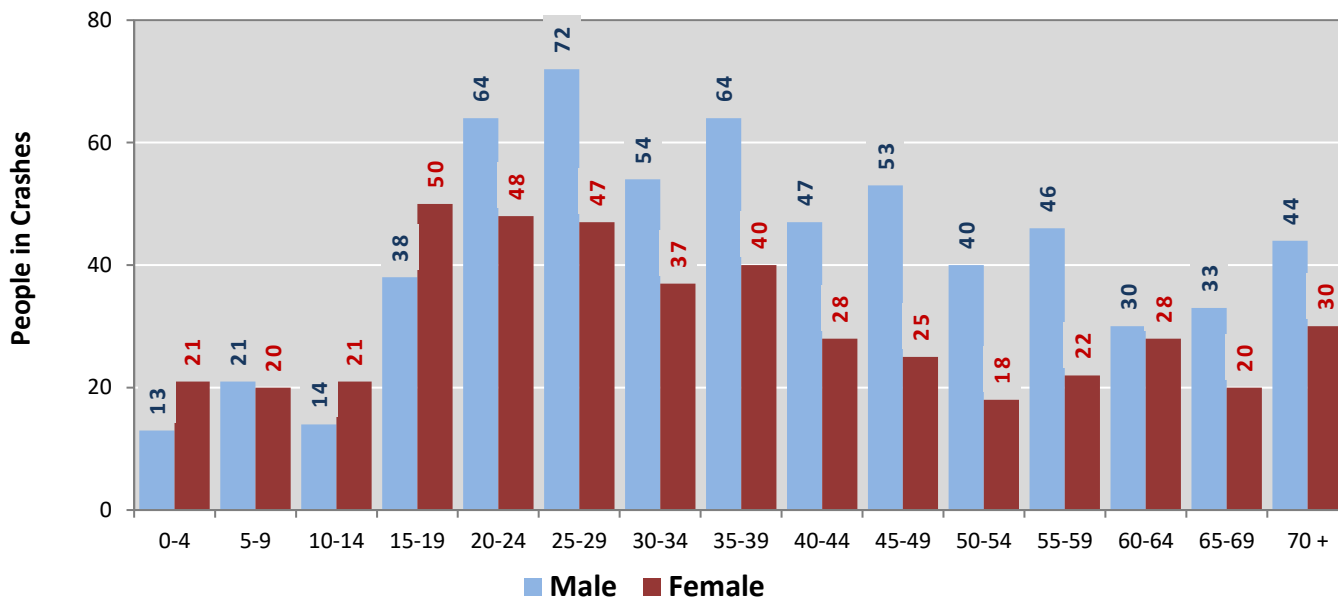
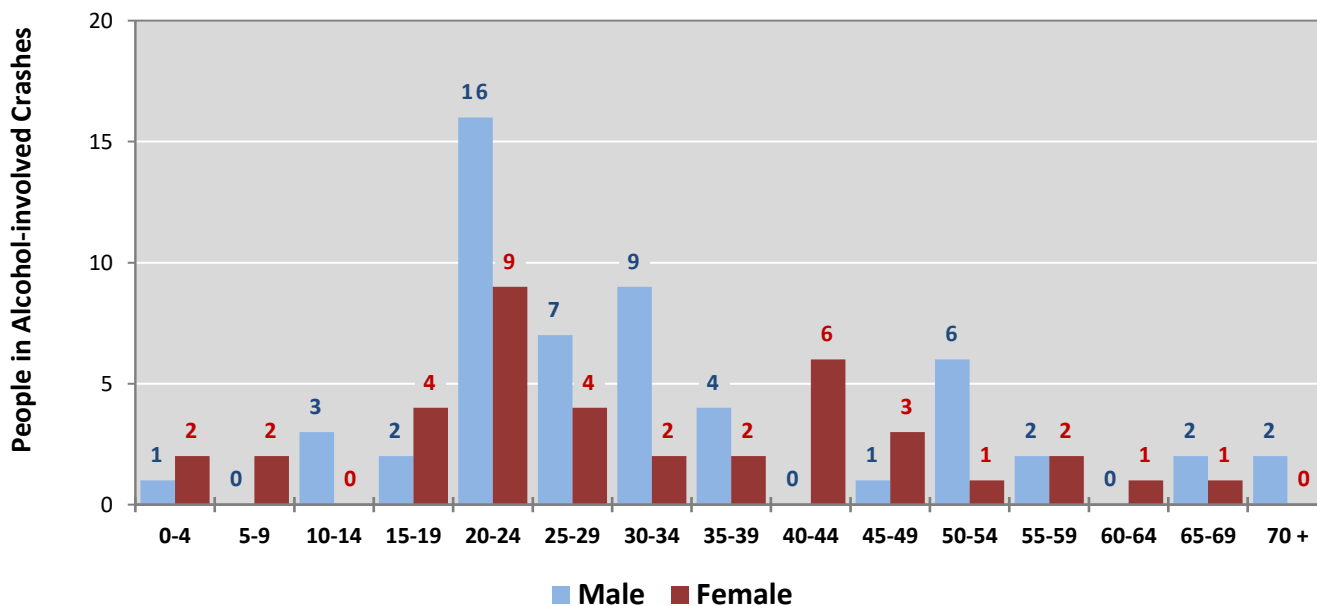


Figure 9: People in Crashes by Age Group and Sex in Cibola County, 2019



* In 2019, Cibola County had 80 people in crashes for which age or sex data were missing.

Figure 10: People in Alcohol-involved Crashes by Age Group and Sex in Cibola County, 2019



* In 2019, Cibola County had 3 people in alcohol-involved crashes for which age or sex data were missing.

**Table 18: Pedestrians and Pedalcyclists in Crashes by Age Group in
Cibola County, 2015-2019**

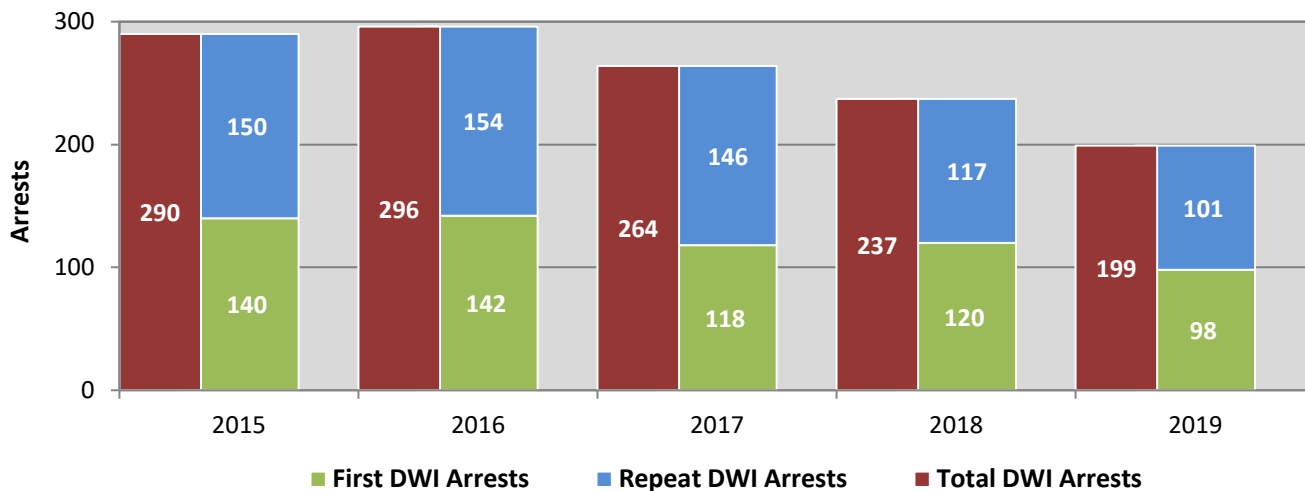
Age Groups	Pedestrians and Pedalcyclists ¹ in Crashes					5-Year Total People
	2015	2016	2017	2018	2019	
0-4	0	0	0	0	0	0
5-9	0	0	0	0	0	0
10-14	0	2	0	2	0	4
15-19	0	0	0	0	1	1
20-24	0	0	0	0	1	1
25-29	1	1	0	0	0	2
30-34	0	1	1	0	0	2
35-39	0	1	0	0	0	1
40-44	0	0	0	0	0	0
45-49	0	0	0	0	1	1
50-54	0	2	0	1	0	3
55-59	1	0	0	0	0	1
60-64	1	0	0	0	0	1
65-69	1	0	0	0	0	1
70 +	0	0	0	0	0	0
Missing Data	0	0	1	0	0	1
Total People	4	7	2	3	3	19

**Table 19: Pedestrians and Pedalcyclists in Crashes by Alcohol Involvement
and Severity of Injuries in Cibola County, 2019**

Alcohol Involvement	Pedestrians and Pedalcyclists ¹ in Crashes					Total People
	Fatalities (Class K)	Suspected Serious Injuries (Class A)	Suspected Minor Injuries (Class B)	Possible Injuries (Class C)	No Apparent Injury (Class O)	
Total Pedalcyclists	0	0	0	0	0	0
Involved	0	0	0	0	0	0
Not Involved	0	0	0	0	0	0
Total Pedestrians	1	0	1	1	0	3
Involved	1	0	1	0	0	2
Not Involved	0	0	0	1	0	1
Total People	1	0	1	1	0	3

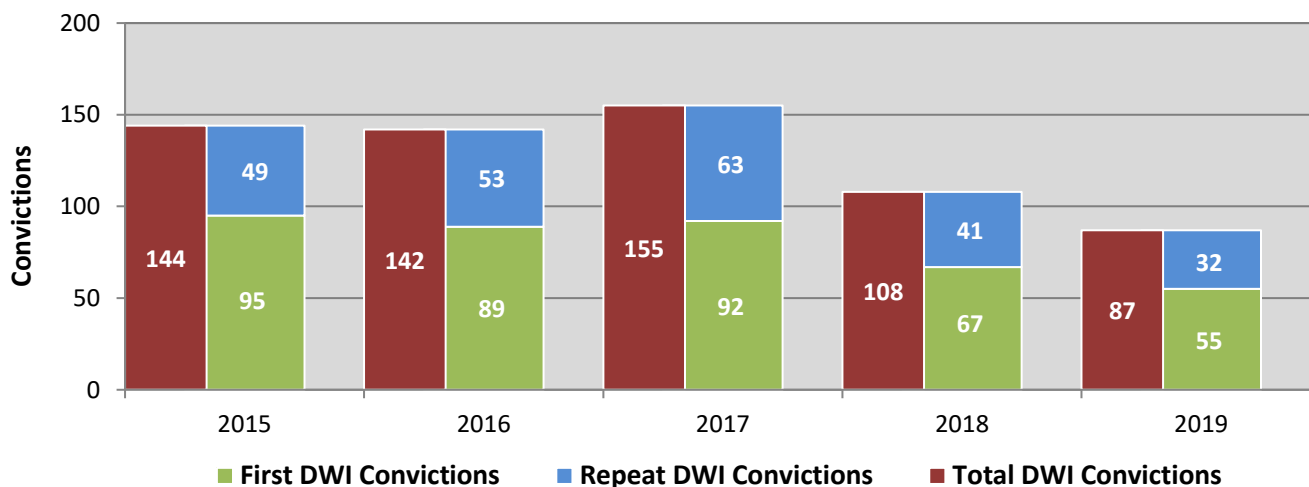
¹ Pedestrians and pedalcyclists are counted as non-motorized vehicles, when involved in a crash with a motor vehicle.

**Figure 11: DWI Arrests in Cibola County,
Showing First and Repeat DWI Arrests, 2015-2019**



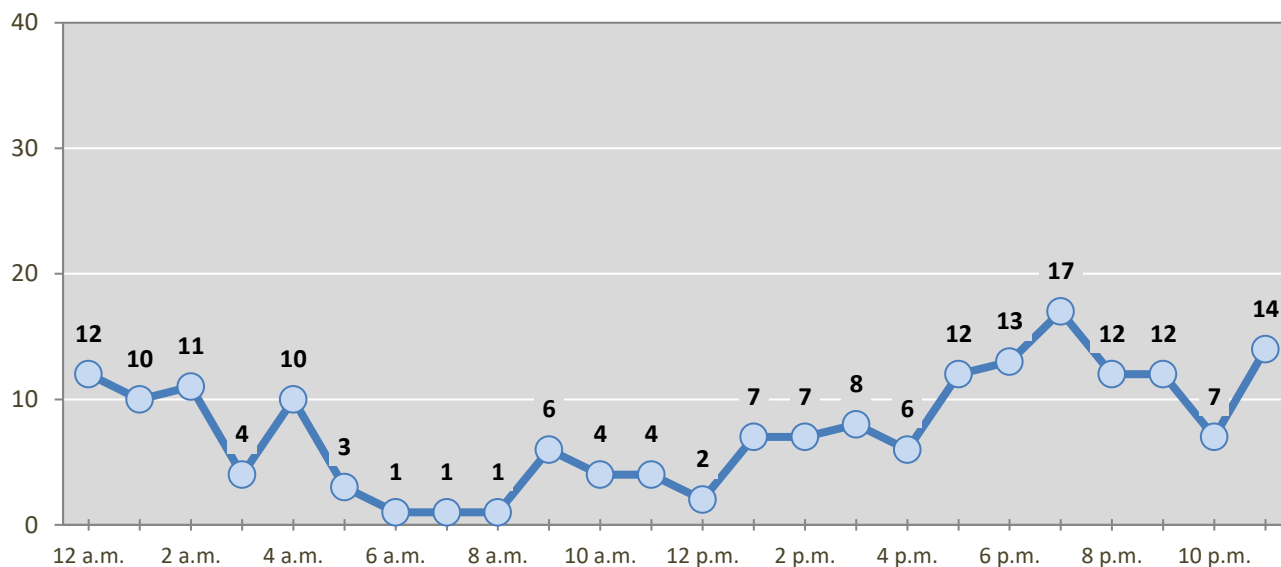
*Values are based upon the year of the arrest.

**Figure 12: DWI Convictions in Cibola County,
Showing First and Repeat DWI Convictions, 2015-2019**



*Values are based upon the year of the conviction.

Figure 13: DWI Arrests by Hour in Cibola County, 2019



* In 2019, Cibola County had 15 arrests for which hour data were missing.

Table 20: DWI Arrests by Day of Week in Cibola County, 2015-2019

Day of Week	Year					5-Year Average
	2015	2016	2017	2018	2019	
Sunday	52	46	37	35	24	39
Monday	28	30	38	23	31	30
Tuesday	20	30	32	29	24	27
Wednesday	29	40	37	28	15	30
Thursday	38	42	21	26	21	30
Friday	52	44	33	39	35	41
Saturday	71	64	66	57	49	61
Total Arrests	290	296	264	237	199	257

Table 21: Driver First DWI Arrests by Age Group in Cibola County, 2015-2019

Age Groups	Driver First DWI Arrests ¹				
	2015	2016	2017	2018	2019
15-19	13	4	3	4	5
20-24	33	34	27	18	16
25-29	25	32	36	33	26
30-34	18	20	14	17	13
35-39	14	17	16	9	16
40-44	13	11	7	14	9
45-49	10	5	4	10	4
50-54	8	15	2	4	4
55-59	2	3	3	8	2
60-64	1	0	2	2	0
65-69	3	1	3	1	2
70 +	0	0	1	0	1
Missing Data	0	0	0	0	0
Total Drivers	140	142	118	120	98

¹ Values are based upon the year of the arrest.

Table 22: Driver Repeat DWI Arrests by Age Group in Cibola County, 2015-2019

Age Groups	Driver Repeat DWI Arrests ¹				
	2015	2016	2017	2018	2019
15-19	2	0	0	0	0
20-24	9	16	4	6	8
25-29	28	20	28	16	17
30-34	21	22	30	31	25
35-39	29	27	24	18	13
40-44	13	22	18	17	11
45-49	16	16	14	8	10
50-54	21	16	15	8	6
55-59	6	6	8	2	4
60-64	4	6	4	8	3
65-69	1	3	1	1	4
70 +	0	0	0	2	0
Missing Data	0	0	0	0	0
Total Drivers	150	154	146	117	101

¹ Values are based upon the year of the arrest.

Table 23: Driver First DWI Convictions by Age Group in Cibola County, 2015-2019

Age Groups	Driver First DWI Convictions ¹				
	2015	2016	2017	2018	2019
15-19	7	5	1	1	4
20-24	28	28	19	14	10
25-29	21	17	25	16	17
30-34	13	10	14	12	5
35-39	7	9	13	7	4
40-44	4	7	6	5	8
45-49	7	3	5	5	4
50-54	5	8	7	1	1
55-59	3	0	1	2	2
60-64	0	1	0	1	0
65-69	0	1	1	3	0
70 +	0	0	0	0	0
Missing Data	0	0	0	0	0
Total Drivers	95	89	92	67	55

¹ Values are based upon the year of the conviction.

Table 24: Driver Repeat DWI Convictions by Age Group in Cibola County, 2015-2019

Age Groups	Driver Repeat DWI Convictions ¹				
	2015	2016	2017	2018	2019
15-19	1	0	0	0	0
20-24	1	2	5	2	1
25-29	6	7	13	11	5
30-34	6	5	8	8	5
35-39	12	13	8	5	7
40-44	5	7	9	7	5
45-49	6	6	9	1	5
50-54	5	8	7	5	3
55-59	4	2	2	1	0
60-64	1	3	1	1	1
65-69	2	0	1	0	0
70 +	0	0	0	0	0
Missing Data	0	0	0	0	0
Total Drivers	49	53	63	41	32

¹ Values are based upon the year of the conviction.

Table 25: Court Disposition of DWI Arrests for Cibola County and the State, 2019

Court Disposition of DWI Arrest¹	Cibola County	Statewide	Percent of Statewide
Total DWI Arrests	199	10,376	1.9%
DWI Arrests Resulting in Convictions	53	4,597	1.2%
DWI Arrests Resulting in Dismissals ²	3	887	0.3%
DWI Arrests Awaiting Disposition	143	4,892	2.9%

¹ These are the number of DWI arrests in 2019 and whether the case resulted in a conviction or dismissal, or is still awaiting court disposition, as reported in the NM MVD Citation Tracking System (CTS) as of October 2020.

² For this table, a very small number of "not guilty" rulings may be included in the category Dismissals.

Table 26: Average Number of Days from Date of DWI Arrest to Date of Court Disposition in Cibola County and the State, 2019

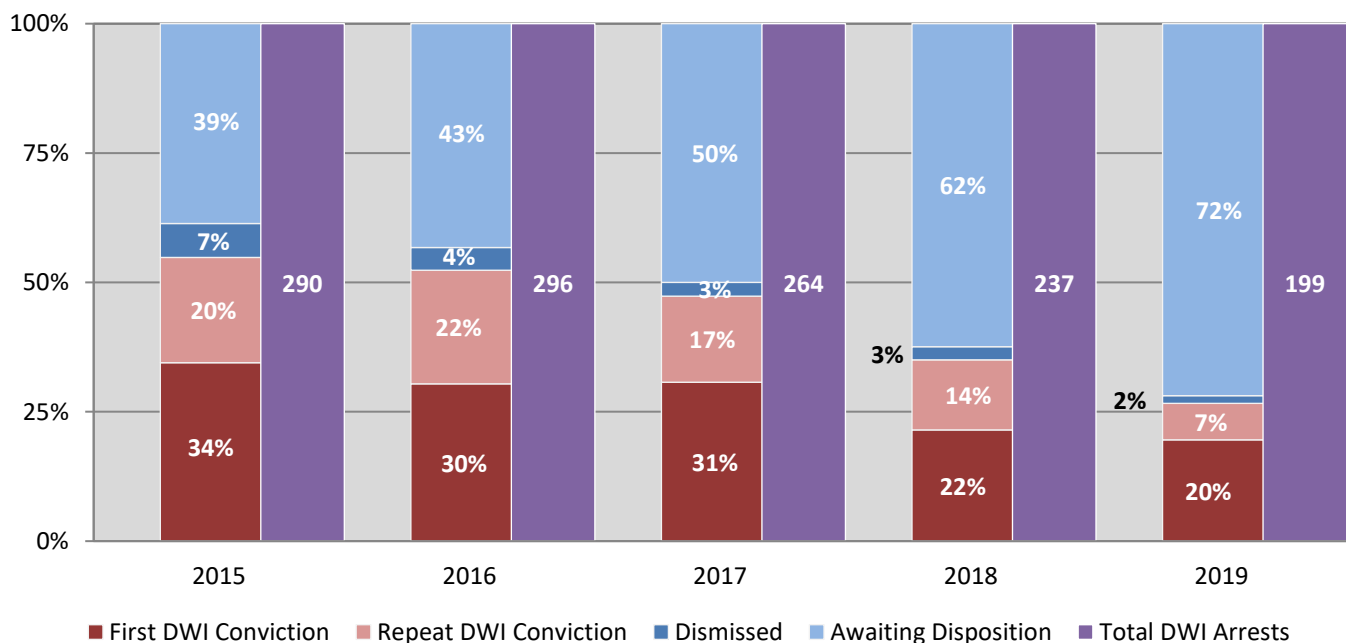
Court Disposition	Average Number of Days		Deviation from Statewide Average
	Cibola County	Statewide	
DWI Conviction	205	159	46
DWI Dismissal	213	160	53

Table 27: Court Disposition of DWI Arrests in Cibola County, 2015-2019

Year of DWI Arrest ¹	Court Disposition				Total DWI Arrests
	First DWI Conviction	Repeat DWI Conviction	Dismissed	Awaiting Disposition	
2015	100	59	19	112	290
2016	90	65	13	128	296
2017	81	44	7	132	264
2018	51	32	6	148	237
2019	39	14	3	143	199

¹ Values are based upon the year of the arrest.

Figure 14: Court Dispositions by Percentage of DWI Arrests in Cibola County, 2015-2019



*Table 27 contains the values used to calculate percentages shown in Figure 14.