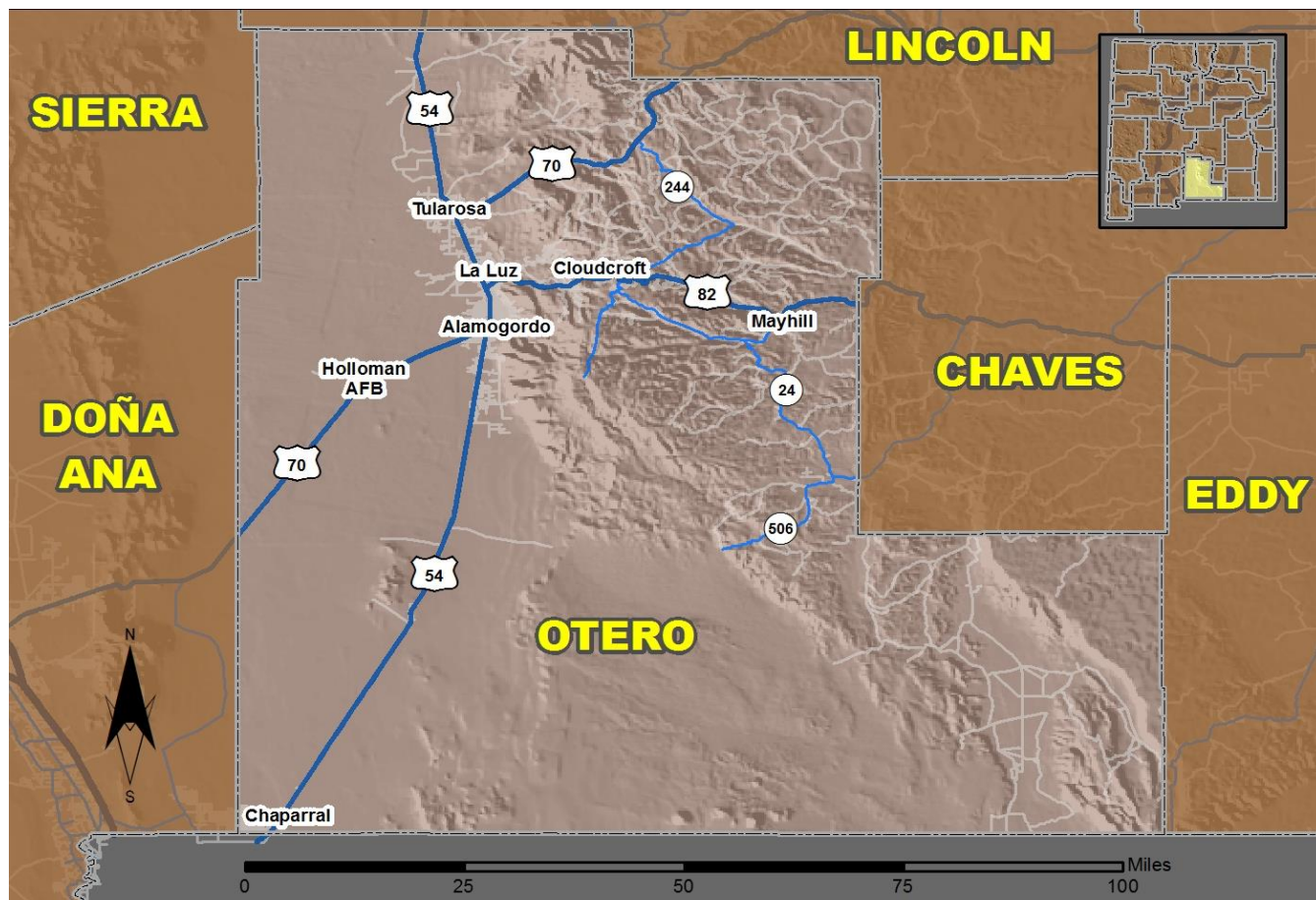


2019 Community Report

Otero County



Produced for the New Mexico Department of Transportation,
Traffic Safety Division, Traffic Records Bureau,
Under Contract 6093 by the University of New Mexico,
Geospatial and Population Studies, Traffic Research Unit

Distributed in compliance with New Mexico Statute 66-7-214
as a reference source regarding New Mexico traffic crashes

For the purposes of this report, data are compiled by the University of New Mexico, Geospatial and Population Studies, Traffic Research Unit (TRU), on behalf of the New Mexico Department of Transportation (NMDOT). Data in this report may differ from that in other data sources, such as the Federal Fatality Analysis Reporting System (FARS), due to the timing of publications and rules for how data are compiled and maintained in Federal vs. State databases. If you have questions regarding this report, please contact the Traffic Safety Division at 505-827-0427.

<https://gps.unm.edu/tru/crash-reports/community-reports>

Definitions

Aggravated DWI – A driver arrested for 1) driving with a BAC of 0.16 or higher, 2) driving under the influence of alcohol or drugs and causing bodily injury to a human being as a result, or 3) driving under the influence of alcohol or drugs and refusing to submit to a BAC test at the time of arrest for DWI.

Alcohol-involved Crash – A crash for which the Uniform Crash Report indicated that 1) a DWI citation was issued, 2) alcohol was a contributing factor, or 3) a person in control of a vehicle (including a pedestrian or pedalcyclist) was suspected of being under the influence of alcohol.

Alcohol-involved Driver – A person in control of a vehicle who was cited for DWI or indicated on the Uniform Crash Report as being either suspected or determined by testing to be under the influence of alcohol. There can be multiple alcohol-involved drivers in a single alcohol-involved crash.

Crash – A reported incident on a public roadway involving one or more motor vehicles that resulted in death, personal injury, or at least \$500 in property damage. Crashes on private property (such as a parking lot) are not included.

DWI Arrest (Citation) – In this report, a DWI arrest (a.k.a. a DWI citation) is a driver arrested for either DWI or aggravated DWI. New Mexico’s legal limit for presumption of driving while intoxicated (DWI) is 0.08 for non-commercial drivers older than 21 years of age, 0.04 for commercial vehicle drivers, and 0.02 for drivers younger than 21 years of age.

DWI Conviction – A driver convicted of driving under the intoxicating influence of alcohol, narcotics, or pathogenic drugs, including aggravated DWI.

Fatal Crash – A crash in which at least one person was killed. More than one person can be killed in a single fatal crash.

Fatalities – The number of people killed in a crash. The terms “killed” and “deaths” are synonymous with “fatalities.” A fatality is crash-related if it occurs at the time of the crash or if the person(s) involved in the crash dies within 30 days.

Injury Crash – A reported crash in which at least one person was injured. Injury crashes involve at least one suspected serious injury (Class A), suspected minor injury (Class B), or possible injury (Class C). Fatal crashes are not included.

Missing Data – An indication that the applicable field on the UCR form was left blank or contained an invalid code. Starting with crashes that occurred in 2012, improvements in the identification of missing data in the NMDOT crash database led to an increase in the reported amount of missing data.

Pedalcyclist – A person riding a mechanism of transport that is powered solely by pedals (a.k.a. bicyclist).

Pedestrian – A person on foot, walking, running, jogging, hiking, sitting or lying down who is involved in a motor vehicle traffic crash.

Sources

Crash Data – New Mexico Department of Transportation, Traffic Safety Division, Traffic Records Bureau, Traffic Crash Database, as of the report date below. Crash data are compiled using NMDOT Uniform Crash Reports (UCR), submitted by law enforcement agencies in the state, for any incident on a public roadway involving one or more motor vehicles that resulted in death, injury, or at least \$500 in property damage. These reports are processed by the NMDOT Traffic Records Bureau and analyzed by the University of New Mexico, Geospatial and Population Studies, Traffic Research Unit (TRU).

DWI Citation Tracking System (CTS) – New Mexico Taxation and Revenue Department (NM TRD), Motor Vehicle Division (MVD), DWI Citation Tracking System (CTS), as of October 2020. Repeat offenders are identified by the combination of account key, arrest date, and citation number. County data are based upon the county where the arrest took place. City data are based upon the city where the offender resides.

Urban Areas – Areas defined by the New Mexico Department of Transportation, Asset Management and Planning, 2010 U.S. Census Urbanized Area Boundaries, NMDOT-Adjusted, and U.S. Census Urban Clusters, August 21, 2013. Urban areas for crash years 2013-2017 include a 1/2 mile buffer extending out from those urban boundaries. In crashes before 2013, “urban” was defined as a town or city with a population of at least 2,500 people.

Table 1: Total Crashes and Alcohol-involved Crashes by Crash Severity in Otero County, 2010-2019

Year	Total Crashes				Alcohol-involved Crashes			
	Fatal	Injury	Property Damage Only	Total	Fatal	Injury	Property Damage Only	Total
2010	12	364	725	1,101	7	25	22	54
2011	12	341	812	1,165	7	24	38	69
2012	14	319	722	1,055	6	29	31	66
2013	7	307	658	972	2	24	26	52
2014	11	232	633	876	7	13	24	44
2015	10	283	688	981	2	26	20	48
2016	3	294	652	949	1	20	26	47
2017	6	329	660	995	4	16	22	42
2018	7	272	590	869	1	19	22	42
2019	9	261	607	877	2	17	22	41

Figure 1: Alcohol-involved Fatal and Injury Crashes Compared with Non-alcohol-involved Fatal and Injury Crashes in Otero County, 2010-2019

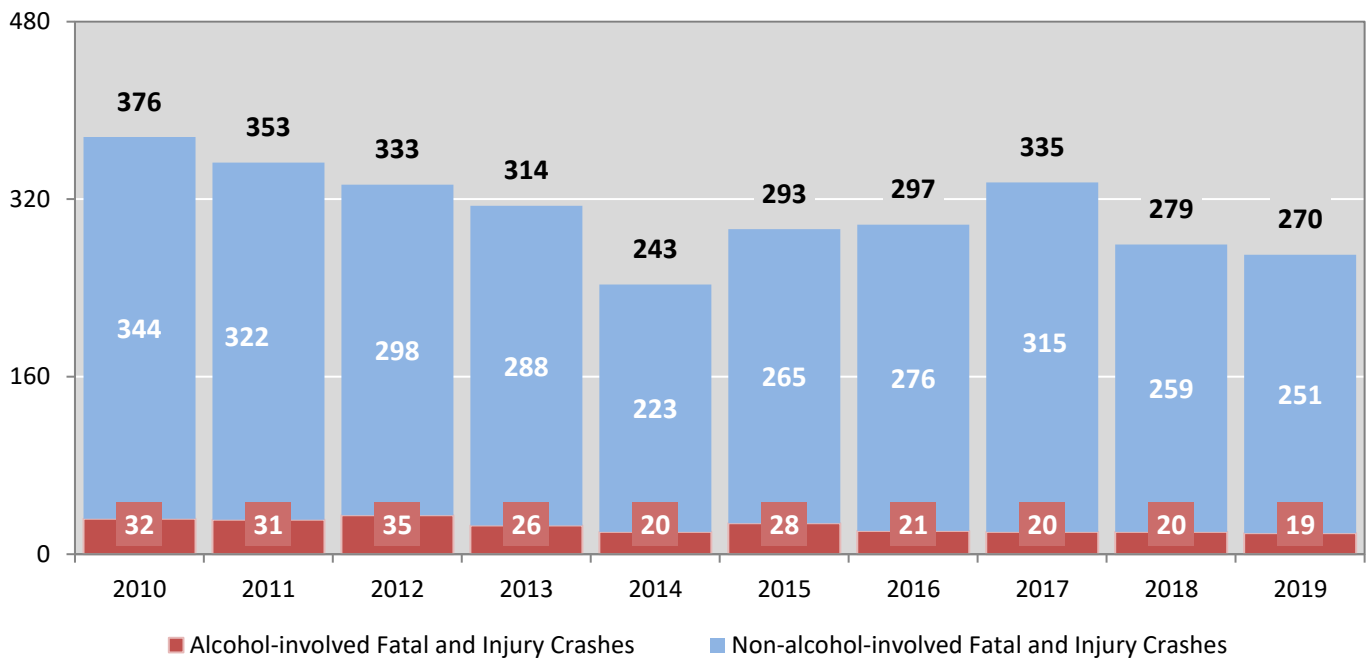


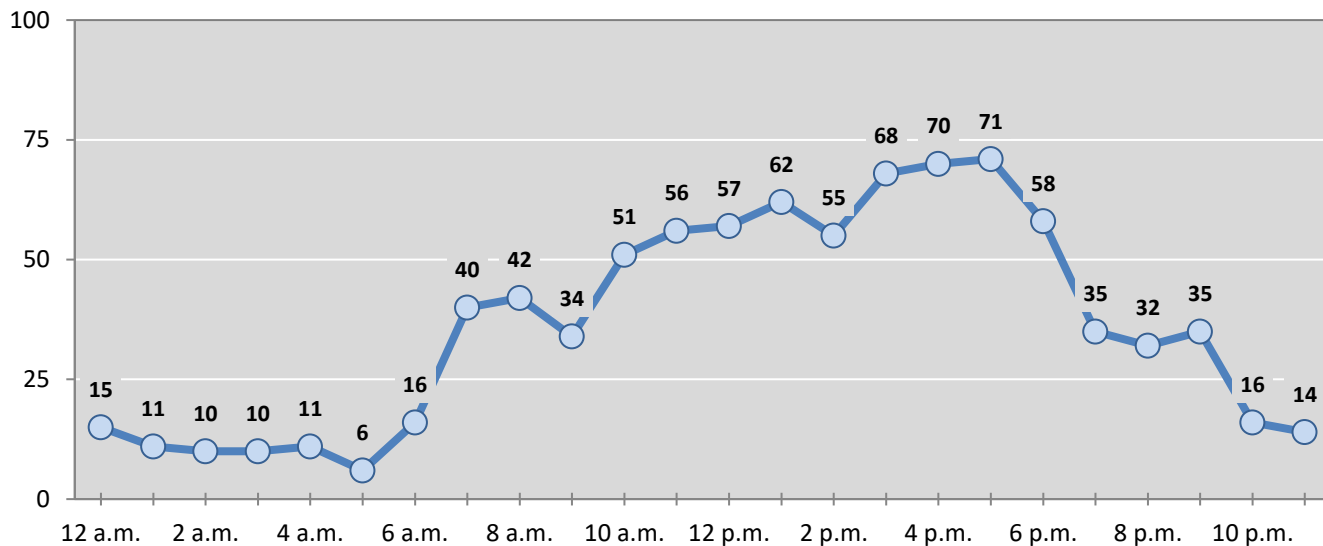
Table 2: Crashes by Month in Otero County, 2015-2019

Month	Crashes					5-Year Average
	2015	2016	2017	2018	2019	
January	86	81	56	52	69	69
February	79	78	67	54	76	71
March	72	93	85	80	76	81
April	68	88	81	58	74	74
May	83	71	104	50	70	76
June	95	81	87	72	65	80
July	83	86	95	66	73	81
August	78	63	77	78	68	73
September	92	76	77	85	72	80
October	89	70	91	92	74	83
November	73	78	90	100	77	84
December	83	84	85	82	83	83
Total Crashes	981	949	995	869	877	934

Table 3: Alcohol-involved Crashes by Month in Otero County, 2015-2019

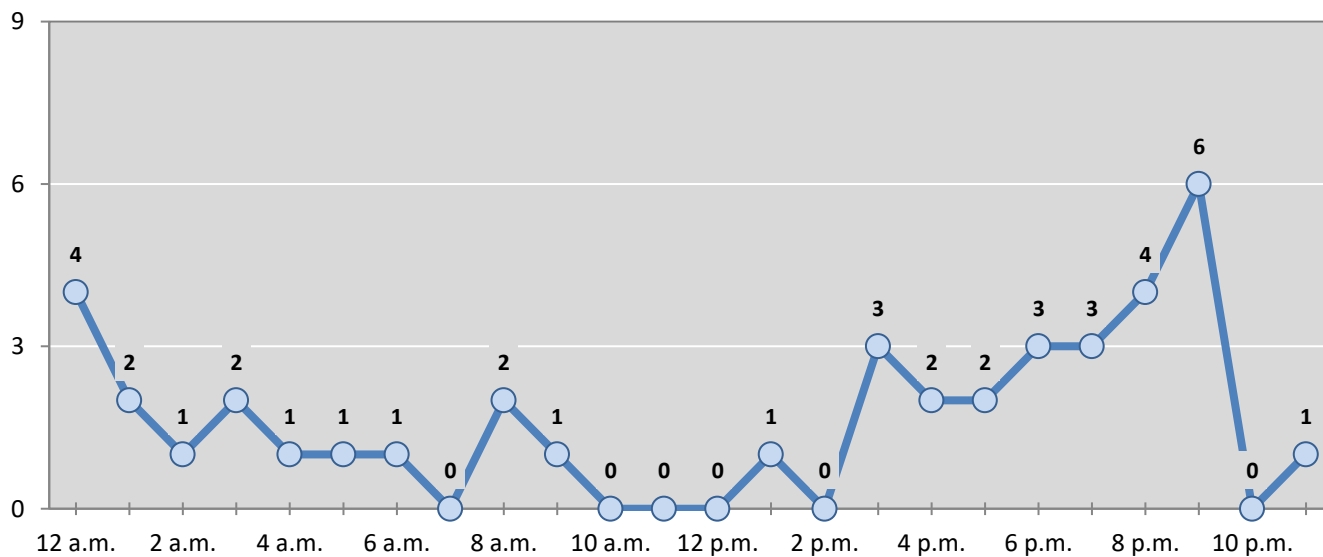
Month	Alcohol-involved Crashes					5-Year Average
	2015	2016	2017	2018	2019	
January	0	7	1	3	1	2
February	3	4	4	2	6	4
March	4	1	4	2	3	3
April	2	4	3	1	0	2
May	6	4	9	1	2	4
June	7	7	3	4	4	5
July	4	4	3	3	9	5
August	9	2	4	4	2	4
September	3	3	2	5	5	4
October	2	2	4	5	2	3
November	4	5	3	5	5	4
December	4	4	2	7	2	4
Total Crashes	48	47	42	42	41	44

Figure 2: Crashes by Hour in Otero County, 2019



* In 2019, Otero County had 2 crashes for which hour data were missing.

Figure 3: Alcohol-involved Crashes by Hour in Otero County, 2019



* In 2019, Otero County had 1 alcohol-involved crashes for which hour data were missing.

Table 4: Alcohol-involved Crashes by Day of Week in Otero County, 2015-2019

Day of Week	Alcohol-involved Crashes					5-Year Average
	2015	2016	2017	2018	2019	
Sunday	7	11	6	5	6	7
Monday	5	8	3	8	4	6
Tuesday	2	2	8	3	6	4
Wednesday	5	3	9	3	5	5
Thursday	9	8	2	9	3	6
Friday	8	5	6	7	5	6
Saturday	12	10	8	7	12	10
Total Crashes	48	47	42	42	41	44

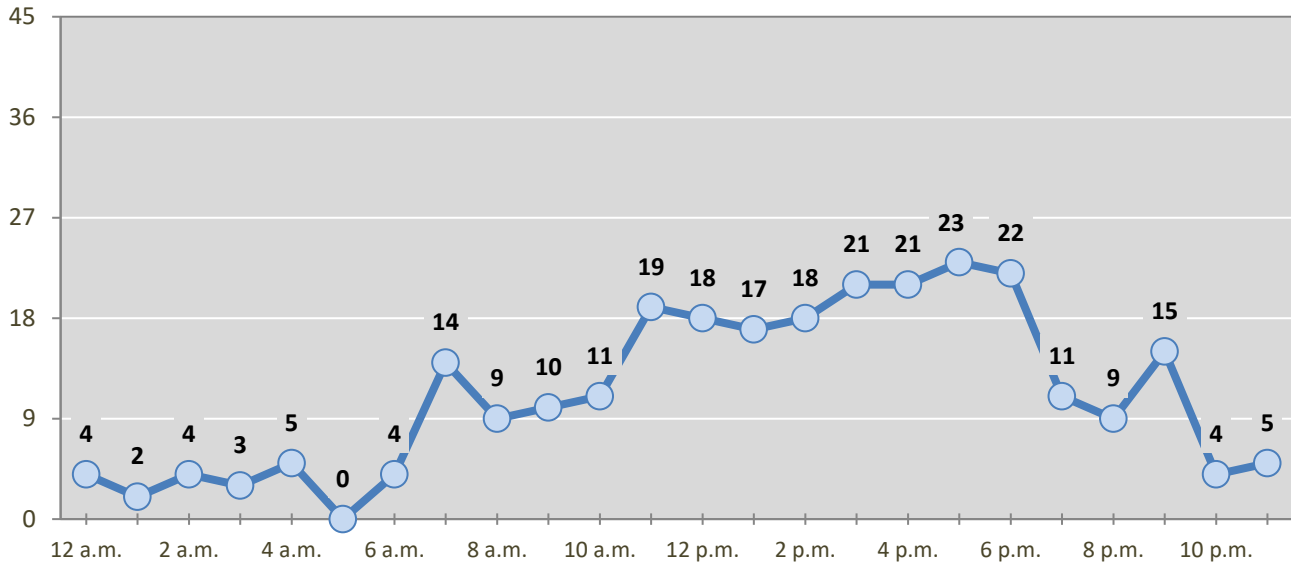
Table 5: Fatal and Injury Crashes by Day of Week in Otero County, 2015-2019

Day of Week	Fatal and Injury Crashes					5-Year Average
	2015	2016	2017	2018	2019	
Sunday	32	28	29	19	34	28
Monday	38	56	55	44	39	46
Tuesday	39	40	47	41	40	41
Wednesday	51	50	49	43	35	46
Thursday	49	35	40	45	38	41
Friday	47	49	61	46	43	49
Saturday	37	39	54	41	41	42
Total Crashes	293	297	335	279	270	295

Table 6: Pedestrian and Pedalcyclist Crashes by Day of Week in Otero County, 2015-2019

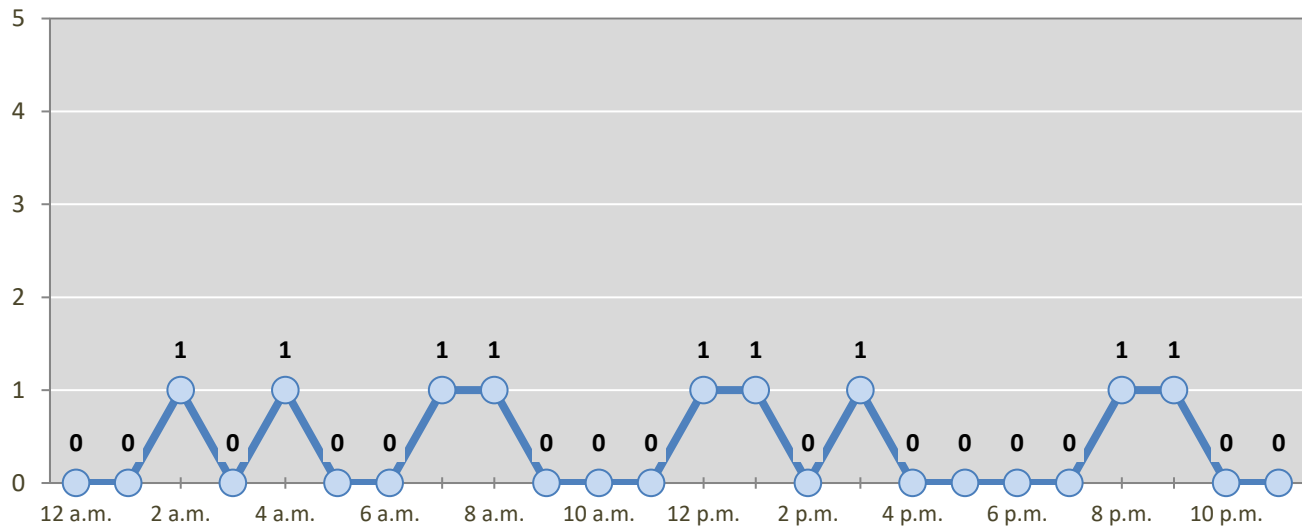
Day of Week	Pedestrian and Pedalcyclist Crashes					5-Year Average
	2015	2016	2017	2018	2019	
Sunday	1	0	0	3	2	1
Monday	2	7	6	1	0	3
Tuesday	6	1	4	2	2	3
Wednesday	4	2	2	1	2	2
Thursday	1	3	5	2	1	2
Friday	3	3	3	2	3	3
Saturday	1	3	3	1	0	2
Total Crashes	18	19	23	12	10	16

Figure 4: Fatal and Injury Crashes by Hour in Otero County, 2019



* In 2019, Otero County had 1 crashes for which hour data were missing.

Figure 5: Pedestrian and Pedalcyclist Crashes by Hour in Otero County, 2019



* In 2019, Otero County had 1 crashes for which hour data were missing.

Table 7: Severity of Injuries to People in Crashes by Rural and Urban Location in Otero County, 2019

Urban and Rural Locations by Alcohol-involvement	People in Crashes by Severity of Injuries					Total People
	Fatalities (Class K)	Suspected Serious Injuries (Class A)	Suspected Minor Injuries (Class B)	Possible Injuries (Class C)	No Apparent Injuries (Class O)	
People in Alcohol-involved Crashes	3	1	14	15	71	104
Urban	0	0	6	6	43	55
Rural Non-Interstate	3	1	8	9	28	49
Rural Interstate	0	0	0	0	0	0
People in Crashes	11	15	115	259	1,680	2,080
Urban	1	4	50	177	1,129	1,361
Rural Non-Interstate	10	11	65	82	551	719
Rural Interstate	0	0	0	0	0	0
Percent in Alcohol-involved Crashes	27%	7%	12%	6%	4%	5%

Table 8: Total Crashes by Roadway System and Crash Severity in Otero County, 2015-2019

Crash Severity by System	Crashes by Year					5-Year Average
	2015	2016	2017	2018	2019	
Total Rural Interstate	0	0	0	0	0	0
Fatal Crash	0	0	0	0	0	0
Injury Crash	0	0	0	0	0	0
Property Damage Only Crash	0	0	0	0	0	0
Total Rural Non-Interstate	311	286	320	369	380	333
Fatal Crash	6	3	4	6	8	5
Injury Crash	95	79	113	123	110	104
Property Damage Only Crash	210	204	203	240	262	224
Total Urban	670	663	675	500	497	602
Fatal Crash	4	0	2	1	1	2
Injury Crash	188	215	216	149	151	184
Property Damage Only Crash	478	448	457	350	345	416

Table 9: Total Crashes by Crash Classification in Otero County, 2015-2019

Crash Classification	Total Crashes by Year					5-Year Average
	2015	2016	2017	2018	2019	
Animal	69	90	72	74	93	80
Fixed Object	128	109	107	103	97	109
Other (Non-Collision)	25	19	23	27	22	23
Other (Object)	25	21	30	29	29	27
Other Vehicle	580	530	598	493	517	544
Overturn/Rollover	15	57	47	53	45	43
Parked Vehicle	69	86	75	57	41	66
Pedalcyclist	9	7	10	3	4	7
Pedestrian	9	13	13	9	6	10
Railroad Train	0	0	0	0	0	0
Rollover	42	11	14	11	14	18
Vehicle on Other Road	8	5	6	6	5	6
Missing Data	2	1	0	4	4	2
Total Crashes	981	949	995	869	877	934

Table 10: Vehicles in Crashes by Vehicle Type in Otero County, 2015-2019

Vehicle Type ¹	Vehicles in Crashes by Vehicle Type					5-Year Average
	2015	2016	2017	2018	2019	
Bus	1	6	4	4	2	3
Motorcycle/ATV	43	48	45	36	43	43
Passenger	778	804	830	749	744	781
Pedalcyclist	9	7	10	3	4	7
Pedestrian	9	12	13	9	6	10
Pickup	398	322	376	327	325	350
Semi	29	40	52	32	52	41
Van/SUV/4WD	347	327	362	286	280	320
Other Vehicle	20	10	4	8	0	8
Missing Data	73	60	56	35	26	50
Total Vehicles	1,707	1,636	1,752	1,489	1,482	1,613

¹ Pedestrians and pedalcyclists are counted as non-motorized vehicles, when involved in a crash with a motor vehicle. See Page 17 for data on drivers of non-motorized vehicles in crashes (i.e. pedestrians and pedalcyclists).

Table 11: Motor Vehicle Drivers in Crashes by Vehicle Type and Age Group in Otero County, 2019

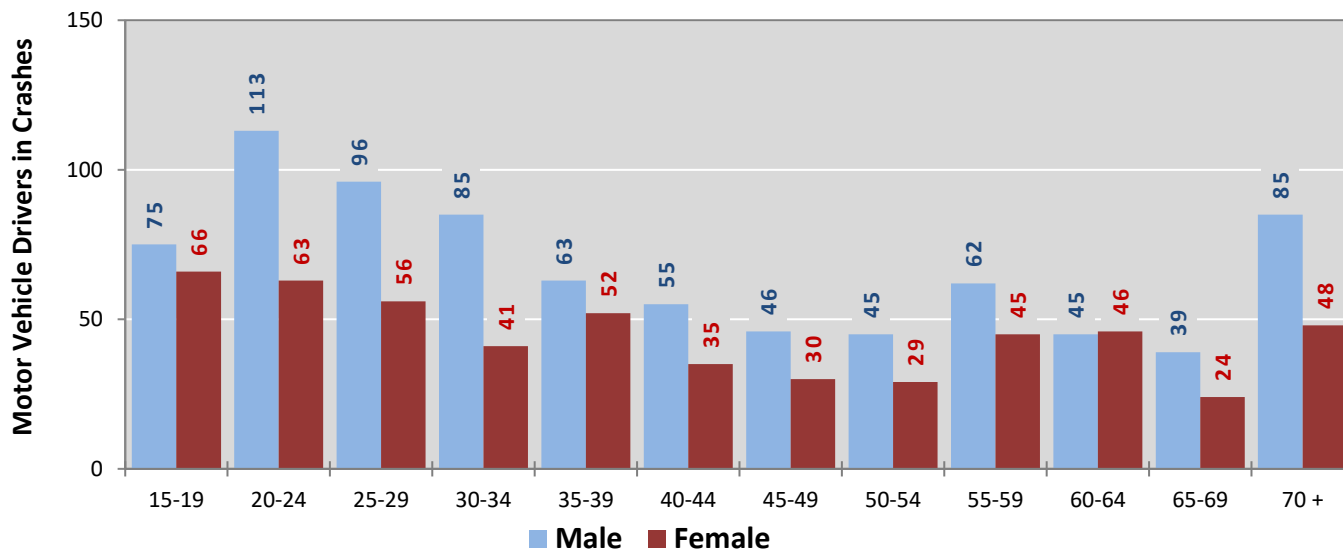
Age Groups	Motor Vehicle ¹ Drivers by Vehicle Type and Age Group								Total Drivers
	Bus	Motor-cycle	Passenger	Pickup	Semi	Van 4WD SUV	Other Vehicle	Missing Data	
15-19	0	6	86	27	0	22	0	0	141
20-24	0	4	120	26	3	23	0	0	176
25-29	0	5	77	28	5	36	0	1	152
30-34	0	7	57	30	5	27	0	0	126
35-39	0	3	51	23	6	32	0	0	115
40-44	0	3	46	22	6	13	0	0	90
45-49	0	4	30	21	4	17	0	0	76
50-54	0	2	39	16	2	15	0	0	74
55-59	0	2	45	34	9	17	0	0	107
60-64	1	3	46	20	2	19	0	0	91
65-69	1	1	26	19	4	12	0	0	63
70 +	0	3	61	40	0	29	0	0	133
Missing Data	0	0	60	19	6	18	0	25	128
Total Drivers	2	43	744	325	52	280	0	26	1,472

Table 12: Alcohol-involved Motor Vehicle Drivers in Crashes by Vehicle Type and Age Group in Otero County, 2019

Age Groups	Alcohol-involved Motor Vehicle ¹ Drivers by Vehicle Type and Age Group								Total Drivers
	Bus	Motor-cycle	Passenger	Pickup	Semi	Van 4WD SUV	Other Vehicle	Missing Data	
15-19	0	0	0	0	0	0	0	0	0
20-24	0	0	4	4	0	2	0	0	10
25-29	0	1	4	0	0	2	0	0	7
30-34	0	0	4	1	0	1	0	0	6
35-39	0	1	4	0	0	1	0	0	6
40-44	0	0	0	0	0	0	0	0	0
45-49	0	0	1	0	0	0	0	0	1
50-54	0	0	1	0	0	0	0	0	1
55-59	0	0	1	2	0	0	0	0	3
60-64	0	0	2	0	0	0	0	0	2
65-69	0	0	1	0	0	0	0	0	1
70 +	0	1	0	1	0	1	0	0	3
Missing Data	0	0	1	0	0	0	0	0	1
Total Drivers	0	3	23	8	0	7	0	0	41

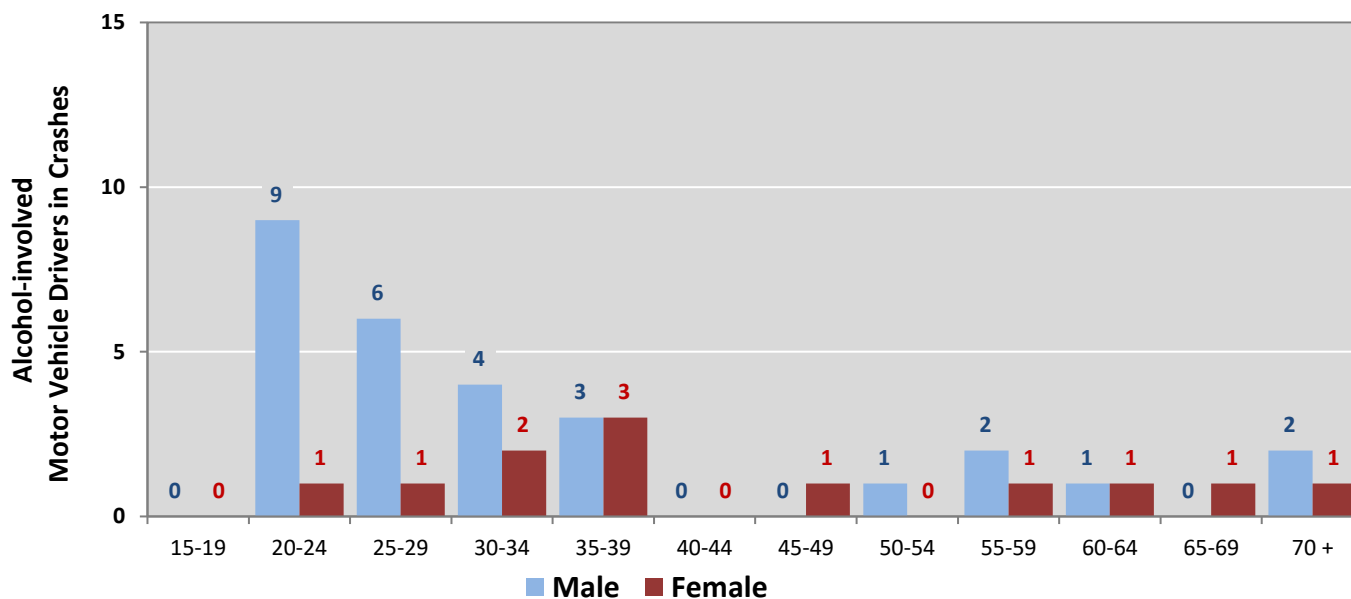
¹ See Page 17 for data on drivers of non-motorized vehicles in crashes (i.e. pedestrians and pedalcyclists).

Figure 6: Motor Vehicle Drivers in Crashes by Age Group and Sex in Otero County, 2019



* In 2019, Otero County had 128 drivers in crashes for which age or sex data were missing.

Figure 7: Alcohol-involved Motor Vehicle Drivers in Crashes by Age Group and Sex in Otero County, 2019



* In 2019, Otero County had 1 drivers in crashes for which age or sex data were missing.

Table 13: Alcohol-involved Motor Vehicle Drivers Under 21 (Ages 15-20) in Crashes in Otero County, 2015-2019

Age ¹	Year					5-Year Total
	2015	2016	2017	2018	2019	
15	0	0	0	0	0	0
16	0	2	0	0	0	2
17	2	1	0	0	0	3
18	2	0	0	0	0	2
19	1	0	1	2	0	4
20	2	1	2	2	1	8
Total Drivers	7	4	3	4	1	19

Table 14: Motor Vehicle Drivers Under 21 (Ages 15-20) in Crashes by Age, Sex and Alcohol-involvement in Otero County, 2019

Age ¹	Total Drivers				Alcohol-involved Drivers			
	Sex		Total Drivers	Percent of Total	Sex		Total Drivers	Percent of Total
	Male	Female			Male	Female		
15	2	1	3	2%	0	0	0	0%
16	11	14	25	13%	0	0	0	0%
17	18	13	31	17%	0	0	0	0%
18	25	19	44	24%	0	0	0	0%
19	19	19	38	20%	0	0	0	0%
20	32	13	45	24%	1	0	1	100%
Total Drivers	107	79	186	100%	1	0	1	100%

¹ For analysis of drivers under age 21, when the driver age or sex are not identified on the crash report (typically hit-and-run drivers), the driver data are considered unreliable and are excluded from the analysis.

**Table 15: Frequency of Contributing Factors in Crashes
by Crash Severity in Otero County, 2019**

Contributing Factors	Frequency of Contributing Factor ¹ by Crash Severity			
	Frequency in Fatal Crashes	Frequency in Injury Crashes	Frequency in Property Damage Only Crashes	Frequency in All Crashes
Human	17	454	805	1,276
Driver Inattention	4	159	293	456
Failed to Yield Right of Way	1	73	100	174
Other Improper Driving	1	35	61	97
Following Too Closely	0	30	54	84
Excessive Speed	5	38	39	82
Made Improper Turn	1	16	33	50
Speed Too Fast for Conditions	0	23	23	46
Alcohol Involved	2	17	22	41
Disregarded Traffic Signal	0	8	24	32
Improper Lane Change	0	5	26	31
Avoid No Contact - Vehicle	0	10	19	29
Improper Backing	0	4	25	29
Passed Stop Sign	0	11	16	27
Improper Overtaking	0	3	19	22
Avoid No Contact - Other	0	2	19	21
Vehicle Skidded Before Brake	0	7	8	15
Drove Left Of Center	1	3	6	10
High Speed Pursuit	0	3	3	6
Cell Phone	0	1	4	5
Driverless Moving Vehicle	0	0	5	5
Failed to Yield to Police Vehicle	0	3	2	5
Drug Involved	2	1	2	5
Failed to Yield to Emergency Vehicle	0	1	2	3
Pedestrian Error	0	1	0	1
Texting	0	0	0	0
Vehicle	1	9	25	35
Other Mechanical Defect	0	4	13	17
Defective Tires	0	1	8	9
Inadequate Brakes	1	3	3	7
Defective Steering	0	1	1	2
Environment	0	0	2	2
Road Defect	0	0	1	1
Traffic Control Not Functioning	0	0	1	1
Low Visibility Due to Smoke	0	0	0	0
Other	5	203	493	701
None	1	163	390	554
Other - No Driver Error	4	40	103	147

¹ Multiple contributing factors may be reported for any vehicle in a crash.

Table 16: People in Crashes by Crash Classification and Severity of Injuries in Otero County, 2019

Crash Classification	People in Crashes by Severity of Injuries					Total People
	Fatalities (Class K)	Suspected Serious Injuries (Class A)	Suspected Minor Injuries (Class B)	Possible Injuries (Class C)	No Apparent Injuries (Class O)	
Animal	0	1	9	14	117	141
Fixed Object	0	4	16	12	103	135
Other (Non-Collision)	0	0	7	4	18	29
Other (Object)	0	0	0	3	42	45
Other Vehicle	5	6	49	199	1,244	1,503
Overturn/Rollover	3	3	15	17	27	65
Parked Vehicle	0	0	3	0	93	96
Pedalcyclist	0	0	2	2	5	9
Pedestrian	1	0	6	2	6	15
Railroad Train	0	0	0	0	0	0
Rollover	2	1	7	4	7	21
Vehicle on Other Road	0	0	0	0	12	12
Missing Data	0	0	1	2	6	9
Total People	11	15	115	259	1,680	2,080

Table 17: Killed or Injured Unbelted People in Crashes by Sex and Age Group in Otero County, 2019

Age Groups	Unbelted People Killed or Injured ^{1,2}				Total People
	Male	Percent of Male	Female	Percent of Female	
0-4	0	0%	0	0%	0
5-9	0	0%	0	0%	0
10-14	0	0%	0	0%	0
15-19	1	14%	0	0%	1
20-24	0	0%	0	0%	0
25-29	2	29%	0	0%	2
30-34	0	0%	0	0%	0
35-39	0	0%	0	0%	0
40-44	2	29%	0	0%	2
45-49	0	0%	0	0%	0
50-54	2	29%	2	40%	4
55-59	0	0%	1	20%	1
60-64	0	0%	0	0%	0
65-69	0	0%	1	20%	1
70 +	0	0%	0	0%	0
Missing Data	0	0%	1	20%	1
Total People	7	100%	5	100%	12

¹ People injured are in one of three categories: suspected serious injury, suspected minor injury, or possible injury.

² Excludes people in or on buses, heavy trucks, motorcycles, or ATVs.

Figure 8: Seatbelt Use by People in Crashes with Fatal or Suspected Serious Injuries in Otero County, 2015-2019

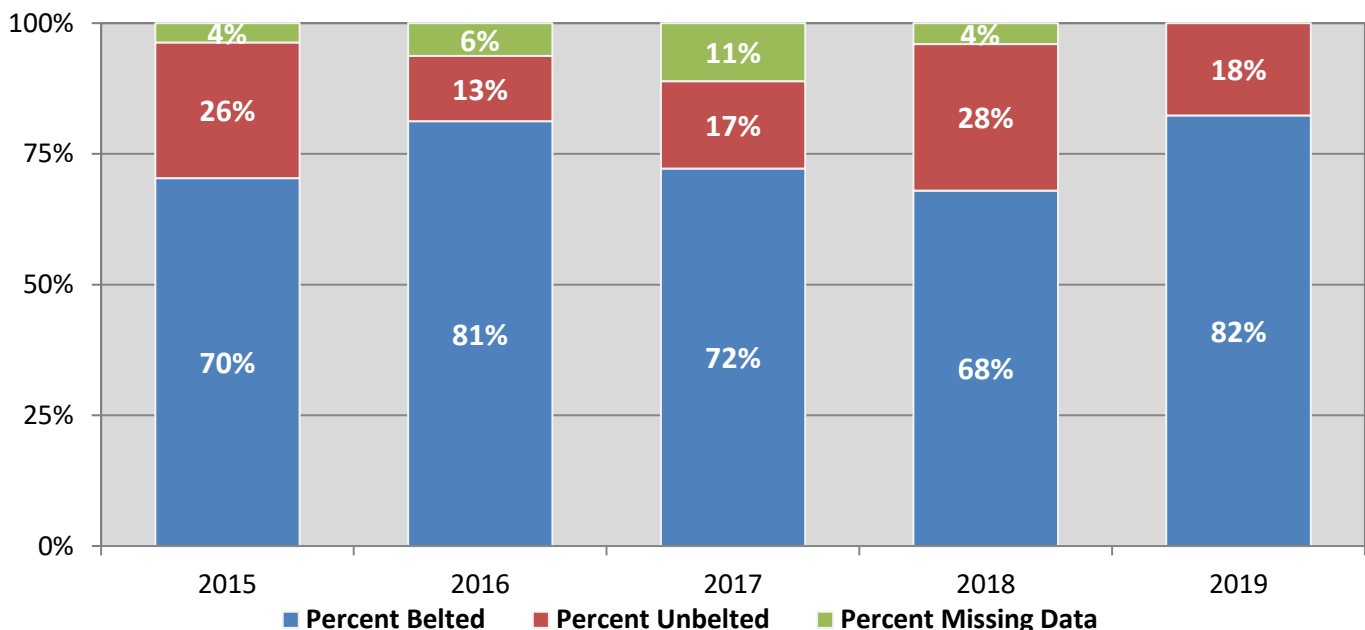
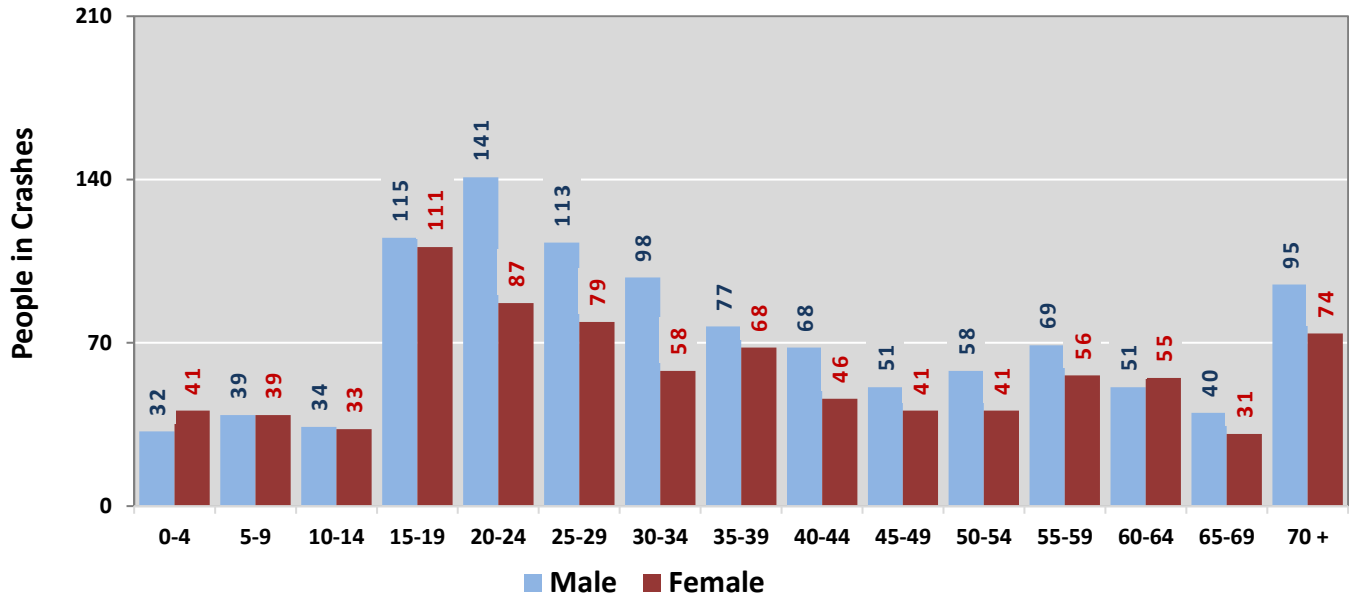
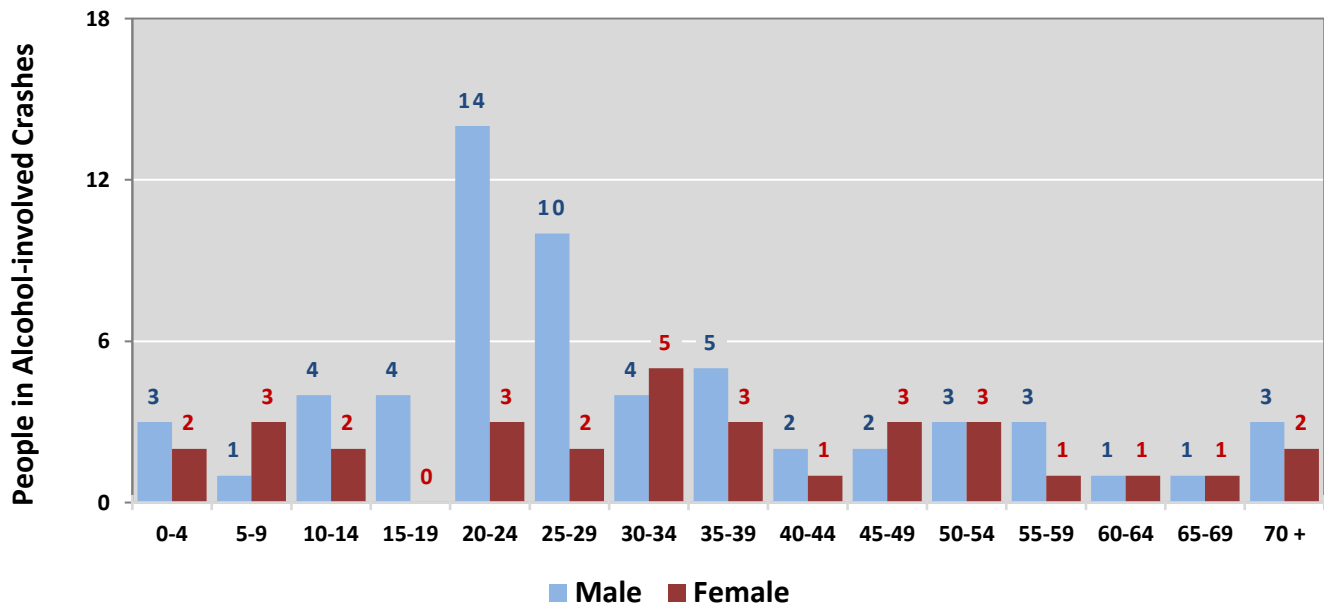


Figure 9: People in Crashes by Age Group and Sex in Otero County, 2019



* In 2019, Otero County had 139 people in crashes for which age or sex data were missing.

Figure 10: People in Alcohol-involved Crashes by Age Group and Sex in Otero County, 2019



* In 2019, Otero County had 12 people in alcohol-involved crashes for which age or sex data were missing.

Table 18: Pedestrians and Pedalcyclists in Crashes by Age Group in Otero County, 2015-2019

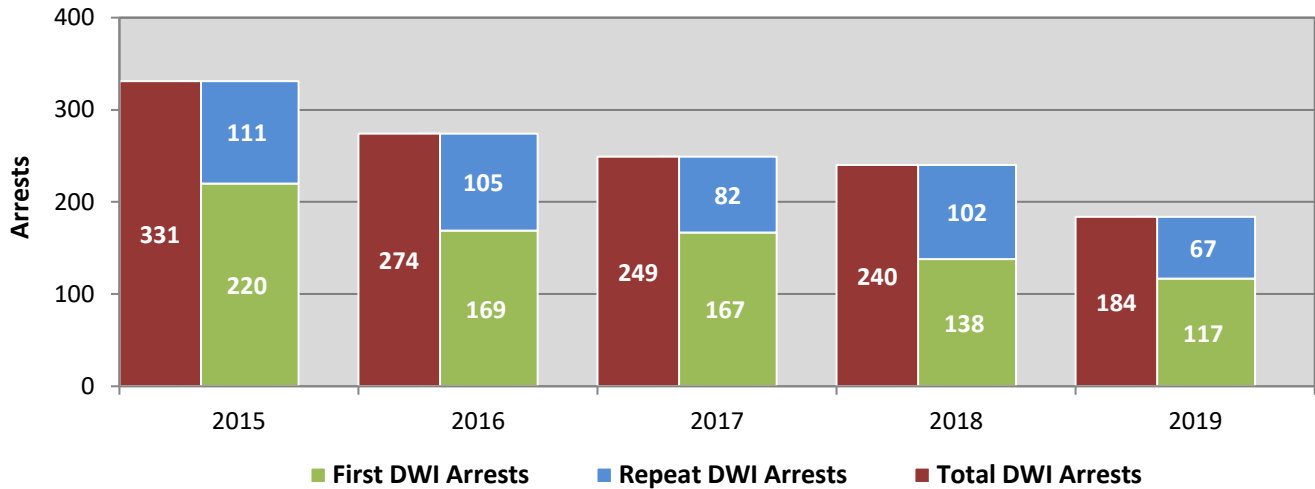
Age Groups	Pedestrians and Pedalcyclists ¹ in Crashes					5-Year Total People
	2015	2016	2017	2018	2019	
0-4	0	0	0	0	0	0
5-9	1	0	1	0	0	2
10-14	1	2	2	2	2	9
15-19	2	4	4	2	1	13
20-24	3	0	1	2	0	6
25-29	3	0	1	1	1	6
30-34	0	1	2	1	1	5
35-39	0	2	4	1	1	8
40-44	2	1	2	1	3	9
45-49	0	3	2	0	0	5
50-54	1	3	1	0	0	5
55-59	0	0	0	1	0	1
60-64	2	0	1	1	0	4
65-69	0	1	1	0	0	2
70 +	1	0	0	0	0	1
Missing Data	2	2	1	0	1	6
Total People	18	19	23	12	10	82

Table 19: Pedestrians and Pedalcyclists in Crashes by Alcohol Involvement and Severity of Injuries in Otero County, 2019

Alcohol Involvement	Pedestrians and Pedalcyclists ¹ in Crashes					Total People
	Fatalities (Class K)	Suspected Serious Injuries (Class A)	Suspected Minor Injuries (Class B)	Possible Injuries (Class C)	No Apparent Injury (Class O)	
Total Pedalcyclists	0	0	2	2	0	4
Involved	0	0	0	0	0	0
Not Involved	0	0	2	2	0	4
Total Pedestrians	1	0	3	2	0	6
Involved	0	0	0	0	0	0
Not Involved	1	0	3	2	0	6
Total People	1	0	5	4	0	10

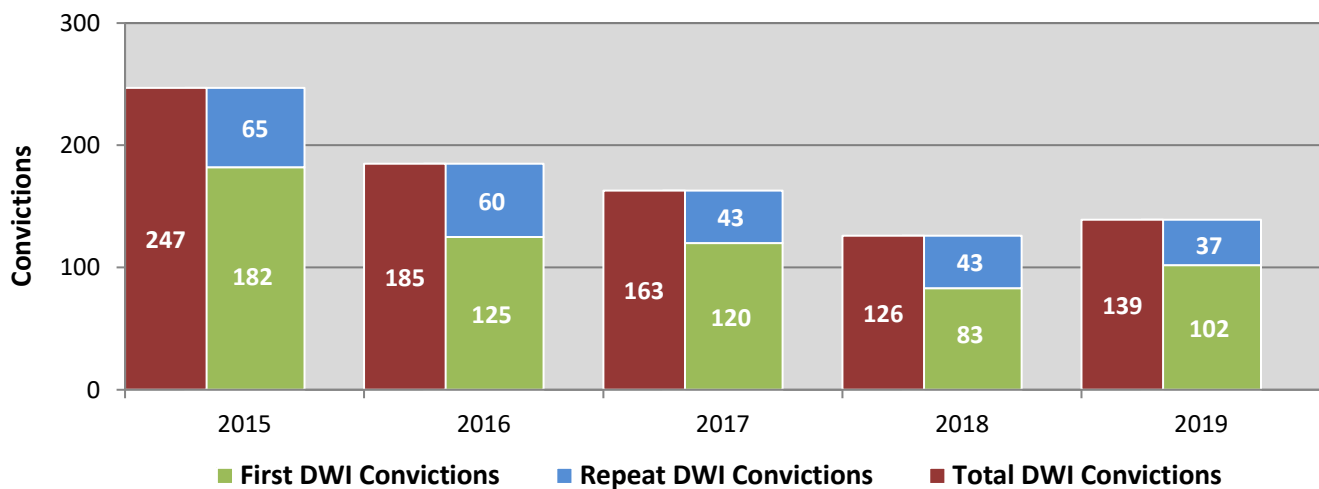
¹ Pedestrians and pedalcyclists are counted as non-motorized vehicles, when involved in a crash with a motor vehicle.

**Figure 11: DWI Arrests in Otero County,
Showing First and Repeat DWI Arrests, 2015-2019**



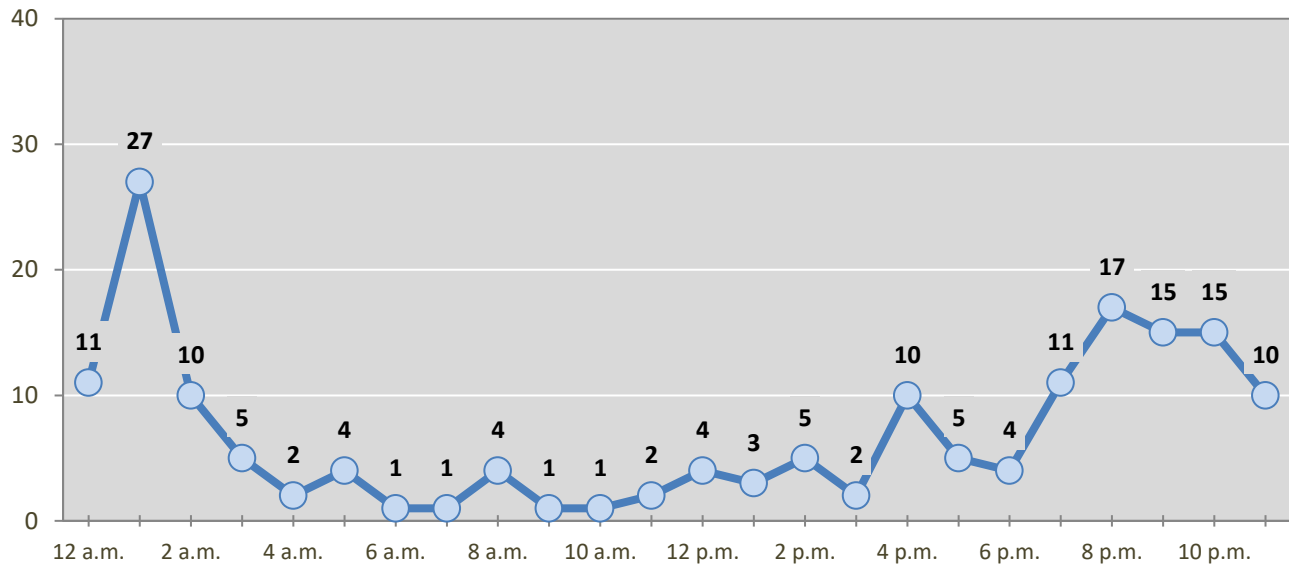
*Values are based upon the year of the arrest.

**Figure 12: DWI Convictions in Otero County,
Showing First and Repeat DWI Convictions, 2015-2019**



*Values are based upon the year of the conviction.

Figure 13: DWI Arrests by Hour in Otero County, 2019



* In 2019, Otero County had 14 arrests for which hour data were missing.

Table 20: DWI Arrests by Day of Week in Otero County, 2015-2019

Day of Week	Year					5-Year Average
	2015	2016	2017	2018	2019	
Sunday	70	50	55	53	39	53
Monday	29	29	22	31	19	26
Tuesday	22	21	26	29	25	25
Wednesday	40	25	20	15	22	24
Thursday	46	31	34	20	21	30
Friday	52	47	40	41	20	40
Saturday	72	71	52	51	38	57
Total Arrests	331	274	249	240	184	256

Table 21: Driver First DWI Arrests by Age Group in Otero County, 2015-2019

Age Groups	Driver First DWI Arrests ¹				
	2015	2016	2017	2018	2019
15-19	18	9	6	9	10
20-24	40	39	32	34	20
25-29	60	41	44	31	19
30-34	27	16	22	21	14
35-39	12	17	18	18	12
40-44	14	7	15	5	8
45-49	10	9	7	5	13
50-54	13	11	5	2	11
55-59	13	9	7	8	3
60-64	8	4	6	2	3
65-69	3	6	4	1	2
70 +	2	1	1	2	1
Missing Data	0	0	0	0	1
Total Drivers	220	169	167	138	117

¹ Values are based upon the year of the arrest.

Table 22: Driver Repeat DWI Arrests by Age Group in Otero County, 2015-2019

Age Groups	Driver Repeat DWI Arrests ¹				
	2015	2016	2017	2018	2019
15-19	0	0	1	0	0
20-24	5	6	2	7	7
25-29	18	18	26	19	13
30-34	17	13	10	18	20
35-39	12	17	9	16	4
40-44	18	11	9	13	4
45-49	11	11	6	5	7
50-54	11	9	7	7	3
55-59	5	12	5	9	7
60-64	8	4	2	3	1
65-69	5	2	4	4	1
70 +	1	2	1	1	0
Missing Data	0	0	0	0	0
Total Drivers	111	105	82	102	67

¹ Values are based upon the year of the arrest.

Table 23: Driver First DWI Convictions by Age Group in Otero County, 2015-2019

Age Groups	Driver First DWI Convictions ¹				
	2015	2016	2017	2018	2019
15-19	9	4	8	6	4
20-24	39	31	17	23	19
25-29	38	30	35	23	21
30-34	25	16	14	7	16
35-39	15	11	18	9	10
40-44	15	4	8	5	6
45-49	9	8	4	1	7
50-54	11	4	7	0	8
55-59	12	9	4	3	5
60-64	3	5	3	3	3
65-69	3	3	2	3	2
70 +	3	0	0	0	1
Missing Data	0	0	0	0	0
Total Drivers	182	125	120	83	102

¹ Values are based upon the year of the conviction.

Table 24: Driver Repeat DWI Convictions by Age Group in Otero County, 2015-2019

Age Groups	Driver Repeat DWI Convictions ¹				
	2015	2016	2017	2018	2019
15-19	0	0	0	0	0
20-24	5	2	1	2	4
25-29	9	8	11	13	5
30-34	5	11	5	14	10
35-39	12	7	7	4	5
40-44	10	9	5	1	3
45-49	7	9	2	2	3
50-54	9	7	6	0	3
55-59	2	4	3	3	1
60-64	1	1	1	1	3
65-69	4	2	2	1	0
70 +	1	0	0	2	0
Missing Data	0	0	0	0	0
Total Drivers	65	60	43	43	37

¹ Values are based upon the year of the conviction.

Table 25: Court Disposition of DWI Arrests for Otero County and the State, 2019

Court Disposition of DWI Arrest ¹	Otero County	Statewide	Percent of Statewide
Total DWI Arrests	184	10,376	1.8%
DWI Arrests Resulting in Convictions	105	4,597	2.3%
DWI Arrests Resulting in Dismissals ²	8	887	0.9%
DWI Arrests Awaiting Disposition	71	4,892	1.5%

¹ These are the number of DWI arrests in 2019 and whether the case resulted in a conviction or dismissal, or is still awaiting court disposition, as reported in the NM MVD Citation Tracking System (CTS) as of October 2020.

² For this table, a very small number of "not guilty" rulings may be included in the category Dismissals.

Table 26: Average Number of Days from Date of DWI Arrest to Date of Court Disposition in Otero County and the State, 2019

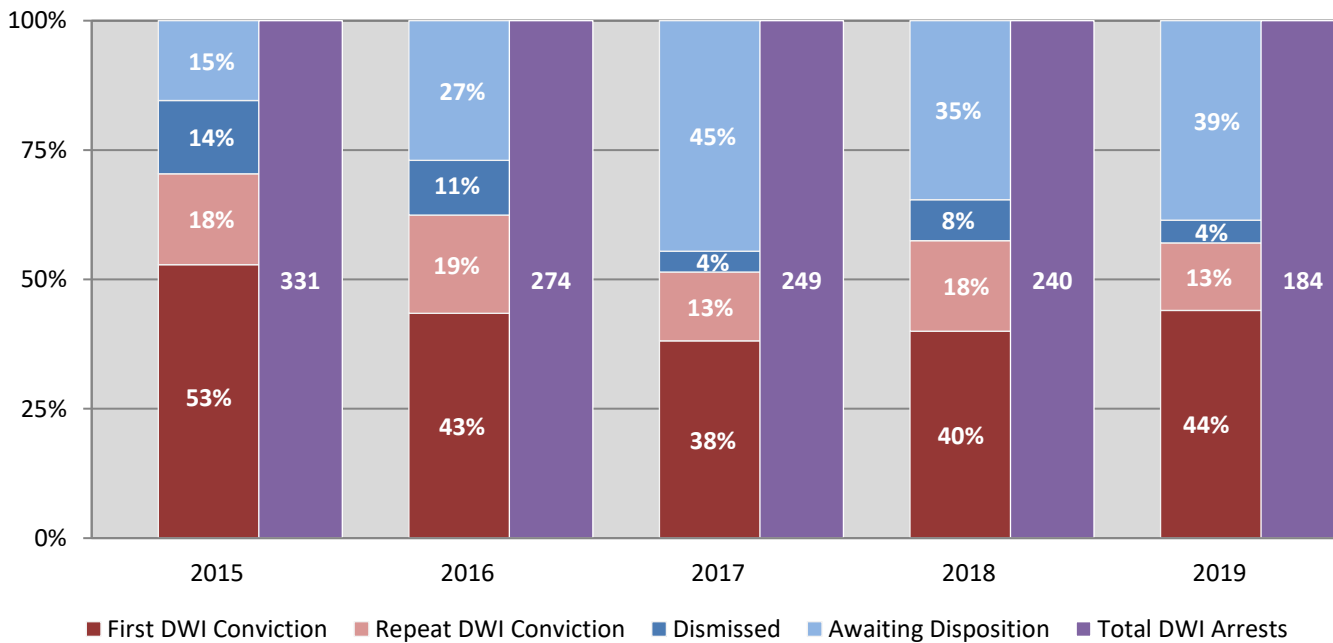
Court Disposition	Average Number of Days		Deviation from Statewide Average
	Otero County	Statewide	
DWI Conviction	98	159	-60
DWI Dismissal	159	160	-1

Table 27: Court Disposition of DWI Arrests in Otero County, 2015-2019

Year of DWI Arrest ¹	Court Disposition				Total DWI Arrests
	First DWI Conviction	Repeat DWI Conviction	Dismissed	Awaiting Disposition	
2015	175	58	47	51	331
2016	119	52	29	74	274
2017	95	33	10	111	249
2018	96	42	19	83	240
2019	81	24	8	71	184

¹ Values are based upon the year of the arrest.

Figure 14: Court Dispositions by Percentage of DWI Arrests in Otero County, 2015-2019



*Table 27 contains the values used to calculate percentages shown in Figure 14.