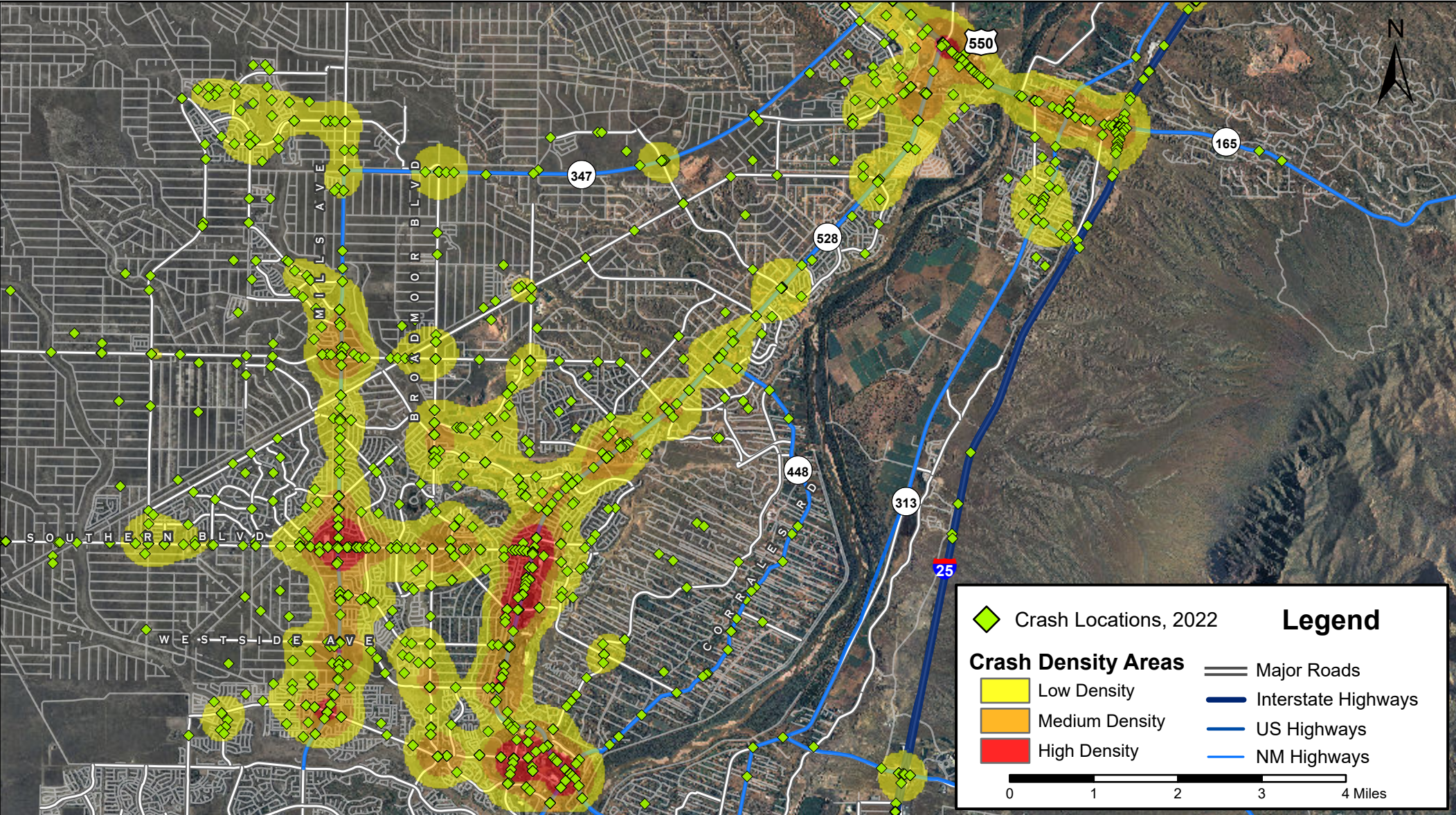


# Density Map of All Crashes in Rio Rancho, Corrales, and Bernalillo, 2022



Prepared for the New Mexico Department of Transportation,  
Traffic Safety Division, Traffic Records Bureau. Under Contract CO6380 by the  
University of New Mexico, Geospatial and Population Studies, Traffic Research Unit (TRU)

gps.unm.edu December 2023 ContactGPS@unm.edu

Distributed in compliance with New Mexico Statute 66-7-214 as a reference source regarding New Mexico traffic crashes.

