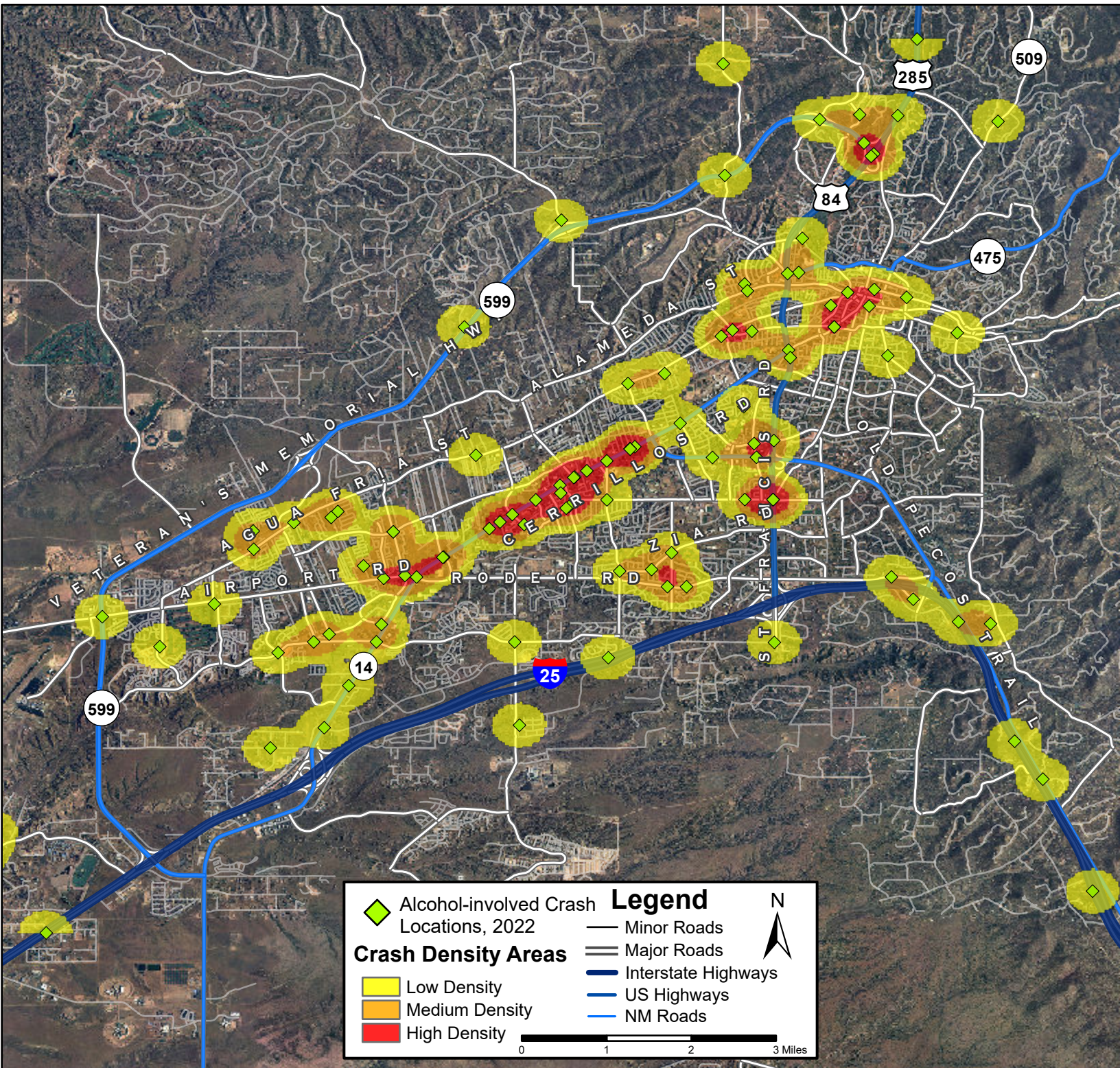


# Density Map of Alcohol-involved Crashes in Santa Fe, 2022



Prepared for the New Mexico Department of Transportation,  
 Traffic Safety Division, Traffic Records Bureau. Under Contract CO6380 by the  
 University of New Mexico, Geospatial and Population Studies, Traffic Research Unit (TRU)

[gps.unm.edu](http://gps.unm.edu) December 2023 [ContactGPS@unm.edu](mailto:ContactGPS@unm.edu)

Distributed in compliance with New Mexico Statute 66-7-214  
 as a reference source regarding New Mexico traffic crashes.

