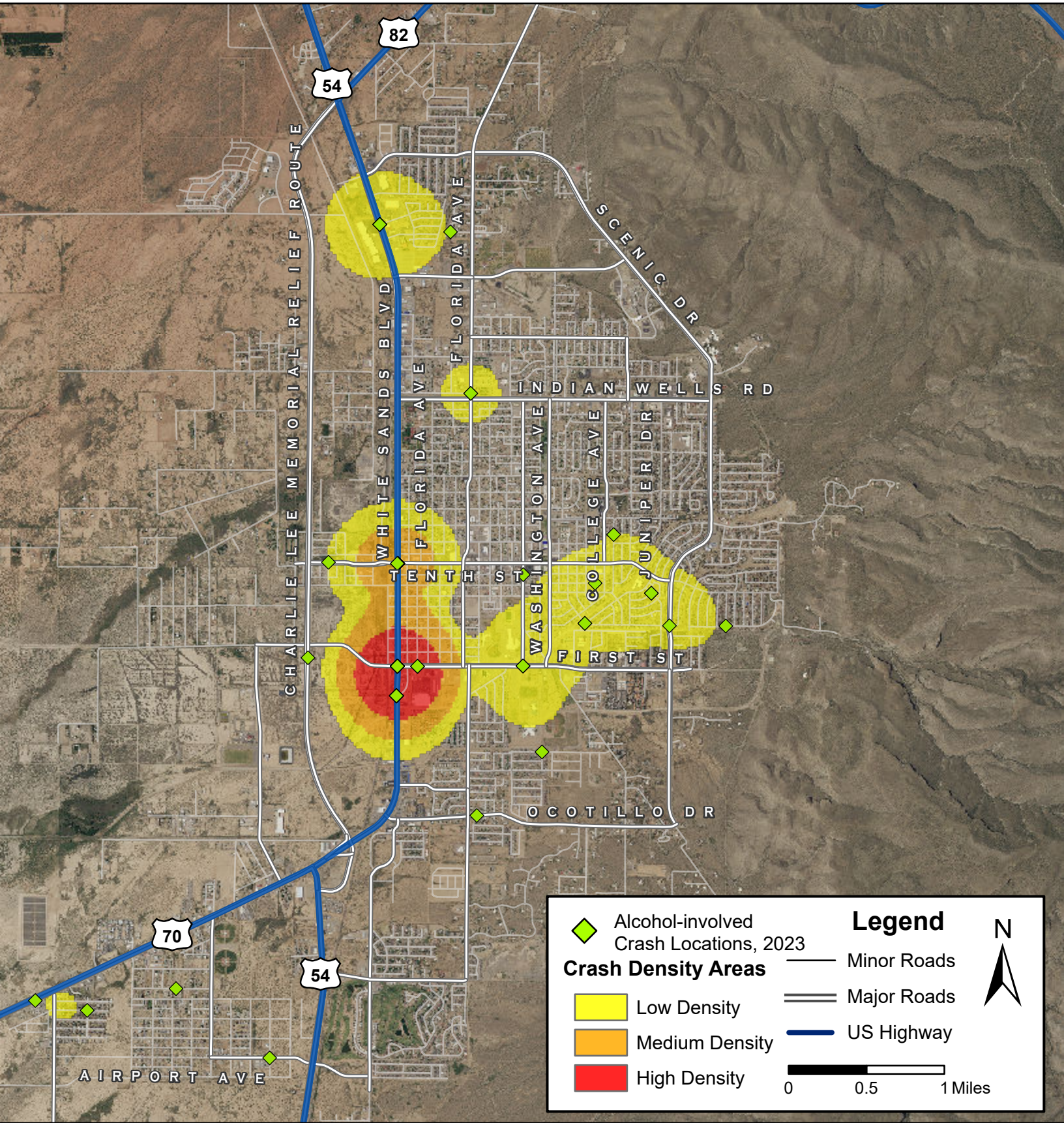


Density Map of Alcohol-involved Crashes in Alamogordo, 2023



Prepared for the New Mexico Department of Transportation,
Traffic Safety Division, Traffic Records Bureau. Under Contract CO6380 by the
University of New Mexico, Geospatial and Population Studies, Traffic Research Unit (TRU)
gps.unm.edu October 2024 ContactGPS@unm.edu

