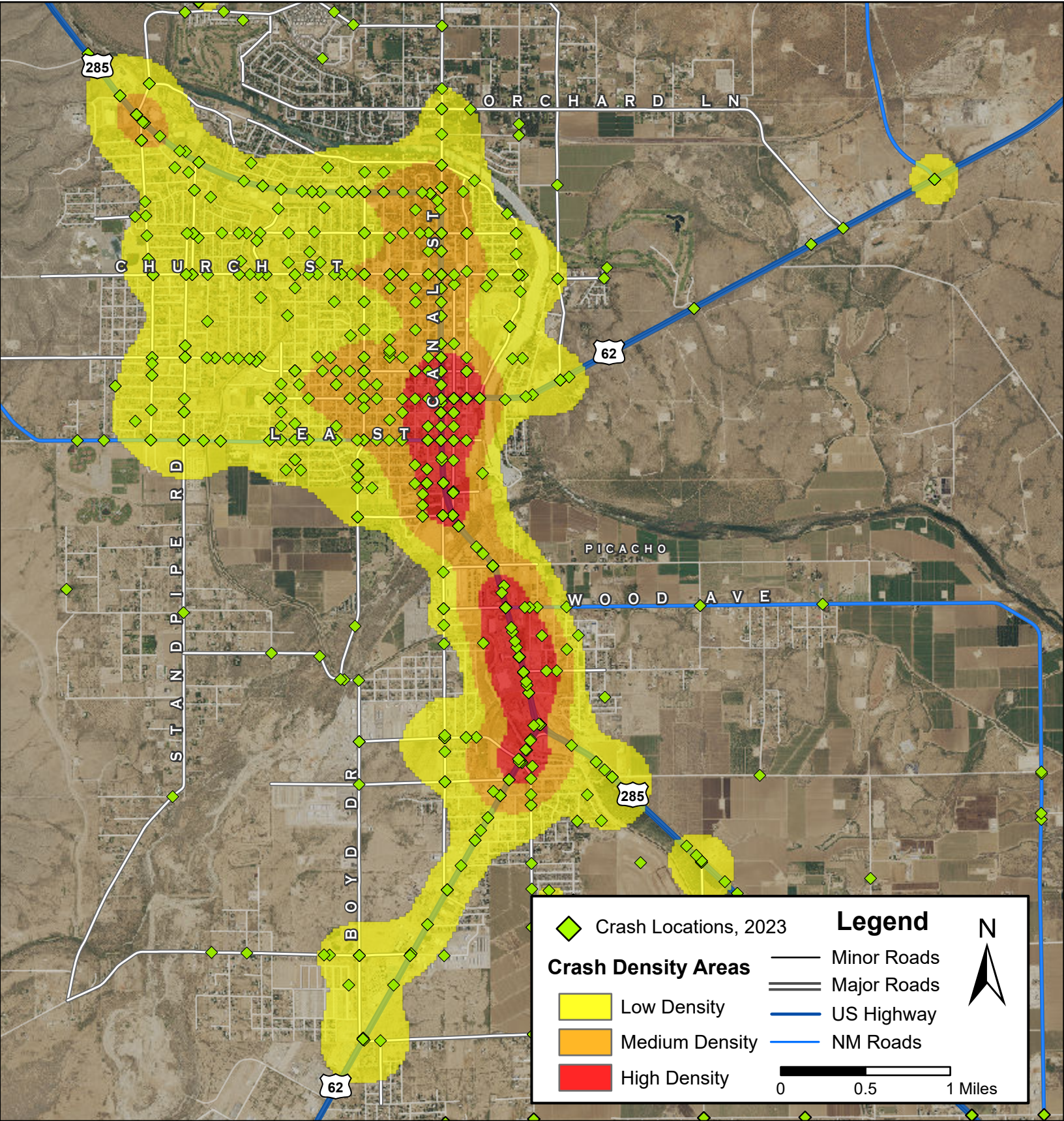


Density Map of Crashes in Carlsbad, 2023



Prepared for the New Mexico Department of Transportation,
Traffic Safety Division, Traffic Records Bureau. Under Contract CO6380 by the
University of New Mexico, Geospatial and Population Studies, Traffic Research Unit (TRU)

gps.unm.edu October 2024 ContactGPS@unm.edu



Distributed in compliance with New Mexico Statute 66-7-214
as a reference source regarding New Mexico traffic crashes.