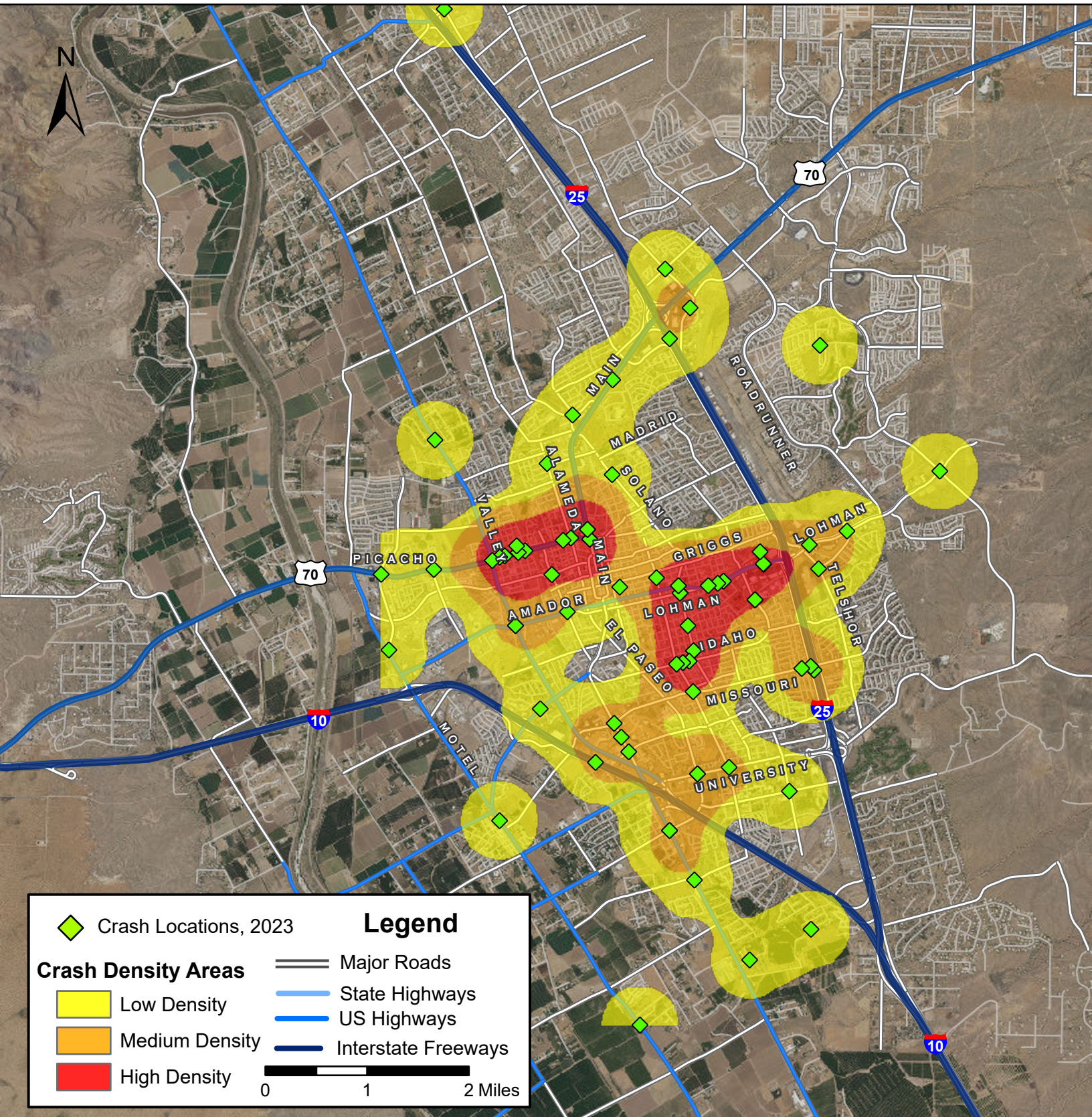


# Density Map of Pedestrian and Pedalcyclist Crashes in Las Cruces, 2023



Prepared for the New Mexico Department of Transportation, Traffic Safety Division, Traffic Records Bureau. Under Contract CO6380 by the University of New Mexico, Geospatial and Population Studies, Traffic Research Unit (TRU) [gps.unm.edu](http://gps.unm.edu) November 2024 ContactGPS@unm.edu

