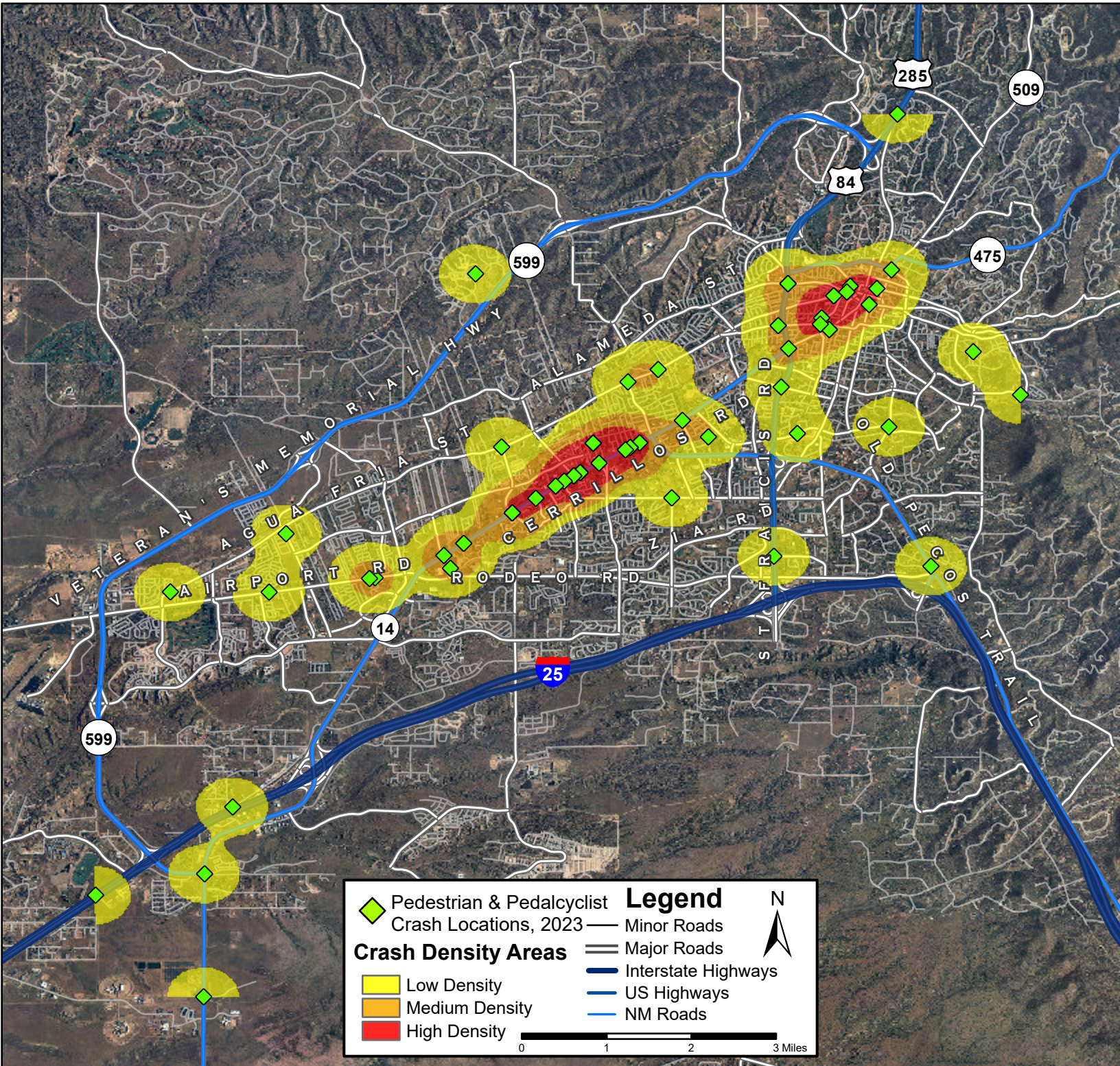


Density Map of Pedestrian and Pedalcyclist Crashes in Santa Fe, 2023



Prepared for the New Mexico Department of Transportation,
 Traffic Safety Division, Traffic Records Bureau. Under Contract CO6380 by the
 University of New Mexico, Geospatial and Population Studies, Traffic Research Unit (TRU)

gps.unm.edu November 2024 Contact GPS@unm.edu



Distributed in compliance with New Mexico Statute 66-7-214
 as a reference source regarding New Mexico traffic crashes.