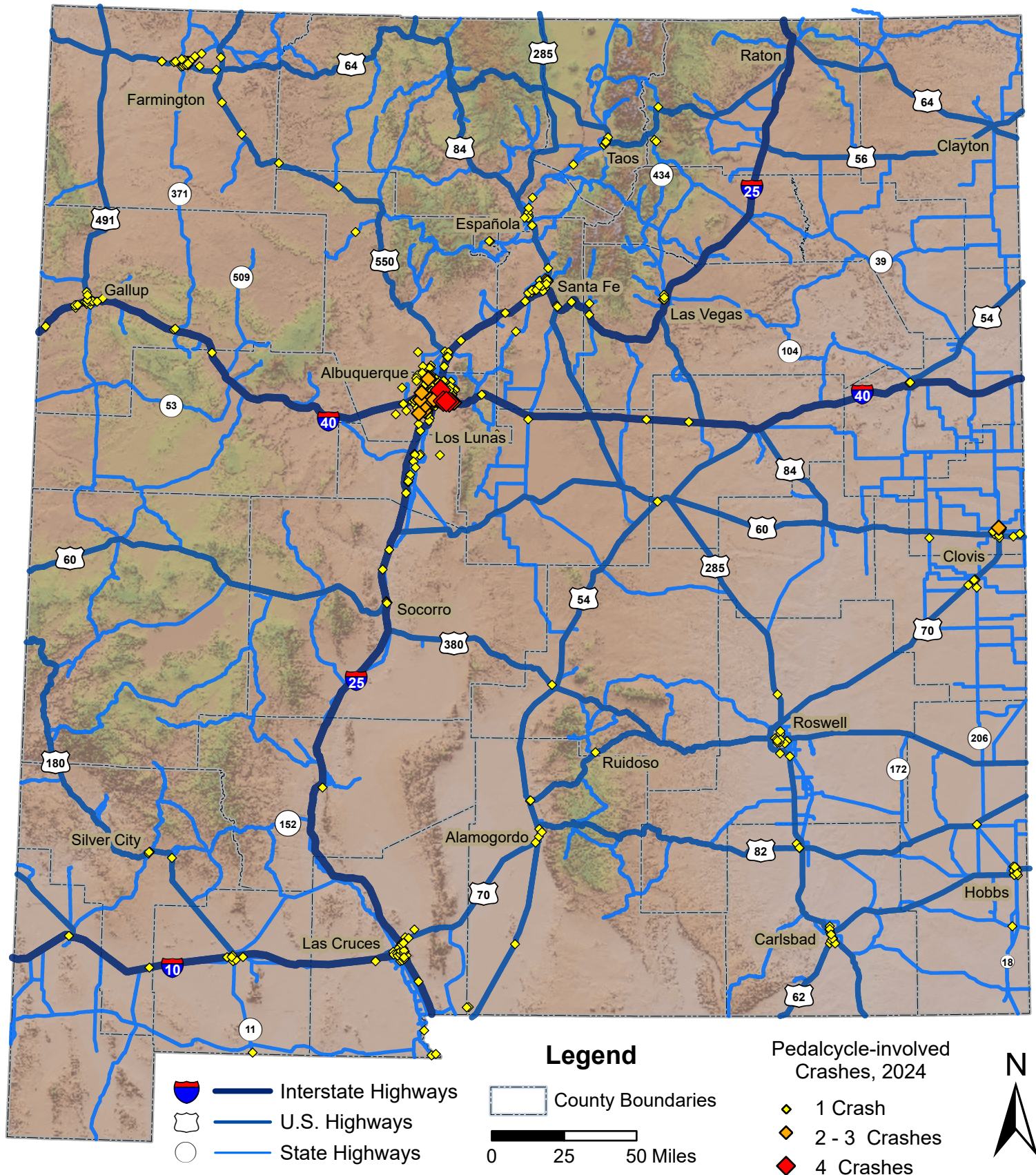


# Pedalcycle-involved Crashes in New Mexico, 2024



Prepared for the New Mexico Department of Transportation,  
Traffic Safety Division, Traffic Records Bureau. Under Contract CO6380 by the  
University of New Mexico, Geospatial and Population Studies, Traffic Research Unit (TRU)  
gps.unm.edu November 2025 Contact GPS@unm.edu

